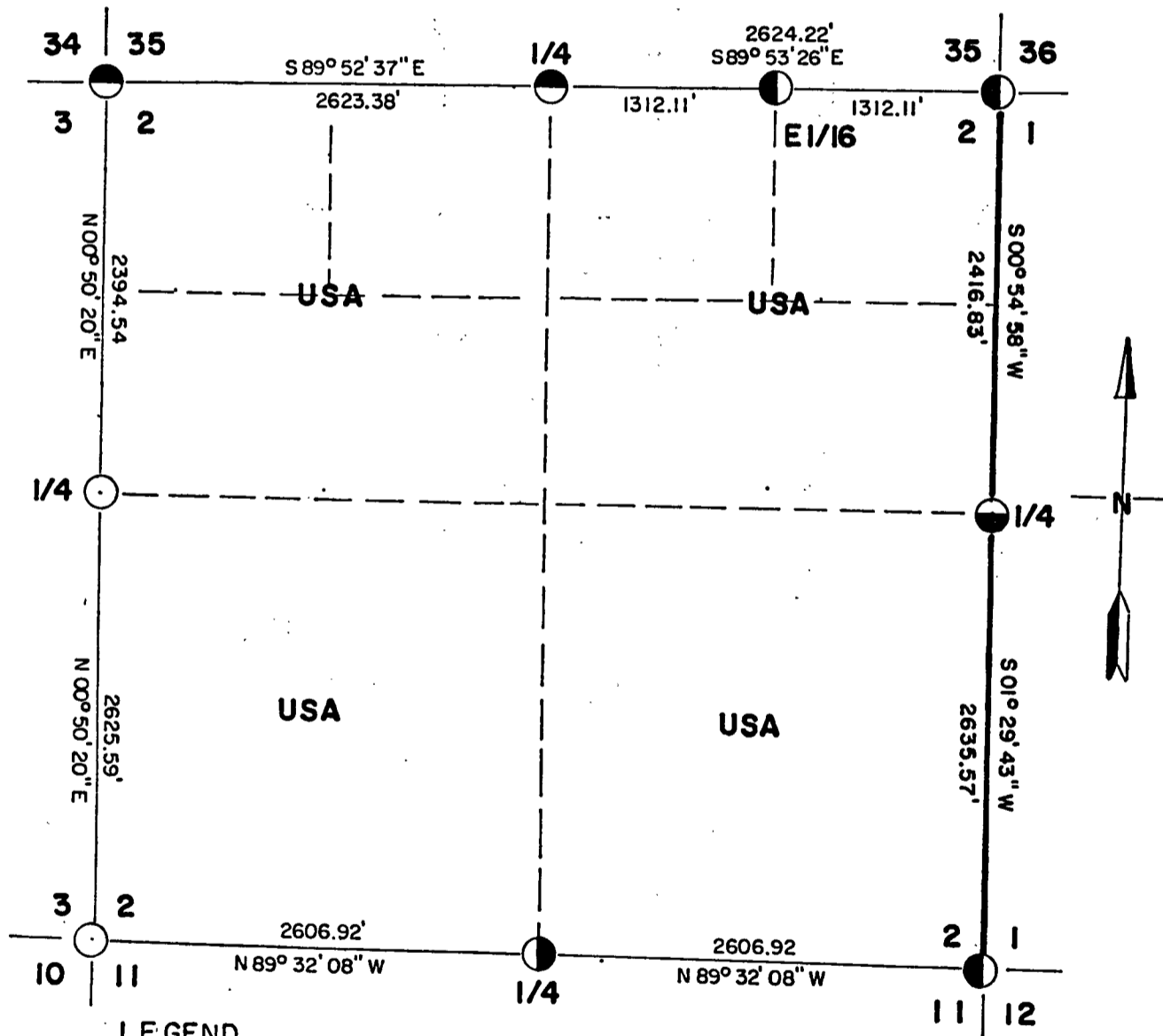


Sheet one of four

PLAT OF SURVEY U.S. GOVERNMENT LAND

All of Section 2
Township 37 North, Range 13 East, Fourth Principal Meridian
FOREST COUNTY, WISCONSIN.



LEGEND

- 6" Diameter concrete post with brass cap
- 2" Diameter Aluminum monument with Forest County cap
- 2" Diameter Aluminum monument, 30" long
- 2" Diameter Aluminum monument, 60" long
- 2" Diameter iron pipe with Brass cap

CONVERSION FACTOR:
Feet to Meters = 0.304801
Meters to Feet = 3.280833

— Marked Boundary lines of US Government Lands

Stock No. 26273

Sheet two of four

SURVEY NOTES

This survey was made by AARON ASSOCIATES of Oconto Falls, Wisconsin under contract with the USDA, Forest Service, for the purpose of restoring and recovering corners on the perimeter of Section 2, for establishing the subdivisional corners within Section 2, and for locating and marking the boundaries of US Government Lands on their perimeter and within Section 2, Township 37 North, Range 13 East, Fourth Principal Meridian, Forest County, Wisconsin.

The US Government Lands were acquired in the mid 1930s.

The original government survey of the township was made in 1865.

The corner positions recovered, restored and established are marked by monuments described in the map legend.

The corner positions established were located to an accuracy of one part in 10,000.

The bearings between corner positions are true bearings as determined by solar observation.

The field notes of this survey and a copy of the Plat map are on file in the Forest Supervisor's Office at Rhinelander, Wisconsin.

CORNERS RECOVERED AND RESTORED1. Section corner to Sections 34-35, T38N, R13E and 2-3, T37N, R13E.

Located a 6" diameter concrete post with Brass cap stamped for corner set by Jean Resvick, RLS, in 1971. Certificate on file.
Corner references:

Cedar (previous)	14"	N 49 W	77.10'
Maple "	12"	N 34 E	59.90'
Hemlock (new)	8"	S 10 W	61.05'
Maple "	6"	S 57 W	30.17'
Steel Sign Post		S 06 E	2.40'

2. Section corner to Sections 35-36, T38N, R13E and 1-2, T37N, R13E.

Located a 2" diameter iron pipe with Brass cap stamped for corner set by Jean Resvick, RLS in 1971. Plat map on file.
Corner references:

Maple (previous)	18"	N 25 E	27.40'
Maple (new)	6"	N 76 W	38.42'
Maple "	20"	S 32 W	38.25'
Hemlock "	20"	S 68 W	93.62'
Iron Post		NW	1.0'

3. Section corner to Sections 1-2-11-12, T37N, R13E.

Located a 2" diameter iron pipe with Brass cap stamped for corner set by Jean Resvick, RLS. Corner certificate on file.

Corner references:

See Forest County records.

Stock No. 26273

Sheet three of four

4. Section corner to Sections 2-3-10-11, T37N, R13E.

Extensive logging has ruined all corner evidence in this area. I therefore set this corner by lost methods of double proportionate measurement between the south quarter corner of Section 3, the southeast corner of Section 2, the northeast corner of Section 3, and the southeast corner of Section 10 all of T37N, R13E.

Corner references:

Hemlock	8"	S 26 E	66.85'
Red Maple	5"	N 86 W	6.05'
Sugar Maple	5"	N 04 E	24.20'
Cedar	10"	N 76 E	53.63'
Steel Sign Post		S 14 W	0.90'

5. Quarter corner to Sections 2-3, T37N, R13E.

Could not find any original evidence of this corner. I therefore set this corner by lost methods of single proportionate measurement.

Corner references:

Cedar	14"	N 03 W	10.70'
Cedar	10"	N 50 E	43.03'
Cedar	16"	S 68 E	46.52'
Steel Sign Post		S 32 W	1.47'

6. Quarter corner to Sections 35, T38N, R13E and 2, T37N, R13E.

Located a 6" diameter concrete post with Brass cap stamped for corner set by Jean Resvick, RLS, in 1971. Plat map on file.

Corner references:

Hemlock	17"	S 25 E	38.2'
White Spruce	19"	S 22 W	41.1'
Sugar Maple	13"	N 14 W	32.0'
Road centerline		South	3'
Set Steel Sign Post North, next to 4"x4" post with metal tag			

7. Quarter corner to Sections 1-2, T37N, R13E.

Located a 2" diameter Aluminum monument with Forest County cap stamped for corner set by Phillip Hansen, RLS, in 1976.

Certificate on file in Forest County records.

Corner references:

Hemlock	30"	S 67 E	6.93'
Hemlock	12"	N 70 W	16.62'
Tamarack	6"	N 08 E	31.67'
Steel Sign Post		West	1.40'

8. Quarter corner to Sections 2-11, T37N, R13E.

Located a Cedar tree with metal tag noting corner position was N 09 W and 10 lks. I found a 3" pickett at this location but no bearing tree evidence. This corner was 109.70' too far west. I did not accept this tree and pickett but set the corner by lost methods of single proportionate measurement.

Corner references:

Cedar	12"	S 28 E	10.90'
Cedar	11"	N 83 E	44.82'
Hemlock	12"	N 42 W	38.00'
Steel Sign Post		North	1.54'

Stock No. 26273

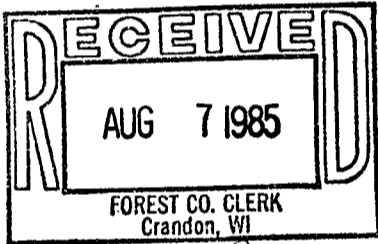
Sheet four of four

SURVEYOR'S AFFIDAVIT

STATE OF WISCONSIN)
OCONTO COUNTY)SS

I, Kim H Pritzlaff, Registered Land Surveyor in the State of Wisconsin, hereby certify: that I have surveyed and subdivided Section 2, Township 37 North, Range 13 East, Fourth Principal Meridian, Forest County, Wisconsin.

The Plat map and notes herewith are a true and correct representation of the lands surveyed and of the corners restored, recovered, and established. I have restored, recovered, and established these corners in accordance with the rules of survey of the public lands and with the Statutes of the State of Wisconsin.



Dora C. James
Forest Co. Clerk

Kim Pritzlaff

Kim H Pritzlaff, RLS No. 1259
AARON ASSOCIATES
Oconto Falls, Wisconsin

Date of survey: 1985



Plat ready for filing: *Dale B. Stoege*
District Ranger