

Document Number
217629

REGISTER'S OFFICE
Forest County, Wis.
Received for record this 24th day
of July A.D. 2015 at
4:15 o'clock P.M. and recorded
in Vol. 3065
Page 1
Erika E. Deaton, Deputy
Register of Deeds

FOREST CO SURVEYOR
FILE # 361307-20150724
DATE BY

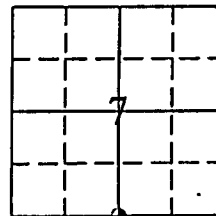
U.S. PUBLIC LAND SURVEY MONUMENTATION RECORD

(AS REQUIRED BY S. A-E 7.08, WI ADM. CODE)

CORNER: SOUTH 1/4 INDEX NUMBER: J-3
SECTION: 7 TOWNSHIP: T36N RANGE: R13E
TOWN/CITY/VILLAGE: TOWN OF LINCOLN
COUNTY: FOREST STATE: WISCONSIN

HISTORY OF ORIGINAL CORNER ESTABLISHMENT AND SUBSEQUENT RESTORATIONS
AND DESCRIPTION OF ANY RECORD, MONUMENT, OCCUPATIONAL, TESTIMONIAL, OR
OTHER EVIDENCE CONSIDERED:

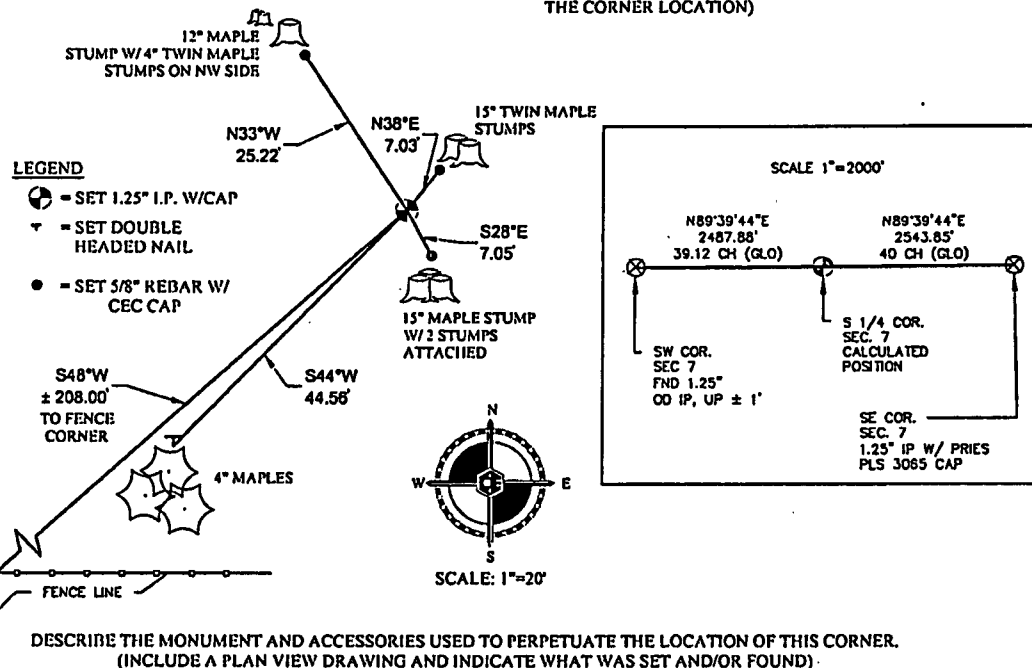
1865: JAMES L. NOWLIN, SET 1/4 CORNER POST
30" HEMLOCK N35°W 10 LINKS
12" CEDAR S25°W 15 LINKS



⊙ = CORNER LOCATION

CORNER WAS: (CHECK ALL THAT APPLY)

- ☐ RESTORED THROUGH ACCEPTANCE OF AN OBLITERATED LOCATION
- ☐ RESTORED OR REESTABLISHED IN A LOCATION THAT DIFFERS FROM A PREVIOUS RESTORATION OR REESTABLISHMENT (INCLUDE A PLAN VIEW DRAWING AND INDICATE WHAT WAS SET AND/OR FOUND)
- ☒ CONSIDERED A LOST CORNER AND REESTABLISHED THROUGH LOST CORNER PROPORTIONATE METHODS (INCLUDE A PLAN VIEW DRAWING SHOWING DISTANCES AND DIRECTIONS TO OTHER PUBLIC LAND SURVEY CORNERS USED FOR PROPORTIONING AND DETERMINING THE CORNER LOCATION)



DESCRIBE THE MONUMENT AND ACCESSORIES USED TO PERPETUATE THE LOCATION OF THIS CORNER.
(INCLUDE A PLAN VIEW DRAWING AND INDICATE WHAT WAS SET AND/OR FOUND).

CASEY J. PRIES PLS# S-3065, SET 1.25" x 24" I.P. WITH PLASTIC PRIES PLS-3065 CAP USING SINGLE PROPORTIONATE METHODS. CORNER IS LOCATED N48°E ±208' FROM FENCE CORNER OF EAST AND SOUTH FENCE LINES.

SET THE FOLLOWING WITNESSES:

5/8" REBAR W/ CEC CAP 0.8' WEST OF TWIN 15" MAPLE STUMPS	N38°E	7.03'
5/8" REBAR W/ CEC CAP 0.7' NORTH OF 15" MAPLE STUMP W/ TWO OTHER STUMPS ATTACHED	S28°E	7.05'
4" MAPLE (GROUP OF 3)	S44°W	44.56'
5/8" REBAR W/ CEC CAP 0.7' SE OF 12" MAPLE STUMP WITH TWIN 4" MAPLE STUMPS ON NW SIDE	N33°W	25.22'

NOTE: ALL WITNESS TREES HAVE CHEST AND STUMP BLAZES WITH DOUBLE
HEADED NAIL AT BASE. DISTANCES ARE MEASURED TO DOUBLE HEADED NAIL
OR TO 5/8" REBAR WITH CEC CONTROL CAP. ALL EXISTING STUMPS HAVE STUMP
BLAZES.

SIGNATURE: *Casey J. Pries* DATE: 7-24-15 Index No. J-3

I, CASEY J. PRIES PLS S-3065
CERTIFY THAT THE CORNER LOCATION SHOWN ON THIS ABOVE RECORD
WAS DETERMINED BY ME OR UNDER MY DIRECTION AND CONTROL AND
THAT THIS U.S. PUBLIC LAND SURVEY MONUMENTATION RECORD IS CORRECT
AND COMPLETE TO THE BEST OF MY KNOWLEDGE AND BELIEF.



COLEMAN ENGINEERING COMPANY
635 CIRCLE DRIVE, IRON MOUNTAIN, MI 49801
PHONE: (906) 774-3440 FAX: (906) 774-7776

DRAWN: MJT	FB 430, PG. 72	DATE: 7/24/15	JOB NO. 15127-B
---------------	----------------	---------------	--------------------

