

FOREST CO SURVEYOR
FILE # 361307-20150724
DATE _____ BY _____

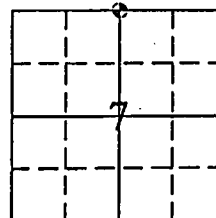
U.S. PUBLIC LAND SURVEY MONUMENTATION RECORD

(AS REQUIRED BY S. A-E 7.08, WI ADM. CODE)

CORNER: NORTH 1/4 INDEX NUMBER: E-3
SECTION: 7 TOWNSHIP: T36N RANGE: R13E
TOWN/CITY/VILLAGE: TOWN OF LINCOLN
COUNTY: FOREST STATE: WISCONSIN

**HISTORY OF ORIGINAL CORNER ESTABLISHMENT AND SUBSEQUENT RESTORATIONS
AND DESCRIPTION OF ANY RECORD, MONUMENT, OCCUPATIONAL, TESTIMONIAL, OR
OTHER EVIDENCE CONSIDERED:**

1865: JAMES L. NOWLIN, SET 1/4 SECTION POST
10" BIRCH N20°W 150 LINKS
13" ELM S45°E 300 LINKS



☉ = CORNER LOCATION

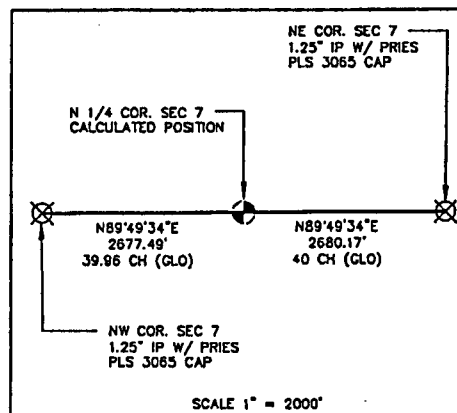
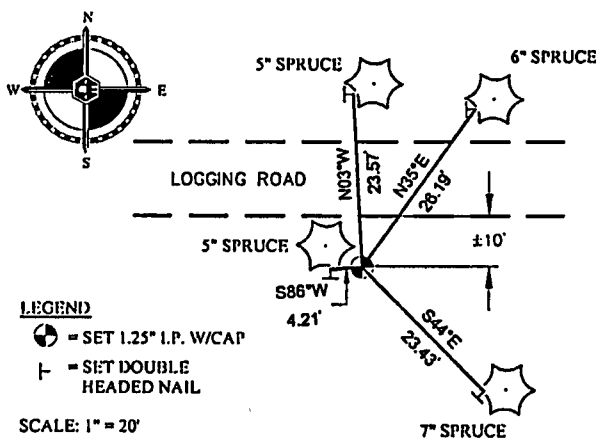
CORNER WAS: (CHECK ALL THAT APPLY)

- ☐ RESTORED THROUGH ACCEPTANCE OF AN OBLITERATED LOCATION

☐ RESTORED OR REESTABLISHED IN A LOCATION THAT DIFFERS FROM A PREVIOUS RESTORATION OR REESTABLISHMENT (INCLUDE A PLAN VIEW DRAWING AND INDICATE WHAT WAS SET AND/OR FOUND)

☐ RESTORED THROUGH ACCEPTANCE OF A FOUND PERPETUATED LOCATION

☒ CONSIDERED A LOST CORNER AND REESTABLISHED THROUGH LOST CORNER PROPORTIONATE METHODS (INCLUDE A PLAN VIEW DRAWING SHOWING DISTANCES AND DIRECTIONS TO OTHER PUBLIC LAND SURVEY CORNERS USED FOR PROPORTIONING AND DETERMINING THE CORNER LOCATION)



DESCRIBE THE MONUMENT AND ACCESSORIES USED TO
PERPETUATE THE LOCATION OF THIS CORNER.
(INCLUDE A PLAN VIEW DRAWING AND INDICATE WHAT WAS SET AND/OR FOUND)

CASEY J. PRIES PLS# S-3065, SET 1.25" x 36" I.P. WITH PLASTIC PRIES PLS-3065 CAP USING SINGLE PROPORTIONATE METHODS. CORNER IS LOCATED ± 10 FEET SOUTH OF EAST-WEST LOGGING ROAD.

SET THE FOLLOWING WITNESSES:

6" SPRUCE	N35°E	26.19'
7" SPRUCE	S44°E	23.43'
5" SPRUCE	S86°W	4.21'
5" SPRUCE	N3°W	23.57'

NOTE: ALL WITNESS TREES HAVE CHEST AND STUMP BLAZES WITH DOUBLE HEADED NAIL AT BASE. DISTANCES ARE MEASURED TO DOUBLE HEADED NAIL.

SIGNATURE: *Carly Rice*

DATE: 7-24-15

Index No. E-3

I, CASEY J. PRIES PLS S-3063
 CERTIFY THAT THE CORNER LOCATION SHOWN ON THIS ABOVE RECORD
 WAS DETERMINED BY ME OR UNDER MY DIRECTION AND CONTROL AND
 THAT THIS U.S. PUBLIC LAND SURVEY MONUMENT RECORD IS CORRECT
 AND COMPLETE TO THE BEST OF MY KNOWLEDGE AND BELIEF.



COLEMAN ENGINEERING COMPANY
635 CIRCLE DRIVE, IRON MOUNTAIN, MI 49801
PHONE: (906) 774-3440 FAX: (906) 774-7776

DRAWN:
MJT

FB 430, PG:71

DATE: 7/24/15

JOB NO.
15127-B

