

Document Number  
217626

REGISTER'S OFFICE  
Forest County, Wis.  
Received for record this 24th day  
of July A.D. 2015 at  
4:15 o'clock P.M. and recorded  
in Vol. Corner Restoration  
page E-5  
Eric L. Dedmon Deputy  
Register of Deeds

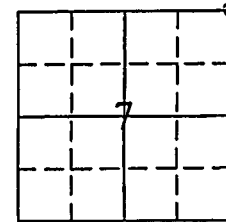
# U.S. PUBLIC LAND SURVEY MONUMENTATION RECORD

(AS REQUIRED BY S. A-E 7.03, WI ADM. CODE)

CORNER: NORTHEAST INDEX NUMBER: E-5  
SECTION: 7 TOWNSHIP: T36N RANGE: R13E  
TOWN/CITY/VILLAGE: TOWN OF LINCOLN  
COUNTY: FOREST STATE: WISCONSIN

HISTORY OF ORIGINAL CORNER ESTABLISHMENT AND SUBSEQUENT RESTORATIONS  
AND DESCRIPTION OF ANY RECORD, MONUMENT, OCCUPATIONAL, TESTIMONIAL, OR  
OTHER EVIDENCE CONSIDERED:

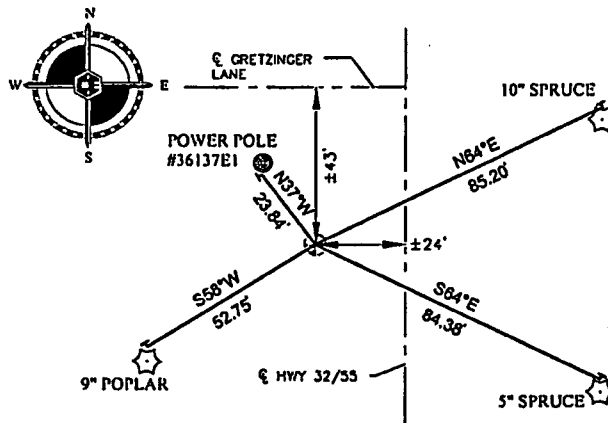
1865: JAMES L. NOWLIN, SET CORNER POST  
8" BIRCH S30°E 100 LINKS  
12" TAMARACK N29°W NO MEAS. LISTED



★ = CORNER LOCATION

## CORNER WAS: (CHECK ALL THAT APPLY)

- ☐ RESTORED THROUGH ACCEPTANCE OF AN OBLITERATED LOCATION
- ☐ RESTORED THROUGH ACCEPTANCE OF A FOUND PERPETUATED LOCATION
- ☐ RESTORED OR REESTABLISHED IN A LOCATION THAT DIFFERS FROM A PREVIOUS RESTORATION OR REESTABLISHMENT (INCLUDE A PLAN VIEW DRAWING AND INDICATE WHAT WAS SET AND/OR FOUND)
- ☒ CONSIDERED A LOST CORNER AND REESTABLISHED THROUGH LOST CORNER PROPORTIONATE METHODS (INCLUDE A PLAN VIEW DRAWING SHOWING DISTANCES AND DIRECTIONS TO OTHER PUBLIC LAND SURVEY CORNERS USED FOR PROPORTIONING AND DETERMINING THE CORNER LOCATION)



## LEGEND

- ★ = SET 1.25" I.P. W/CAP  
▼ = SET DOUBLE HEADED NAIL

SCALE: 1" = 40'

NOTE: SEE DETAIL ON PAGE 2  
FOR PROPORTIONING AND  
METHODS USED TO DETERMINE  
CORNER LOCATION.

DESCRIBE THE MONUMENT AND ACCESSORIES USED TO  
PERPETUATE THE LOCATION OF THIS CORNER.  
(INCLUDE A PLAN VIEW DRAWING AND INDICATE WHAT WAS SET AND/OR FOUND)

CASEY J. PRIES PLS# S-3065, SET 1.25" x 24" I.P. WITH PLASTIC PRIES PLS-3065 CAP USING  
DOUBLE PROPORTIONATE METHODS. CORNER IS LOCATED ± 43 FEET SOUTH OF CENTERLINE  
OF GRETZINGER LANE, AND ALSO ± 24 FEET WEST OF CENTERLINE OF HWY 32/55.

## SET THE FOLLOWING WITNESSES:

10" SPRUCE	N64°E	85.20'
5" SPRUCE	S64°E	84.38'
9" POPLAR	S58°W	52.75'
POWER POLE #36137E1	N37°W	23.84'

NOTE: ALL WITNESS TREES HAVE CHEST AND STUMP BLAZES WITH DOUBLE  
HEADED NAIL AT BASE. DISTANCES ARE MEASURED TO DOUBLE HEADED NAIL.

SIGNATURE: Casey J. Pries

DATE: 7-24-15

Index No. E-5

I, CASEY J. PRIES PLS S-3065  
CERTIFY THAT THE CORNER LOCATION SHOWN ON THIS ABOVE RECORD  
WAS DETERMINED BY ME OR UNDER MY DIRECTION AND CONTROL AND  
THAT THIS U.S. PUBLIC LAND SURVEY MONUMENT RECORD IS CORRECT  
AND COMPLETE TO THE BEST OF MY KNOWLEDGE AND BELIEF.



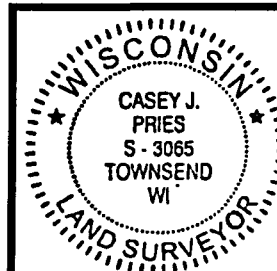
COLEMAN ENGINEERING COMPANY  
435 CIRCLE DRIVE, IRON MOUNTAIN, MI 49801  
PHONE: (906) 774-3440 FAX: (906) 774-7776

DRAWN:  
MJT

FB 430, PG:72

DATE: 7/24/15

JOB NO.  
15127-B



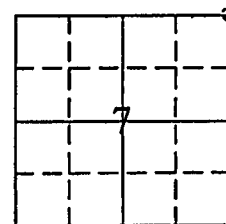
Page 1 of 2

FOREST CO SURVEYOR  
FILE # 361307-20150724  
DATE \_\_\_\_\_ BY \_\_\_\_\_

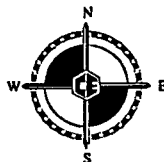
# U.S. PUBLIC LAND SURVEY MONUMENTATION RECORD

(AS REQUIRED BY S. A-E 7.08, WI ADM. CODE)

CORNER: NORTHEAST INDEX NUMBER: E-5  
 SECTION: 7 TOWNSHIP: T36N RANGE: R13E  
 TOWN/CITY/VILLAGE: TOWN OF LINCOLN  
 COUNTY: FOREST STATE: WISCONSIN

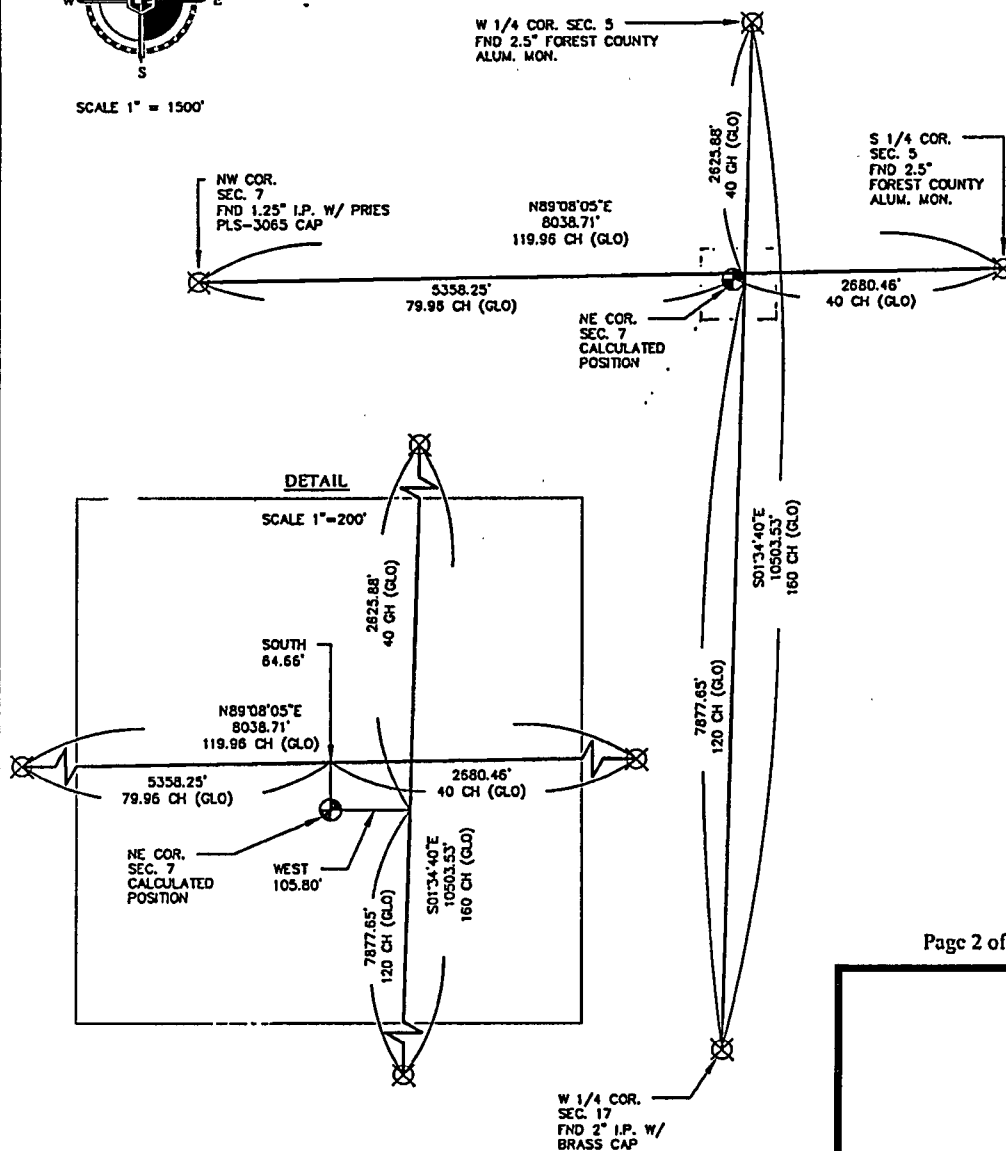


⊗ = CORNER LOCATION



SCALE 1" = 1500'

## PROPORTIONING: PLAN VIEW



Page 2 of 2

SIGNATURE:

DATE:

Index No. E-5

I, CASEY J. PRIES PLS S-3065  
 CERTIFY THAT THE CORNER LOCATION SHOWN ON THIS ABOVE RECORD  
 WAS DETERMINED BY ME OR UNDER MY DIRECTION AND CONTROL AND  
 THAT THIS U.S. PUBLIC LAND SURVEY MONUMENT RECORD IS CORRECT  
 AND COMPLETE TO THE BEST OF MY KNOWLEDGE AND BELIEF.



COLEMAN ENGINEERING COMPANY  
 633 CIRCLE DRIVE, IRON MOUNTAIN, MI 49801  
 PHONE: (906) 774-3440 FAX: (906) 774-7776

DRAWN:  
MJT

FB 430, PG:72

DATE: 7/24/15

JOB NO.  
15127-B