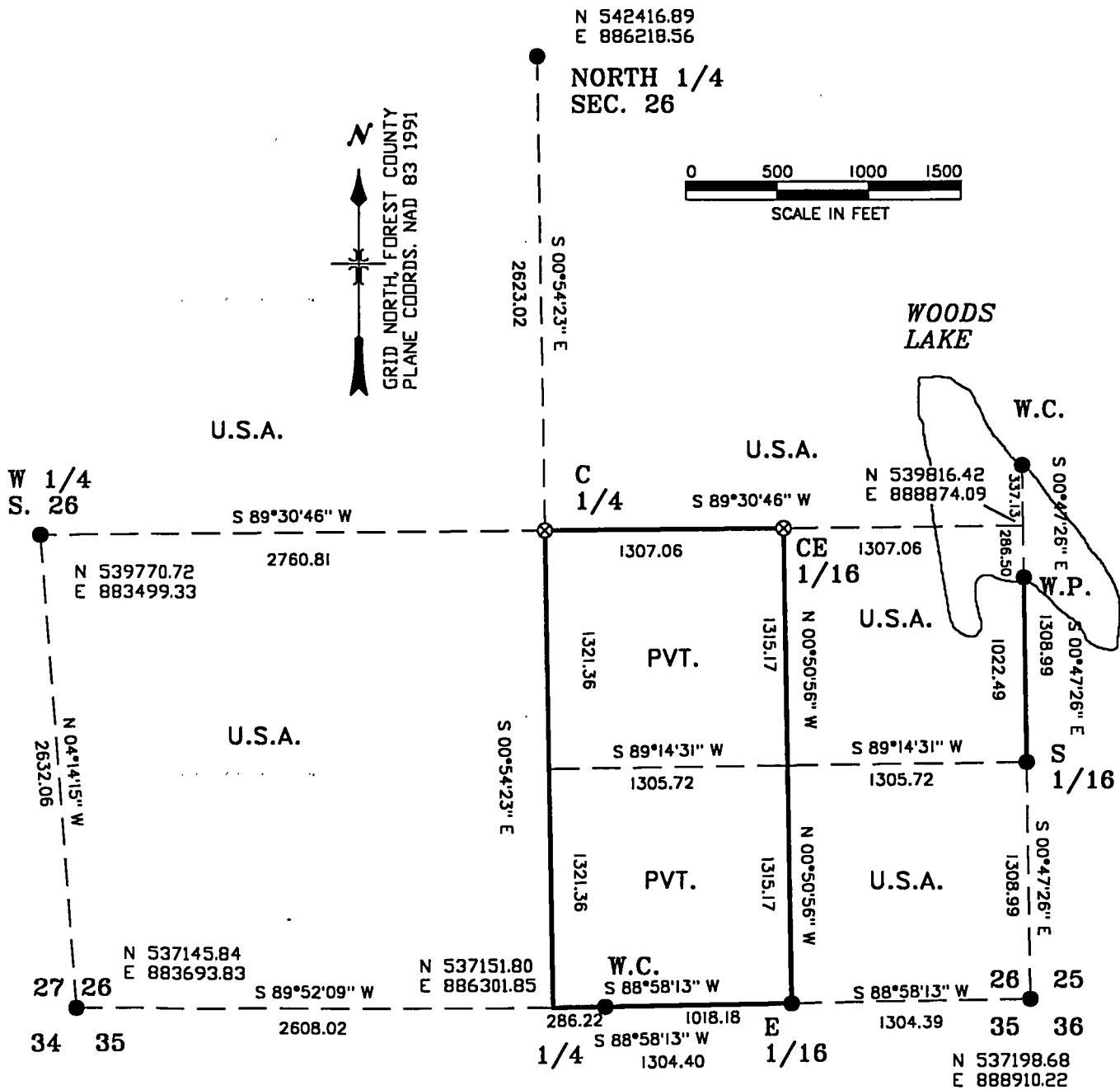


MAP OF SURVEY

U.S. GOVERNMENT LANDS BEING THE WEST 1/2, THE
NORTHEAST 1/4, AND THE SOUTHEAST 1/4,
OF SECTION 26, TOWNSHIP 35 NORTH, RANGE 14 EAST,
FOREST COUNTY, WISCONSIN.



LEGEND

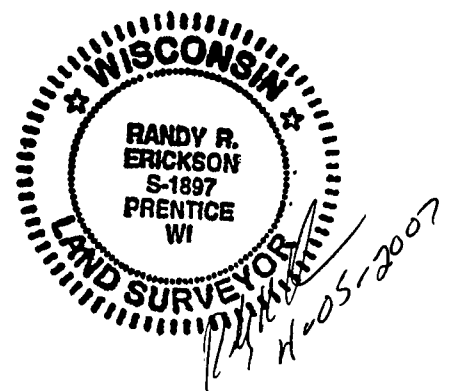
- RECOVERED MONUMENT PREVIOUSLY PERPETUATED TO F.S. STANDARD.
- ⊗ SET A 1" X 60" ALUMINUM DRIVE MONUMENT WITH A 2" ALUM. CAP.
- LINE MARKED TO FOREST SERVICE STANDARD.
- (N 263054) FOREST COUNTY COORDINATES.

PAGE 1 OF 3

FOREST CO SURVEYOR

FILE # 35/426-20070405

DATE _____ BY _____





Stock No. 26273

SURVEY NOTES SECTION 26
TOWNSHIP 35 NORTH, RANGE 14 EAST
FOREST COUNTY, WISCONSIN

THIS SURVEY WAS MADE BY THE U.S.D.A. FOREST SERVICE AT THE REQUEST OF THE LAONA-LAKESWOOD DISTRICT RANGER OF THE CHEQUAMEGON NICOLET NATIONAL FOREST. THE PURPOSE OF THIS SURVEY WAS TO RECOVER, RESTORE, ESTABLISH, MARK AND PERPETUATE, THE CORNERS AND BOUNDARIES OF U.S. GOVERNMENT LANDS ON THE PERIMETER AND WITHIN SECTION 26, T 35 N, R 14 E, FOREST COUNTY, WISCONSIN.

ORIGINAL GOVERNMENT SURVEY WAS MADE IN 1859 BY JAMES McBRIDE. THE SOUTH LINE OF SECTION 26 WAS RETRACED IN 1973 BY JEAN RESVICK, RLS #802. EAST LINE OF SECTION 26 WAS RETRACED IN 1985 BY MILO STEFEN, RLS #1558. THE NORTH LINE OF SECTION 26 WAS RETRACED IN 1992 BY ALAN HARRISON, RLS #1651.

SURVEY WAS MADE USING STATIC GPS. BEARINGS AND DISTANCES ARE GRID, BASED ON FOREST COUNTY COORDINATE SYSTEM. TRUE LINE TRAVERSES WERE MADE USING AN ELECTRONIC TOTAL STATION INSTRUMENT. ERROR OF CLOSURE BETWEEN GPS CONTROLLED POINTS WAS BETTER THAN 1:5000.

BEARING TREES ARE BLAZED SCRIBED AND PAINTED WITH RED PAINT. MEASUREMENTS TO BEARING TREES ARE TO ALUMINUM NAILS IN THE SIDE OF TREES ABOVE THE CENTER OF THE ROOT CROWN.

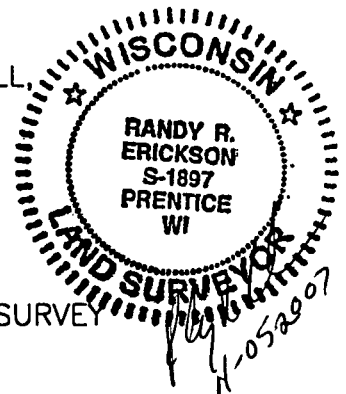
NO VISIBLE ENCROACHMENTS WERE FOUND ON NATIONAL FOREST LANDS.

SURVEY WAS MADE IN MARCH OF 2007.

SURVEY CREW: RANDY ERICKSON, LAND SURVEYOR; DAVE BROWNELL, SURVEYING TECHNICIAN.

CORNERS RECOVERED

1. NORTH QUARTER CORNER, SECTION 26, T 35 N, R 14 E.
RECOVERED MONUMENT AS DESCRIBED ON U.S. PUBLIC LAND SURVEY MONUMENT RECORD, BY RLS #1651, DATED 1-03-1986.
2. WEST QUARTER CORNER, SECTION 26, T 35 N, R 14 E.
RECOVERED MONUMENT AS DESCRIBED ON U.S. PUBLIC LAND SURVEY MONUMENT RECORD, BY RLS #1651, DATED 1-03-1986.
3. WITNESS CORNER TO E 1/4 CORNER OF SECTION 26, T 35 N, R 14 E.
RECOVERED MONUMENT AS DESCRIBED ON U.S. PUBLIC LAND SURVEY MONUMENT RECORD BY RLS #1651, FILED WITH FOREST COUNTY; VOL; "CORNER RESTORATIONS", PAGE; T-21, FILED IN MARCH OF 1986.
4. SOUTH 1/16 CORNER SECTIONS 25 AND 26, T 35 N, R 14 E.
RECOVERED MONUMENT AS DESCRIBED ON MAP OF SURVEY, DATED 1985 BY RLS #1558, PAGE 2 OF 3.
5. SOUTHWEST CORNER OF SECTION 26, T 35 N, R 14 E.
RECOVERED MONUMENT AS DESCRIBED ON MAP OF SURVEY, FOREST COUNTY DOCUMENT #110931, DATED JANUARY 31, 1977, PAGE 2 OF 3 BY RLS #802.
6. WITNESS CORNER TO SOUTH 1/4 CORNER, SEC. 26, T 35 N, R 14 E.
RECOVERED MONUMENT AS DESCRIBED ON MAP OF SURVEY, FOREST COUNTY DOCUMENT #110931, DATED JANUARY 31, 1977, PAGE 2 OF 3 BY RLS #802.
7. EAST 1/16 CORNER SECTIONS 26 AND 35, T 35 N, R 14 E.
RECOVERED MONUMENT AS DESCRIBED ON MAP OF SURVEY, FOREST COUNTY DOCUMENT #110931, DATED JANUARY 31, 1977, PAGE 2 OF 3 BY RLS #802.





Stock No. 26273

8. SOUTHEAST CORNER SECTION 26, T 35 N, R 14 E.
RECOVERED MONUMENT AS DESCRIBED ON MAP OF SURVEY, FOREST COUNTY DOCUMENT #110931, DATED JANUARY 31, 1977, PAGE 2 OF 3 BY RLS #802.
9. WITNESS POINT (LABELED M.C. BY R.L.S. #1558) ON LINE BETWEEN SECTIONS 25 AND 26 ON SOUTH SIDE OF WOODS LAKE T 35 N, R 14 E
RECOVERED MONUMENT AS DESCRIBED ON MAP OF SURVEY, DATED 1985 BY RLS #1558, PAGE 2 OF 3.

CORNERS ESTABLISHED

1. CENTER QUARTER CORNER SECTION 26, T 35 N, R 14 E.
ESTABLISHED CORNER AT THE INTERSECTION OF STRAIGHT LINES BETWEEN OPPOSING QUARTER CORNERS ON THE PERIMETER OF THE SECTION. SET A 1" X 60" ALUMINUM DRIVE MONUMENT WITH A 2" ALUMINUM CAP STAMPED TO IDENTIFY THE CORNER. MONUMENT EXTENDS 12" ABOVE GROUND. MARKED BEARING TREES:

BLACK SPRUCE	6"	N 30° E	20.00 FEET
BLACK SPRUCE	6"	N 70° W	20.24 FEET
BLACK SPRUCE	4"	N 12° W	14.03 FEET
STEEL SIGN POST		NORTH	0.55 FEET
2. CENTER-EAST 1/16 CORNER, SECTION 26, T 35 N, R 14 E.
ESTABLISHED CORNER MID POINT ON LINE BETWEEN THE CENTER 1/4 AND EAST 1/4 CORNERS OF SECTION 26. SET A 1" X 60" ALUMINUM DRIVE IN MONUMENT WITH A 2" ALUMINUM CAP STAMPED TO IDENTIFY THE CORNER. MONUMENT EXTENDS 12" ABOVE GROUND. MARKED BTS:

WHITE BIRCH	8"	WEST	116.60 FEET
ASPEN	10"	N 76° W	91.85 FEET
STEEL SIGN POST		NORTHEAST	0.80 FEET

SURVEYORS AFFIDAVIT

STATE OF WISCONSIN)
COUNTY OF OCONTO) SS

I RANDY R. ERICKSON, LAND SURVEYOR FOR THE U.S.D.A. FOREST SERVICE AND A REGISTERED LAND SURVEYOR IN THE STATE OF WISCONSIN, DO HEREBY CERTIFY THAT I HAVE SURVEYED AND SUBDIVIDED SECTION 26, TOWNSHIP 35 NORTH, RANGE 14 EAST, 4TH P.M., FOREST COUNTY WISCONSIN. DURING THIS SURVEY, I HAVE COMPLIED WITH THE RULES FOR THE DIVISION OF THE PUBLIC LANDS. THE MAP AND ACCOMPANYING NOTES ARE CORRECT AND ACCURATE TO THE BEST OF MY KNOWLEDGE AND BELIEF.

RANDY R. ERICKSON
WIS. REGISTERED LAND SURVEYOR #1897

DATE: 04-05-2007

