

Stock No. 26273

FOREST CO SURVEYOR

FILE # 351423-14930602

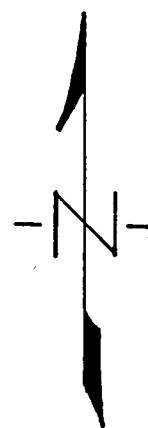
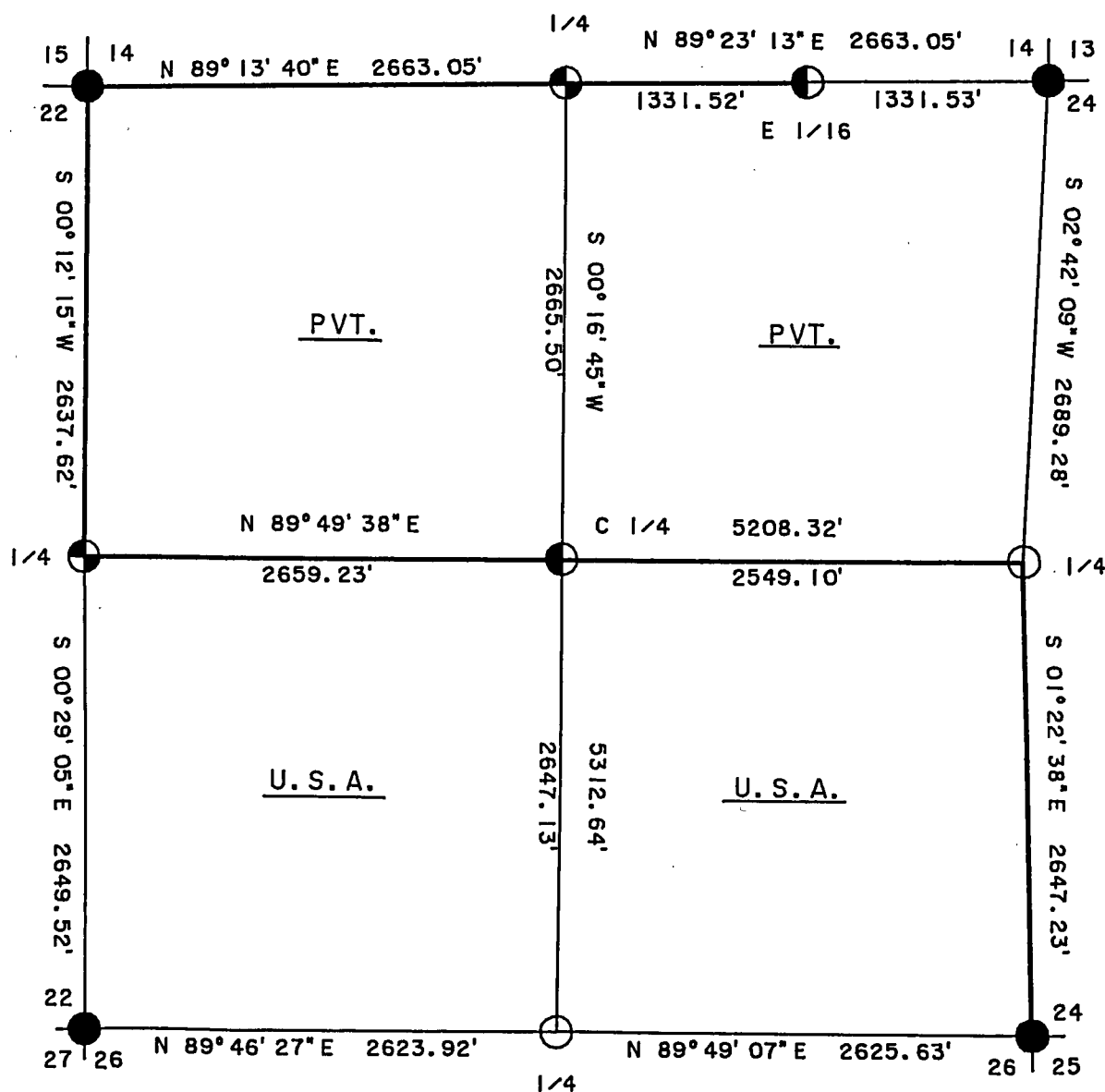
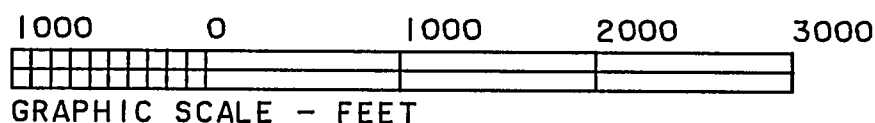
DATE \_\_\_\_\_ BY \_\_\_\_\_

SHEET 1 OF 3

# PLAT OF SURVEY

## U. S. GOVERNMENT LANDS

BEING THE SOUTH 1/2, SECTION 23; TOWNSHIP 35 NORTH;  
RANGE 14 EAST; FOURTH PRINCIPAL MERIDIAN;  
FOREST COUNTY; WISCONSIN.



### LEGEND

- 2" BRASS CAPPED MONUMENT, FOUND IN PLACE.
- 2 1/2" ALUMINUM MONUMENT, FOUND IN PLACE
- ⊕ 2 1/2" X 36" ALUMINUM MONUMENT, SET THIS SURVEY.
- ◐ 1" X 36" ALUMINUM MONUMENT, SET THIS SURVEY.
- MARKED BOUNDARY LINE OF U. S. GOVERNMENT LANDS.



Stock No. 26273

Sheet 2 of 3

SURVEY NOTES

This survey was made by the U.S. Department of Agriculture, Forest Service, for the purpose of restoring and establishing corners on the perimeter of Section 23, for establishing subdivisional corners within Section 23, and for locating and marking the boundaries of U.S. Government land on their perimeter and within Section 23, Township 35 North, Range 14 East, Fourth Principal Meridian, Forest County, Wisconsin.

The U.S. Government lands in this section were acquired in 1934, 1935, and 1982.

The original government subdivision survey of this township was made in 1859.

The corner positions recovered, restored and established by this survey are marked by the monument described in the map legend.

The corner positions established were located to an accuracy of one part in 5000.

The bearings between corner positions are true bearings as determined by solar observations.

The field notes of this survey and a copy of this plat are on file in the Forest Supervisor's Office at Rhinelander, Wisconsin.

CORNERS RECOVERED OR RESTORED

1. Corner Common to Sections 14, 15, 22, and 23.  
Corner recovered as set by Milo Stefan, R.L.S. Certificate on file in Forest County.
2. Corner Common to Sections 13, 14, 23, and 24.  
Corner recovered as set by Jean Resvick R.L.S. Certificate on file in Forest County.
3. Corner Common to Sections 23, 24, 25, and 26.  
Corner recovered as set by Robert Kolby and accessories added to corner by Jean Resvick R.L.S. Certificate on file in Forest County.
4. Quarter Corner Common to Sections 23 and 24.  
Corner recovered as set by Alan Harrison R.L.S. Certificate on file in Forest County.
5. Quarter Corner Common to Sections 23 and 26.  
Corner recovered as set by Alan Harrison R.L.S. Certificate on file in Forest County.
6. Corner Common to Sections 22, 23, 26, and 27.  
Corner recovered as set by Alan Harrison R.L.S. Certificate on file in Forest County.
7. Quarter Corner Common to Sections 14 and 23.  
Corner established on fence line and midway between the Northeast and Northwest corners Section 23.  
Corner References:

Cherry	10"	N.63°E.	18.37 feet
Sugar	10"	S.47°W.	47.23 feet
Sugar	9"	N.18°W.	31.99 feet
Steel Sign Post		East	0.95 feet

Stock No. 26273

Sheet 3 of 3

8. Quarter Corner Common to Sections 22 and 23.

Corner established at the intersection of the blazed lines East and South.

Corner References:

Red Maple	9"	N.71°E.	38.22 feet
Red Maple	7"	S.09°W.	55.58 feet
Red Maple	11"	N.15°W.	22.47 feet
Steel Sign Post		Southwest	0.79 feet

CORNERS ESTABLISHED1. East One-Sixteenth Common to Sections 14 and 23.

Corner established midpoint and on line between the North quarter and Northeast corner of Section 23.

Corner References:

Cherry	8"	N.55°E.	20.24 feet
Cherry	7"	N.51°W.	14.34 feet
Steel Sign Post		Northwest	0.67 feet

2. Center Quarter to Section 23.

Corner established at the intersection of the North-South and East-West quarter lines of Section 23.

Corner References:

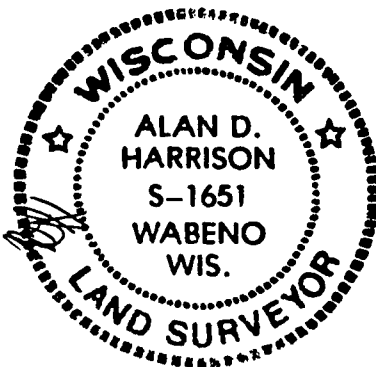
Sugar	6"	S.73°E.	25.54 feet
Sugar	6"	S.19°E.	10.24 feet
Steel Sign Post		West	1.00 feet

SURVEYOR'S AFFIDAVIT

State of Wisconsin]  
County of Forest ]

I, Alan D. Harrison, Land Surveyor, U.S.D.A. Forest Service and a Registered Land Surveyor in the State of Wisconsin, do hereby certify that I have surveyed and subdivided Section 23, Township 35 North, Range 14 East, Fourth Principal Meridian, State of Wisconsin.

The plat map and the notes herewith are a correct representation of the land surveyed and divided. I have surveyed and subdivided said section in accordance with the rules for survey of the public lands and with the statutes of the State of Wisconsin.



*Alan D. Harrison*  
LAND SURVEYOR, U.S.D.A. Forest Service  
R.L.S. Number S-1651  
State of Wisconsin

Date of Survey: 1992

Plat Ready for Filing: *Sue Vap*  
District Ranger

