

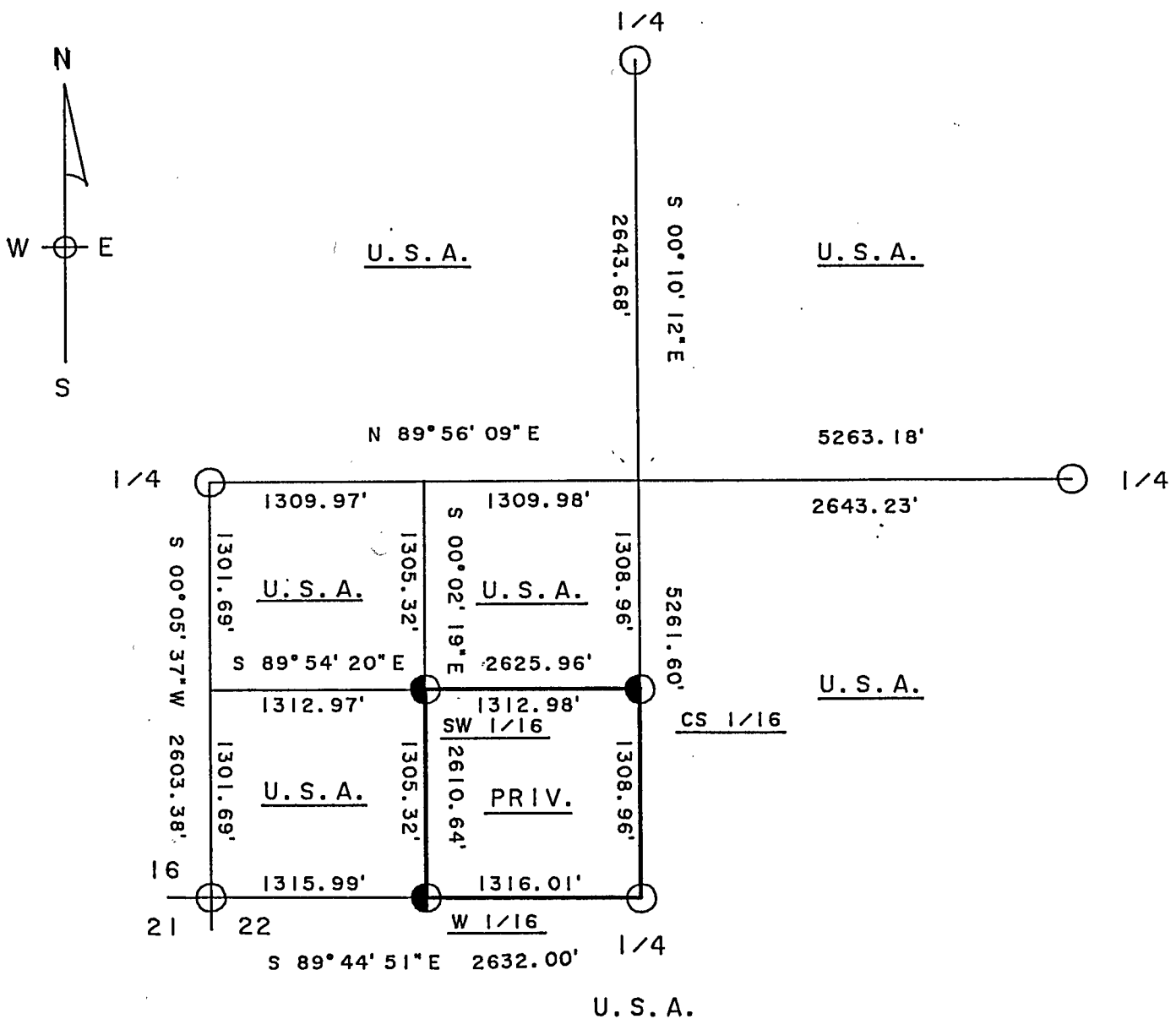
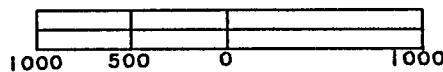
Stock No. 26273

SHEET 1 OF 3

PLAT OF SURVEY U. S. GOVERNMENT LANDS

BEING THE N. 1/2 AND SW 1/4, SW 1/4; N.W. 1/4; N.E. 1/4; AND
S.E. 1/4; SECTION 15; TOWNSHIP 35 NORTH; RANGE 14 EAST;
FOURTH PRINCIPAL MERIDIAN;
FOREST COUNTY; WISCONSIN.

SCALE IN FEET



LEGEND

○ 2 1/2" ALUMINUM MONUMENT, FOUND IN PLACE.

● 1" X 36" ALUMINUM MONUMENT, SET THIS SURVEY.

— MARKED BOUNDARY LINES OF U.S. GOVERNMENT LANDS.

FOREST CO SURVEYOR

FILE # 3514/5-19920513

DATE _____ BY _____

Stock No. 26273

Sheet 2 of 3

SURVEY NOTES

This survey was made by the U.S. Department of Agriculture, Forest Service, for the purpose of establishing subdivisional corners within Section 15 and for locating and marking the boundaries of U.S. Government land on their perimeter and within Section 15 Township 35 North, Range 14 East, 4th Principal Meridian, Forest County, Wisconsin.

The U.S. Government lands in this section were acquired in 1935, 1936, 1964, and 1986.

The original government subdivision survey of this township was made in 1859 by J. McBride.

The corner positions recovered, restored and established by this survey are marked by the monument described in the map legend.

The corner positions established were located to an accuracy of one part in 5000.

The bearings between corner positions are true bearings as determined by solar observations.

The field notes of this survey and a copy of this plat are on file in the Forest Supervisor's Office at Rhinelander, Wisconsin. The perimeter of this section was surveyed under Forest Service contract by Aaron Associates in 1985.

CORNERS RECOVERED OR RESTORED

1. Corner Common to Sections 15, 16, 21 and 22.
Corner monumented by Milo E. Stefan, R.L.S. Certificate on file in Forest County.
2. Quarter Corner Common to Sections 10 and 15.
Corner monumented by Kim H. Pritzlaff, R.L.S. Certificate on file in Forest County.
3. Quarter Corner Common to Sections 14 and 15.
Corner monumented by Milo E. Stefan, R.L.S. Certificate on file in Forest County.
4. Quarter Corner Common to Sections 15 and 22.
Corner monumented by Milo E. Stefan, R.L.S. Certificate on file in Forest County.
5. Quarter Corner Common to Sections 15 and 16.
Corner monumented by Kim H. Pritzlaff, R.L.S. Certificate on file in Forest County.

CORNERS ESTABLISHED

1. West One-Sixteenth Corner to Sections 15 and 22.
Corner established midpoint and on line between the South quarter corner and Southwest corner of Section 15.
Corner References:

Sugar	8"	N.54°E.	26.69 feet
Sugar	10"	N.59°W.	7.00 feet
Iron Pipe	1½"	S.67°E.	1.88 feet
Steel Sign Post		Southwest	1.01 feet

Stock No. 26273

Sheet 3 of 3

2. Center South One-Sixteenth Corner of Section 15.

Corner established midpoint and on line between the South Quarter corner and center quarter corner position.

Corner References:

Black Cherry	12"	N.69°E.	17.71 feet
Black Cherry	7"	N.38°W.	55.78 feet
Iron Pipe	1½"	Northeast	6.57 feet
Steel Sign Post		Northeast	0.76 feet

3. Southwest One-Sixteenth Corner of Section 15.

Corner established at the intersection of the South and West one-sixteenth lines of Section 15.

Corner References:

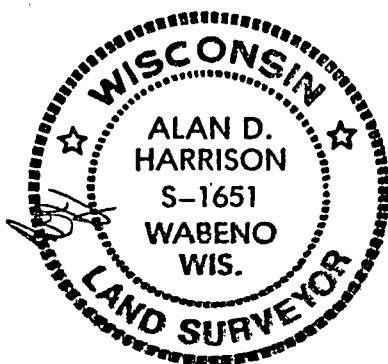
Black Cherry	8"	N.72°W.	41.02 feet
Black Cherry	6"	N.2°W.	76.15 feet
Iron Pipe	1½"	S.17°E.	8.15 feet
Steel Sign Post		Northwest	0.76 feet

SURVEYOR'S AFFIDAVIT

State of Wisconsin } SS
County of Forest }

I, Alan D. Harrison, Land Surveyor, U.S.D.A. Forest Service and a Registered Land Surveyor in the State of Wisconsin, do hereby certify that I have surveyed and subdivided Section 15, Township 35 North, Range 14 East, Fourth Principal Meridian, State of Wisconsin.

The plat map and the notes herewith are a correct representation of the land surveyed and divided. I have surveyed and subdivided said section in accordance with the rules for survey of the public lands and with the statutes of the State of Wisconsin.



Alan D. Harrison

LAND SURVEYOR, U.S.D.A. Forest Service
R.L.S. Number S-1651
State of Wisconsin

Plat Ready for Filing:

Shirley V. [Signature]

District Ranger

Date of Survey: 1991

