



Stock No. 26273

2-5-15

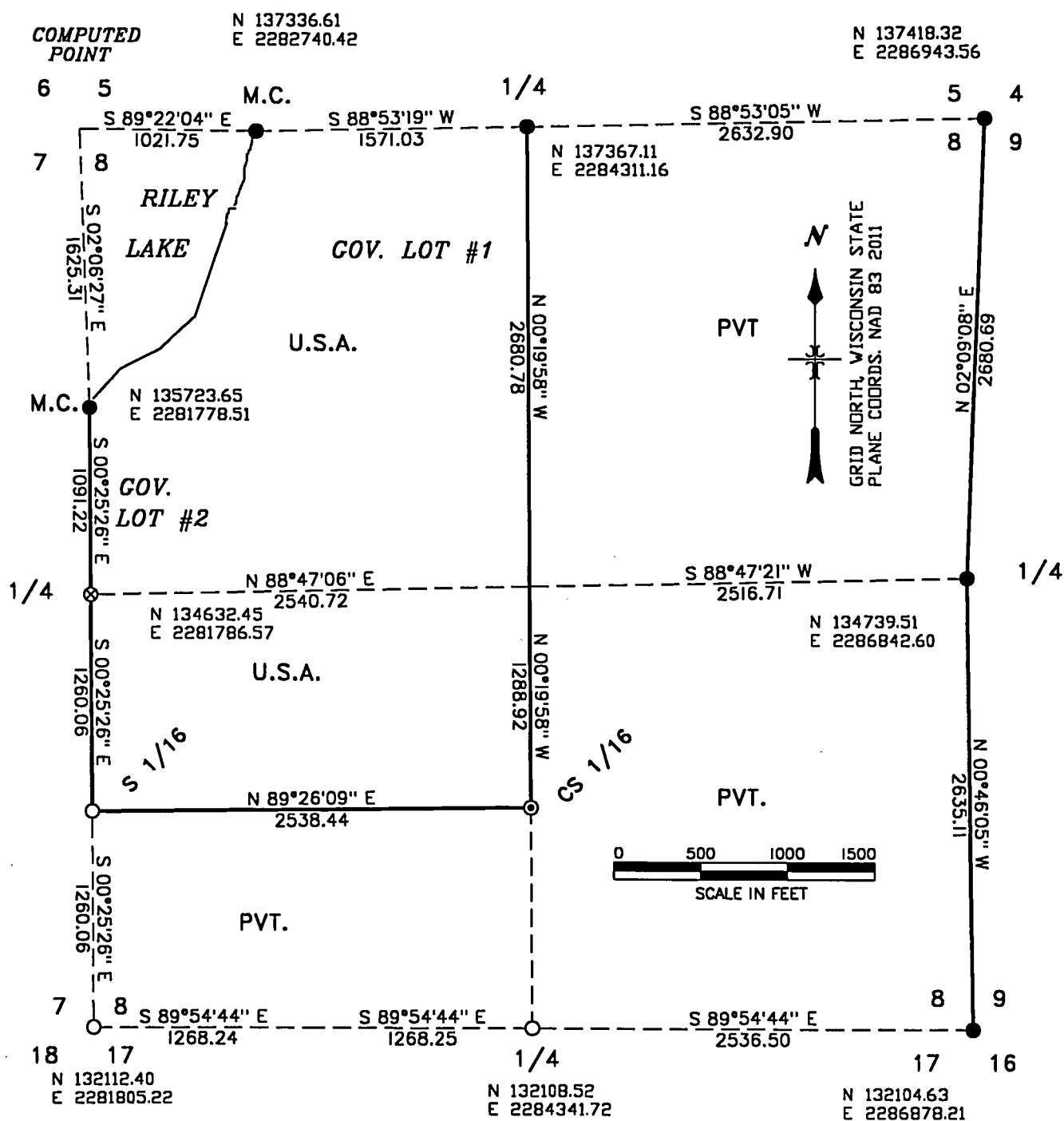
MAP OF SURVEY

FOREST CO SURVEYOR

FILE # 351408-20150166

DATE _____ BY _____

U.S. GOVERNMENT LANDS BEING GOVERNMENT LOTS #1 AND #2,
THE NORTH 1/2 SOUTHWEST 1/4, AND THE SE 1/4 NW 1/4,
OF SECTION 08, TOWNSHIP 35 NORTH, RANGE 14 EAST,
FOREST COUNTY, WISCONSIN.



● RECOVERED MONUMENT PREVIOUSLY PERPETUATED TO F.S. STANDARD.

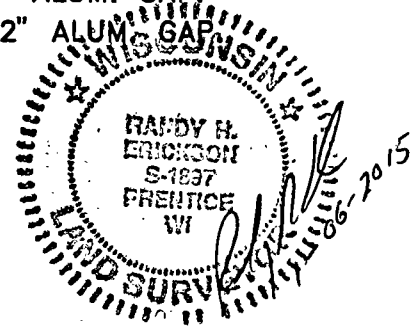
○ SET A 2" X 36" ALUMINUM PIPE MONUMENT WITH 3" ALUM. CAP.

⊙ SET A 2" X 60" ALUMINUM PIPE MONUMENT WITH A 3" ALUM. CAP.

⊗ SET A 1" X 36" ALUMINUM DRIVE MONUMENT WITH A 2" ALUM. CAP.

— LINE MARKED TO FOREST SERVICE STANDARD.

(N 263054) WISCONSIN NORTH ZONE STATE PLANE NAD 83 2011.





Stock No. 26273

**SURVEY NOTES SECTION 08
TOWNSHIP 35 NORTH, RANGE 14 EAST
Forest COUNTY, WISCONSIN**

THIS SURVEY WAS MADE BY THE U.S.D.A FOREST SERVICE AT THE REQUEST OF THE DISTRICT RANGER OF THE LAONA-LAKEWOOD DISTRICT OF THE CHEQUAMEGON-NICOLET NATIONAL FOREST. THE PURPOSE OF THIS SURVEY WAS TO RECOVER, RESTORE, ESTABLISH, MARK AND PERPETUATE THE CORNERS AND BOUNDARIES OF NATIONAL FOREST LANDS ON THE PERIMETER AND WITHIN SECTION 8, TOWNSHIP 35 NORTH, RANGE 14 EAST, FOREST COUNTY, WISCONSIN.

ORIGINAL SURVEY WAS MADE IN 1857 BY ALFRED MILLARD.

KIM PRITZLAFF RETRACED EAST LINE OF SECTION 8 IN 1985.

AL HARRISON RLS #1651 RETRACED THE NORTH LINE IN 1993.

THIS SURVEY WAS MADE USING VRS GPS FOR BOTH THE CONTROL AND MARKING OF THE BOUNDARY LINES. GPS SURVEY STANDARDS WERE ADHERED TO IN THE PROCESS OF THE SURVEY. BEARINGS AND DISTANCES ARE GRID, BASED ON WISCONSIN NORTH ZONE STATE PLANE COORDINATES, NAD 83.

BEARING TREES ARE BLAZED SCRIBED AND PAINTED RED. MEASUREMENTS TO BEARING TREES ARE TO ALUMINUM NAILS IN THE SIDE OF TREES ABOVE THE CENTER OF THE ROOT CROWN.

NO ENCROACHMENTS WERE FOUND ON NATIONAL FOREST LANDS DURING THIS SURVEY.

SURVEY WAS MADE IN SEPTEMBER OF 2014.

SURVEY CREW: RANDY ERICKSON, LAND SURVEYOR; GREG MAYER, SURVEYING TECHNICIAN.

CORNERS RECOVERED

1. MEANDER CORNER SECTIONS 5 AND 8, EAST SIDE RILEY LAKE, T 35 N, R 14 E.

RECOVERED MONUMENT AS DESCRIBED ON U.S. PUBLIC LAND SURVEY MONUMENT RECORD BY RLS #1651 IN 1993.

2. QUARTER CORNER SECTIONS 5 AND 8, T 35 N, R 14 E.

RECOVERED MONUMENT AS DESCRIBED ON U.S. PUBLIC LAND SURVEY MONUMENT RECORD BY RLS #1651 IN 1993.

3. NORTHEAST CORNER OF SECTION 8, T 35 N, R 14 E.

RECOVERED MONUMENT AS DESCRIBED ON U.S. PUBLIC LAND SURVEY MONUMENT RECORD BY RLS #1558 IN 1992.

4. MEANDER CORNER SECTIONS 7 AND 8, SOUTH SIDE OF RILEY LAKE, T 35 N, R 14 E.

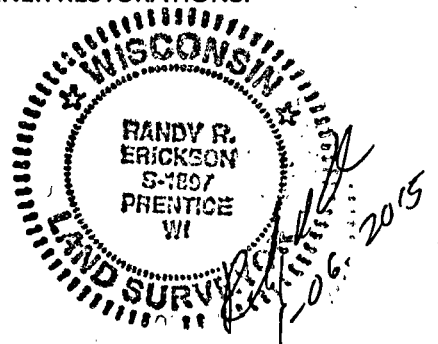
RECOVERED MONUMENT AS DESCRIBED ON PLAT OF SURVEY, PAGE 2 OF 4, BY RLS #1651 IN 1993. FILED JUNE 2 1993 WITH FOREST COUNTY CLERK.

5. QUARTER CORNER SECTION 8 AND 9, T 35 N, R 14 E.

RECOVERED MONUMENT AS DESCRIBED ON U.S. PUBLIC LAND SURVEY MONUMENT RECORD BY RLS #1259 IN 1985. FILE WITH FOREST COUNTY REGISTER OF DEEDS, DOCUMENT #128602.

6. SOUTHEAST CORNER SECTION 8, T 35 N, R 14 E.

RECOVERED MONUMENT AS DESCRIBED ON U.S. PUBLIC LAND SURVEY MONUMENT RECORD BY RLS #1558 IN 1986. FILED WITH FOREST COUNTY REGISTER OF DEEDS, J-9 OF CORNER RESTORATIONS.





Stock No. 26273

7. SOUTHWEST CORNER SECTION 8, T 35 N, R 14 E.

RECOVERED POST POINT IN MOUND OF STONE WITH BLAZED TREES FACING CORNER. BELIEVED TO BE CONNER LUMBER COMPANY CORNER. SET A 2" X 36" ALUMINUM PIPE WITH A 3" ALUMINUM CAP STAMPED TO IDENTIFY THE CORNER. PERPETUATION RECORD FILED WITH FOREST COUNTY IN 2015.

CORNERS RESTORED**1. QUARTER CORNER SECTIONS 7 AND 8, T 35 N, R 14 E.**

DETERMINED CORNER TO BE LOST. RESTORED CORNER BY SINGLE PROPORTIONATE BETWEEN THE SOUTHWEST CORNER OF SECTION 8 AND SOUTH MEANDER CORNER OF RILEY LAKE. SET A 1" X 36" ALUMINUM DRIVE MONUMENT, WITH A 3" ALUMINUM CAP STAMPED TO IDENTIFY THE CORNER. PERPETUATION RECORD FILED WITH FOREST COUNTY IN 2015.

2. QUARTER CORNER SECTIONS 8 AND 17, T 35 N, R 14 E.

DETERMINED CORNER TO BE LOST. RESTORED CORNER MID POINT ON LINE BETWEEN THE SOUTHEAST AND SOUTHWEST CORNERS OF SECTION 8. SET A 2" X 36" ALUMINUM MONUMENT WITH A 3" ALUMINUM CAP STAMPED TO IDENTIFY THE CORNER. PERPETUATION RECORD FILED WITH FOREST COUNTY IN 2015.

CORNERS ESTABLISHED**1. SOUTH 1/16 CORNER SECTIONS 7 AND 8, T 35 N, R 14 E.**

ESTABLISHED CORNER MID POINT ON LINE BETWEEN THE SOUTHWEST AND WEST QUARTER CORNERS OF SECTION 8. SET A 2" X 36" ALUMINUM MONUMENT WITH A 3" ALUMINUM CAP STAMPED TO IDENTIFY THE CORNER. MONUMENT EXTENDS 9" ABOVE GROUND. MARKED BEARING TREES:

WHITE ASH	14"	S 18° W	26.59 FEET
SUGAR MAPLE	14"	S 45° W	13.38 FEET
SUGAR MAPLE	12"	N 75° E	18.45 FEET
STEEL SIGN POST		EAST	1.3 FEET

2. CENTER SOUTH 1/16 CORNER SECTION 8, T 35 N, R 14 E.

ESTABLISHED CORNER MID POINT ON LINE BETWEEN THE SOUTH ¼ AND CENTER ¼ CORNERS OF SECTION 8. SET A 2" X 60" ALUMINUM DRIVE MONUMENT WITH A 3" ALUMINUM CAP STAMPED TO INDENTIFY THE CORNER. MONUMENT EXTENDS 10" ABOVE SWAMP. MARKED BEARING TREES:

CEDAR	5"	S 85° W	41.12 FEET
STEEL SIGN POST		NORTH	1.6 FEET

SURVEYOR'S AFFIDAVIT

STATE OF WISCONSIN)
COUNTY OF FOREST) SS

I RANDY R. ERICKSON, LAND SURVEYOR FOR THE U.S.D.A. FOREST SERVICE AND A PROFESSIONAL LAND SURVEYOR IN THE STATE OF WISCONSIN DO HEREBY CERTIFY THAT I HAVE RETRACED AND SUBDIVIDED SECTION 8, TOWNSHIP 35 NORTH, RANGE 15 EAST, 4TH P.M., FOREST COUNTY, WISCONSIN. DURING THIS SURVEY I HAVE COMPLIED WITH THE RULES FOR THE DIVISION OF THE PUBLIC LANDS AND APPLICABLE STATE RULES. THE MAP AND ACCOMPANYING NOTES ARE A CORRECT AND ACCURATE REPRESENTATION OF THE SURVEY TO THE BEST OF MY KNOWLEDGE AND BELIEF.


RANDY R. ERICKSON
WIS. PROFESSIONAL SURVEYOR #1897

DATE: 01-06-2015

