

Stock No. 26273

FOREST CO SURVEYOR

FILE # 351406-19930602

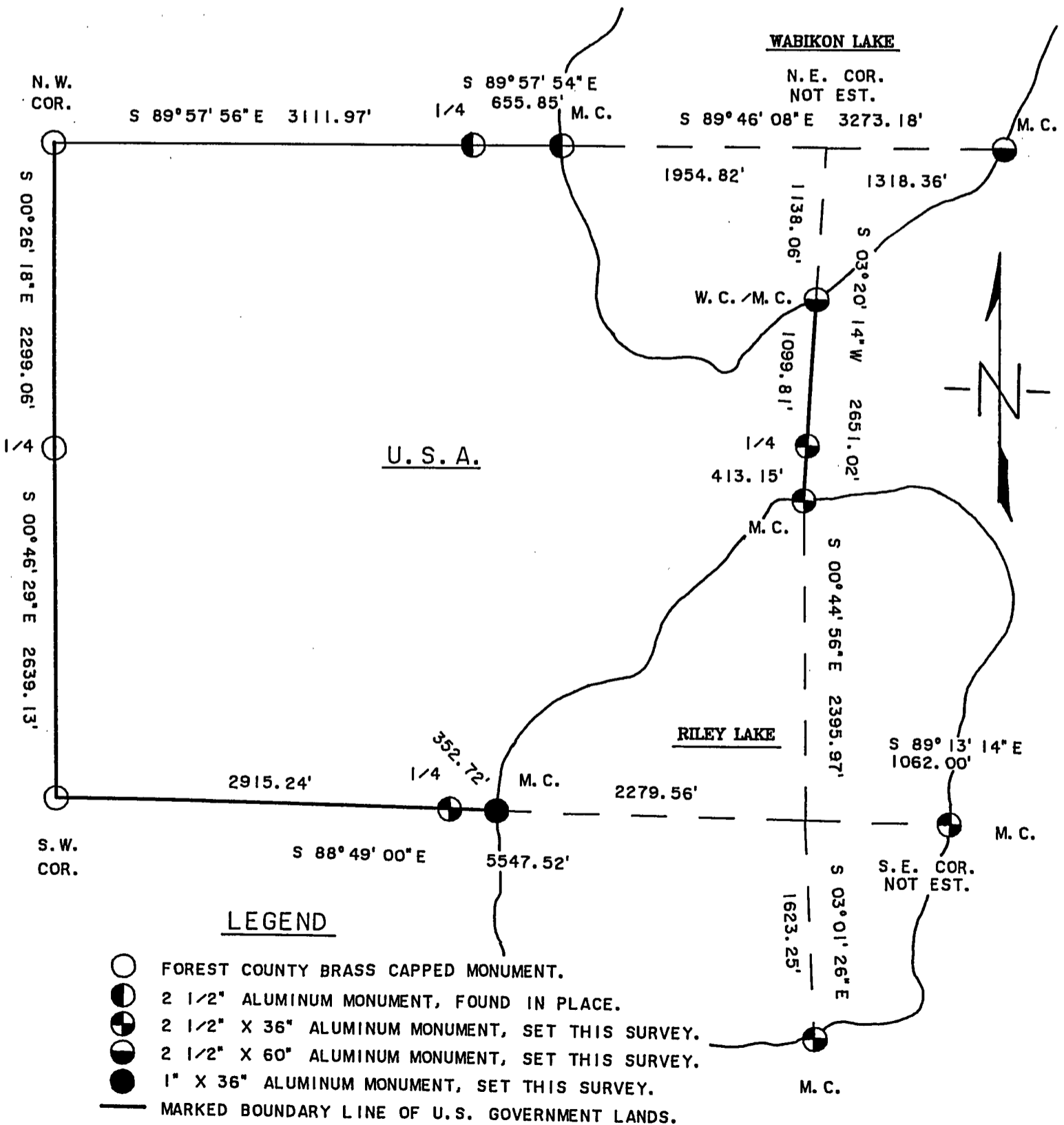
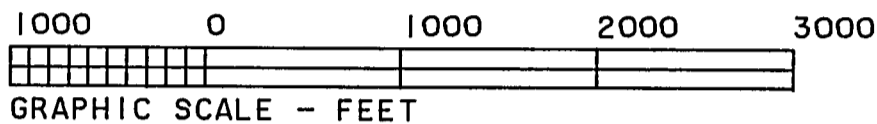
DATE _____ BY _____

SHEET 1 OF 4

PLAT OF SURVEY

U. S. GOVERNMENT LANDS

BEING ALL OF SECTION 6, TOWNSHIP 35 NORTH, RANGE 14 EAST,
FOURTH PRINCIPAL MERIDIAN, FOREST COUNTY,
WISCONSIN.





Stock No. 26273

Sheet 2 of 4

SURVEY NOTES

This survey was made by the U.S. Department of Agriculture, Forest Service, for the purpose of restoring and establishing corners on the perimeter of Section 6, for establishing subdivisional corners within Section 6, and for locating and marking the boundaries of U.S. Government land on their perimeter and within Section 6, Township 35 North, Range 14 East, Fourth Principal Meridian, Forest County, Wisconsin.

The U.S. Government lands in this section were acquired in 1986.

The original government subdivision survey of this township was made in 1857 & 1859.

The corner positions recovered, restored and established by this survey are marked by the monument described in the map legend.

The corner positions established were located to an accuracy of one part in 5000.

The bearings between corner positions are true bearings as determined by solar observations.

The field notes of this survey and a copy of this plat are on file in the Forest Supervisor's Office at Rhineland, Wisconsin.

CORNERS RECOVERED OR RESTORED1. Corner Common to Sections 6, 36, 25, and 30.

Corner recovered as set by C.E. Walker. Certificate by T. Arnott on file in Forest County, document no. 127711.

2. Corner Common to Sections 1, 6, 7, and 12.

Corner recovered as set by C.E. Walker.

Corner References:

Hemlock	10"	S.67°E.	37.65 feet
Yellow Birch	8"	S.54°E.	64.50 feet
Tamarack	6"	S.11°W.	72.30 feet
Maple	8"	N.53°W.	51.26 feet
Steel Sign Post		Northeast	0.90 feet

3. Quarter Corner Common to Sections 6 and 1.

Corner recovered as set by C.E. Walker. Certificate by T. Arnott on file in Forest County, document no. 108633.

4. Meander Corner Common to Sections 7 and 8.

Corner recovered marked by iron pipe set by Connor Company, to perpetuate original corner location.

Corner References:

Hemlock	14"	S.32°E.	4.21 feet
Hemlock	12"	S.28°W.	43.65 feet
Cedar	5"	N.31°W.	4.84 feet
Steel Sign Post		Southeast	0.88 feet

5. Quarter Corner Common to Sections 6 and 30.

Corner recovered as set by Milo Stefan R.L.S. Certificate on file in Forest County, document no. 127713.

6. Meander Corner Common to Sections 31 and 6.

Corner recovered as set by Milo Stefan R.L.S. Certificate on file in Forest County, document no. 127712.



Stock No. 26273

Sheet 3 of 4

7. Meander Corner East side Wabikon Lake Common to Sections 5 and 32.

Corner position established at proportionate position.

Corner References:

Cedar	13"	S.47°E.	14.70 feet
Cedar	12"	N.62°E.	19.35 feet
Steel Sign Post		Northwest	0.81 feet

8. Meander Corner Common to Sections 5 and 6, Wabikon Lake.

Corner position established at a distance of 23.70 feet south of proportionate position which falls in unstable bog.

Corner References:

Cedar	9"	S.69°E.	14.61 feet
Cedar	11"	S.28°W.	10.72 feet
Steel Sign Post		South	1.09 feet

9. Quarter Corner Common to Sections 5 and 6.

Corner established at single proportionate position.

Corner References:

Sugar Maple	10"	N.68°E.	18.58 feet
Sugar Maple	7"	S.18°W.	3.30 feet
Sugar Maple	5"	S.85°W.	28.16 feet
Steel Sign Post		North	0.96 feet

10. Meander Corner Common to Sections 5 and 6 on Riley Lake.

Corner position established from natural feature call as best available corner location.

Corner References:

Cedar	8"	N.36°E.	20.17 feet
Sugar	10"	N.37°W.	20.25 feet
Steel Sign Post		South	0.74 feet

11. Meander Corner Common to Sections 5 and 8, Riley Lake.

Corner position established at proportionate position.

Corner References:

Balsam	4"	N.70°E.	30.62 feet
Balsam	6"	S.50°E.	39.59 feet
Steel Sign Post		West	0.92 feet

12. Meander Corner Common to Sections 6 and 7.

Corner position established at proportionate position.

Corner References:

Cedar	10"	S.72°W.	12.81 feet
Sugar	4"	N.28°W.	21.10 feet
Steel Sign Post		West	0.90 feet

Distance to high water mark is 97.0 feet

13. Quarter Corner Common to Sections 6 and 7.

Corner position established at single proportional position.

Corner References:

Sugar	6"	S.49°E.	16.16 feet
Sugar	6"	S.8°E.	5.44 feet
Sugar	5"	N.25°W.	30.69 feet
Steel Sign Post		East	0.86 feet

Stock No. 26273

Sheet 4 of 4

SURVEYOR'S AFFIDAVIT

State of Wisconsin]
County of Forest]

I, Alan D. Harrison, Land Surveyor, U.S.D.A. Forest Service and a Registered Land Surveyor in the State of Wisconsin, do hereby certify that I have surveyed and subdivided Section 6, Township 35 North, Range 14 East, Fourth Principal Meridian, Stat of Wisconsin.

The plat map and the notes herewith are a correct representation of the land surveyed and divided. I have surveyed and subdivided said section in accordance with the rules for survey of the public lands and with the statutes of the State of Wisconsin.



Alan D. Harrison
LAND SURVEYOR, U.S.D.A. Forest Service
R.L.S. Number S-1651
State of Wisconsin

Date of Survey: 1992

Plat Ready for Filing:

Sue Vas
District Ranger