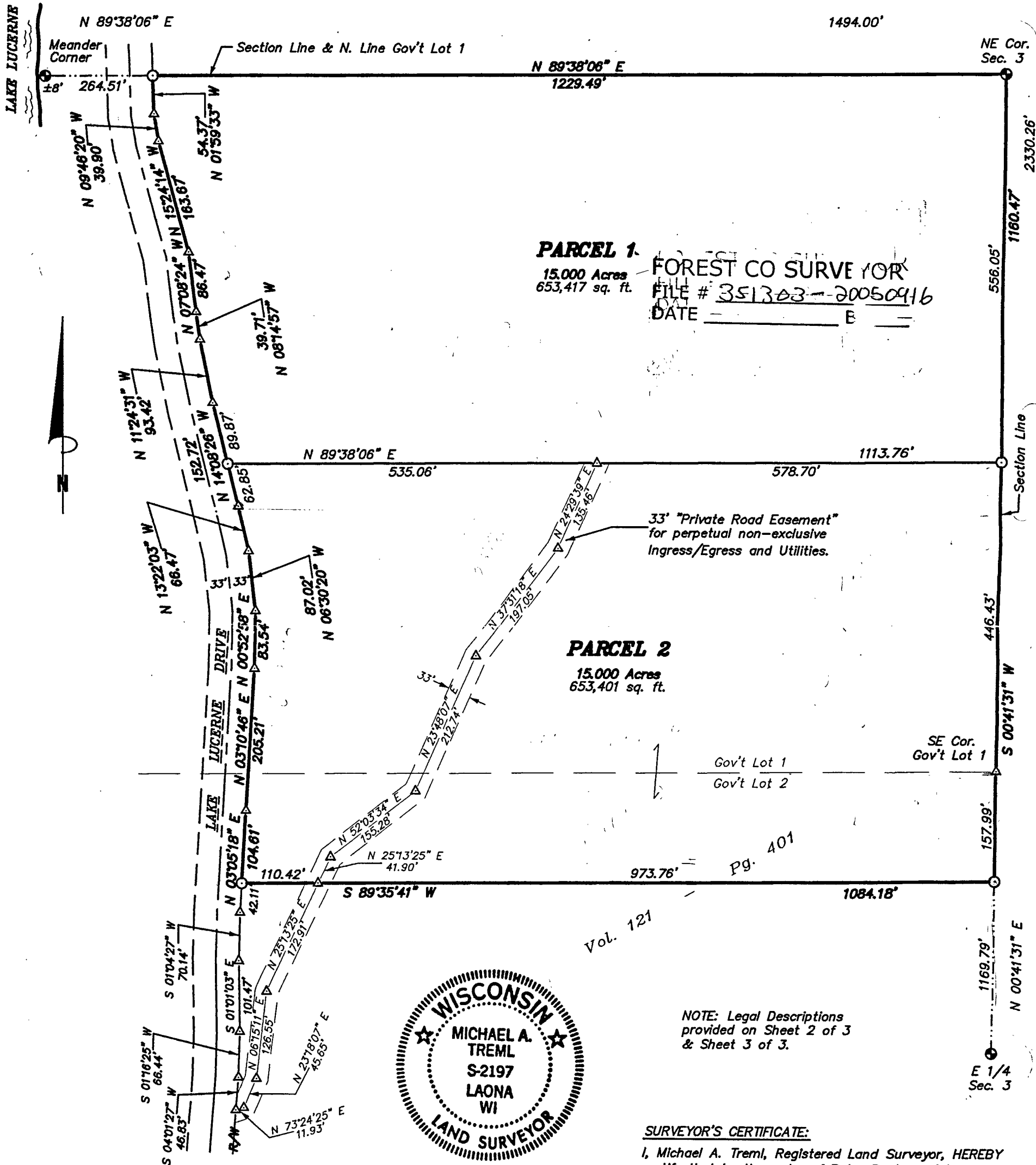


Peter Davison

PLAT OF SURVEY

PART OF GOV'T LOT 1 & PART OF GOV'T LOT 2 OF SECTION 3,
T35N, R13E, TOWN OF LINCOLN, FOREST COUNTY, WISCONSIN



Bearings are referenced to the North Line of Gov't Lot 1 assumed to bear N 89°38'06" E.

150 0 150 300 450



Scale: 1" = 150'

DRAWN BY: KRM

DWG. NO.: 2142-05

CHECKED BY: MAT

LEGEND:

- ⊙ EXISTING 2" BRASS CAPPED IRON PIPE
- SET 1" O.D. x 20" IRON PIPE
- △ COMPUTED POSITION

SHT. NO.

1 OF 3

LEGAL DESCRIPTION

PARCEL 1

Part of Gov't Lot 1 of Section 3, Township 35 North, Range 13 East, Town of Lincoln, Forest County, Wisconsin, more particularly described as follows:

BEGINNING at the Northeast Corner of said Section 3; thence South 00 degrees 41 minutes 31 seconds West along the East Line of said Section 3, a distance of 556.05 feet; thence South 89 degrees 38 minutes 06 seconds West, a distance of 1113.76 feet to the Easterly Right-of-Way Line of Lake Lucerne Drive; thence North 14 degrees 08 minutes 26 seconds West along said Right-of-Way Line, a distance of 89.87 feet; thence North 11 degrees 24 minutes 31 seconds West along said Right-of-Way Line, a distance of 93.42 feet; thence North 08 degrees 14 minutes 57 seconds West along said Right-of-Way Line, a distance of 39.71 feet; thence North 07 degrees 08 minutes 24 seconds West along said Right-of-Way Line, a distance of 86.47 feet; thence North 15 degrees 24 minutes 14 seconds West along said Right-of-Way Line, a distance of 163.67 feet; thence North 09 degrees 46 minutes 20 seconds West along said Right-of-Way Line, a distance of 39.90 feet; thence North 01 degrees 59 minutes 33 seconds West along said Right-of-Way Line, a distance of 54.37 feet to the North Line of said Gov't Lot 1; thence North 89 degrees 38 minutes 06 seconds East along the North line of said Gov't Lot 1, a distance of 1229.49 feet to the POINT OF BEGINNING.

Subject to any easements, covenants and restrictions of record.

Also, granting a road easement for perpetual non-exclusive ingress, egress and utilities, said easement being 33 feet wide, 16.5 feet on either side of the following described centerline:

Commencing at the Northeast Corner of said Section 3; thence South 00 degrees 41 minutes 31 seconds West along the East Line of said Section 3, a distance of 1160.47 feet; thence South 89 degrees 35 minutes 41 seconds West, a distance of 1084.18 feet to the Easterly Right-of-Way Line of Lake Lucerne Drive; thence South 03 degrees 05 minutes 18 seconds West along said Right-of-Way Line, a distance of 42.11 feet; thence South 01 degrees 04 minutes 27 seconds West along said Right-of-Way Line, a distance of 70.14 feet; thence South 01 degrees 01 minutes 03 seconds East along said Right-of-Way Line, a distance of 101.47 feet; thence South 01 degrees 16 minutes 25 seconds West along said Right-of-Way Line, a distance of 66.44 feet; thence South 04 degrees 01 minutes 27 seconds West along said Right-of-Way Line, a distance of 46.83 feet to the POINT OF BEGINNING of said centerline of road easement; thence North 73 degrees 24 minutes 25 seconds East along said centerline, a distance of 11.93 feet, thence North 23 degrees 18 minutes 07 seconds East along said centerline, a distance of 45.65 feet; thence North 06 degrees 15 minutes 11 seconds East along said centerline, a distance of 126.55 feet; thence North 25 degrees 13 minutes 25 seconds East along said centerline, a distance of 214.81 feet; thence North 52 degrees 03 minutes 34 seconds East along said centerline, a distance of 155.28 feet; thence North 23 degrees 48 minutes 07 seconds East along said centerline, a distance of 212.74 feet; thence North 37 degrees 31 minutes 18 seconds East along said centerline, a distance of 197.05 feet; thence North 24 degrees 29 minutes 39 seconds East along said centerline, a distance of 135.46 feet to the South line of the above described parcel and the end of said road easement.

LEGAL DESCRIPTION

PARCEL 2

Part of Gov't Lot 1 & Part of Gov't Lot 2 of Section 3, Township 35 North, Range 13 East, Town of Lincoln, Forest County, Wisconsin, more particularly described as follows:

Commencing at the Northeast Corner of said Section 3; thence South 00 degrees 41 minutes 31 seconds West along the East Line of said Section 3, a distance of 556.05 feet to the POINT OF BEGINNING; thence continue South 00 degrees 41 minutes 31 seconds West along said line, a distance of 604.42 feet; thence South 89 degrees 35 minutes 41 seconds West, a distance of 1084.18 feet to the Easterly Right-of-Way Line of Lake Lucerne Drive; thence North 03 degrees 05 minutes 18 seconds East along said Right-of-Way Line, a distance of 104.61 feet; thence North 03 degrees 10 minutes 46 seconds East along said Right-of-Way Line, a distance of 205.21 feet; thence North 00 degrees 52 minutes 58 seconds East along said Right-of-Way Line, a distance of 83.54 feet; thence North 06 degrees 30 minutes 20 seconds West along said Right-of-Way Line, a distance of 87.02 feet; thence North 13 degrees 22 minutes 03 seconds West along said Right-of-Way Line, a distance of 66.47 feet; thence North 14 degrees 08 minutes 26 seconds West along said Right-of-Way Line, a distance of 62.85 feet; thence North 89 degrees 38 minutes 06 seconds East, a distance of 1113.76 feet to the POINT OF BEGINNING.

Subject to a 33 foot wide "Private Road Easement" for Ingress/Egress and utilities running Northeasterly through above described parcel.

Also, granting a road easement for perpetual non-exclusive ingress, egress and utilities, said easement being 33 feet wide, 16.5 feet on either side of the following described centerline:

Commencing at the Northeast Corner of said Section 3; thence South 00 degrees 41 minutes 31 seconds West along the East Line of said Section 3, a distance of 1160.47 feet; thence South 89 degrees 35 minutes 41 seconds West, a distance of 1084.18 feet to the Easterly Right-of-Way Line of Lake Lucerne Drive; thence South 03 degrees 05 minutes 18 seconds West along said Right-of-Way Line, a distance of 42.11 feet; thence South 01 degrees 04 minutes 27 seconds West along said Right-of-Way Line, a distance of 70.14 feet; thence South 01 degrees 01 minutes 03 seconds East along said Right-of-Way Line, a distance of 101.47 feet; thence South 01 degrees 16 minutes 25 seconds West along said Right-of-Way Line, a distance of 66.44 feet; thence South 04 degrees 01 minutes 27 seconds West along said Right-of-Way Line, a distance of 46.83 feet to the POINT OF BEGINNING of said centerline of road easement; thence North 73 degrees 24 minutes 25 seconds East along said centerline, a distance of 11.93 feet, thence North 23 degrees 18 minutes 07 seconds East along said centerline, a distance of 45.65 feet; thence North 06 degrees 15 minutes 11 seconds East along said centerline, a distance of 126.55 feet; thence North 25 degrees 13 minutes 25 seconds East along said centerline, a distance of 172.91 feet to the South line of the above described parcel and the end of said road easement.