

# -PLAT OF SURVEY-

LANDS BEING THE NORTH AND WEST LINES OF DOCUMENT NO. 100038,  
 LOCATED IN PART OF THE NE.1/4 OF THE NE.1/4,  
 SECTION 12, T.35N., R.12E., TOWN OF NASHVILLE,  
 FOREST COUNTY, WISCONSIN



BEARINGS ARE REFERENCED  
 TO COUNTY COORDINATE  
 SYSTEM

12-35-12

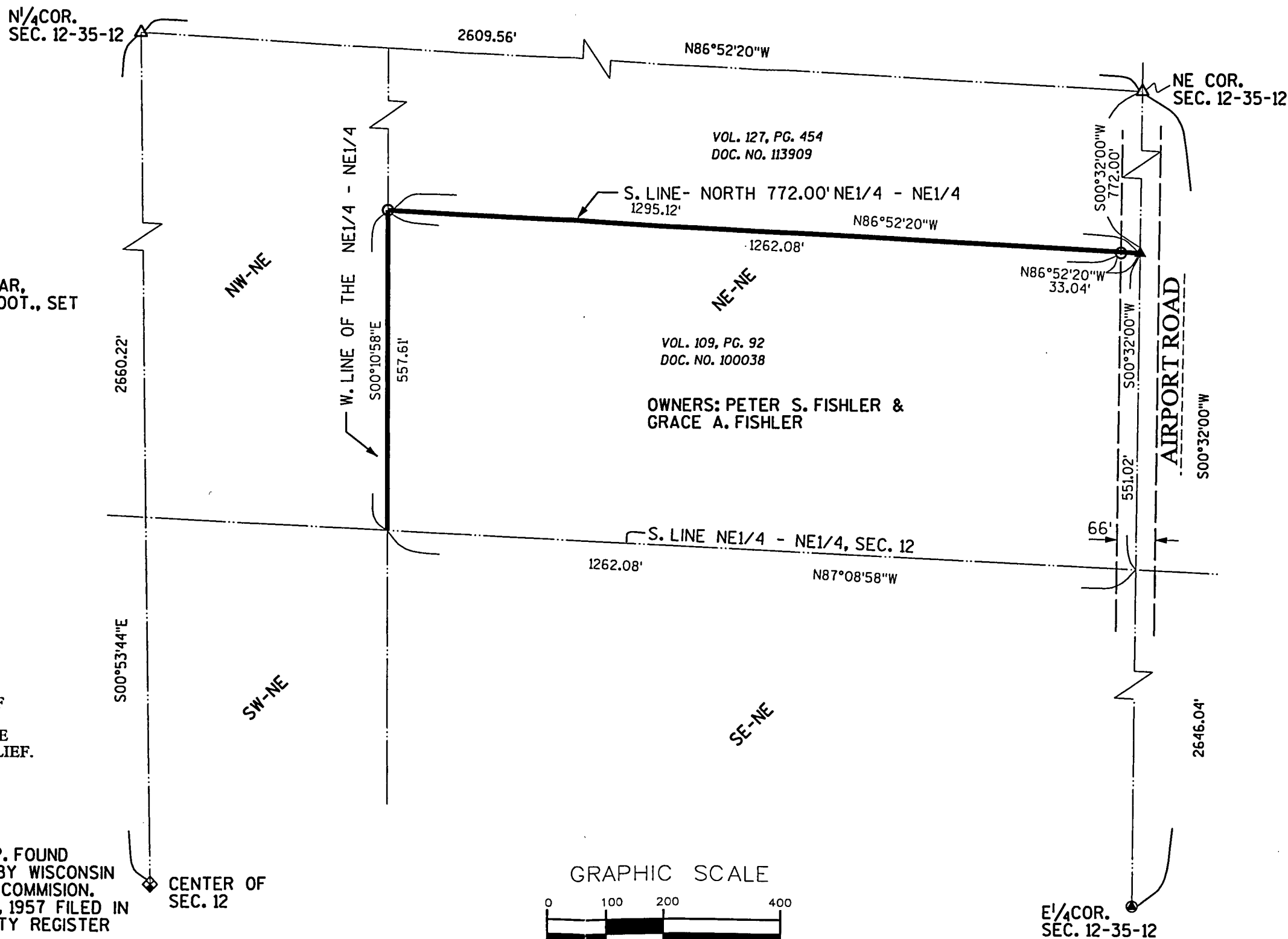
### LEGEND

- 3/4" DIA. X 18" LONG REBAR, WEIGHING 1.5lbs/LINEAL FOOT., SET
- ▲ P.K. NAIL, SET
- △ P.K. NAIL, FOUND
- R.R. SPIKE, FOUND



I, EUGENE C. UTTECH, REGISTERED  
 LAND SURVEYOR OF THE STATE OF  
 WISCONSIN DO HEREBY CERTIFY  
 THIS IS TRUE AND CORRECT TO THE  
 BEST OF MY KNOWLEDGE AND BELIEF.

NOTE: 1/4" I.P. FOUND  
 SEE SURVEY BY WISCONSIN  
 AERONAUTICS COMMISSION.  
 DATED: AUG. 9, 1957 FILED IN  
 FOREST COUNTY REGISTER  
 OF DEEDS.



GRAPHIC SCALE



1 inch = 200 ft.

FOREST CO SURVEYOR  
 FILE # 351212-20070312  
 DATE \_\_\_\_\_ BY \_\_\_\_\_

|                                                                                                                                                                         |                                                           |
|-------------------------------------------------------------------------------------------------------------------------------------------------------------------------|-----------------------------------------------------------|
| <b>MSA</b><br>PROFESSIONAL SERVICES                                                                                                                                     |                                                           |
| TRANSPORTATION • MUNICIPAL<br>DEVELOPMENT • ENVIRONMENTAL<br>300 N. Monroe St., Wausau, WI 54981<br>Tel: 715-841-1400 Fax: 715-841-1401<br>© 2007 PROFESSIONAL SERVICES | BY _____<br>DATE _____                                    |
| PROJECT NO. 980706<br>DATE 11/20/06<br>SCALE 1"=200'                                                                                                                    | FILE NO. 351212-20070312<br>DATE 3/14/07<br>DRAWN BY P.F. |
| PETER FISHLER<br>4407 AIRPORT ROAD<br>CRANDON, WI                                                                                                                       | 1 OF 1                                                    |

9-14-07

22-260