

FOREST CO SURVEYOR

FILE # 34533-199401

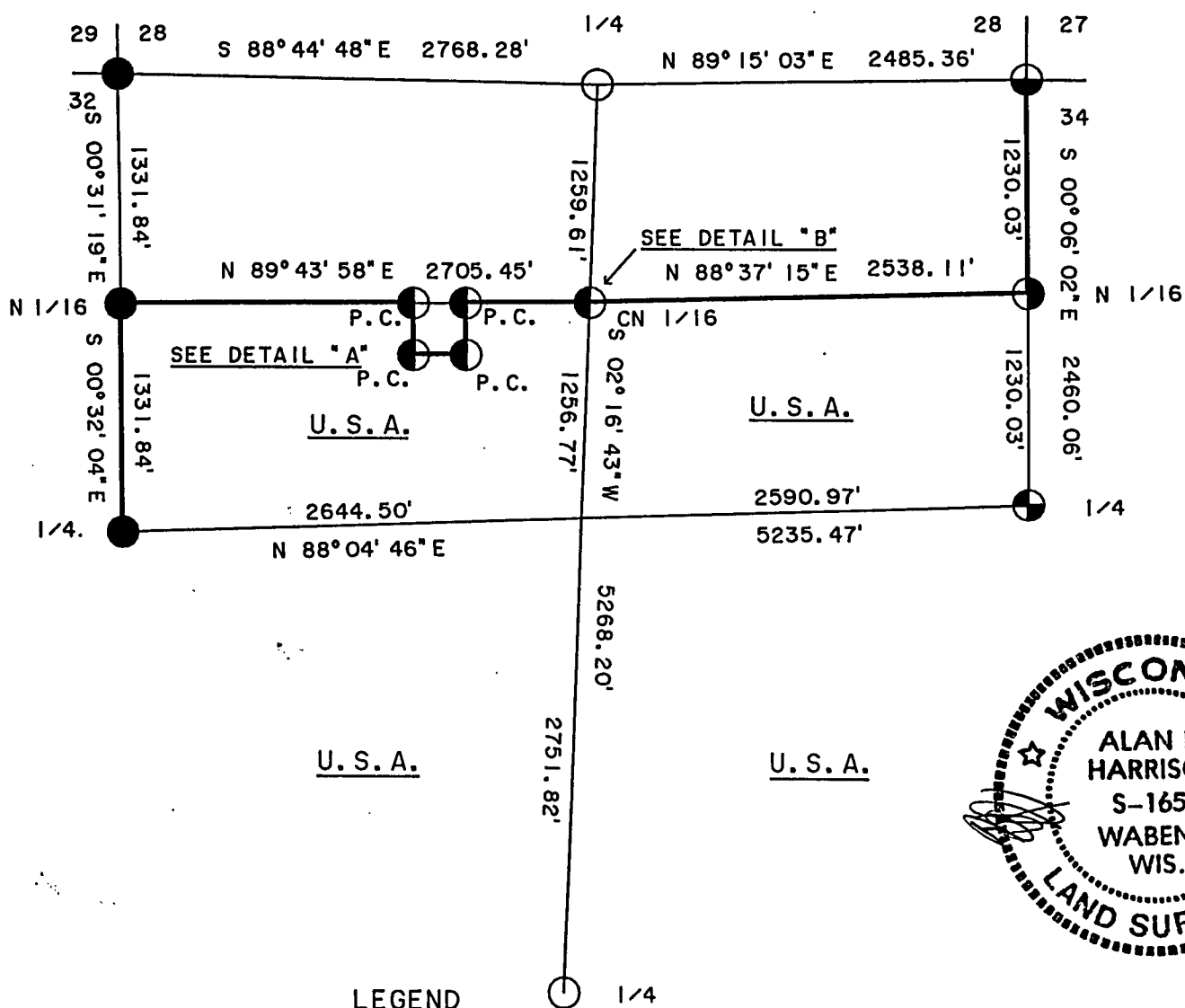
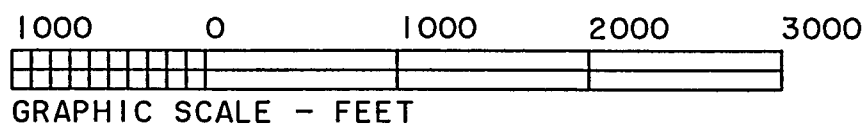
DATE _____ BY _____

SHEET 1 OF 5

PLAT OF SURVEY

U. S. GOVERNMENT LANDS

BEING THE SOUTH 1/2, N.E. 1/4; THE SOUTH 1/2, N.W. 1/4, EXCEPTING
2.07 ACRES; AND THE SOUTH 1/2; ALL OF SECTION 33; TOWNSHIP 34 NORTH;
RANGE 15 EAST; FOURTH PRINCIPAL MERIDIAN;
FOREST COUNTY; WISCONSIN.



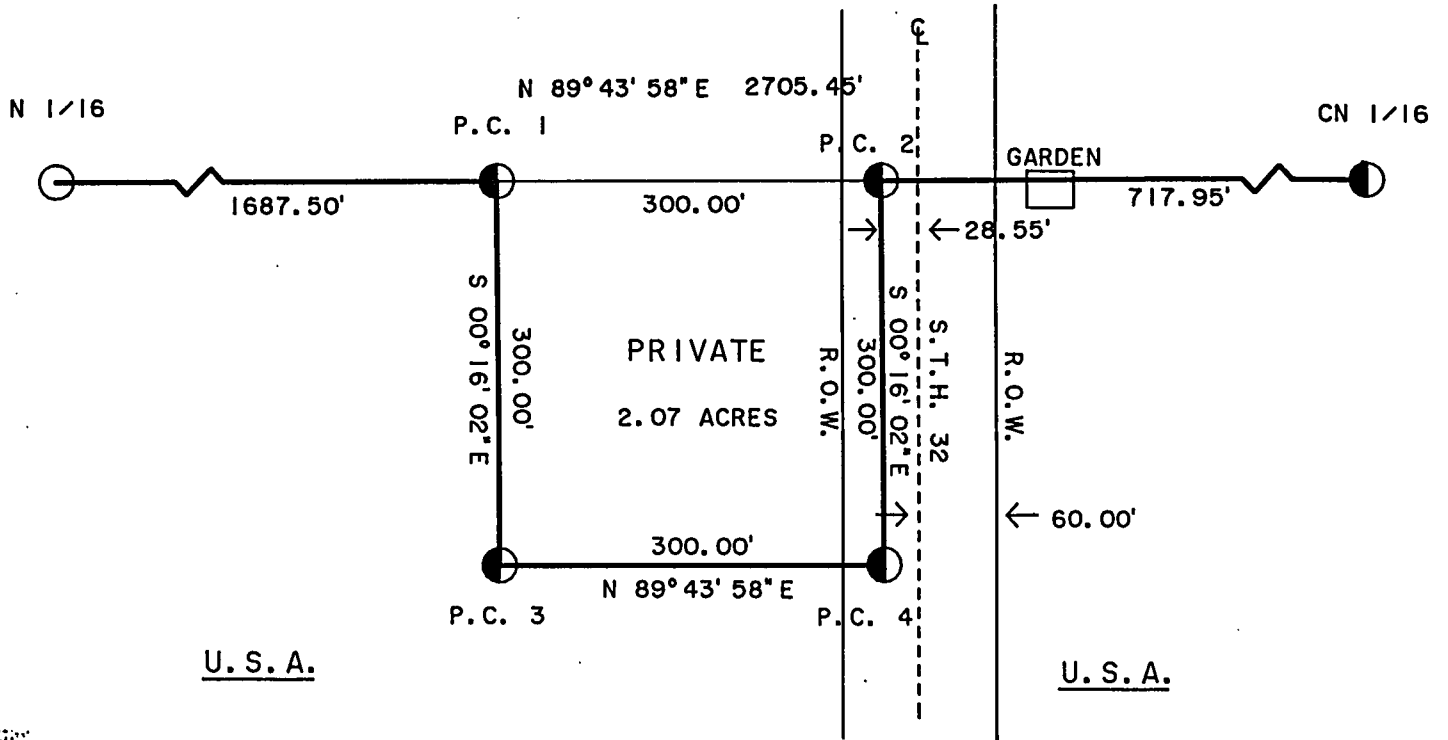
- FOREST COUNTY MONUMENT, FOUND IN PLACE.
- 2" DIA. BRASS CAPPED MONUMENT, FOUND IN PLACE.
- ⊕ 2 1/2" ALUMINUM MONUMENT, FOUND IN PLACE.
- ◐ 2 1/2" X 36" ALUMINUM MONUMENT, SET THIS SURVEY.
- ◑ 1" X 36" ALUMINUM MONUMENT, SET THIS SURVEY.
- ◒ 1" X 60" ALUMINUM MONUMENT, SET THIS SURVEY.
- MARKED PROPERTY BOUNDARY OF U. S. GOVERNMENT LANDS.
- P.C. PROPERTY CORNER SET THIS SURVEY.

DETAIL "A"

BEING THE 2.07 ACRE EXCEPTION IN THE S.E. 1/4, N.W. 1/4;

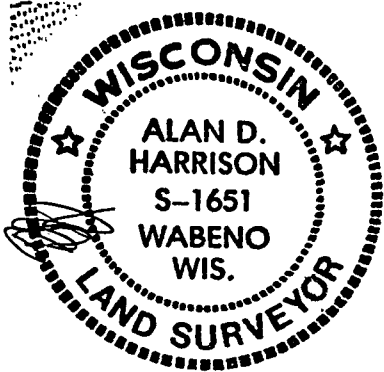
AS DEEDED TO STANLEY AND VERA KULCZYSKI.

SCALE - 1" = 150'



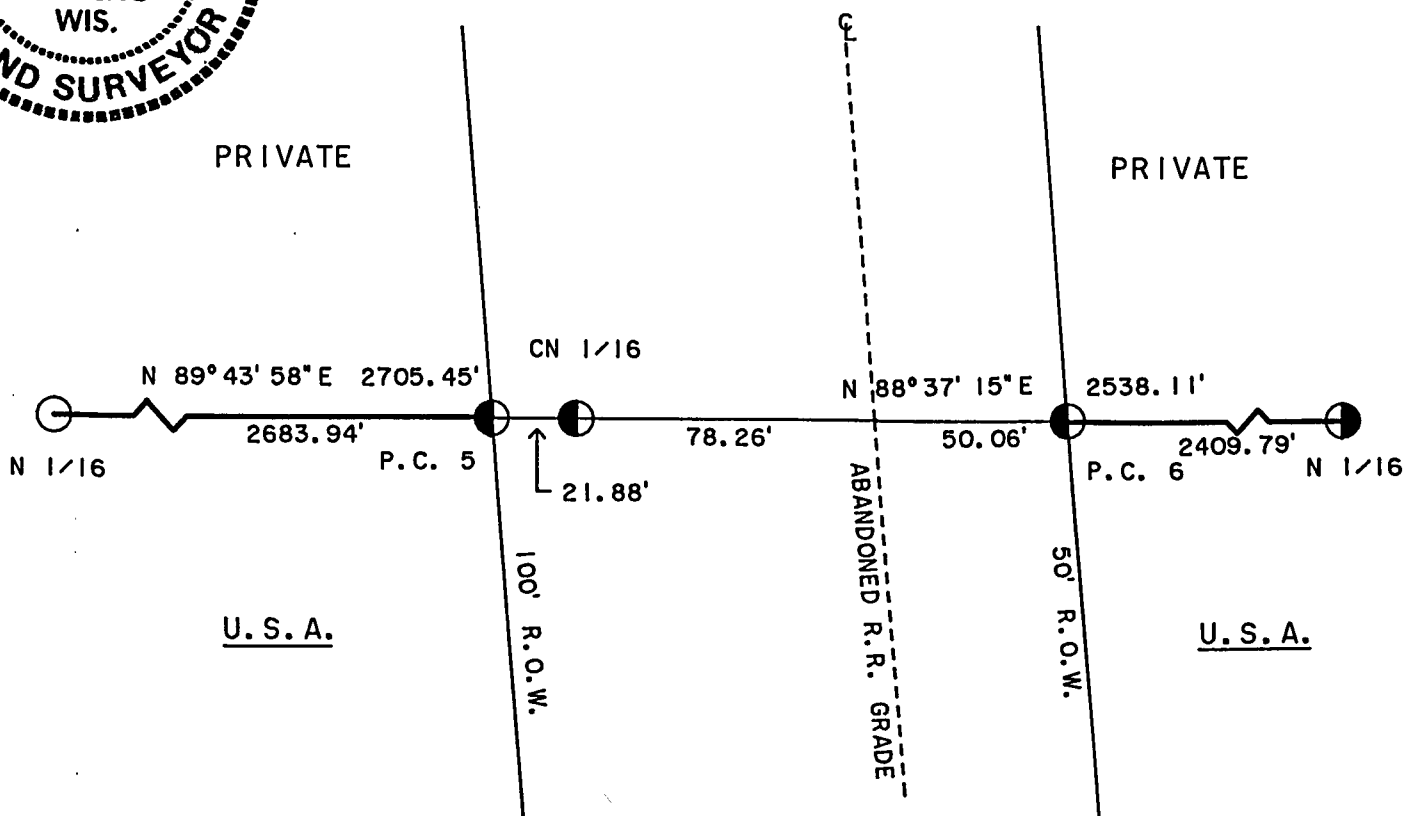
U. S. A.

U. S. A.



DETAIL "B"

SCALE - 1" = 50'



PRIVATE

PRIVATE

U. S. A.

U. S. A.

SURVEY NOTES

This survey was made by the U.S. Department of Agriculture, Forest Service, for the purpose of restoring and establishing corners on the perimeter of Section 33 for establishing subdivisional corners within Section 33 and for locating and marking the boundaries of U.S. Government land on their perimeter and within Section 33 Township 34 North, Range 15 East, 4th Principal Meridian, Forest County, Wisconsin.

The U.S. Government lands in this section were acquired in 1935 and 1944.

The original government subdivision survey of this township was made in 1859. Nathan Smith made local surveys in 1899 and 1906.

The corner positions recovered, restored and established by this survey are marked by the monument described in the map legend.

The corner positions established were located to an accuracy of one part in 5000.

The bearings between corner positions are true bearings as determined by solar observations.

The field notes of this survey and a copy of this plat are on file in the Forest Supervisor's Office at Rhinelander, Wisconsin.

CORNERS RECOVERED OR RESTORED1. Corner Common to Sections 28, 29, 32 and 33.

Corner found monumented by Milo Stefan, R.L.S. Corner certificate on file in Forest County.

2. Corner Common to Sections 27, 28, 33 and 34.

Corner restored by retracement of N. Smith's 1906 survey and center - line of old road. Creek calls support this restored position.

Corner References:

Tamarack	3"	N.58°E.	43.06 feet
Tamarack	3"	S.02°W.	42.95 feet
Iron Pipe	1"	S.89°W.	28.47 feet
Tamarack	4"	N.27°W.	35.23 feet
Steel Sign Post		East	1.07 feet

3. Quarter Corner Common to Sections 33 and 34.

Corner found monumented by Jean Resvick, R.L.S. Corner certificate on file in Forest County.

Added New Corner Reference:

Cedar	12"	S.15°E.	31.15 feet
-------	-----	---------	------------

4. Quarter Corner Common to Sections 32 and 33.

Corner found monumented by Jean Resvick, R.L.S. Corner certificate on file in Forest County.

Added New Corner Reference:

Sugar	8"	S.48°E.	30.20 feet
-------	----	---------	------------

5. Quarter Corner Common to Sections 28 and 33.

Corner found monumented by Wayne Dobbratz, R.L.S. Corner certificate on file in Forest County.

Added New Corner Reference:

Steel Sign Post	South	5.60 feet (from W.C. Monument)
-----------------	-------	--------------------------------

6. North One-Sixteenth Corner Common to Sections 32 and 33.

Corner found monumented by Jean Resvick, R.L.S.

Corner References Recovered:

(Dead) Basswood	12"	N.67°E.	6.99 feet
Basswood	10"	S.32°W.	19.29 feet
Basswood	12"	N.51°W.	16.60 feet
Steel Sign Post		North	1.5 feet

7. Center-North One-Sixteenth Corner of Section 33.

Corner found marked by a 2" diameter iron pipe set from N.Smith's 1899 survey for the Plat of Carter.

Corner References:

Maple	6"	N.72°E.	2.97 feet
Aspen	5"	S.01°E.	9.05 feet
Steel Sign Post		South	0.95 feet

CORNERS ESTABLISHED1. North One-Sixteenth Corner Common to Sections 33 and 34.

Corner established at mid-point and on line between the Norhteast Section Corner and the East Quarter Corner.

Corner References:

Tamarack	6"	S.43°W.	47.79 feet
Tamarack	8"	N.54°W.	49.07 feet
Steel Sign Post		Southeast	1.50 feet

2. Property Corner # 1 in Section 33.

Corner established as per deed of Stanley Kulczyski and Verna H. Kulczyski recorded on page 105 of Volume 22 in Forest County records.

Corner References:

Center-line Hwy 32		East	28.10 feet
Power Pole #3415		S.11°W.	12.81 feet
33W112			
Right-of-way marker		S.86°W.	32.18 feet
Power Pole #3415		N.20°W.	60.84 feet
33W68			
Steel Sign Post		West	32.18 feet

3. Property Corner #2 in Section 33.

Corner established as per deed of Stanley Kulczyski and Verna H. Kulczyski recorded on page 105 of Volume 22 in Forest County records.

Corner References:

Red Pine	10"	S.41°E.	18.85 feet
Aspen	6"	S.56°W.	14.50 feet
Steel Sign Post		South	1.70 feet

4. Property Corner #3 in Section 33.

Corner established as per deed of Stanley Kulczyski and Verna H. Kulczyski recorded on page 105 of Volume 22 in Forest County records.

Corner References:

Maple	7"	South	18.32 feet
Maple	9"	N.52°W.	13.34 feet
Steel Sign Post		South	0.87 feet

5. Property Corner #4 in Section 33.

Corner established as per deed of Stanley Kulczyski and Verna H. Kulczyski recorded on page 105 of Volume 22 in Forest County records.

Corner References:

Center-line Hwy 32		East	29.00 feet
Maple	6"	S.40°W.	48.63 feet
Right-of-way marker		S.89°W.	45.76 feet
Maple	9"	S.42°W.	37.48 feet
Steel Sign Post		West	19.70 feet

6. Property Corner #5 in Section 33.

Corner established 100' west of the centerline of the abandoned C.&N.W. R.R. grade and west on true line 21.88' from the center-north sixteenth corner.

7. Property Corner #6 in Section 33.

Corner established 50' east of the centerline of the abandoned C.&N.W. R.R. grade and east on true line 128.32' from the center-north sixteenth corner.

SURVEYOR'S AFFIDAVIT

State of Wisconsin]
County of Forest]

I, Alan D. Harrison, Land Surveyor, U.S.D.A. Forest Service and a Registered Land Surveyor in the State of Wisconsin, do hereby certify that I have surveyed and subdivided Section 33, Township 34 North, Range 15 East, Fourth Principal Meridian, State of Wisconsin.

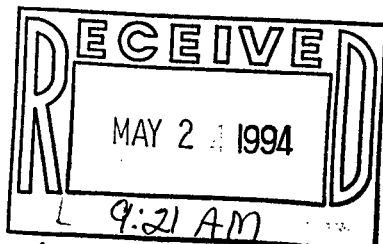
The plat map and the notes herewith are a correct representation of the land surveyed and divided. I have surveyed and subdivided said section in accordance with the rules for survey of the public lands and with the statutes of the State of Wisconsin.



Alan D. Harrison
LAND SURVEYOR, U.S.D.A. Forest Service
R.L.S. Number S-1651
State of Wisconsin

Date of Survey: January, 1994

Plat Ready for Filing:



Sandra L. Redds
Clerk / Bkpr

Elmer Sprague
for District Ranger