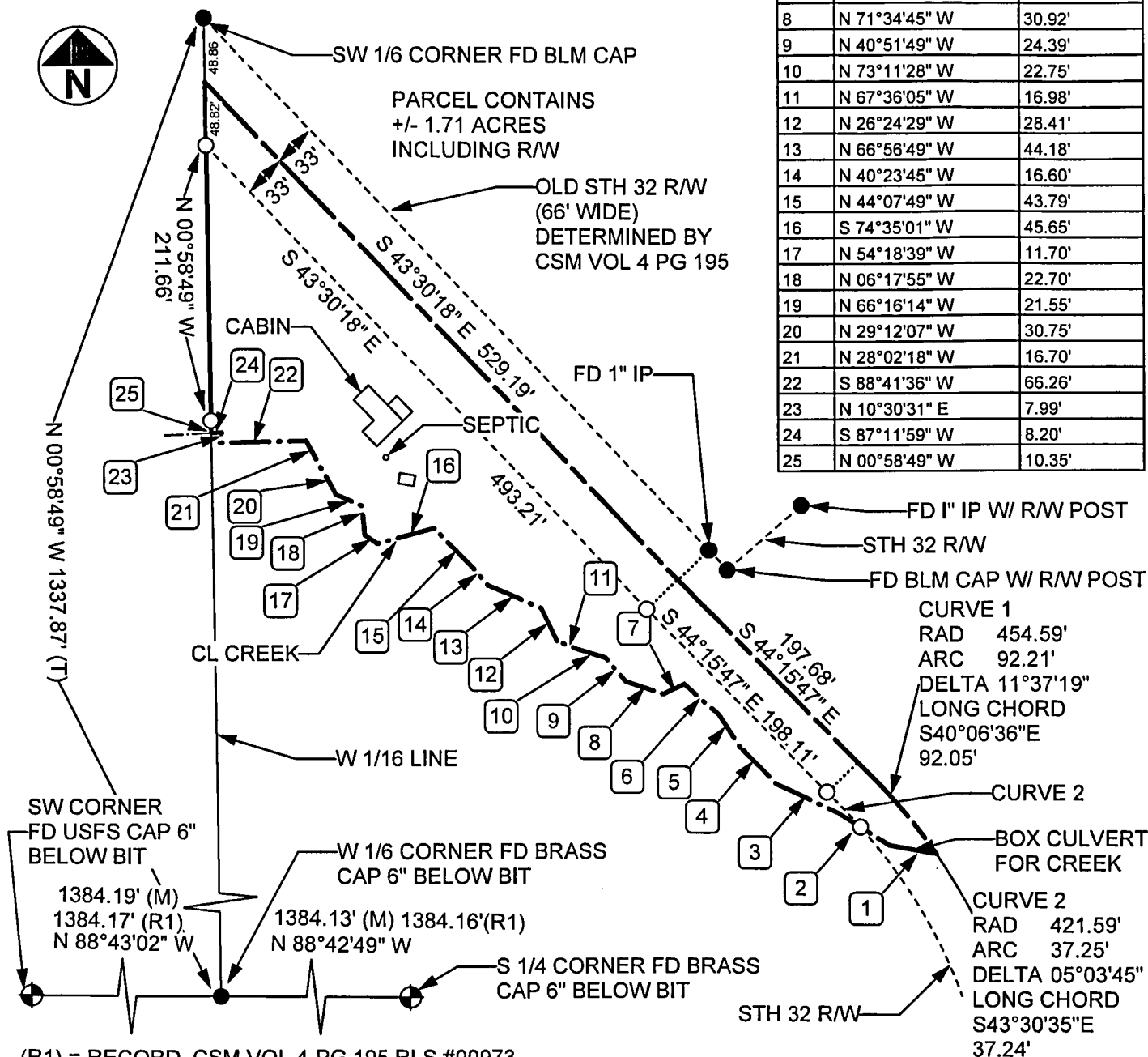


# PLAT OF SURVEY

PART OF THE SE 1/4 OF THE SW 1/4  
SECTION 28, T34N, R15E,  
TOWN OF WABENO, FOREST COUNTY, WISCONSIN

ID	BEARING	DISTANCE
1	N 79°48'21" W	36.06'
2	N 57°20'32" W	47.01'
3	N 64°58'52" W	51.76'
4	N 44°12'56" W	40.03'
5	N 32°52'57" W	30.46'
6	N 48°22'48" W	35.20'
7	S 63°02'58" W	17.22'
8	N 71°34'45" W	30.92'
9	N 40°51'49" W	24.39'
10	N 73°11'28" W	22.75'
11	N 67°36'05" W	16.98'
12	N 26°24'29" W	28.41'
13	N 66°56'49" W	44.18'
14	N 40°23'45" W	16.60'
15	N 44°07'49" W	43.79'
16	S 74°35'01" W	45.65'
17	N 54°18'39" W	11.70'
18	N 06°17'55" W	22.70'
19	N 66°16'14" W	21.55'
20	N 29°12'07" W	30.75'
21	N 28°02'18" W	16.70'
22	S 88°41'36" W	66.26'
23	N 10°30'31" E	7.99'
24	S 87°11'59" W	8.20'
25	N 00°58'49" W	10.35'



(R1) = RECORD, CSM VOL 4-PG 195 RLS #00973

STH 32 R/W DETERMINED FROM WDOT PLANS 9131-01-21 T042-1(12)

I HEREBY CERTIFY ON BEHALF OF MOUNTAIN ENGINEERING, INC. THAT SAID SURVEY AND THE ABOVE MAP WERE MADE IN ACCORDANCE WITH THE ACCEPTABLE PROFESSIONAL STANDARDS IN ACCORDANCE WITH APPLICABLE SECTIONS OF CHAPTER AE7 OF WISCONSIN ADMINISTRATION CODE AND THAT THE INFORMATION CONTAINED THEREON IS, TO THE BEST OF MY KNOWLEDGE, INFORMATION AND BELIEF, A TRUE AND ACCURATE REPRESENTATION THEREOF.

*Zachary J. Stevens*  
ZACHARY J. STEVENS, RLS 2467-008

## LEGEND:

- GOVERNMENT CORNER
- SET 1" PIPE WITH SURVEY CAP
- FOUND CORNER AS NOTED
- (M) = MEASURED THIS SURVEY
- (T) = TOTAL DISTANCE
- FD = FOUND
- IP = IRON PIPE

## MOUNTAIN ENGINEERING, INC. AND SURVEYING

N2960 North US Hwy. 2  
Iron Mountain, Michigan 49801  
Phone 906-779-5762 Fax 906-779-5789  
Email mtnengineering@chartermi.net

## PREPARED FOR:

FOREST COUNTY POTAWATOMI  
PO BOX 340  
CRANDON, WI 54520

DATE:  
AUGUST 07, 2013

BEARING BASIS:  
GPS GRID AZIMUTH

JOB NAME:  
FCP 28-34-15 OLD 32

PAGE 1 OF 1

THE OWNER AGREES TO INDEMNIFY AND HOLD MOUNTAIN ENGINEERING, INC. HARMLESS FROM ANY DAMAGE, LIABILITY OR COST, INCLUDING ATTORNEY'S FEES AND COST OF DEFENSE ARISING FROM ANY CHANGES OR ALTERATIONS MADE BY ANYONE OTHER THAN MOUNTAIN ENGINEERING, INC., OR FROM ANY REUSE OF THE DRAWINGS AND DATA WITHOUT THE PRIOR WRITTEN CONSENT OF MOUNTAIN ENGINEERING, INC.