

Stock No. 26273

COUNTY CLERK

FOREST CO SURVEYOR

FILE # 34522-1982

DATE \_\_\_\_\_ BY \_\_\_\_\_

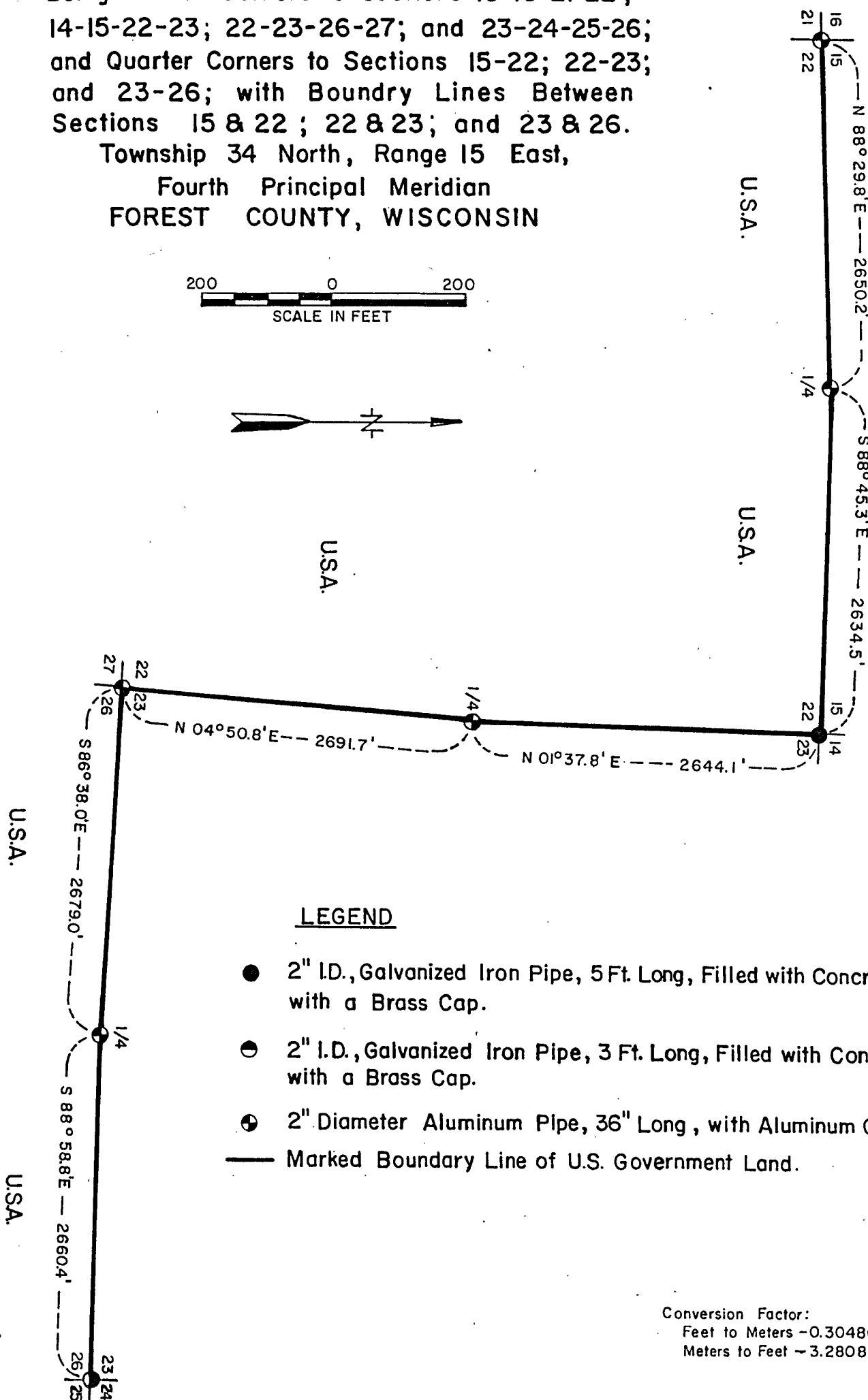
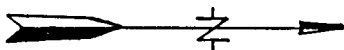
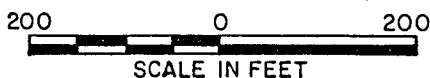
Sheet 1 of 4

**CERTIFIED LAND CORNER RESTORATION**

Being Section Corners to Sections 15-16-21-22 ;  
14-15-22-23; 22-23-26-27; and 23-24-25-26;  
and Quarter Corners to Sections 15-22; 22-23;  
and 23-26; with Boundry Lines Between  
Sections 15 & 22 ; 22 & 23; and 23 & 26.

Township 34 North, Range 15 East,

Fourth Principal Meridian  
FOREST COUNTY, WISCONSIN



Stock No. 26273

Sheet 2 of 4

SURVEY NOTES

This survey was made by the U. S. Department of Agriculture, Forest Service, for the purpose of restoring and establishing corners on the perimeter of Sections 22 and 23, for establishing subdivisional corners within Sections 22 and 23, and for locating and marking the boundaries of U. S. Government lands on their perimeter and within Sections 22 and 23, Township 34 North, Range 15 East, Fourth Principal Meridian, Forest County, Wisconsin.

The U. S. Government lands in this section were acquired from 1944 to 1951.

The original government subdivision survey of this township was made in 1857.

The corner positions recovered, restored, and established by this survey are marked by the monument described in the map legend.

The corner positions established were located to an accuracy of one part in 3000.

The bearings between corner positions are true bearings as determined by solar observations.

The field notes of this survey and a copy of this plat are on file in the Forest Supervisor's Office at Rhineland, Wisconsin.

CORNERS RECOVERED AND RESTORED1. Section Corner to Sections 23, 24, 25, and 26, T.34N., R.15E.

Corner position found marked by 2" x 36" galvanized iron pipe filled with concrete with brass cap, set in 1975 by Jean Resvick. Certificate is filed.

Corner References:

Maple	15"	N.69°E.	31.44 feet
Hemlock	11"	N.18°W.	42.50 feet
Steel Sign Post		North	0.75 feet

2. Section Corner to Sections 22, 23, 26, and 27, T.34N., R.15E.

Corner position restored from found stone placed in corner position by J. J. Melindy; also, remains of original bearing trees.

Corner References:

Sugar Maple	8"	N.14°E.	23.62 feet
Sugar Maple	13"	S.73°E.	21.00 feet
Sugar Maple	6"	S.25°W.	47.78 feet
Sugar Maple	9"	N.57°W.	16.89 feet
Steel Sign Post		East	1.90 feet

Stock No. 26273

Sheet 3 of 4

3. Section Corner to Sections 14, 15, 22, and 23, T.34N., R.15E.

Corner position found marked by a 2" x 60" galvanized iron pipe filled with concrete with a brass cap, set in 1966 by Jean Resvick. Certificate is filed.

Corner References:

Elm	4"	S.14°E.	13.08 feet
Elm	4"	N.43°W.	20.02 feet
Hemlock	12"	N.61°E.	18.88 feet

4. Section Corner to Sections 15, 16, 21, and 22, T.34N., R.15E.

Corner position restored by double proportionate measurement from  $\frac{1}{2}$  mile north, 1 mile south,  $\frac{1}{2}$  mile east, and  $\frac{1}{2}$  mile west.

Corner References:

Sugar Maple	7"	N.30°E.	17.56 feet
Basswood	18"	S.24°W.	23.78 feet
Yellow Birch	12"	S.57°W.	13.44 feet
Sugar Maple	7"	N.23°W.	24.05 feet
Steel Sign Post		East	1.60 feet

5. Quarter Corner to Sections 23 and 26, T.34N., R.15E.

Corner position restored from found scribed wood post with stumps of original bearing trees and location poster.

Corner References:

Sugar Maple	7"	N.2°E.	17.22 feet
Hemlock	15"	S.9°E.	16.11 feet
Sugar Maple	5"	S.62°W.	13.99 feet
Steel Sign Post		East	2.20 feet

6. Quarter Corner to Sections 22 and 23, T.34N., R.15E.

Corner position restored from found bearing tree stump remains and supported by 3 notch beaver blaze on 8" Hemlock; also, blaze on fallen 12" Hemlock.

Corner References:

Hemlock	12"	S.53°E.	38.28 feet
Yellow Birch	9"	S.59°W.	24.21 feet
Sugar Maple	8"	N.26°W.	12.02 feet
Steel Sign Post		North	1.50 feet

7. Quarter Corner to Sections 15 and 22, T.34N., R.15E.

Corner position found marked by 2" iron pipe 16" above ground. Location poster nearly grown over on northwest side of 22" Sugar Maple, which also has D.B.H. and stump blaze. Found stump holes from bearing trees made by N. A. Smith in 1909; also, Connor Forest Industries used corner for previous survey.

Corner References:

Sugar Maple	6"	N.54°E.	23.23 feet
Sugar Maple	10"	S.76°E.	27.50 feet
Sugar Maple	16"	S.60°W.	15.09 feet
Steel Sign Post		West	2.20 feet

Stock No. 26273

Sheet 4 of 4

SURVEYOR'S AFFIDAVIT

State of Wisconsin ]  
County of Forest ] SS

I, Milo E. Stefan, Cadastral Surveyor, U. S. Forest Service, and a registered surveyor in the State of Wisconsin, hereby certify that I have surveyed and subdivided Sections 22 and 23, Township 34 North, Range 15 East, Fourth Principal Meridian, State of Wisconsin.

The plat map and the notes herewith are a correct representation of the land surveyed and divided. I have surveyed and subdivided said section in accordance with the rules for survey of the public lands and with the statutes of the State of Wisconsin.

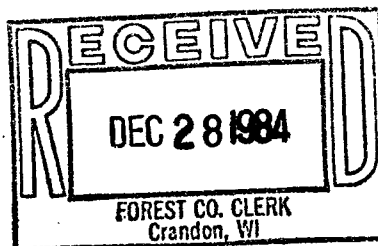


Date of Survey: 1982

*Milo E. Stefan*  
Cadastral Surveyor, U. S. Forest Service  
R.L.S., State of Wisconsin  
Certificate S-1558

Plat Ready For Filing: *Dale S. Stacey*

District Ranger



*Dale L. Deer*  
Deputy Co. Clerk