

DATE \_\_\_\_\_ BY \_\_\_\_\_

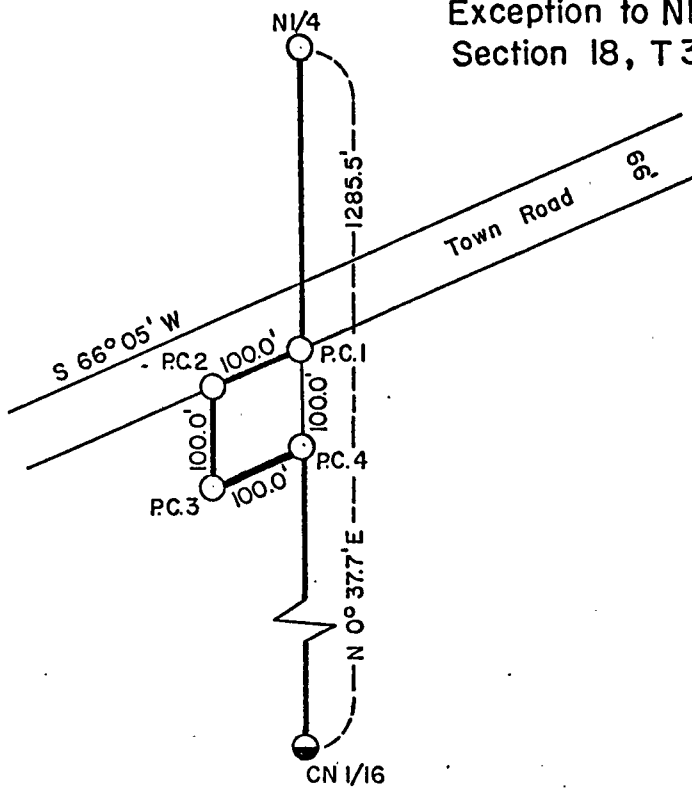
**Meters to Feet – 3.28033:**

Stock No. 26273

SHEET 2 of 8

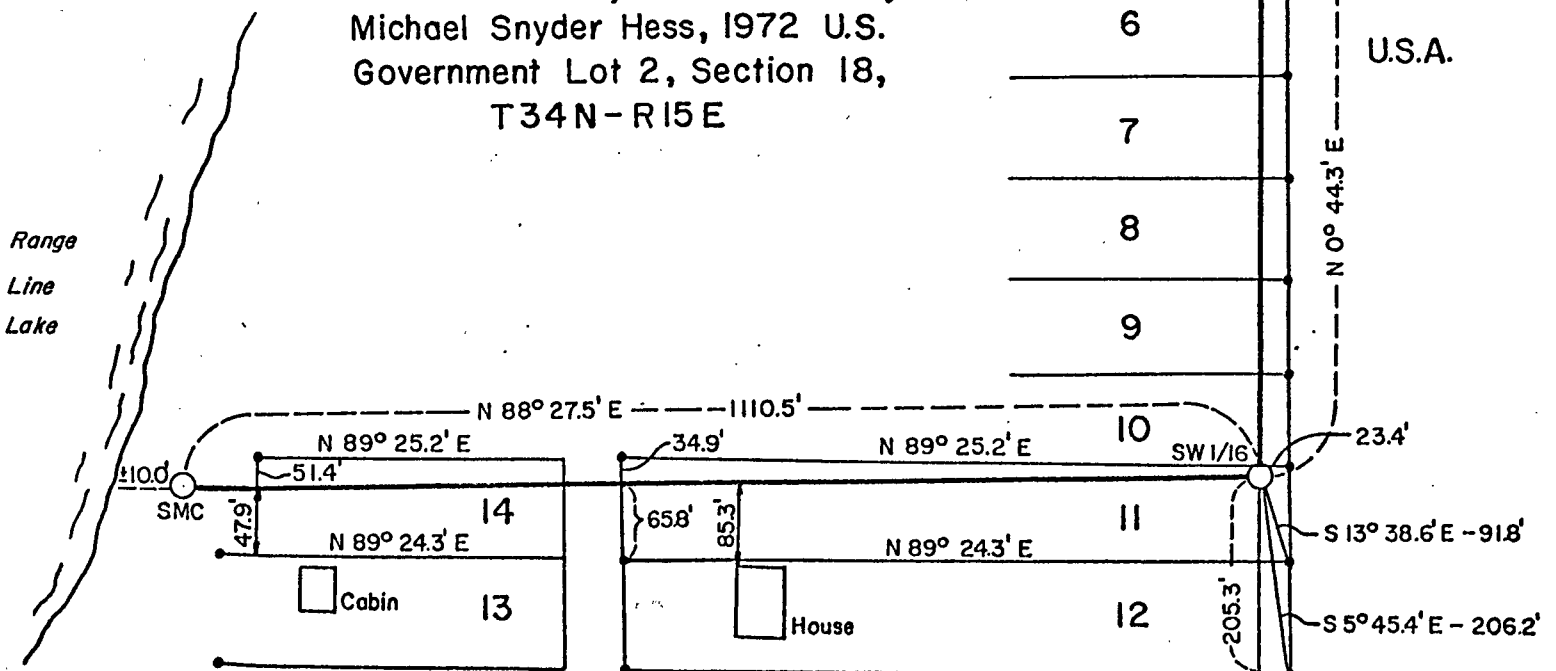
### DETAIL 1

Exception to NE 1/4 NW 1/4  
Section 18, T 34 N - R 15 E



### DETAIL 2

Certified Surveys of Record By  
Michael Snyder Hess, 1972 U.S.  
Government Lot 2, Section 18,  
T 34 N - R 15 E



Stock No. 26273

Sheet 3 of 8

SURVEY NOTES

This survey was made by the U.S. Department of Agriculture, Forest Service, for the purpose of restoring and establishing corners on the perimeter of Section 18, for establishing subdivisional corners within Section 18, and for locating and marking the boundaries of U.S. Government land on the perimeter and within Section 18, Township 34 North, Range 15 East, Fourth Principal Meridian, Forest County, Wisconsin.

The U.S. Government lands in this section were acquired in 1935.

The original government subdivision survey of this township was made in 1859. Subsequent surveys by Nathan Smith in 1907, 1908 and 1909 were used to support this survey.

The corner positions recovered, restored and established by this survey are marked by the monument described in the map legend.

The corner positions established were located to an accuracy of one part in 3000.

The bearings between corner positions are true bearings as determined by solar observations.

The field notes of this survey and a copy of this plat are on file in the Forest Supervisor's Office at Rhinelander, Wisconsin.

CORNERS RECOVERED AND RESTORED1. Section Corner to Sections 7-8-17-18, T.34N., R.15E.

Corner position found marked by a Forest County aluminum monument, certificate filed, document number 112924.

Corner references:

1" Iron Pipe	N.18°-50'W.	15.93 feet
1" Iron Pipe	S.14°-36'-20"W.	25.72 feet
1" Iron Pipe	S.89°-51'-20"E.	10.30 feet
Basswood 10"	N.56°E.	32.85 feet
Sugar Maple 8"	S.68°E.	38.73 feet
Yellow Birch 10"	S.14°W.	26.11 feet
Yellow Birch 8"	N.18°W.	16.78 feet
Steel sign post	East	1.6 feet

2. Section Corner to Sections 7-18-12-13, T.34N., R.14-15E.

Corner position found marked by an iron pipe below road surface, at road intersection.

Corner references:

Basswood 10"	N.71°E.	86.73 feet
Butternut 12"	S.15°E.	140.74 feet
Sugar maple 8"	S.57°W.	113.00 feet
Sugar maple 4"	N.13°W.	159.25 feet
Steel sign post	S.12°E.	17.3 feet

Stock No. 26273

Sheet 4 of 8

3. Section Corner to Sections 13-18-19-24, T.34N., R.14-15E.  
 Corner position restored from evidence of original bearing trees and from surveys of Nathan Smith in 1907, 1908 and 1909.  
 Corner references:

Sugar maple 12"	N.58°E.	34.86 feet
Sugar maple 6"	S.87°E.	76.45 feet
Sugar maple 12"	S.21°W.	23.17 feet
Sugar maple 4"	N.20°W.	40.47 feet
Steel sign post	South	20.9 feet

4. Section Corner to Sections 17-18-19-20, T.34N., R.15E.  
 Corner position restored by double proportionate measurement from quarter corners one half mile north and east, one mile west and two miles southerly.  
 Corner references:

Sugar maple 5"	N.89°E.	47.07 feet
Yellow birch 5"	S.40°E.	31.38 feet
Hickory 8"	West	95.90 feet
Sugar maple 5"	N.28°W.	50.90 feet
Steel sign post	West	16.6 feet

5. Quarter Corner to Sections 17-18, T.34N., R.15E.  
 Corner position restored from subsequent survey remains by Nathan Smith in 1917, Mound of stone and remains of a new bearing tree. Fences north, south, east and west.  
 Corner references:

Black ash 12"	S.12°E.	25.28 feet
Black ash 13"	S.40°W.	46.70 feet
Yellow birch 9"	N.10°W.	27.11 feet
Steel sign post	Southeast	1.2 feet

6. Quarter Corner to Sections 7-18, T.34N., R.15E.  
 Corner position found marked by a fence corner. Position is supported by bearing and distances to section corner as recorded in the Town of Wabeno plat dating back to 1890's.  
 Corner references:

Sugar maple 6"	N.18°E.	21.62 feet
Sugar maple 8"	S.34°W.	21.15 feet
Steel sign post	Southwest	1.0 feet

7. Quarter Corner to Sections 18-19, T.34N., R.15E.  
 Corner position restored by single proportionate measurement between the southeast and southwest section corners to Section 18.  
 Corner references:

White oak 8"	N.25°E.	6.64 feet
White oak 8"	S.69°E.	25.42 feet
White oak 8"	N.83°W.	15.81 feet
Steel sign post	Northwest	1.0 feet

8. Quarter Corner to Sections 13-18, T.34N., R.14-15E.  
 Corner position falls in Range Line Lake. Subsequent surveys by Nathan Smith established this corner on the ice in 1907 and 1908. At this time evidence of both meander corners were present. He recognized the called distance between the MC's as short, by 6.27 chains. By proportionate distance he positioned this corner on the ice. I therefore, accept Smith's surveys and proportioned out his errors and positioned the corner on line and 2313.1 feet north of the southwest section corner to Section 18.

Stock No. 26273

Sheet 5 of 8

- 8a. We placed a witness corner on the north shore of Range Line Lake 557.3 feet north of  $\frac{1}{4}$  corner.  
Corner references:

Cedar 9"	N.21°E.	19.18 feet
Cedar 8"	S.83°W.	31.86 feet
Black ash 3"	N. 5°W.	47.09 feet
Steel sign post	North	6.5 feet

- 8b. We placed a witness corner on the south shore of Range Line Lake 1789.0 feet south of  $\frac{1}{4}$  corner.  
Corner references:

Black ash 5"	N.58°E.	28.26 feet
Black ash 7"	S.60°E.	15.81 feet
Black ash 8"	S.39°W.	21.71 feet
Steel sign post	Northeast	2.0 feet

9. West Sixteenth Corner to Sections 7-18.

Corner position found located by a fence corner, fence east, west and north. Position is in accordance with bearings and distances to section corner westerly and quarter corner easterly.

Corner references:

Red pine 5"	N.43°E.	58.95 feet
Sugar maple 8"	S.36°E.	53.99 feet
Steel sign post	South	1.0 feet

CORNERS ESTABLISHED

1. Center Quarter Corner.

Corner position established at the intersection of straight lines between opposing quarter corners on the perimeter of Section 18.

Corner references:

Sugar maple 10"	S.88°E.	24.47 feet
Basswood 10"	S.49°W.	29.03 feet
Sugar maple 12"	N.53°W.	48.74 feet
Steel sign post	North	3.6 feet

2. North Sixteenth Corner to Sections 13-18.

Corner position established on line and midpoint between the west quarter corner and northwest section corner to Section 18.

Corner references:

Sugar maple 15"	N.40°E.	51.17 feet
White ash 10"	S.39°E.	26.23 feet
Sugar maple 24"	S.81°W.	15.61 feet
Steel sign post	South	1.0 feet
1" Iron pipe	N.27°E.	52.25 feet

3. North Sixteenth Corner to Section 17-18.

Corner position established on line and midpoint between the east quarter corner and northeast section corner to Section 18.

Corner references:

White ash 6"	N.78°E.	19.63 feet
White ash 5"	S.41°E.	48.36 feet
Basswood 9"	S.86°W.	7.39 feet
Steel sign post	South	2.1 feet

Stock No. 26273

County Clerk.

Sheet 6 of 8

4. Center North Sixteenth Corner.

Corner position established on line and midpoint between the center quarter and north quarter corners.

Corner references:

Black ash 4"	N.70°E.	21.59 feet
Black ash 6"	S.53°E.	43.29 feet
Black ash 12"	S.24°W.	13.87 feet
Steel sign post	West	2.3 feet

5. Center West Sixteenth Corner.

Corner position established on line and midpoint between the center quarter and west quarter corners.

Corner references:

Sugar maple 5"	N.75°E.	43.27 feet
Sugar maple 8"	S.40°E.	50.99 feet
Sugar maple 14"	N.61°W.	53.19 feet
Steel sign post	South	42.7 feet
Steel sign post	West	46.5 feet
2" iron pipe	S.15½°E.	96.5 feet

6. Center East Sixteenth Corner.

Corner position established on line and midpoint between the center quarter and east quarter corner.

Corner references:

Red oak 10"	N.55°E.	46.18 feet
Red oak 5"	S.36°W.	69.67 feet
Hemlock 12"	N.39°W.	79.18 feet
Steel sign post	West	1.6 feet
1½" iron pipe	N.01°W.	66.53 feet

7. Northwest Sixteenth Corner.

Corner position established at the intersection of the north and west sixteenth lines.

Corner references:

Cedar 10"	N.80°E.	81.33 feet
Aspen 9"	S.36°E.	64.75 feet
Aspen 6"	N.89°W.	85.27 feet
Steel sign post	West	3.7 feet

8. Southwest Sixteenth Corner.

Corner position established at the intersection of the west and south sixteenth lines.

Corner references:

Sugar maple 7"	N. 9°E.	33.72 feet
Sugar maple 7"	S.64°E.	34.66 feet
Sugar maple 7"	S.56°W.	14.65 feet
Steel sign post	North	2.40 feet
2" iron pipe	S.5°45.4'E.	206.20 feet

9. Center South North Sixty-Fourth Corner.

Corner position established on line and midpoint between the center quarter and center north sixteenth corners.

Corner references:

Sugar maple 5"	N.60°E.	29.16 feet
Sugar maple 8"	S.30°E.	28.03 feet
Basswood 8"	S.74°W.	44.17 feet
Steel sign post	West	1.6 feet

Stock No. 26273

Sheet 7 of 8

10. Center South Northwest Sixtyfourth Corner.

Corner position established on line and midpoint between the center west sixteenth and northwest sixteenth corners.

Corner references:

Cedar 9"	S.76°W.	25.81 feet
Cedar 6"	N.39°W.	76.09 feet
Steel sign post	North	8.8 feet

11. Special Meander Corner 1.

Corner position established on the east-west quarter line 636.4 feet west of the center west sixteenth corner on the east shore on Range Line Lake.

Corner references:

Black ash 4"	East	95.56 feet
Red maple 5"	S.61°E.	45.96 feet
Steel sign post	East	0.8 feet

12. Special Meander Corner 2.

Corner position established on the south sixteenth line 1110.50 feet west of the southwest sixteenth corner on the east shore of Range Line Lake.

Corner references:

White oak 9"	N.84°E.	44.07 feet
Black ash 3"	S.30°W.	19.81 feet
Steel sign post	East	3.7 feet

-Large Boulder - .5 feet south of monument.

13. Property Corner #1.

Corner position established 297.25 feet southerly along the north-south quarter line from the north quarter corner to Section 18, as called for in the deed exception to the northeast quarter to the northwest quarter to Section 18.

Corner references:

Red pine 4"	N. 6°E.	69.24 feet
Red oak 7"	N.48°W.	71.73 feet
Steel sign post	North	1.3 feet

14. Property Corner #2.

Corner position established south 66 degrees, 05 minutes west, a distance of 100.00 feet from property corner #1.

Corner references:

Sugar maple 10"	N.16°W.	71.01 feet
Basswood 6"	S.37°W.	32.69 feet
Steel sign post	Northeast	2.0 feet

15. Property Corner #3.

Corner position established southerly 100.00 feet, parallel to the north-south quarter line from property corner #2.

Corner references:

Black ash 9"	S. 3°W.	35.25 feet
Cedar 4"	N.84°W.	16.68 feet
Steel sign post	North	2.2 feet

Stock No. 26273

Sheet 8 of 8

16. Property Corner #4.

Corner position established 397.25 feet southerly along the north-south quarter line from the north quarter corner to Section 18.

Corner references:

Black ash 6"	S.39°W.	85.34 feet
Black ash 3"	N.71°W.	35.28 feet

SURVEYOR'S AFFIDAVIT

State of Wisconsin ]  
County of Forest ] SS

I, Milo E. Stefan, Cadastral Surveyor, U.S. Forest Service and a registered surveyor in the State of Wisconsin, hereby certify that I have surveyed and subdivided Section 18, Township 34 North, Ranger 15 East, Fourth Principal Meridian, State of Wisconsin.

The plat map and the notes herewith are a correct representation of the land surveyed and divided. I have surveyed and subdivided said section in accordance with the rules for survey of the public lands and with the statutes of the State of Wisconsin.

*Milo E. Stefan*

Cadastral Surveyor, U.S. Forest Service  
R.L.S. State of Wisconsin  
Certificate S-1558.

Date of Survey: 1981

