

Stock No. 26273

FOREST CO SURVEYOR

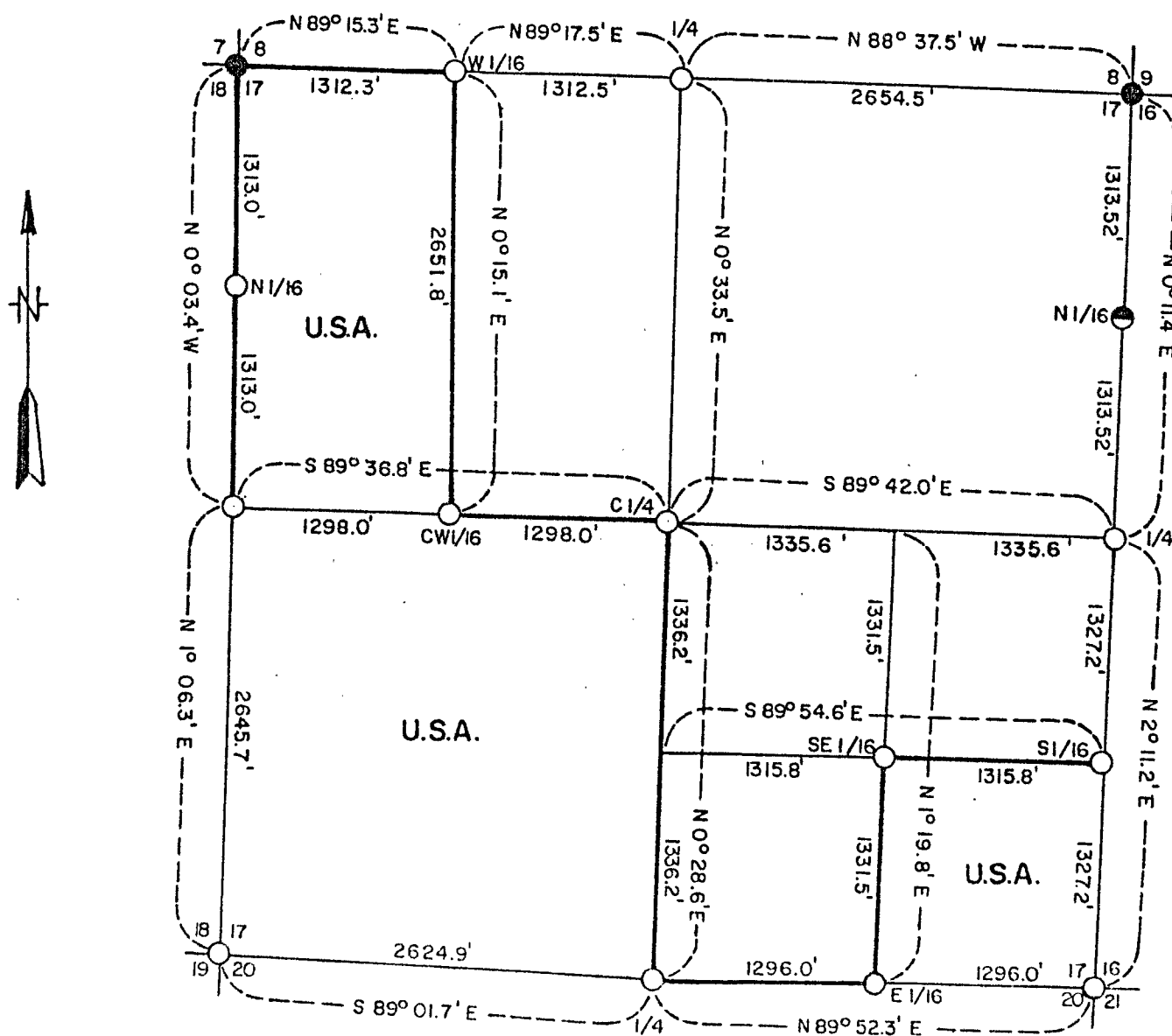
FILE # 34517-1981

DATE \_\_\_\_\_ BY \_\_\_\_\_

SHEET 1 of 5

# PLAT OF SURVEY U.S. GOVERNMENT LAND

Being the SW1/4, W1/2 NW1/4 and SE1/4 SE1/4 Section 17  
Township 34 North, Range 15 East, Fourth Principal Meridian  
FOREST COUNTY, WISCONSIN



## LEGEND

- Forest County Survey Monument.
- 2" Diameter, Aluminum Monument, 30" Long with Aluminum Cap.
- ⊙ 2" Diameter, Aluminum Monument, 120" Long with Aluminum Cap.
- Marked Boundary Line of U.S. Government Lands.

Conversion Factors:

Feet to Meters 0.304801

Meters to Feet 3.280833

Stock No. 26273

Sheet 2 of 5

SURVEY NOTES

This survey was made by the U.S. Department of Agriculture, Forest Service, for the purpose of restoring and establishing corners on the perimeter of Section 17, for establishing subdivisional corners within Section 17, and for locating and marking the boundaries of U.S. Government land on the perimeter and within Section 17, Township 34 North, Range 15 East, Fourth Principal Meridian, Forest County, Wisconsin.

The U.S. Government lands in this section were acquired from 1934 to 1937.

The original government subdivision survey of this township was made in 1859. Subsequent surveys to plat the town of Wabeno and by N.H. Smith in 1905, 1917, and 1920 in the surveys of Section 17 were used in this section sub-division.

The corner positions recovered, restored and established by this survey are marked by the monument described in the map legend.

The corner positions established were located to an accuracy of one part in 3000.

The bearings between corner positions are true bearings as determined by solar observations.

The field notes of this survey and a copy of this plat are on file in the Forest Supervisor's Office at Rhinelander, Wisconsin.

CORNERS RECOVERED AND RESTORED1. Section Corner to Sections 7-8-17-18, T.34N., R.15E.

Corner position found marked by a Forest County monument, certificate filed, Document Number 112924.

Corner references:

1" Iron pipe	N.18°-50'W.	15.93 feet
1" Irons	S.14°-36'-20"W.	25.72 feet
1" Irons	S.89°-51'-20"E.	10.30 feet
Basswood 10"	N.56°E.	32.85 feet
Sugar maple 8"	S.68°E.	38.73 feet
Yellow birch 10"	S.14°W.	26.11 feet
Yellow birch 8"	N.18°W.	16.78 feet
Steel sign post	East	1.6 feet

2. Section Corner to Sections 8-9-16-17, T.34N., R.15E.

Corner position found marked by a Forest County monument, certificate filed, Document Number 109757.

Corner references:

Iron rod	S.88°W.	45 feet
Iron rod	N.41°E.	20 feet
Black Cherry 7"	N.82°E.	85.46 feet
Sugar Maple 5"	S.28°E.	23.93 feet
Basswood 5"	N.68°W.	62.41 feet
Steel sign post	East	0.8 feet

Stock No. 26273

Sheet 3 of 5

3. Section Corner to Sections 16-17-20-21, T.34N., R.15E.

Corner position restored by proportionate measure from section corner two miles southerly, one half mile northerly and from the center line of Chicago Northwestern Railway right-of-way plat, dated 1916, 274 feet westerly.

Corner references:

Sugar maple 6"	N.77°E.	82.12 feet
Black cherry 6"	S.30°E.	85.28 feet
Sugar maple 6"	S.72°W.	260.72 feet
Sugar maple 20"	N.48°W.	266.09 feet
Steel sign post	East	3.3 feet
Steel sign post	North	2.0 feet

4. Section Corner to Sections 17-18-19-20, T.34N., R.15E.

Corner position restored by double proportionate measurement from quarter corners one half mile north and east, one mile west and two miles southerly.

Corner references:

Sugar maple 5"	N.89°E.	47.07 feet
Yellow birch 5"	S.40°E.	31.38 feet
Hickory 8"	West	95.90 feet
Sugar maple 5"	N.28°W.	50.90 feet
Steel sign post	West	16.6 feet

5. Quarter Corner to Sections 17-18, T.34N., R.15E.

Corner position restored from subsequent survey remains by Nathan Smith in 1917, mound of stone and remains of a new bearing tree. Fences north, east, south and west.

Corner references:

Black ash 12"	S.12°E.	25.28 feet
Black ash 13"	S.40°W.	46.70 feet
Yellow birch 9"	N.10°W.	27.11 feet
Steel sign post	Southeast	1.2 feet

6. Quarter Corner to Sections 8-17, T.34N., R.15E.

Corner position found marked by an iron pipe which conforms to the town plat of Wabeno.

Corner references:

Sugar maple 11"	N.15°E.	29.19 feet
Sugar maple 26"	S. 2°W.	26.08 feet
Sugar maple 6"	S.72°W.	21.84 feet
Steel sign post	Southeast	1.4 feet

7. Quarter Corner to Sections 17-20, T.34N., R.15E.

Corner position found marked by an iron pipe in mound of stone supported by evidence of the original bearing trees.

Corner references:

Basswood 8"	S.25°E.	53.05 feet
Hemlock 18"	S.89°W.	24.01 feet
Sugar maple 14"	N.23°W.	49.98 feet
Steel sign post	North	1.9 feet

Stock No. 26273

Sheet 4 of 5

8. Quarter Corner to Sections 16-17, T.34N., R.15E.

Corner position restored from past surveys by Nathan Smith and calls to railway center line easterly. Fence line westerly conforms to past use.

Corner references:

Red maple 6"	N.73°E.	58.46 feet
Balsam fir 8"	S.56°E.	73.37 feet
Power pole #3415-17E7	S.85°W.	27.22 feet

9. Center Quarter Corner.

Corner position found marked by an iron pipe in mound of stone with scribed cedar post along side. Set by Smith in 1917 survey of section sub-division.

Corner references:

Sugar maple 9"	N.56°E.	45.51 feet
Sugar maple 9"	S.30°E.	12.96 feet
Sugar maple 12"	S.28°W.	44.25 feet
Steel sign post	South	10.4 feet

10. North Sixteenth Corner to Sections 16-17.

Corner position found marked by an iron pipe.

Corner references:

Tamarack 9"	N.84°E.	41.80 feet
Tamarack 8"	S. 8°W.	10.01 feet
Tamarack 11"	N.32°W.	9.96 feet
Steel sign post	North	2.6 feet

11. West Sixteenth Corner to Sections 8-17.

Corner position found marked by an iron pipe in mound of stone with fences east and south.

Corner references:

White ash 10"	N.13°E.	57.88 feet
Red maple 6"	S.33°W.	24.66 feet
Yellow birch 6"	S.79°W.	62.77 feet
Steel sign post	West	5.33 feet

CORNERS ESTABLISHED1. North Sixteenth Corner to Sections 17-18.

Corner position established on line and midpoint between the north-west section corner and the west quarter corner to Section 17.

Corner references:

White ash 6"	N.78°E.	19.63 feet
White ash 5"	S.41°E.	48.36 feet
Basswood 9"	S.86°W.	7.39 feet
Steel sign post	South	2.1 feet

2. Center West Sixteenth Corner.

Corner position established on line and midpoint between the west and center quarter corners to Section 17.

Corner references:

Sugar maple 6"	S.70°E.	16.08 feet
Sugar maple 12"	S. 2°W.	48.37 feet
Sugar maple 15"	N.72°W.	40.97 feet
Steel sign post	North	11.7 feet

Stock No. 26273

Sheet 5 of 5

3. Southeast Sixteenth Corner.

Corner position established at the intersection of the south and east sixteenth lines to Section 17.

Corner references:

Basswood 12"	N. 79° E.	24.31 feet
Sugar maple 10"	S. 22° E.	35.84 feet
Hemlock 14"	S. 51° W.	13.02 feet
Steel sign post	East	3.0 feet

4. South Sixteenth Corner to Sections 16-17.

Corner position established on line and midpoint between the east quarter corner and southeast section corner to Section 17.

Corner references:

Tamarack 12"	N. 78° E.	189.92 feet
Power pole #3415-16L6	S. 19° E.	84.41 feet
Steel sign post	South	1.7 feet
Steel sign post	West	2.0 feet

5. East Sixteenth Corner to Sections 17-20.

Corner position established on line and midpoint between the south quarter corner and the southeast section corner to Section 17.

Corner references:

Black ash 5"	N. 7° E.	43.74 feet
Red maple 5"	S. 43° E.	39.89 feet
Black ash 5"	S. 49° W.	7.73 feet
Steel sign post	West	2.1 feet
1 1/4 square steel bar	S. 12° E.	34.9 feet

SURVEYOR'S AFFIDAVIT

State of Wisconsin ]  
County of Forest ] SS

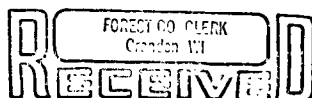
I, Milo E. Stefan, Cadastral Surveyor, U.S. Forest Service and a registered land surveyor in the State of Wisconsin, hereby certify that I have surveyed and subdivided Section 17, Township 34 North, Range 15 East, Fourth Principal Meridian, State of Wisconsin.

The plat map and the notes herewith are a correct representation of the land surveyed and divided. I have surveyed and subdivided said section in accordance with the rules for survey of the public lands and with the statutes of the State of Wisconsin.



*Milo E. Stefan*

Cadastral Surveyor, U.S. Forest Service  
R.L.S. State of Wisconsin  
Certificate S-1558



Date of Survey: 1981

MAR 5 1982

*Dora C. James*