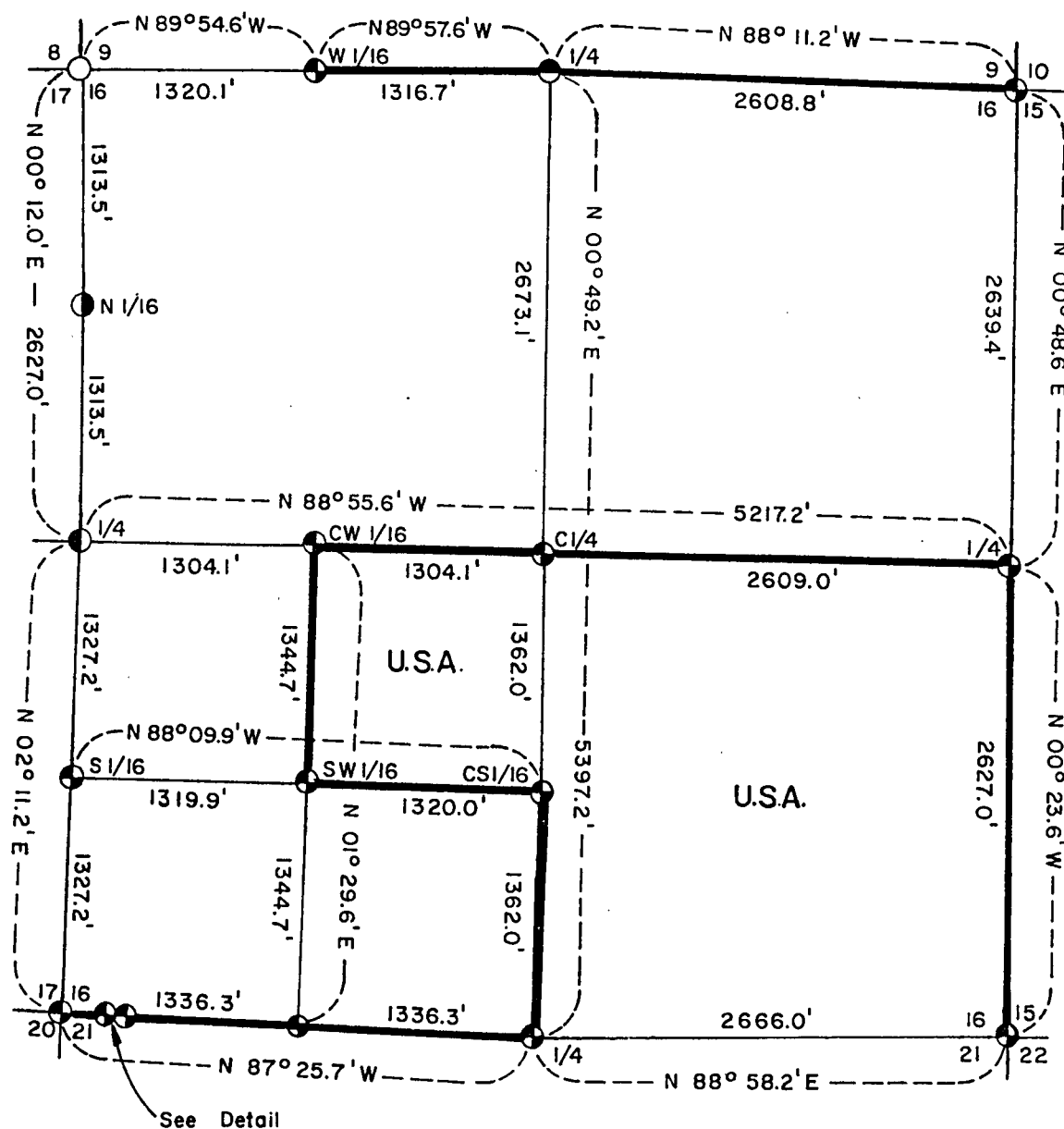
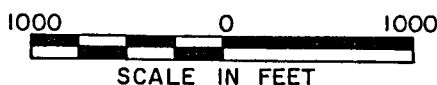


FOREST CO SURVEYOR
FILE # 34516-19861008
DATE _____ BY _____

SHEET 1 OF 7

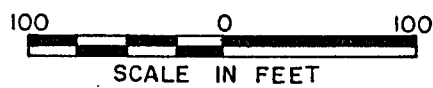
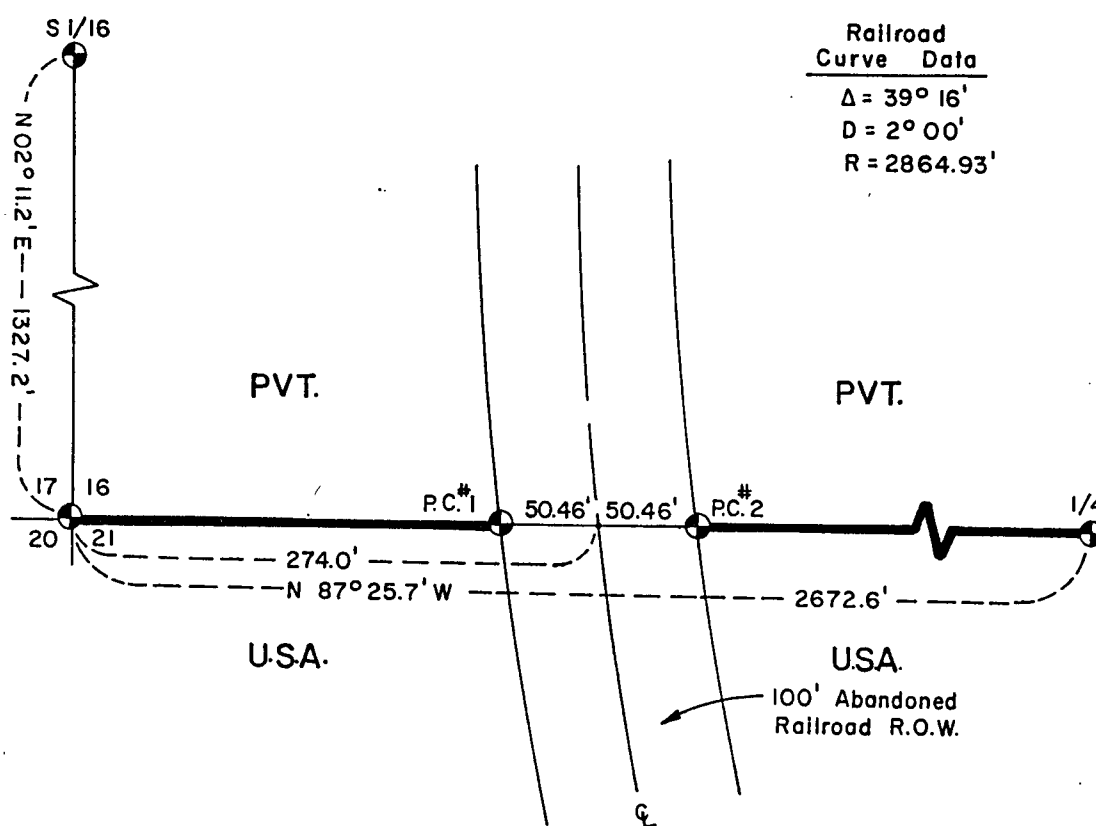
Being the SE 1/4 and NE1/4, SW1/4 of Section 16
Township 34 North, Range 15 East, Fourth Principal Meridian
FOREST COUNTY, WISCONSIN



- 2" Diameter Aluminum Monument, 120" Long.
- Forest County Monument
- 2" Diameter Aluminum Monument, 36" Long.
- 2" Diameter Aluminum Monument, 30" Long.
- 2" Diameter Aluminum Monument, 60" Long.
- Marked Boundary Lines of U.S. Government Lands.

Conversion Factors:
 Feet to Meters-0.304801
 Meters to Feet - 3.280833

SHEET 2 OF 7



Stock No. 26273

Sheet 3 of 7

SURVEY NOTES

This survey was made by the U. S. Department of Agriculture, Forest Service, for the purpose of restoring and establishing corners on the perimeter of Section 16, for establishing subdivisional corners within Section 16, and for locating and marking the boundaries of U. S. Government lands on their perimeter and within Section 16, Township 34 North, Range 15 East, Fourth Principal Meridian, Forest County, Wisconsin.

The U. S. Government lands in this section were acquired in 1934.

The original Government subdivision survey of this township was made in 1859.

The corner positions recovered, restored, and established by this survey are marked by the monument described in the map legend.

The corner positions established were located to an accuracy of one part in 3000.

The bearings between corner positions are true bearings as determined by solar observations.

The field notes of this survey and a copy of this plat are on file in the Forest Supervisor's Office at Rhinelander, Wisconsin.

CORNERS RECOVERED AND RESTORED1. Section Corner to Sections 16-17-20-21, T.34N., R.15E.

Corner position found marked with a 2" x 30" aluminum pipe with aluminum cap. Plat filed with County Clerk, March 5, 1982.

Corner References:

Sugar Maple	6"	N.77°E.	82.12 feet
Black Cherry	6"	S.30°E.	85.28 feet
Sugar Maple	6"	S.72°W.	260.72 feet
Sugar Maple	20"	N.48°W.	266.09 feet
Steel Sign Post		East	3.30 feet
Steel Sign Post		North	2.00 feet

2. Section Corner to Sections 15-16-21-22, T.34N., R.15E.

Corner position restored by double proportionate measure from $\frac{1}{2}$ mile north, east, and west, and 1 mile south.

Corner References:

Sugar Maple	7"	N.30°E.	17.56 feet
Basswood	18"	S.24°W.	23.78 feet
Yellow Birch	12"	S.57°W.	13.44 feet
Sugar Maple	7"	N.23°W.	24.05 feet
Steel Sign Post		East	1.60 feet

3. Section Corner to Sections 9-10-15-16, T.34N., R.15E.

Corner position found marked by 1 $\frac{1}{4}$ " steel rod in mound of stone; also, a Wisconsin Conservation Department location poster on southwest side of Sugar Maple, N.50°E., 5.10 feet.

Corner References:

Sugar Maple	15"	N.44°E.	5.31 feet
Sugar Maple	17"	S.73°E.	37.82 feet
Basswood	10"	S.18°W.	53.25 feet
Sugar Maple	11"	N.40°E.	23.26 feet
Steel Sign Post		West	1.70 feet

Stock No. 26273

Sheet 4 of 7

4. Section Corner to Sections 8-9-16-17, T.34N., R.15E.

Corner position found marked by a standard Forest County monument set April 15, 1976, by Paul Smith, Document Number 109757.

Corner References:

Elm	18"	N.55°40'W.	57.00	feet
Iron Rod		S.88°W.	45.00	feet
Iron Rod		N.41°E.	20.00	feet
Black Cherry	7"	N.82°E.	85.46	feet
Sugar Maple	5"	S.28°E.	23.93	feet
Basswood	5"	N.68°W.	62.41	feet
Steel Sign Post		East	0.80	feet

5. Quarter Corner to Sections 16 and 21, T.34N., R.15E.

Corner position found marked by a 2" iron pipe in a "Y" of woods' road with plantation lines west and north.

Corner References:

Basswood	6"	S.42°W.	56.75	feet
Basswood	10"	N.80°E.	34.39	feet
Sugar Maple	14"	N.23°E.	63.19	feet
Steel Sign Post		West	2.20	feet

6. Quarter Corner to Sections 15 and 16, T.34N., R.15E.

Corner position found marked by old post scribed S-16.

Corner References:

Sugar Maple	14"	N.88°E.	24.75	feet
Sugar Maple	14"	S.76°W.	23.30	feet
Sugar Maple	15"	N.53°W.	29.92	feet
Steel Sign Post		South	1.90	feet

7. Quarter Corner to Sections 9 and 16, T.34N., R.15E.

Corner position marked by an iron pipe and wood post.

Corner References:

Black Ash	5"	S.79°E.	21.30	feet
Cedar	7"	S.11°W.	22.31	feet
Cedar	11"	N.72°W.	20.95	feet
Steel Sign Post		East	1.50	feet

8. Quarter Corner to Sections 16 and 17, T.34N., R.15E.

Corner position restored from past surveys by Nathan Smith and calls to railway centerline easterly. Fence line westerly conforms to past use.

Corner References:

Red Maple	6"	N.73°E.	58.46	feet
Balsam Fir	8"	S.56°E.	73.37	feet
Power Pole #3415-17E7		S.85°W	27.22	feet

Stock No. 26273

Sheet 5 of 7

9. West One-Sixteenth of Sections 9 and 16, T.34N., R.15E.

Corner position found marked by 3/4" iron pipe and squared scribed wood post, which fell within acceptable tolerances for corner position.
Corner References:

Sugar	12"	N.55°E.	31.12	feet
Sugar	9"	S.40°E.	34.56	feet
Sugar	9"	S.66°W.	33.38	feet
Steel Sign Post		East	2.20	feet

10. North One-Sixteenth to Sections 16 and 17, T.34N., R.15E.

Corner position found marked by a 2" x 120" aluminum pipe with an aluminum cap set by Milo Stefan. Corner Certificate filed with County Clerk, May 10, 1982.

Corner References:

Tamarack	9"	N.84°E.	41.80	feet
Tamarack	8"	S.8°W.	10.01	feet
Tamarack	11"	N.32°W.	9.96	feet
Steel Sign Post		North	2.60	feet

CORNERS ESTABLISHED1. Center Quarter to Section 16, T.34N., R.15E.

Corner established at the intersection of the one-quarter lines of Section 16.

Corner References:

Red Maple	4"	N.07°E.	20.97	feet
Hemlock	18"	N.80°E.	54.95	feet
Black Ash	3"	S.55°W.	26.66	feet
Steel Sign Post		East	3.60	feet

2. Center West One-Sixteenth to Section 16, T.34N., R.15E.

Corner established midpoint and on line between the center quarter corner and the west quarter corner of Section 16.

Corner References:

Basswood	14"	N.69°E.	27.62	feet
Sugar Maple	7"	S.10°W.	7.36	feet
Sugar Maple	4"	N.47°W.	35.49	feet
Steel Sign Post		South	2.00	feet

3. Center South One-Sixteenth to Section 16, T.34N., R.15E.

Corner established midpoint and on line between the center quarter corner and the south quarter corner of Section 16.

Corner References:

Sugar Maple	11"	S.48°E.	27.10	feet
Sugar Maple	5"	S.74°W.	22.71	feet
Sugar Maple	8"	N.3°W.	23.70	feet
Steel Sign Post		South	1.70	feet
1½" Iron Pipe		S.62°30'E.	47.90	feet

Stock No. 26273

Sheet 6 of 7

4. Southwest One-Sixteenth to Section 16, T.34N., R.15E.

Corner established at the intersection of the south and west one-sixteenth lines of Section 16.

Corner References:

Sugar Maple	14"	N.45°E.	21.44	feet
Yellow Birch	12"	S.41°E.	22.43	feet
Balsam	5"	S.68°W.	6.55	feet
Steel Sign Post		East	1.60	feet
1½" Iron Pipe		S.69°E.	45.40	feet

5. South One-Sixteenth Corner to Sections 16 and 17, T.34N., R.15E.

Corner position established midpoint and on line between the west quarter and southwest section corners of Section 16.

Corner References:

Tamarack	12"	N.78°E.	189.92	feet
Power Pole #3415-16L6		S.19°E.	84.41	feet
Steel Sign Post		South	1.70	feet
Steel Sign Post		West	2.00	feet

6. West One-Sixteenth to Sections 16 and 21, T.34N., R.15E.

Corner established midpoint and on line between the south quarter and the southwest section corners of Section 16.

Corner References:

White Spruce	10"	S.65°E.	46.17	feet
Sugar Maple	5"	S.74°W.	19.63	feet
Yellow Birch	5"	N.35°W.	28.20	feet
Steel Sign Post		East	1.70	feet

7. Property Corner #1 on South Line of Section 16, T.34N., R.15E.

We established this corner position 50.46 feet westerly along the section line from the centerline of the abandoned railroad track.

Corner References:

Basswood	5"	S.68°W.	46.60	feet
Sugar Maple	12"	N.39°W.	63.74	feet
Steel Sign Post		West	1.20	feet

8. Property Corner #2 on the South Line of Section 16, T.34N., R.15E.

We established this corner position 50.46 feet easterly along the section line from the centerline of the abandoned railroad track.

Corner References:

Basswood	16"	N.19°E.	26.43	feet
Aspen	10"	S.73°E.	33.48	feet
Steel Sign Post		East	0.70	feet

Stock No. 26273

Sheet 7 of 7

SURVEYOR'S AFFIDAVITState of Wisconsin]
County of Forest] SS

I, Milo E. Stefan, Cadastral Surveyor, U. S. Forest Service, and a registered surveyor in the State of Wisconsin, hereby certify that I have surveyed and subdivided Section 16, Township 34 North, Range 15 East, Fourth Principal Meridian, State of Wisconsin.

The plat map and the notes herewith are a correct representation of the land surveyed and divided. I have surveyed and subdivided said section in accordance with the rules for survey of the public lands and with the statutes of the State of Wisconsin.

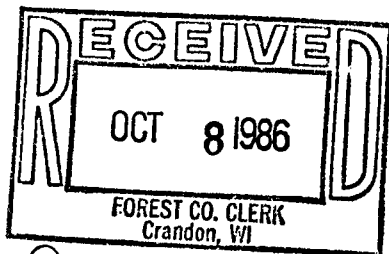


Milo E. Stefan
Cadastral Surveyor, U. S. Forest Service
R.L.S., State of Wisconsin
Certificate S-1558

Plat Ready For Filing:

Dale S. Staege
District Ranger

Date of Survey: 1982



Dora C. James