

Stock No. 26273

FOREST CO SURVEYOR

FILE # 34511-1087

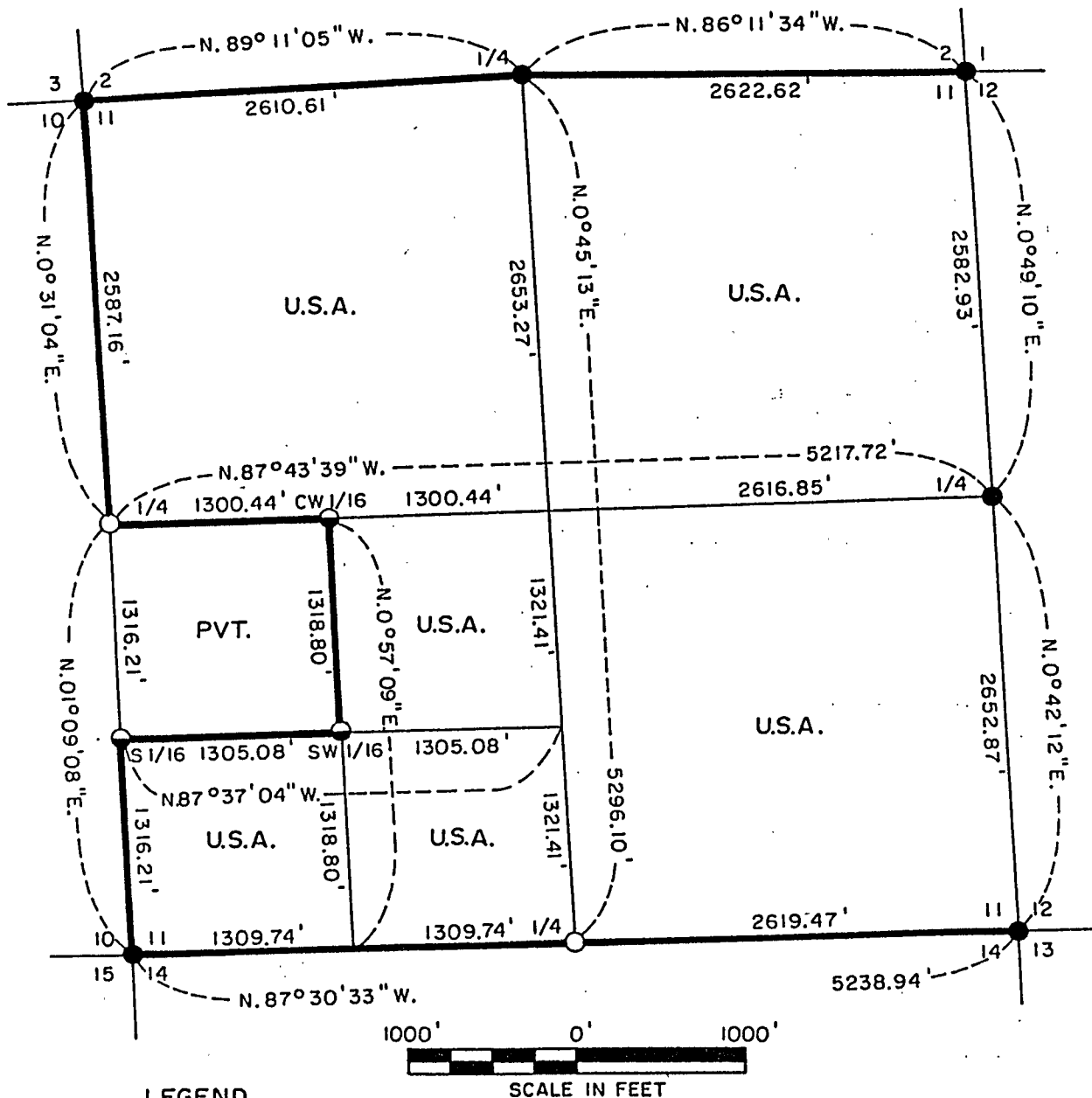
DATE _____ BY _____

Sheet 1 of 4

PLAT OF SURVEY FOR CERTIFIED LAND CORNER RESTORATION AND ESTABLISHMENT

Being the Corners for all of Section 11 except the NW 1/4 of
the SW 1/4

Township 34 North, Range 15 East, Fourth Principal Meridian
FOREST COUNTY, WISCONSIN



Stock No. 26273

Sheet 2 of 4

SURVEY NOTES

This survey was made by R. W. Nordin and Associates, Inc. of Shawano, Wisconsin, under contract with the U. S. Department of Agriculture, Forest Service, for the purpose of restoring and establishing corners on the perimeter of Section 11, and for establishing subdivisional corners within Section 11, and for marking and locating the boundaries of U. S. Government lands on their perimeter and within Section 11, Township 34 North, of Range 15 East, Fourth Principal Meridian, Forest County, Wisconsin.

The U. S. Government Lands in Section 11 were acquired in 1934, 1935, and 1939.

The original government survey of this township was made in 1859.

The corner positions recovered, restored, and established by this survey are marked by monuments described in the map legend.

The corner positions established were located to an accuracy of one part in 3000 or better.

The bearings between corner positions are True bearings determined by solar observations.

The field notes of this survey and a copy of the plat map are on file in the Forest Supervisor's office at Laona, Wisconsin.

CORNERS RECOVERED & RESTORED

1. Section Corner to Sections 2-3-10-11, T.34 N., R.15 E.
This corner position was found marked with an Aluminum Forest Service monument with a stamped cap. Certificate on file in the Forest County courthouse.
2. Section Corner to Sections 1-2-11-12, T.34 N., R.15 E.
This corner position was found marked with an Aluminum Forest Service monument with a stamped cap. Certificate on file in the Forest County courthouse.
3. Section Corner to Sections 11-12-13-14, T. 34 N., R.15 E.
This corner position was found marked with an Aluminum Forest Service monument with a stamped cap. Certificate on file in the Forest County courthouse.
4. Section Corner to Sections 10-11-14-15, T. 34 N., R.15 E.
This corner position was found marked with an Aluminum Forest Service monument with a stamped cap. Certificate on file in the Forest County courthouse.
5. Quarter Corner to Sections 2-11, T.34 N., R.15 E.
This corner position was found marked with an Aluminum Forest Service monument with a stamped cap. Certificate on file in the Forest County courthouse.
6. Quarter Corner to Sections 11-12, T.34 N., R.15 E.
This corner position was found marked with an Aluminum Forest Service monument with a stamped cap. Certificate on file in the Forest County courthouse.
7. Quarter Corner to Sections 11-14, T.34 N., R.15 E.
This corner position was set using the lost method of single proportionate measure and a 2-1/2" x 36" Aluminum Monument with a stamped cap was set to monument the location. No corner evidence was found at the single proportionate position.

Stock No. 26273

Sheet 3 of 4

7.(cont.) Corner References :

Maple	6"	N.57°E.	28.88'
Maple	9"	S.34°E.	19.68'
Maple	8"	S.37°W.	14.17'
Maple	6"	N.36°W.	44.62'

8. Quarter Corner to Sections 10-11, T.34 N., R.15 E.

This corner position was restored from an existing 3/4" diameter iron rod with a flattened top, on East side of a 5' squared by 5' high wooden post. This iron rod was found by Robert Kolbe in the 1930's and has been used in local surveys and is accepted as the best available evidence of the original corner. Replaced the iron rod with a 2-1/2" x 36" Aluminum Monument with a stamped cap and buried the iron rod on the east side of new monument.

Corner References :

Maple	3"-5"	North	17.62'
Maple	6"	S.81°E.	22.04'
Maple	5"	S.6°E.	14.75'
Yellow Birch	12"	S.86°W.	14.86'

CORNERS ESTABLISHED9. Center-West Sixteenth Corner of Section 11, T.34 N., R.15 E.

This corner position was set at the midpoint between the West quarter and Center quarter corners of Section 11 and a 1" x 36" Aluminum Monument with a stamped cap was set to monument the location.

Corner References :

Stone w/ 'X' (sw)	6'x7'x3.5'high	N.15° W.	36.45'
Maple	8"	S.46° E.	15.16'

10. Southwest Sixteenth Corner of Section 11, T.34 N., R.15 E.

This corner position was set at the straight line intersection point of sixteenth lines in the southwest quarter of Section 11 and a 1" x 36" Aluminum Monument with a stamped cap was set to monument the location.

Corner References :

Stone w/ 'X' (sw)	4'x4'x1.5'high	N.72° E.	10.00'
Stone w/ 'X' (n)	5'x7'x3'high	S.1° E.	22.63'

11. South Sixteenth Corner between Sections 10-11, T.34 N., R.15 E.

This corner position was set at the midpoint between the Southwest and the West quarter corners of Section 11 and a 1" x 36" Aluminum Monument with a stamped cap was set to monument the location.

Corner References :

Stone w/ 'X' (e)		S.74° W.	41.18'
Stone w/ 'X' (n)	2.5'x3'x2'high	S.12° E.	48.48'

Stock No. 26273

Sheet 4 of 4

SURVEYOR'S CERTIFICATE

I, R. W. Nordin, Land Surveyor, Wisconsin Registration No. S-791, do hereby certify that I have surveyed, mapped and monumented the following described lands:
Section 11, Township 34 North, of Range 15 East, Fourth Principal Meridian, Forest County, Wisconsin.

That the plat map and notes herewith are a correct representation of the land surveyed and divided. That I have surveyed and subdivided the said Section in accordance with the rules for the survey of the public lands and with the statutes of the State of Wisconsin.

Date of Survey: 1987



A handwritten signature in cursive script, reading "R.W. Nordin", written over a horizontal line.

R. W. Nordin, Land Surveyor
WI Registration No. S-0791

Plat ready for filing

A handwritten signature in cursive script, reading "Dale B. Staeger", written over a horizontal line.

Distict Ranger

