

18. 34-15

10-11-10

HARRY (JESS) SMITH, RLS  
CASEY J. SWANSON, RLS  
Job No. 10-5449  
Dwg. No. 5449thompson



**Northeast  
Surveying, Inc.**  
Registered Wisconsin Land Surveyors

13418 LOGAN ROAD  
SURING, WI 54174  
920-842-2426

# PLAT OF SURVEY

All of Lots 1 thru 4, Block K, of Soperton Plat, located in part of the Northeast quarter of the Southeast quarter and part of the Southeast quarter of the Southeast quarter of Section 8, Township 34 North, Range 15 East, Town of Wabeno, Forest County, Wisconsin.

**LOT 1**      **LOT 2**  
5,825 SQ. FT. 6,918 SQ. FT.  
0.134 ACRES 0.159 ACRES

**LOT 3**      **LOT 4**  
7,354 SQ. FT. 7,360 SQ. FT.  
0.169 ACRES 0.169 ACRES

VOL. 311

PG. 678

NOTE: SET I.P. IS  
S59°12'57"W 0.41'  
DUE TO BOULDERS

S88°27'30"E  
11.00'

**SOPER AVE.**

N88°27'30"W

815.21'

E 1/4 COR.  
SEC. 8  
F.C. MON.

N00°19'33"E

1300.49'

2600.98'

SE COR.  
SEC. 8  
F.C. MON.

"A"

**SOPERTON  
PLAT**

**QUINLAN AVE.**

**BROADWAY  
STREET**

**HINKLEY  
AVE.**

"K"

PG. 84

VOL. 354

N62°33'46"W  
14.41'

N61°07'20"E  
74.25'

S62°28'22"E  
39.76'

S62°33'46"E  
123.40'

N62°34'46"W  
61.70'

N25°42'42"E  
61.70'

N62°35'49"W  
119.41'

N25°42'42"E  
61.70'

N62°36'51"W  
143.41'

N61°07'20"E  
144.00'

N62°33'46"W  
14.41'

N61°07'20"E  
74.25'

S62°28'22"E  
39.76'

S62°33'46"E  
123.40'

N62°34'46"W  
61.70'

N25°42'42"E  
61.70'

N62°35'49"W  
119.41'

N25°42'42"E  
61.70'

N62°36'51"W  
143.41'

N61°07'20"E  
144.00'

N62°33'46"W  
14.41'

N61°07'20"E  
74.25'

S62°28'22"E  
39.76'

S62°33'46"E  
123.40'

N62°34'46"W  
61.70'

N25°42'42"E  
61.70'

N62°35'49"W  
119.41'

N25°42'42"E  
61.70'

N62°36'51"W  
143.41'

N61°07'20"E  
144.00'

N62°33'46"W  
14.41'

N61°07'20"E  
74.25'

S62°28'22"E  
39.76'

S62°33'46"E  
123.40'

N62°34'46"W  
61.70'

N25°42'42"E  
61.70'

N62°35'49"W  
119.41'

N25°42'42"E  
61.70'

N62°36'51"W  
143.41'

N61°07'20"E  
144.00'

N62°33'46"W  
14.41'

N61°07'20"E  
74.25'

S62°28'22"E  
39.76'

S62°33'46"E  
123.40'

N62°34'46"W  
61.70'

N25°42'42"E  
61.70'

N62°35'49"W  
119.41'

N25°42'42"E  
61.70'

N62°36'51"W  
143.41'

N61°07'20"E  
144.00'

N62°33'46"W  
14.41'

N61°07'20"E  
74.25'

S62°28'22"E  
39.76'

S62°33'46"E  
123.40'

N62°34'46"W  
61.70'

N25°42'42"E  
61.70'

N62°35'49"W  
119.41'

N25°42'42"E  
61.70'

N62°36'51"W  
143.41'

N61°07'20"E  
144.00'

N62°33'46"W  
14.41'

N61°07'20"E  
74.25'

S62°28'22"E  
39.76'

S62°33'46"E  
123.40'

N62°34'46"W  
61.70'

N25°42'42"E  
61.70'

N62°35'49"W  
119.41'

N25°42'42"E  
61.70'

N62°36'51"W  
143.41'

N61°07'20"E  
144.00'

N62°33'46"W  
14.41'

N61°07'20"E  
74.25'

S62°28'22"E  
39.76'

S62°33'46"E  
123.40'

N62°34'46"W  
61.70'

N25°42'42"E  
61.70'

N62°35'49"W  
119.41'

N25°42'42"E  
61.70'

N62°36'51"W  
143.41'

N61°07'20"E  
144.00'

N62°33'46"W  
14.41'

N61°07'20"E  
74.25'

S62°28'22"E  
39.76'

S62°33'46"E  
123.40'

N62°34'46"W  
61.70'

N25°42'42"E  
61.70'

N62°35'49"W  
119.41'

N25°42'42"E  
61.70'

N62°36'51"W  
143.41'

N61°07'20"E  
144.00'

N62°33'46"W  
14.41'

N61°07'20"E  
74.25'

S62°28'22"E  
39.76'

S62°33'46"E  
123.40'

N62°34'46"W  
61.70'

N25°42'42"E  
61.70'

N62°35'49"W  
119.41'

N25°42'42"E  
61.70'

N62°36'51"W  
143.41'

N61°07'20"E  
144.00'

N62°33'46"W  
14.41'

N61°07'20"E  
74.25'

S62°28'22"E  
39.76'

S62°33'46"E  
123.40'

N62°34'46"W  
61.70'

N25°42'42"E  
61.70'

N62°35'49"W  
119.41'

N25°42'42"E  
61.70'

N62°36'51"W  
143.41'

N61°07'20"E  
144.00'

N62°33'46"W  
14.41'

N61°07'20"E  
74.25'

S62°28'22"E  
39.76'

S62°33'46"E  
123.40'

N62°34'46"W  
61.70'

N25°42'42"E  
61.70'

N62°35'49"W  
119.41'

N25°42'42"E  
61.70'

N62°36'51"W  
143.41'

N61°07'20"E  
144.00'

N62°33'46"W  
14.41'

N61°07'20"E  
74.25'

S62°28'22"E  
39.76'

S62°33'46"E  
123.40'

N62°34'46"W  
61.70'

N25°42'42"E  
61.70'

N62°35'49"W  
119.41'

N25°42'42"E  
61.70'

N62°36'51"W  
143.41'

N61°07'20"E  
144.00'

N62°33'46"W  
14.41'

N61°07'20"E  
74.25'

S62°28'22"E  
39.76'

S62°33'46"E  
123.40'

N62°34'46"W  
61.70'

N25°42'42"E  
61.70'

N62°35'49"W  
119.41'

N25°42'42"E  
61.70'

N62°36'51"W  
143.41'

N61°07'20"E  
144.00'

N62°33'46"W  
14.41'

N61°07'20"E  
74.25'

S62°28'22"E  
39.76'

S62°33'46"E  
123.40'

N62°34'46"W  
61.70'

N25°42'42"E  
61.70'

N62°35'49"W  
119.41'

N25°42'42"E  
61.70'

N62°36'51"W  
143.41'

N61°07'20"E  
144.00'

N62°33'46"W  
14.41'

N61°07'20"E  
74.25'

S62°28'22"E  
39.76'

S62°33'46"E  
123.40'

N62°34'46"W  
61.70'

N25°42'42"E  
61.70'

N62°35'49"W  
119.41'

N25°42'42"E  
61.70'

N62°36'51"W  
143.41'

N61°07'20"E  
144.00'

N62°33'46"W  
14.41'

N61°07'20"E  
74.25'

S62°28'22"E  
39.76'

S62°33'46"E  
123.40'

N62°34'46"W  
61.70'

N25°42'42"E  
61.70'

N62°35'49"W  
119.41'

N25°42'42"E  
61.70'

N62°36'51"W  
143.41'

N61°07'20"E  
144.00'

N62°33'46"W  
14.41'

N61°07'20"E  
74.25'

S62°28'22"E  
39.76'

S62°33'46"E  
123.40'

N62°34'46"W  
61.70'

N25°42'42"E  
61.70'

N62°35'49"W  
119.41'

N25°42'42"E  
61.70'

N62°36'51"W  
143.41'

N61°07'20"E  
144.00'

N62°33'46"W  
14.41'

N61°07'20"E  
74.25'

S62°28'22"E  
39.76'

S62°33'46"E  
123.40'

N62°34'46"W  
61.70'

N25°42'42"E  
61.70'

N62°35'49"W  
119.41'

N25°42'42"E  
61.70'

N62°36'51"W  
143.41'

N61°07'20"E  
144.00'

N62°33'46"W  
14.41'

N61°07'20"E  
74.25'

S62°28'22"E  
39.76'

S62°33'46"E  
123.40'

N62°34'46"W  
61.70'

N25°42'42"E  
61.70'

N62°35'49"W  
119.41'

N25°42'42"E  
61.70'

N62°36'51"W  
143.41'

N61°07'20"E  
144.00'

N62°33'46"W  
14.41'

N61°07'20"E  
7

Parcels: 28-1139  
28-1138  
28-668  
28-667

8-34-15

10-11-10

FOREST CO SURVEYOR  
FILE # 34508-201006  
DATE BY

HARRY (JESS) SMITH, RLS  
CASEY J. SWANSON, RLS  
Job No. 10-5436  
Dwg. No. 5436PMCONCRETE



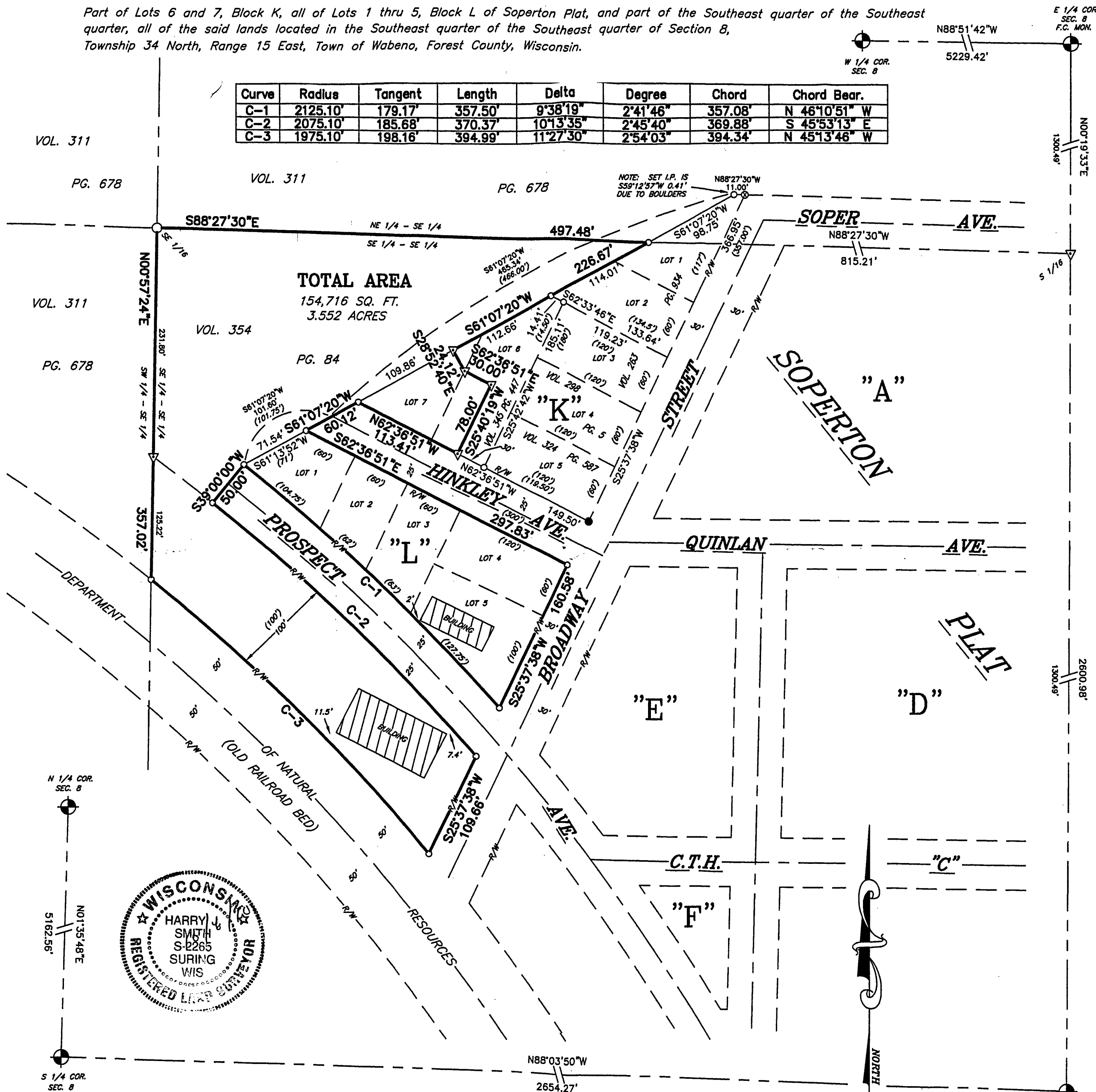
Northeast  
Surveying, Inc.  
Registered Wisconsin Land Surveyors

13418 LOGAN ROAD  
SURING, WI 54174  
920-842-2426

# PLAT OF SURVEY

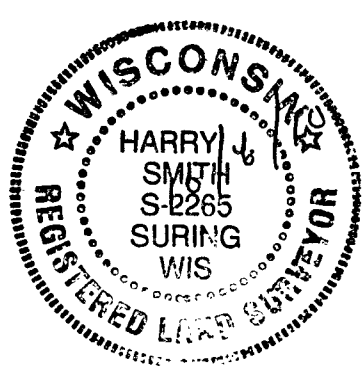
Part of Lots 6 and 7, Block K, all of Lots 1 thru 5, Block L of Soperton Plat, and part of the Southeast quarter of the Southeast quarter, all of the said lands located in the Southeast quarter of the Southeast quarter of Section 8, Township 34 North, Range 15 East, Town of Wabeno, Forest County, Wisconsin.

Curve	Radius	Tangent	Length	Delta	Degree	Chord	Chord Bear.
C-1	2125.10'	179.17'	357.50'	9°38'19"	2°41'46"	357.08'	N 46°10'51" W
C-2	2075.10'	185.68'	370.37'	10°13'35"	2°45'40"	369.88'	S 45°53'13" E
C-3	1975.10'	198.16'	394.89'	11°27'30"	2°54'03"	394.34'	N 45°13'46" W



N 1/4 COR.  
SEC. 8  
5162.56'

S 1/4 COR.  
SEC. 8



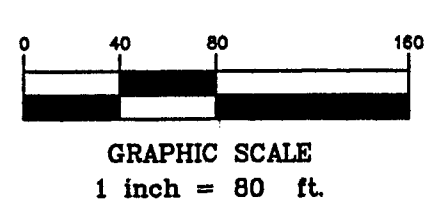
## SURVEYOR'S CERTIFICATE:

I, Harry J. Smith, Registered Land Surveyor, do hereby certify: That by the order and under the direction of Kenneth Mervyn, owner; I have surveyed, and mapped part of Lots 6 and 7, Block K, all of Lots 1 thru 5, Block L of Soperton Plat, and part of the Southeast quarter of the Southeast quarter, all of the said lands located in the Southeast quarter of the Southeast quarter of Section 8, Township 34 North, Range 15 East, Town of Wabeno, Forest County, Wisconsin.

I, further certify that the within map is a true and correct representation of the exterior boundaries of the lands surveyed and that I have fully complied with the provisions of the State of Wisconsin in the surveying and mapping of same to the best of my knowledge and belief.

Dated this 6th day of October, 2010.  
by: *Harry J. Smith*  
Harry J. Smith, Pres.  
NORTHEAST SURVEYING, INC.

- EXISTING FOREST COUNTY MONUMENT OF RECORD
- EXISTING 1" IRON PIPE
- SET 2"x 30" IRON PIPE weighing 3.65 lbs./lin. ft.
- SET 1"x 24" IRON PIPE weighing 1.68 lbs./lin. ft.
- SET CHISELED "X" ON BOULDER
- COMPUTED POINT (NOT SET)
- RECORD DISTANCE



PRIOR TO ANY CONSTRUCTION OR OTHER LAND USE ACTIVITY, ALL BUILDING SETBACKS AND OTHER LAND USE REQUIREMENTS SHOULD BE VERIFIED BY THE FOREST COUNTY ZONING OFFICE.