

DATE \_\_\_\_\_ BY \_\_\_\_\_

SHEET 1 of 1

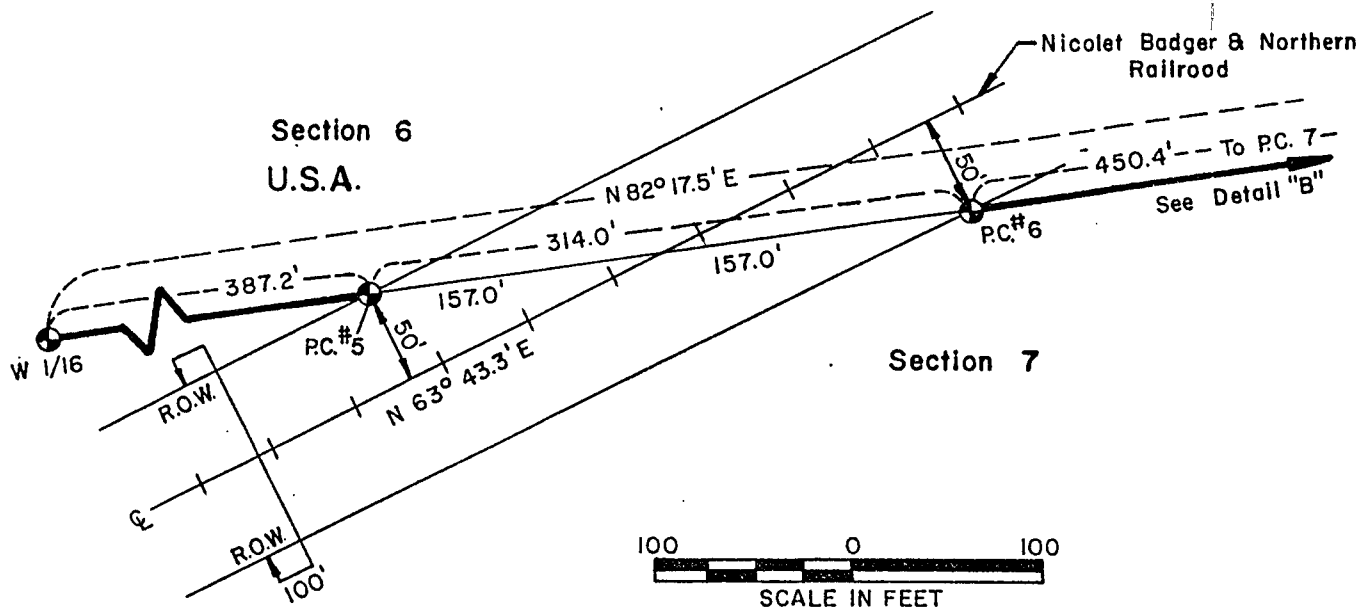
**Conversion Factor:**  
Feet to Meters - .3048  
Meters to Feet - 3.2808

Stock No. 26273

SHEET 2 of

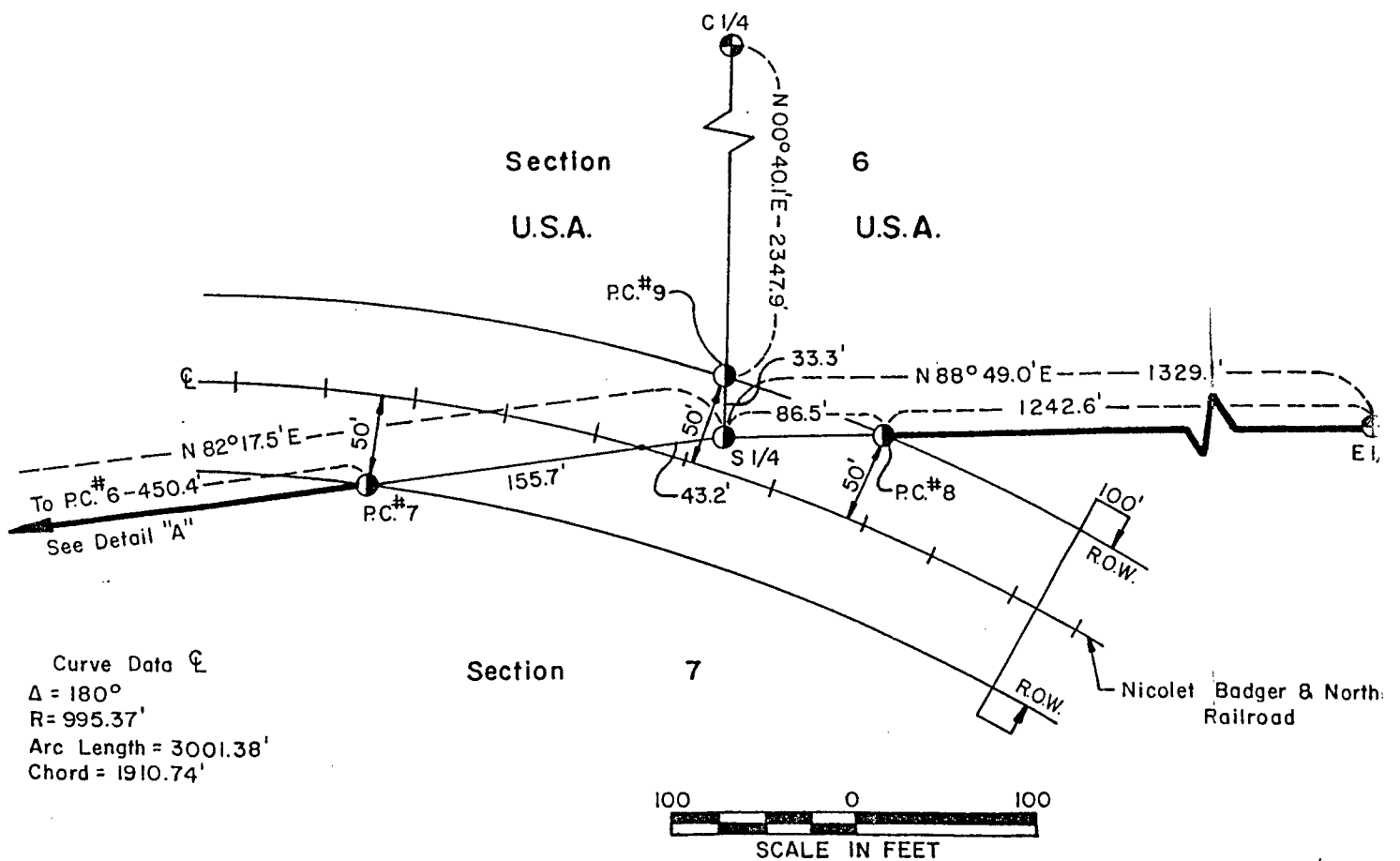
## DETAIL "A"

### RAILROAD RIGHT-OF-WAY



## DETAIL "B"

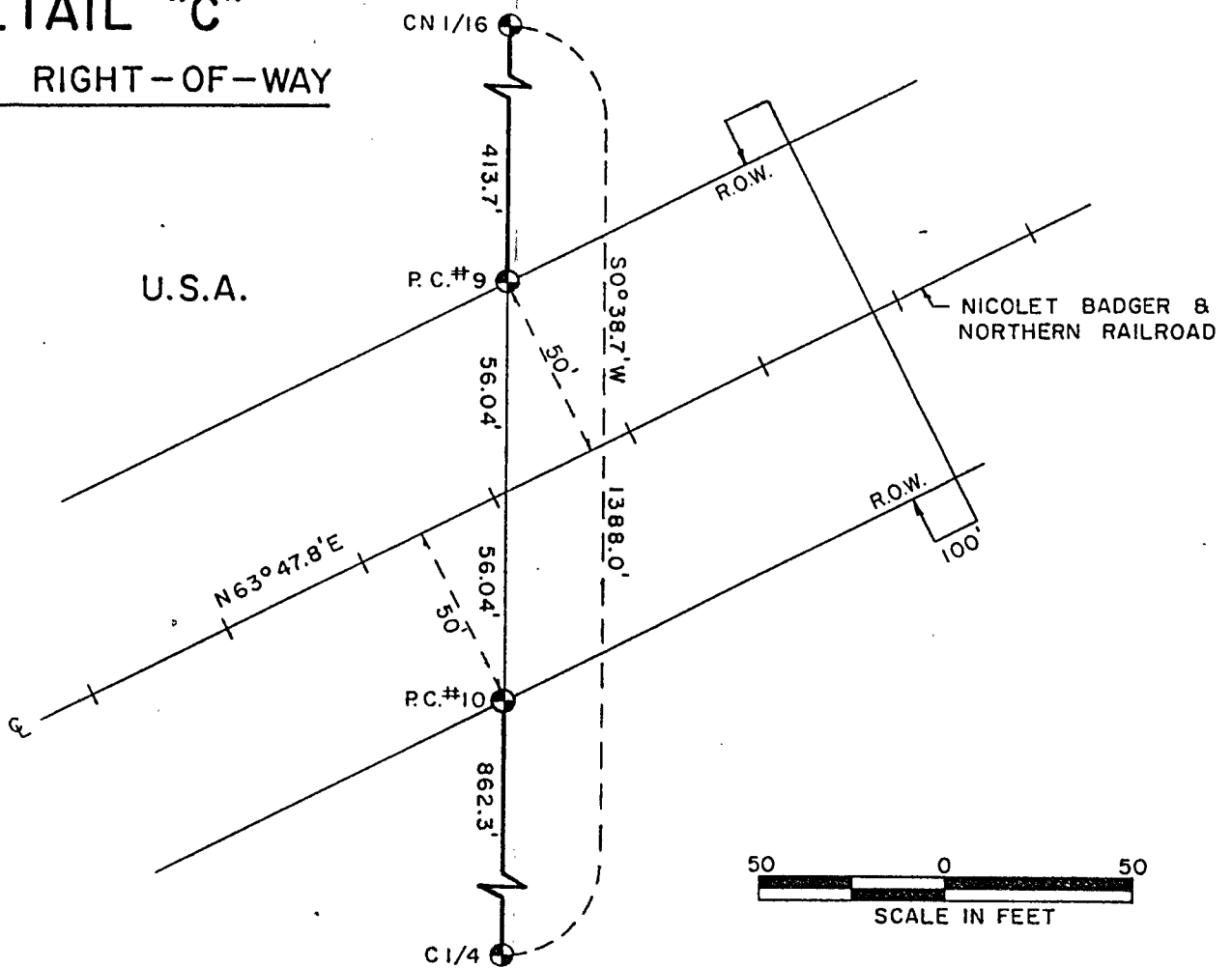
### RAILROAD RIGHT-OF-WAY



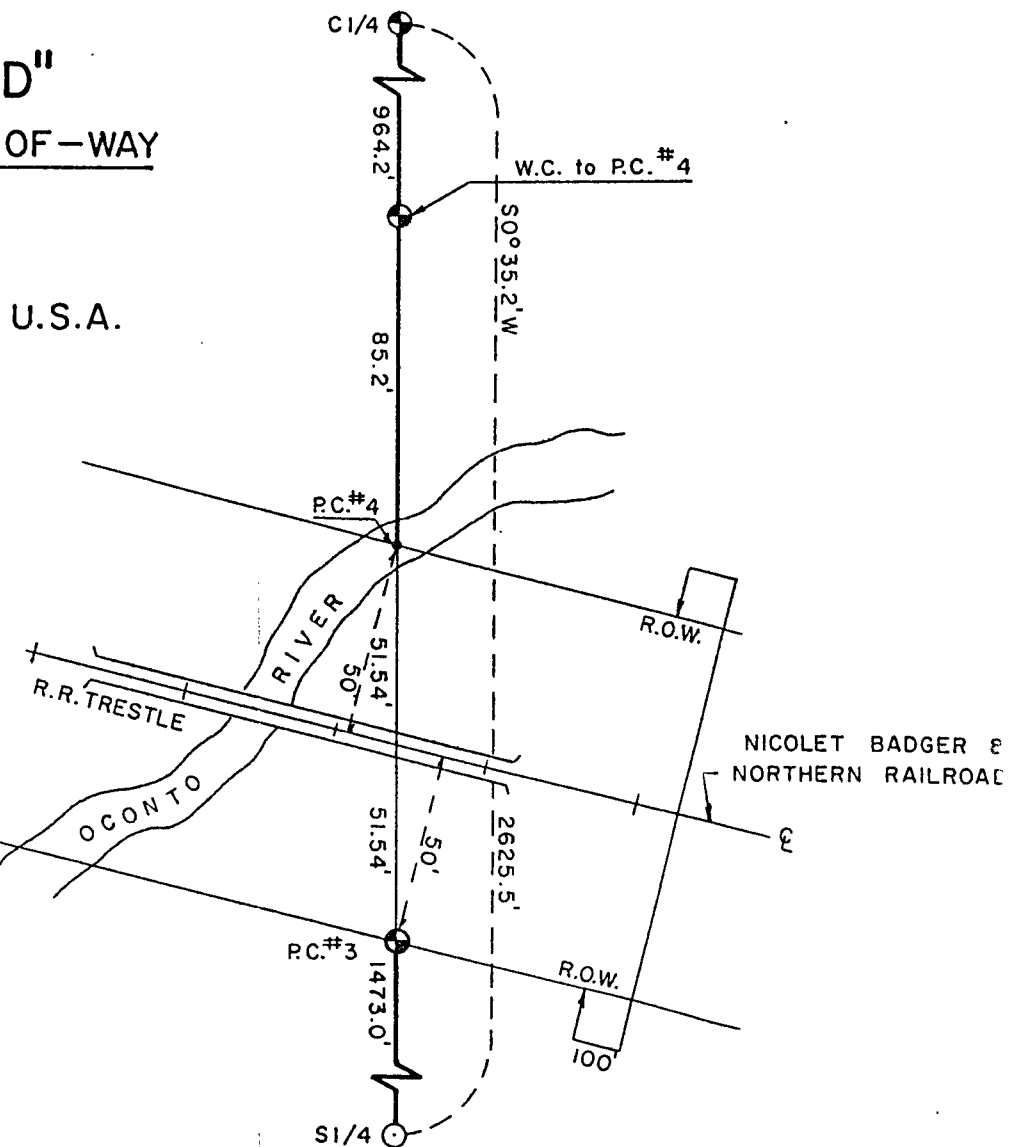
Stock No. 26273

SHEET 3 of 8

# DETAIL "C" RAILROAD RIGHT-OF-WAY

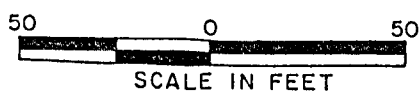


# DETAIL "D" RAILROAD RIGHT-OF-WAY



## CURVE DATA - C

$\Delta = 0^\circ 11' 11''$   
 $R = 19,870.26'$   
 Arc Length = 64.64'  
 Chord = 64.64'



Stock No. 26273

Sheet 4 of 8

SURVEY NOTES

This survey was made by the U. S. Department of Agriculture, Forest Service, for the purpose of restoring and establishing corners on the perimeter of Section 7, for establishing subdivisional corners within Section 7, and for locating and marking the boundaries of U. S. Government lands on their perimeter and within Section 7, Township 34 North, Range 15 East, Fourth Principal Meridian, Forest County, Wisconsin.

The U. S. Government lands in this section were acquired in 1953.

The original government subdivision survey of this township was made in 1857 and 1859. Nathan Smith surveyed this section in 1905, 1907, and 1924.

The corner positions recovered, restored, and established by this survey are marked by the monument described in the map legend.

The corner positions established were located to an accuracy of one part in 3000.

The bearings between corner positions are true bearings as determined by solar observations.

The field notes of this survey and a copy of this plat are on file in the Forest Supervisor's Office at Rhinelander, Wisconsin.

CORNERS RECOVERED AND RESTORED1. Section Corner to Sections 1-6-7-12, T.34N., R.14-15E.

Corner position restored by extension of the centerline of State Highway #32 southerly, as per Smith's surveys from one mile north.

Corner References:

Spruce	7"	N.33°W.	197.98	feet
Steel Sign Post		Northeast	1.9	feet
Steel Sign Post		Southwest	1.3	feet
"X" North		N.30°E.	215.45	feet
"X" South		N.49°E.	168.83	feet
"X" is on north and south concrete bridge abutments.				

2. Section Corner to Sections 6-5-7-8.

Corner position found marked by post hole next to intersection of north, east, south, and west fence lines. Nathan Smith found corner here in early 1900's.

Corner References:

Sugar	7"	S.73°E.	30.10	feet
Sugar	4"	S.12°E.	13.66	feet
Basswood	12"	N.86°W.	36.51	feet
Rock Elm	8"	N.1°W.	24.95	feet
Steel Sign Post		Southwest	2.1	feet

3. Section Corner to Sections 7-8-17-18, T.34N., R.15E.

Corner position found marked by a Forest County aluminum monument, certificate filed, Document Number 112924.

Corner References:

1" Iron Pipe		N.18°-50'W.	15.93	feet
1" Iron Pipe		S.14°-36'-20"W.	25.72	feet
1" Iron Pipe		S.89°-51'-20"E.	10.30	feet
Basswood	10"	N.56°E.	32.85	feet
Sugar Maple	8"	S.68°E.	38.73	feet
Yellow Birch	10"	S.14°W.	26.11	feet
Yellow Birch	8"	N.18°W.	16.78	feet
Steel Sign Post		East	1.6	feet

Stock No. 26273

Sheet 5 of 8

4. Section Corner to Sections 7-18-12-13, T.34N., R.14-15E.

Corner position found marked by an iron pipe below road surface at road intersection.

Corner References:

Basswood	10"	N.71°E.	86.73 feet
Butternut	12"	S.15°E.	140.74 feet
Sugar Maple	8"	S.57°W.	113.00 feet
Sugar Maple	4"	N.13°W.	159.25 feet
Steel Sign Post		S.12°E.	17.3 feet

5. Quarter Corner to Sections 6-7, T.34N., R.15E.

Corner position restored at intersection of fence lines, north and east.

Corner References:

Tamarac	12"	N.4°E.	46.18 feet
Property Corner #9		N.0-40.1E.	33.30 feet
Property Corner #7		S.82-17.5W.	198.90 feet
Property Corner #8		N.88-49.0E.	86.50 feet

6. Quarter Corner to Sections 7-8, T.34N., R.15E.

Corner position found marked by a Forest County monument.

7. Quarter Corner to Sections 7-18, T.34N., R.15E.

Corner position found marked by a fence corner. Position is supported by bearing and distances to section corner as recorded in the Town of Wabeno plat, dating back to 1890's.

Corner References:

Sugar Maple	6"	N.18°E.	21.62 feet
Sugar Maple	8"	S.34°W.	21.15 feet
Steel Sign Post		Southwest	1.0 feet

8. Quarter Corner to Sections 7-12, T.34N., R.14-15E.

Corner position restored in centerline of State Highway #52. Fence lines, east and west. Distances fit well with Nathan Smith's survey of early 1900.

Corner References:

2" x 36" Aluminum monument, witness corner,		N.85-35.6E.,	75.00 feet
Sugar	20"	N.33°E.	58.33 feet
Sugar	8"	N.61°E.	79.97 feet
Utility Pole		South	3.85 feet
Steel Sign Post		East	1.6 feet

9. West Sixteenth Corner to Sections 7-18.

Corner position found located by a fence corner. Fence lines, east, west, and north. Position is in accordance with bearings and distances to section corner, westerly, and quarter corner, easterly.

Corner References:

Red Pine	5"	N.43°E.	58.95 feet
Sugar Maple	8"	S.36°E.	53.99 feet
Steel Sign Post		South	1.0 feet

10. Center Quarter to Section 7, T.34N., R.15E.

Corner position found marked by post hole in mound of rock at fence intersection. Nathan Smith used this in 1905 as center quarter, as set by railroad surveyor.

Corner References:

Black Ash	4"	S.88°E.	3.14 feet
Black Ash	6"	S.31°E.	19.18 feet
Black Ash	10"	N.80°W.	21.38 feet
Steel Sign Post		South	1.0 feet

Stock No. 26273

Sheet 6 of 8

CORNERS ESTABLISHED1. East One-Sixteenth to Sections 6-7, T.34N., R.15E.

Corner established midpoint and on line between the southeast corner and the south quarter corner of Section 6.

Corner References:

Aspen	6"	N.83°E.	34.65 feet
White Birch	4"	S.3°E.	73.08 feet
Aspen	5"	N.56°W.	35.04 feet
Steel Sign Post		West	2.6 feet

2. West One-Sixteenth to Sections 6-7, T.34N., R.15E.

Corner established proportionally and on line between the southwest corner and the south quarter corner of Section 6.

Corner References:

Balsam	4"	N.44°E.	36.42 feet
Balsam	5"	S.49°E.	21.53 feet
Spruce	4"	S.80°W.	46.27 feet
Steel Sign Post		North	1.8 feet

3. North One-Sixteenth to Sections 7-12, T.34N., R.14-15E.

Corner established midpoint and on line between the northwest corner and the west quarter corner of Section 7.

Corner References:

Balsam	5"	S.33°E.	60.14 feet
White Birch	4"	S.59°W.	45.19 feet
Utility Pole No. 34-14 12E7		N.24°W.	21.36 feet
Steel Sign Post		East	

4. Center North One-Sixteenth to Section 7, T.34N., R.15E.

Corner established midpoint and on line between the center quarter corner and the north quarter corner of Section 7.

Corner References:

Aspen	8"	S.86°E.	23.41 feet
Hemlock	20"	S.56°W.	65.12 feet
White Birch	6"	N.21°W.	91.25 feet
Steel Sign Post		West	2.1 feet

5. Southwest One-Sixteenth to Section 7, T.34N., R.15E.

Corner established at the intersection of the south and west one-sixteenth lines of Section 7.

Corner References:

Sugar	7"	N.1°E.	41.21 feet
Red Pine	4"	S.35°E.	36.49 feet
Red Pine	5"	S.18°W.	26.96 feet
Steel Sign Post		South	2.7 feet

6. Property Corner No. 1, Section 7, T.34N., R.15E.

Corner established at the northwest corner of Lot 4 of Jecklin's Addition, on the east-west quarter line, 885.80 feet east of the west quarter corner to Section 7.

Corner References:

Sugar	10"	N.39°E.	52.15 feet
Sugar	22"	N.87°E.	54.85 feet
Steel Sign Post		West	0.9 feet
Steel Sign Post		South	4.0 feet

Stock No. 26273

Sheet 7 of 8

7. Property Corner No. 2, Section 7, T.34N., R.15E.

Corner established at the southwest corner of Lot 7 of Jecklin's Addition, on the south one-sixteenth line, 576.50 feet west of the southwest one-sixteenth to Section 7.

Corner References:

Sugar	18"	N.29°E.	49.36 feet
Sugar	18"	N.1°W.	76.72 feet
Steel Sign Post		East	1.2 feet

8. Property Corner No. 3, Section 7, T.34N., R.15E.

Corner established at the intersection of the north-south quarter line and the south right-of-way of the NB&N Railroad, 1,473.0 feet north of the south quarter corner of Section 7.

Corner References:

Railroad Bridge Abuttment		N.8°E.	43.74 feet
Black Ash	3"	S.48°E.	21.95 feet
Black Ash	5"	S.45°W.	50.20 feet
Steel Sign Post		South	4.9 feet

9. Property Corner No. 4, Section 7, T.34N., R.15E.

Corner established at the intersection of the north-south quarter line and the north right-of-way of the NB&N Railroad, 1,576.1 feet north of the south quarter corner of Section 7.

Corner References:

2" x 36" Aluminum monument, witness corner, N.00-35.2E.,			86.16 feet
Sugar	8"	N.89°E.	46.87 feet
Red Pine	6"	S.81°W.	41.31 feet
Red Pine	8"	N.45°W.	33.11 feet
Steel Sign Post		South	1.9 feet

10. Property Corner No. 5, Sections 6-7, T.34N., R.15E.

Corner established at the intersection of the section line to said sections and the west right-of-way to NB&N Railroad, 387.2 feet east of W 1/16 corner.

Corner References:

White Spruce	2"	S.15°E.	17.08 feet
Aspen	7"	S.73°W.	13.08 feet
Aspen	4"	N.11°W.	15.07 feet
Steel Sign Post		West	2.4 feet

11. Property Corner No. 6, Sections 6-7, T.34N., R.15E.

Corner established at the intersection of the section line to said sections and the east right-of-way to NB&N Railroad, 701.2 feet east of W 1/16 corner.

Corner References:

White Spruce	4"	N.72°E.	19.33 feet
Tamarack	12"	S.18°W.	31.78 feet
Tamarack	6"	N.66°W.	5.58 feet
Steel Sign Post		East	2.2 feet

12. Property Corner No. 7, Sections 6-7, T.34N., R.15E.

Corner established at the intersection of the section line of said sections and the west right-of-way of the NB&N Railroad, 198.9 feet west of the south quarter corner to Section 6.

Corner References:

Aspen	5"	N.85°E.	30.89 feet
White Spruce	12"	S.13°W.	58.91 feet
Balm of Gilead	8"	West	11.56 feet
Steel Sign Post		West	4.2 feet

Stock No. 26273

Sheet 8 of 8

13. Property Corner No. 8, Sections 6-7, T.34N., R.15E.

Corner established at the intersection of the section line of said sections and the east right-of-way of the NB&N Railroad, 86.5 feet east of the south quarter corner to Section 6.

Corner References:

Steel Sign Post	East	11.0 feet
-----------------	------	-----------

14. Property Corner No. 9, Section 7, T.34N., R.15E.

Corner established at the intersection of the north-south quarter line and the north right-of-way of the NB&N Railroad, 974.4 feet north of center quarter corner to Section 7.

Corner References:

Red Maple	4"	N.15°E.	10.76 feet
Basswood	5"	N.75°W.	22.70 feet
Steel Sign Post		North	1.9 feet

15. Property Corner No. 10, Section 7, T.34N., R.15E.

Corner established at the intersection of the north-south quarter line and the south right-of-way of the NB&N Railroad, 862.3 feet north of the center quarter corner to Section 7.

Corner References:

Aspen	6"	S.89°E.	7.45 feet
Aspen	18"	S.12°W.	24.22 feet
Steel Sign Post		South	20.5 feet

SURVEYOR'S AFFIDAVIT

State of Wisconsin ]  
County of Forest ] SS

I, Milo E. Stefan, Cadastral Surveyor, U. S. Forest Service and a registered surveyor in the State of Wisconsin, hereby certify that I have surveyed and subdivided Section 7, Township 34 North, Range 15 East, Fourth Principal Meridian, State of Wisconsin.

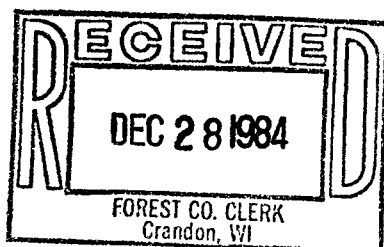
The plat map and the notes herewith are a correct representation of the land surveyed and divided. I have surveyed and subdivided said section in accordance with the rules for survey of the public lands and with the statutes of the State of Wisconsin.



Date of Survey: 1982

Milo E. Stefan  
Cadastral Surveyor, U. S. Forest Service  
R. L. S., State of Wisconsin  
Certificate S-1558

Plat Ready For Filing: [Signature]  
District Ranger



Sallie L. Dyer  
Deputy Co. Clerk