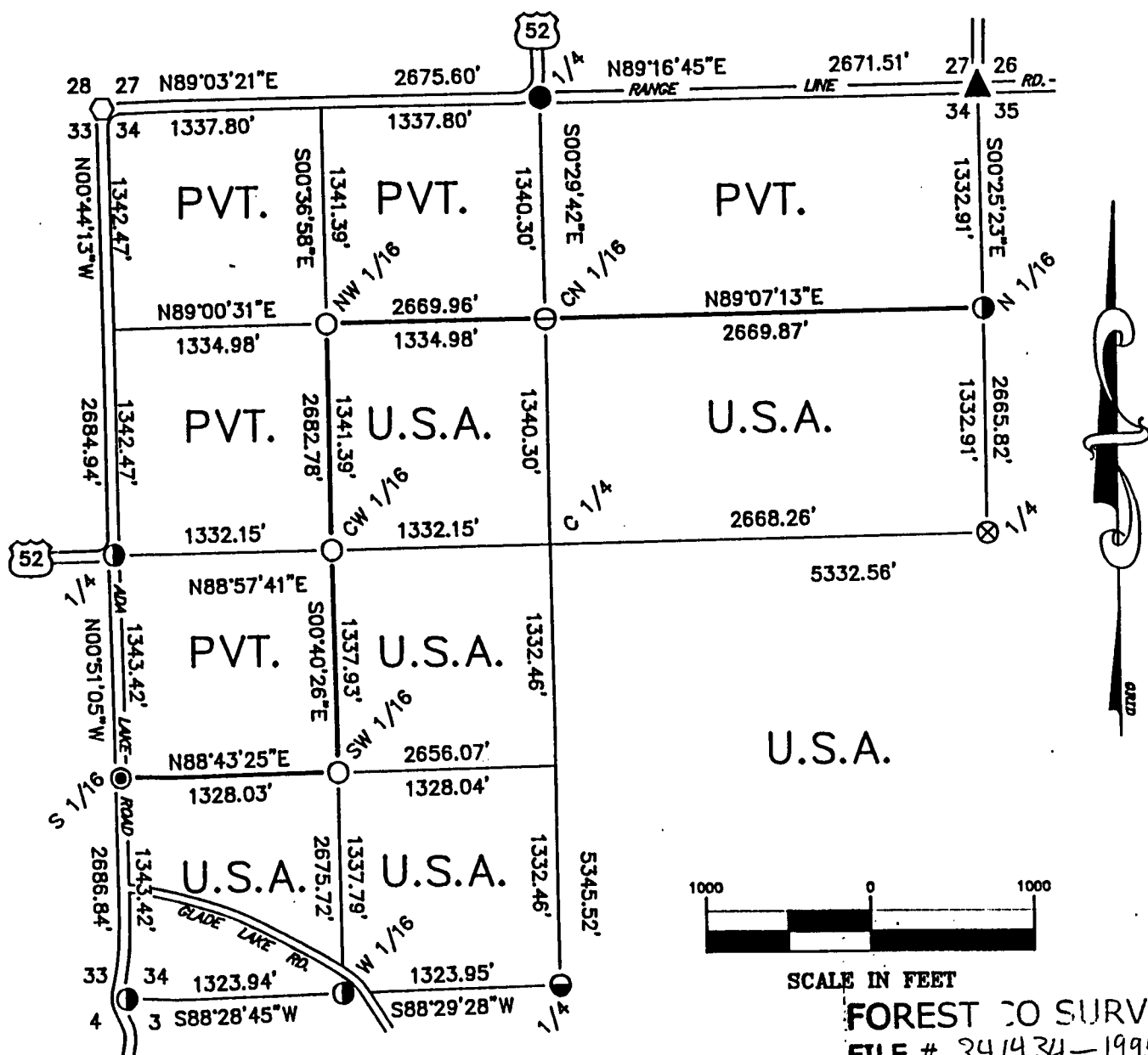


PLAT OF SURVEY Sheet on

U.S. GOVERNMENT LAND

Sheet one of four

Being the SE 1/4, S 1/2 of the SW 1/4, NE 1/4 of the SW 1/4,
SE 1/4 of the NW 1/4 and the S 1/2 of the NE 1/4
in Section 34, Township 34 North, Range 14 East,
Fourth Principal Meridian, Forest County, Wisconsin



- = EXISTING 1" DIAMETER IRON PIPE WITH WITNESS CORNER
- ⊙ = EXISTING 2" DIAMETER IRON PIPE WITH BRASS CAP STAMPED FOR CORNER
- ⦿ = EXISTING 2" DIAMETER ALUMINUM MONUMENT WITH CAP STAMPED FOR CORNER
- ⊗ = EXISTING 2 1/2" DIAMETER ALUMINUM MONUMENT WITH CAP STAMPED FOR CORNER
- ⬡ = EXISTING 2" DIAMETER AXEL SHAFT WITH WITNESS CORNER
- ▲ = EXISTING RAILROAD SPIKE WITH WITNESS CORNER
- = SET 1" DIAMETER ALUMINUM MONUMENT, 36" LONG WITH CAP STAMPED FOR CORNER
- ⊖ = SET 1" DIAMETER ALUMINUM WITNESS CORNER, 36" LONG - 1' WEST OF CORNER
- ◎ = SET 1"x 30" IRON ROD WITH 1"x 36" ALUMINUM WITNESS CORNER
- = MARKED BOUNDARY LINES OF U.S. GOVERNMENT LAND

SURVEY NOTES

This survey was made by AARON ASSOCIATES of Oconto Falls, Wisconsin under contract with the U.S. Department of Agriculture, Forest Service for the purpose of restoring and establishing corners on the perimeter of Section 34, for establishing subdivisional corners within Section 34, and for locating and marking the boundaries of U.S. Government lands on their perimeter and within Section 34, Township 34 North, Range 14 East, 4th Principal Meridian, Forest County, Wisconsin.

The U.S. Government lands in Section 34 were acquired in 1934 and 1942.

The original government survey of this township was made in 1837 and 1859.

The corner positions recovered, restored, and established by this survey are marked by the monuments described in the map legend.

The corner positions established were located to an accuracy of one part in 3000.

The field notes and a copy of this plat map are on file in the Forest Supervisor's office at Rhinelander, Wisconsin.

Wisconsin North Zone Coordinates were computed from GPS observations and are based on 1983 North American datum.

The bearings between corner positions are Grid bearings based on the Wisconsin North Zone State Plane Coordinate System.

Conversions between grid bearings and true bearings are performed by the use of the following algebraic formula: True bearing - Convergence angle = Grid bearing. (Close attention to the algebraic sign must be observed, i.e. +/- of the convergence angle).

Ground distances are shown on the Plat map. Conversion between Ground distance and Grid distance is performed by the following formula:

$$\text{Grid Distance} / (\text{Grid Scale Factor} \times (20,906,000 / (20,906,000 + \text{Mean Elev.}))) = \text{Ground Distance}$$

COORDINATE VALUES ON 1983 N.A.D.

Corner Code	North Latitude	West Longitude	Plane Coords.		Convergence Angle	Scale Factor
			North	East		
NE	45-23-35.46	88-43-08.27	85,242.341	2,297,606.367	00-55-27	1.000036014
SW	45-22-42.40	88-44-23.34	79,793.571	2,292,334.454	00-54-33	1.000039482
NW	45-23-35.44	88-44-23.19	85,164.650	2,292,260.012	00-54-33	1.000036009
E 1/4	45-23-09.04	88-43-08.59	82,576.676	2,297,626.055	00-55-27	1.000037729
S 1/4	45-22-42.68	88-43-46.25	79,863.569	2,294,981.347	00-54-59	1.000039464
W 1/4	45-23-08.93	88-44-23.30	82,480.012	2,292,294.538	00-54-33	1.000037737
N 1/4	45-23-35.45	88-43-45.70	85,208.735	2,294,935.156	00-55-00	1.000036008
N 1/16	45-23-22.20	88-43-08.43	83,909.508	2,297,616.211	00-55-27	1.000036870
W 1/16	45-22-42.54	88-44-04.80	79,828.706	2,293,657.892	00-54-46	1.000039473
S 1/16	45-22-55.67	88-44-23.32	81,136.791	2,292,314.496	00-54-33	1.000038607
CN 1/16	45-23-22.22	88-43-45.84	83,868.522	2,294,946.738	00-55-00	1.000036868
CW 1/16	45-23-08.96	88-44-04.64	82,504.160	2,293,626.428	00-54-46	1.000037735

NW 1/16 45-23-22.20	88-44-04.54	83,845.426	2,293,612.006	00-54-46	1.000036870
SW 1/16 45-22-55.75	88-44-04.72	81,166.365	2,293,642.161	00-54-46	1.000038602

CORNERS RECOVERED AND RESTORED

- 1) Section Corner to Sections 26-27-34-35, T34N, R14E
This corner position was found monumented by Al Harrison, RLS. Certificate on file in the Forest County courthouse.
- 2) Section Corner to Sections 3-4-33-34, T33 & 34N, R14E
This corner position was found monumented by Jean Resvick, RLS. Certificate on file in the Forest County courthouse.
- 3) Section Corner to Sections 26-27-33-34, T34N, R14E
This corner position was found monumented by Al Harrison, RLS. Certificate on file in the Forest County courthouse.
- 4) Quarter Corner to Sections 34-35, T34N, R14E
This corner position was found monumented by Al Harrison, RLS. Certificate on file in the Forest County courthouse.
- 5) Quarter Corner to Sections 3-34, T33 & 34N, R14E
This corner position was found monumented by Jean Resvick, RLS. Certificate on file in the Forest County courthouse.
- 6) Quarter Corner to Sections 33-34, T34N, R14E
This corner position was found monumented by Jean Resvick, RLS. Certificate on file in the Forest County courthouse.
- 7) Quarter Corner to Sections 27-34, T34N, R14E
This corner position was found monumented by Al Harrison, RLS. Certificate on file in the Forest County courthouse.
- 8) North-Sixteenth Corner to Sections 34-35, T34N, R14E
This corner position was found monumented by Al Harrison, RLS. Field notes of establishment on file in the Forest Supervisor's office at Rhinelander.
- 9) West Sixteenth Corner to Sections 3-34, T33 & 34N, R14E
This corner position was found monumented by Milo Stefan, RLS. Field notes of establishment on file in the Forest Supervisor's office at Rhinelander.

CORNERS ESTABLISHED

- 1) South Sixteenth Corner to Sections 33-34, T34N, R14E
This corner position was set at midpoint and on line between the southwest and west quarter corners of section 34. Corner references: Corner point is an iron rod in the east roadbed shoulder.

Maple	11"	N 30 E	54.90 ft.
Maple	10"	S 85 E	60.15 ft.
WC		East	26.05 ft.
Steel Sign Post		East	26.55 ft.

2) Center-North Sixteenth Corner to Section 34, T34N, R14E

This corner position was set at midpoint and on line between the center quarter and north quarter corners of section 34. Corner point hit boulder underground, therefore a witness corner was set. 1.5 feet to the west.

Corner references to Witness Corner:

Cherry	9"	South	2.43 ft.
Aspen	9"	S 78 W	9.03 ft.
Iron fence post		North	0.60 ft.
Steel sign Post		East	2.10 ft.

3) Northwest Sixteenth Corner to Section 34, T34N, R14E

This corner position was set at the straight line intersection point of the north-south and east-west sixteenth lines in the northwest quarter of section 34. Corner references:

Maple	9"	S 34 E	21.20 ft.
Maple 9clump)	9'	S 06 W	38.14 ft.
Steel Sign Post		East	2.00 ft.

4) Center-West Sixteenth Corner to Section 34, T34N, R14E

This corner position was set at midpoint and on line between the center quarter and west quarter corners of said section 34. Corner references:

Maple	6"	S 68 E	22.78 ft.
Maple (dbl)	7"	S 15 E	16.83 ft.
Steel Sign Post		South	1.15 ft.

5) Southwest Sixteenth Corner to Section 34, T34N, R14E

This corner position was set at the straight line intersection point of the north-south and east-west sixteenth lines in the southwest quarter of section 34. Corner references:

Maple	11"	S 82 E	5.76 ft.
Maple	14"	S 19 E	21.86 ft.
Steel Sign Post		West	0.15 ft.

SURVEYOR'S AFFIDAVIT

STATE OF WISCONSIN)
FOREST COUNTY)SS

I, Kim H Pritzlaff, State of Wisconsin Registered Land Surveyor No. 1259, do hereby certify: that I have surveyed and subdivided Section 34, Township 34 North, Range 14 East, Fourth Principal Meridian, Forest County, Wisconsin, under contract with the U.S.D.A. Forest Service, using the section dimensions and subdivision data as provided by the forest Service.

The Plat Map and notes herewith are a correct representation of the land surveyed and subdivided. I have surveyed and subdivided said section in accordance with the rules for survey of the public lands and with the Statutes of the State of Wisconsin.



Kim H Pritzlaff

Kim H Pritzlaff, RLS No. 1259
AARON ASSOCIATES
Oconto Falls, Wisconsin

Plat ready for filing:

Timothy M. Hatcher
District Ranger

Date of Survey: 1995

