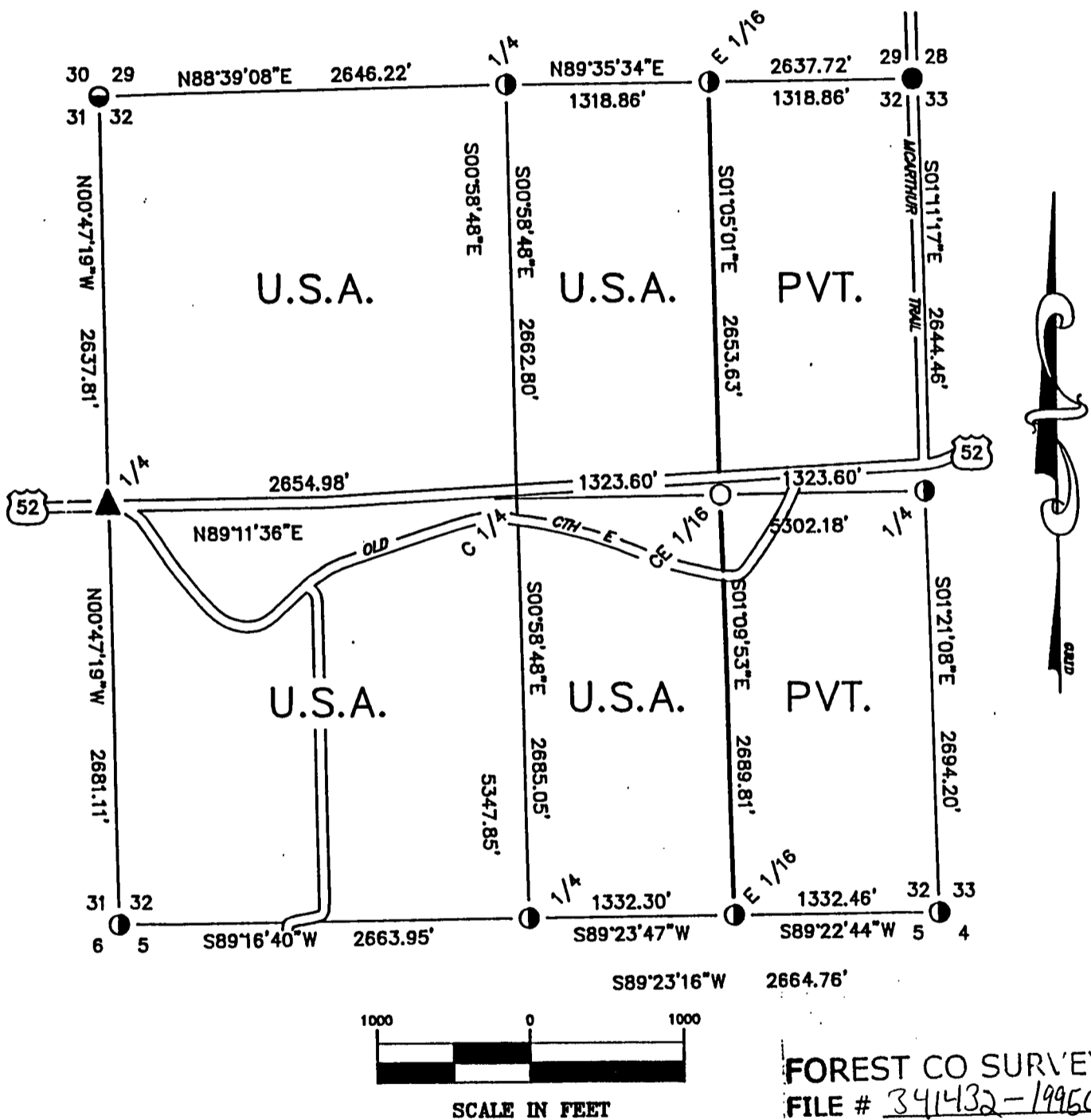


PLAT OF SURVEY Sheet one of four

U.S. GOVERNMENT LAND

Being the NW 1/4, SW 1/4, the W 1/2 of the SE 1/4 and the W 1/2 of the NE 1/4 in Section 32, Township 34 North, Range 14 East, Fourth Principal Meridian, Forest County, Wisconsin



● = EXISTING 1" DIAMETER IRON PIPE WITH WITNESS CORNER

① = EXISTING 2" DIAMETER ALUMINUM MONUMENT WITH CAP STAMPED FOR CORNER

● = EXISTING 2" DIAMETER IRON PIPE WITH BRASS CAP STAMPED FOR CORNER

▲ = EXISTING RAILROAD SPIKE

○ = SET 1" DIAMETER ALUMINUM MONUMENT, 36" LONG WITH CAP STAMPED FOR CORNER

— = MARKED BOUNDARY LINES OF U.S. GOVERNMENT LAND

SURVEY NOTES

This survey was made by AARON ASSOCIATES of Oconto Falls, Wisconsin under contract with the U.S. Department of Agriculture, Forest Service for the purpose of restoring and establishing corners on the perimeter of Section 32, for establishing subdivisional corners within Section 32, and for locating and marking the boundaries of U.S. Government lands on their perimeter and within Section 32, Township 34 North, Range 14 East, 4th Principal Meridian, Forest County, Wisconsin.

The U.S. Government lands in Section 32 were acquired in 1935 and 1936.

The original government survey of this township was made in 1837 and 1859.

The corner positions recovered, restored, and established by this survey are marked by the monuments described in the map legend.

The corner positions established were located to an accuracy of one part in 3000.

The field notes and a copy of this plat map are on file in the Forest Supervisor's office at Rhinelander, Wisconsin.

Wisconsin North Zone Coordinates were computed from GPS observations and are based on 1983 North American datum.

The bearings between corner positions are Grid bearings based on the Wisconsin North Zone State Plane Coordinate System.

Conversions between grid bearings and true bearings are performed by the use of the following algebraic formula: True bearing - Convergence angle = Grid bearing. (Close attention to the algebraic sign must be observed, ie: +/- of the convergence angle).

Ground distances are shown on the Plat map. Conversion between Ground distance and Grid distance is performed by the following formula:

$$\text{Grid Distance} / (\text{Grid Scale Factor} \times (20,906,000 / (20,906,000 + \text{Mean Elev.}))) = \text{Ground Distance}$$

COORDINATE VALUES ON 1983 N.A.D.

Corner Code	North Latitude	West Longitude	Plane Coords.		Convergence Angle	Scale Factor
			North	East		
NE	45-23-34.48	88-45-37.46	84,984.599	2,286,962.139	00-53-39	1.000036071
SE	45-22-41.78	88-45-36.96	79,647.434	2,287,080.542	00-53-40	1.000039523
SW	45-22-41.98	88-46-51.61	79,585.376	2,281,752.359	00-52-46	1.000039510
NW	45-23-34.49	88-46-51.49	84,903.609	2,281,679.157	00-52-46	1.000036070
N 1/4	45-23-34.59	88-46-14.41	84,965.849	2,284,324.559	00-53-12	1.000036057
E 1/4	45-23-08.38	88-45-37.26	82,340.795	2,287,016.969	00-53-39	1.000037773
S 1/4	45-22-41.91	88-46-14.29	79,618.957	2,284,416.009	00-53-13	1.000039515
W 1/4	45-23-08.45	88-46-51.55	82,266.138	2,281,715.461	00-52-46	1.000037768
E 1/16 south line	45-22-41.84	88-45-55.63	79,632.992	2,285,748.199	00-53-26	1.000039519
E 1/16 north line	45-23-34.59	88-45-55.94	84,975.031	2,285,643.286	00-53-26	1.000036064
CE 1/16	45-23-08.39	88-45-55.81	82,322.158	2,285,693.532	00-53-26	1.000037772

CORNERS RECOVERED AND RESTORED

- 1) Section Corner to Sections 28-29-32-33, T34N, R14E
This corner position was found monumented by Al Harrison, RLS. Certificate on file in the Forest County courthouse.
- 2) Section Corner to Sections 4-5-32-33, T33 & 34N, R14E
This corner position was found monumented by Al Harrison, RLS. Certificate on file in the Forest County courthouse.
- 3) Section Corner to Sections 5-6-31-32, T33 & 34N, R14E
This corner position was found monumented by Al Harrison, RLS. Certificate on file in the Forest County courthouse.
- 4) Section Corner to Sections 29-30-31-32, T34N, R14E
This corner position was found monumented by Al Harrison, RLS. Certificate on file in the Forest county courthouse.
- 5) Quarter Corner to Sections 29-32, T34N, R14E
This corner position was found monumented by Al Harrison, RLS. Certificate on file in the Forest county courthouse.
- 6) Quarter Corner to Sections 32-33, T34N, R14E
This corner position was found monumented by Al Harrison, RLS. Certificate on file in the Forest County courthouse.
- 7) Quarter Corner to Sections 5-32, T33 & 34N, R14E
This corner position was found monumented by Al Harrison, RLS. Certificate on file in the Forest County courthouse.
- 8) Quarter Corner to Sections 31-32, T34N, R14E
This corner position was found monumented by Al Harrison, RLS. Certificate on file in the Forest County courthouse.
- 9) East Sixteenth Corner to Sections 29-32, T34N, R14E
This corner position was found monumented by Al Harrison, RLS. Record of corner filed in Forest Supervisor's Office at Rhinelander.
- 10) East Sixteenth Corner to Sections 5-32, T33 & 34N, R14E
This corner position was found monumented by Al Harrison, RLS. Record of corner filed in Forest Supervisor's Office at Rhinelander.

CORNERS ESTABLISHED

- 1) Center East Sixteenth Corner to Section 32, T34N, R14E
This corner position was set at midpoint and on line between the center quarter and east quarter corners of section 32. Corner references:

Maple	8"	S 64 E	2.38 ft.
Maple	8"	S 38 W	15.79 ft.
Steel Sign Post		North	0.50 ft.

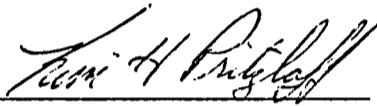
SURVEYOR'S AFFIDAVIT

STATE OF WISCONSIN)
FOREST COUNTY)SS

I, Kim H Pritzlaff, State of Wisconsin Registered Land Surveyor No. 1259, do hereby certify: that I have surveyed and subdivided Section 32, Township 34 North, Range 14 East, Fourth Principal Meridian, Forest County, Wisconsin, under contract with the U.S.D.A. Forest Service, using the section dimensions and subdivision data as provided by the Forest Service.

The Plat Map and notes herewith are a correct representation of the land surveyed and subdivided. I have surveyed and subdivided said section in accordance with the rules for survey of the public lands and with the Statutes of the State of Wisconsin.




Kim H Pritzlaff, RLS No. 1259
AARON ASSOCIATES
Oconto Falls, Wisconsin

Plat ready for filing:


District Ranger

Date of Survey: 1995

