

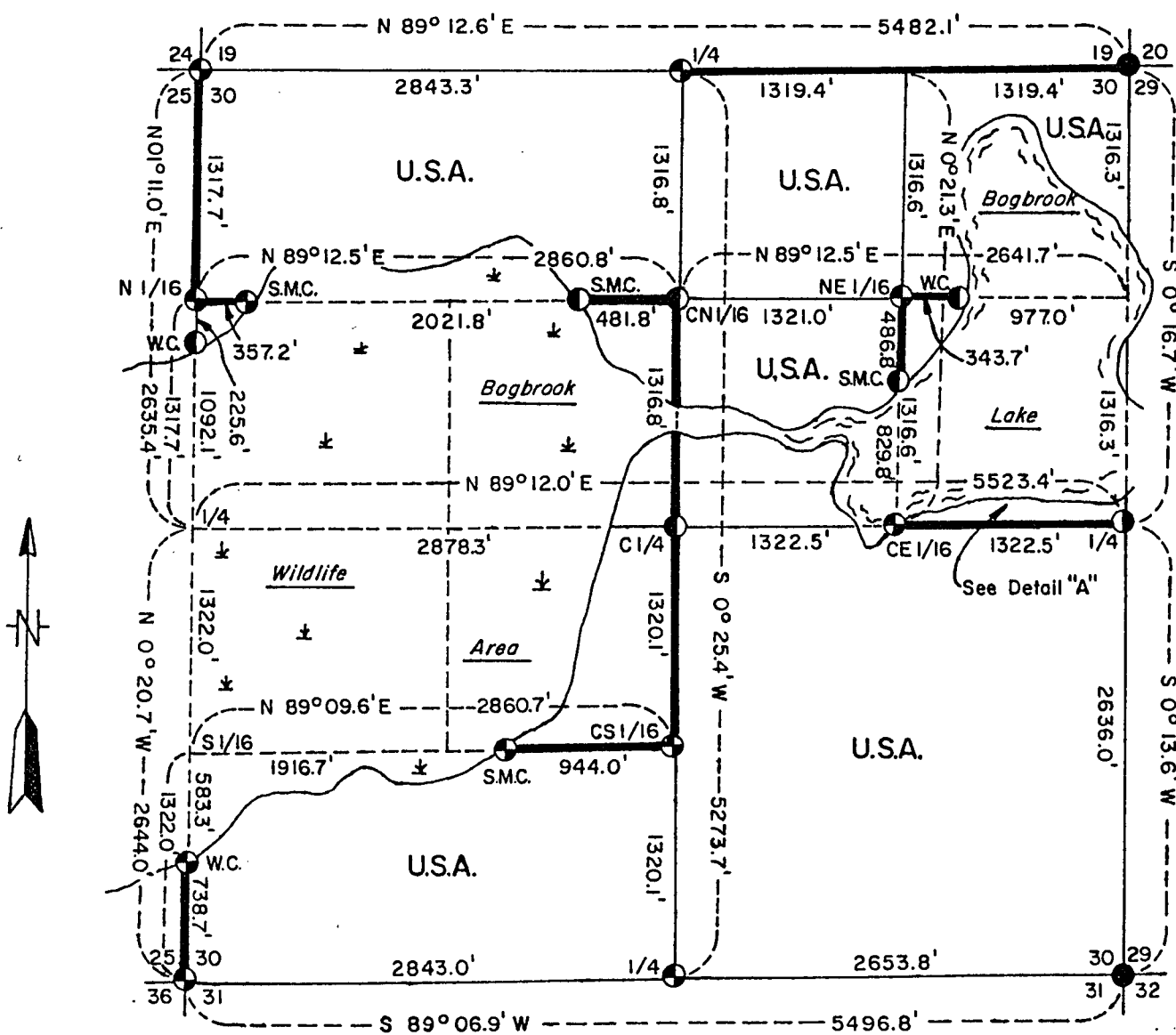
Stock No. 26273

County Clerk

SHEET 1 OF 7

PLAT OF SURVEY U.S. GOVERNMENT LAND

Being the SE1/4, S1/2 SW1/4, N1/2 NW1/4, NE1/4 NE1/4, NW1/4 NE1/4,
and SW1/4 NE1/4 All In Section 30
Township 34 North, Range 14 East, Fourth Principal Meridian
FOREST COUNTY, WISCONSIN



LEGEND

- ① 1 1/4" Iron Pipe with Witness Corner
- ⊕ 2" Diameter Aluminum Monument, 36" Long
- 2" Diameter Aluminum Monument, 60" Long
- 2" I.D., Galvanized Iron Pipe, 5 Foot Long, Concrete Filled, with Brass Cap.
- Marked Boundary Line of U.S. Government Land

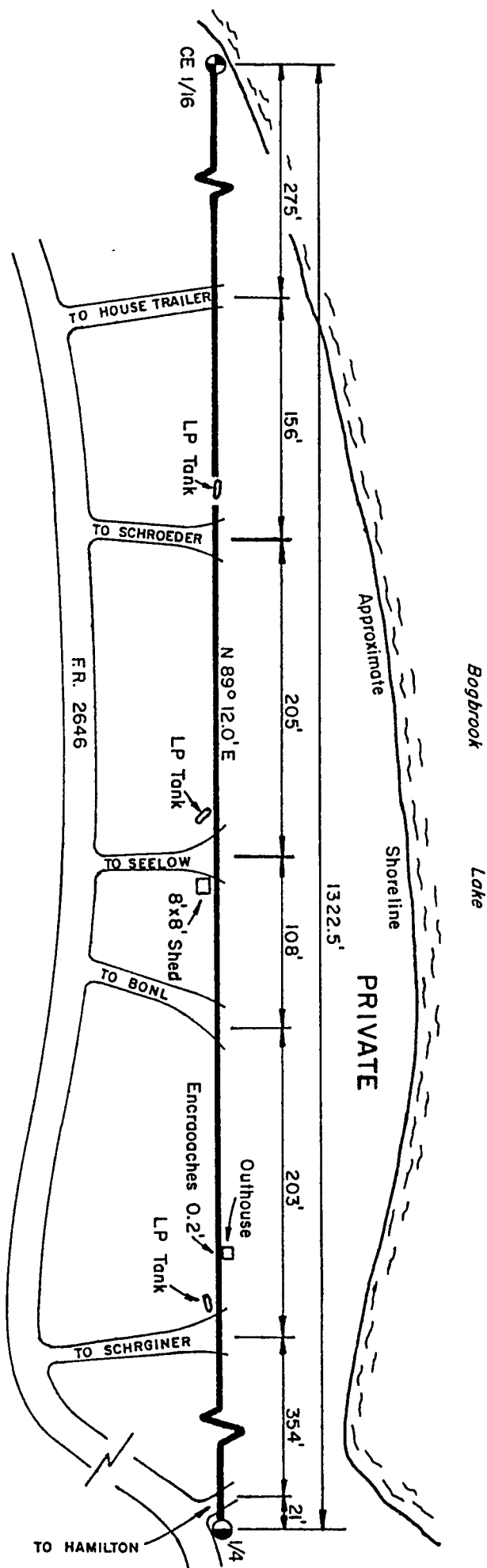
FOREST CO SURVEYOR
FILE # 341430-19841228
DATE _____ BY _____

Conversion Factors
Feet to Meters - 0.304801
Meters to Feet - 3.28083

Stock No. 26273

SHEET 2 OF 2

DETAIL "A"



Stock No. 26273

Sheet 3 of 7

SURVEY NOTES

This survey was made by the U. S. Department of Agriculture, Forest Service, for the purpose of restoring and establishing corners on the perimeter of Section 30, for establishing subdivisional corners within Section 30, and for locating and marking the boundaries of U. S. Government lands on their perimeter and within Section 30, Township 34 North, Range 14 East, Fourth Principal Meridian, Forest County, Wisconsin.

The U. S. Government lands in this section were acquired from 1935 to 1939.

The original government survey of the range line was established by Alfred Millard in August of 1857. Township 34 North, Range 14 East was subdivided by James McBride in August, 1859.

Subsequent surveys by Nathan Smith, 1910, John Hammes (county survey of unknown period), Genisot Engineering Surveyors--J. M. Abernathy, J. C. Kirby, and R. E. Badow in 1959, and Neal Sperhake in 1961, 1962, and 1964 are part of the history of surveys in this section. North Country Surveyors have failed to perform the proper subdivision of this section, and it has now been redone by the Forest Service through force account.

The control traverse for this survey was done by North Country Surveyors, and a relative accuracy of 1 part in 16,200 was achieved.

The bearings between corner positions are true bearings based on solar observations.

The corner positions recovered, restored, and established by this survey are marked by the monument described in the map legend.

The field notes of this survey and a copy of this plat are on file in the Forest Supervisor's Office at Rhinelander, Wisconsin.

CORNERS RECOVERED AND RESTORED

1. Section Corner to Sections 30 and 31, T.34N., R.14E. and Sections 25 and 36, T.34N., R.13E.

Corner position was restored from remains of the original bearing trees and a post hole.

Corner References:

Sugar Maple	8"	N.83°E.	44.67 feet
Sugar Maple	4"	S.41°E.	33.65 feet
Sugar Maple	4"	S.01°W.	12.40 feet
White Ash	8"	N.24°W.	10.70 feet
Steel Sign Post		South	1.10 feet
K.C. Monument		N.74°E.	31.84 feet

2. Section Corner to Sections 19 and 30, T.34N., R.14E. and Sections 24 and 25, T.34N., R.13E.

Corner position was restored from the remains of the original bearing trees and a fallen post and post point.

Corner References:

Sugar Maple	6"	N.60°E.	9.41 feet
Sugar Maple	6"	S.60°E.	9.66 feet
Sugar Maple	6"	S.50°W.	22.27 feet
Sugar Maple	8"	N.80°W.	16.55 feet
Steel Sign Post		North	2.80 feet
K.C. Monument		N.81°24'33"E.	72.80 feet

Stock No. 26273

Sheet 4 of 7

3. Section Corner to Sections 19, 20, 29, and 30, T.34N., R.14E.

Corner position found marked by a Forest Service monument. Certificate on file by Genisot Engineering, 1959, Document Number 82173.

Corner References:

Cedar	14"	N.15°E.	12.50 feet
Cedar	12"	N.20°E.	12.20 feet
Cedar	12"	S.56°E.	18.60 feet
Cedar	10"	N.62°W.	22.60 feet
Steel Sign Post		Southeast	1.50 feet

4. Section Corner to Sections 29, 30, 31, and 32, T.34N., R.14E.

Corner position found marked by a Forest Service monument. Certificate on file by Genisot Engineering, 1959.

Corner References:

Sugar Maple	26"	N.69°W.	17.29 feet
Sugar Maple	5"	S.81°W.	31.36 feet
Cross on Boulder (1.8' x 1.4')		N.7°E.	11.12 feet
Cross on Boulder (3.8' x 4.0')		S.30°E.	23.22 feet
Steel Sign Post		South	4.50 feet

5. Quarter Corner to Sections 29 and 30, T.34N., R.14E.

Corner position found marked by a 1½" x 36" iron pipe 6" below road surface. Certificate on file by Genisot Engineering, 1959.

Corner References:

White Birch	5"	S.55°E.	46.45 feet
Black Cherry	7"	S.68°W.	67.00 feet
Witness Corner (2" Iron Pipe/Brass Cap)		South	32.81 feet
Steel Sign Post		West	56.10 feet

6. Quarter Corner to Sections 30 and 31, T.34N., R.14E.

Corner position restored by single proportionate measure between the section corners east and west.

Corner References:

White Spruce	3"	N.12°E.	4.97 feet
White Spruce	4"	S.67°E.	19.36 feet
White Spruce	4"	S.79°W.	3.60 feet
Steel Sign Post		Southwest	3.70 feet

7. Quarter Corner to Sections 19 and 30, T.34N., R.14E.

Corner position restored by single proportionate measure between the section corners east and west.

Corner References:

Basswood	12"	N.83°E.	15.64 feet
Basswood	9"	S.24°E.	14.15 feet
Sugar Maple	5"	N.84°W.	59.37 feet
Steel Sign Post		North	1.90 feet

8. South Sixteenth to Sections 25 and 30, T.34N., R.13E. and T.34N., R.14E.

Corner position found marked by a 6" x 6" Cedar post. We established a witness corner on the range line, southerly, 583.27 feet.

Witness Corner References:

Balsam Fir	5"	N.89°E.	11.76 feet
Sugar Maple	12"	S.4°E.	9.74 feet
Balsam Fir	7"	N.74°W.	51.02 feet
Steel Sign Post		North	1.40 feet

Stock No. 26273

Sheet 5 of 7

CORNERS ESTABLISHED

1. Quarter Corner to Sections 25 and 30, T.34N., R.13E. and T.34N., R.14E.
 Corner position established by the extension of the range line from the section corner to Sections 25, 36, 30, and 31 northerly through the south sixteenth corner at distance (1321.94 feet) measured between these corners. We placed a witness corner N.01°11'01"E., 1092.09 feet.
 Witness Corner References:

White Spruce	12"	S.88°E.	29.19 feet
Cedar	10"	S.22°W.	9.00 feet
Cedar	8"	N.21°W.	40.69 feet
Steel Sign Post		Northeast	2.50 feet

2. Center Quarter Corner to Section 30, T.34N., R.14E.
 Corner established at the intersection of the one-quarter lines of Section 30.
 Corner References:

Tamarack	8"	N.10°E.	35.36 feet
Black Spruce	6"	N.87°E.	9.52 feet
Tamarack	10"	S.33°W.	44.83 feet
Steel Sign Post		North	2.00 feet
2" Iron Pipe with Brass Cap set by Genisot Engineering in 1959--		N.38°14'36"E.	27.31 feet

3. North Sixteenth to Sections 25 and 30, T.34N., R.13E. and T.34N., R.14E.
 Corner established at midpoint and on line between the section corner northerly and quarter corner southerly.
 Corner References:

Cedar	13"	S.89°E.	56.81 feet
Basswood	8"	S.51°W.	26.81 feet
Sugar Maple	6"	N.46°W.	15.54 feet
Steel Sign Post		East	2.10 feet

4. Center North Sixteenth Corner to Section 30, T.34N., R.14E.
 Corner established midpoint and on line between the center quarter corner and north quarter corner of Section 30.
 Corner References:

Balsam Fir	7"	N.83°E.	61.33 feet
Aspen	9"	S.60°W.	26.11 feet
White Spruce	12"	N.67°W.	18.67 feet
Steel Sign Post		South	5.10 feet

5. Center East Sixteenth Corner to Section 30, T.34N., R.14E.
 Corner established midpoint and on line between the center quarter corner and the east quarter corner of Section 30.
 Corner References:

Sugar Maple	4"	N.55°E.	20.45 feet
Sugar Maple	8"	S.88°E.	24.15 feet
Aspen	12"	S.38°E.	13.91 feet
Steel Sign Post		East	3.50 feet
Steel Sign Post		North	4.20 feet
2" Iron Pipe with Brass Cap set by Genisot Engineering in 1959--		N.21°21'49"E.	9.96 feet

Stock No. 26273

Sheet 6 of 7

6. Center South Sixteenth Corner to Section 30, T.34N., R.14E.

Corner established midpoint and on line between the center quarter corner and the south quarter corner of Section 30.

Corner References:

Aspen	10"	N.54°E.	68.95 feet
Sugar Maple	3"	S.45°W.	31.28 feet
Red Pine	6"	N.56°W.	73.83 feet
Steel Sign Post		West	1.50 feet

7. Northeast Sixteenth Corner to Section 30, T.34N., R.14E.

Corner established at the intersection of the north and east sixteenth lines to Section 30.

Corner References:

White Birch	10"	N.12°E.	17.90 feet
White Birch	7"	S.45°W.	12.92 feet
Black Cherry	8"	N.56°W.	30.96 feet
Steel Sign Post		East	1.30 feet

8. Special Meander Corner, West Shore of Bog Brook Flowage, on the North Sixteenth Line, Section 30, T.34N., R.14E.

Corner established on the north sixteenth line 357.22 feet easterly of north sixteenth corner to Sections 25 and 30.

Corner References:

Yellow Birch	8"	S.10°W.	17.10 feet
Cedar	8"	S.87°W.	8.29 feet
Cedar	10"	N.24°W.	21.61 feet
Steel Sign Post		West	1.30 feet

9. Special Meander Corner, East Shore of Bog Brook Flowage, on the North Sixteenth Line, Section 30, T.34N., R.14E.

Corner established on the north sixteenth line 481.82 feet westerly of the center north sixteenth corner to Section 30.

Corner References:

Black Spruce	4"	North	11.10 feet
Black Ash	7"	N.82°E.	54.72 feet
White Elm	6"	S.43°E.	6.10 feet
Steel Sign Post		West	2.20 feet

10. Special Meander Corner, North Shore of Bog Brook Lake, on the East Sixteenth Line to Section 30, T.34N., R.14E.

Corner established on the east sixteenth line 486.78 feet southerly of the northeast sixteenth corner to Section 30.

Corner References:

Black Ash	6"	East	11.02 feet
Black Ash	4"	S.47°W.	12.74 feet
Black Ash	8"	N.39°W.	18.42 feet
Steel Sign Post		East	1.30 feet

Stock No. 26273

Sheet 7 of 7

11. Witness Corner to the S 1/16 to Sections 25 and 30, on the East Shore of Bog Brook Flowage, on the South Sixteenth Line to Section 30, T.34N., R.14E.

Corner established on the south sixteenth line 1916.7 feet easterly of the south sixteenth corner to Sections 25 and 30.

Corner References:

Red Maple	5"	N.65°E.	35.63 feet
Aspen	12"	S.74°W.	9.24 feet
Balsam Fir	7"	N.24°W.	7.42 feet
Steel Sign Post		West	1.50 feet

12. Witness Corner to the N 1/16 to Sections 29 and 30, on the West Shore of Bog Brook Lake, on the North Sixteenth Line to Section 30.

Corner established on the north sixteenth line 977.00 feet westerly of the north sixteenth corner to Sections 29 and 30.

Corner References:

Balsam Fir	6"	N.54°E.	22.05 feet
Cedar	9"	S.68°W.	49.72 feet
Hemlock	4"	N.24°W.	18.28 feet
Steel Sign Post		West	3.10 feet

SURVEYOR'S AFFIDAVIT

State of Wisconsin]
County of Forest] SS

I, Milo E. Stefan, Cadastral Surveyor, U. S. Forest Service, and a registered surveyor in the State of Wisconsin, hereby certify that I have surveyed and subdivided Section 30, Township 34 North, Range 14 East, Fourth Principal Meridian, State of Wisconsin.

The plat map and the notes herewith are a correct representation of the land surveyed and divided. I have surveyed and subdivided said section in accordance with the rules for survey of the public lands and with the statutes of the State of Wisconsin.

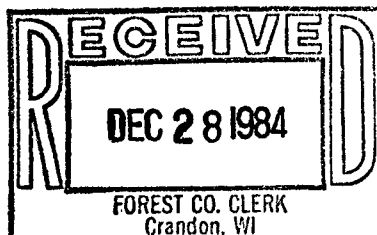


Milo E. Stefan
Cadastral Surveyor, U. S. Forest Service
R.L.S., State of Wisconsin
Certificate S-1558

Plat Ready For Filing:

Dale W. Staeger
District Ranger

Date of Survey: 1982 - 1984



Sarah L. Dean
Deputy Co. Clerk