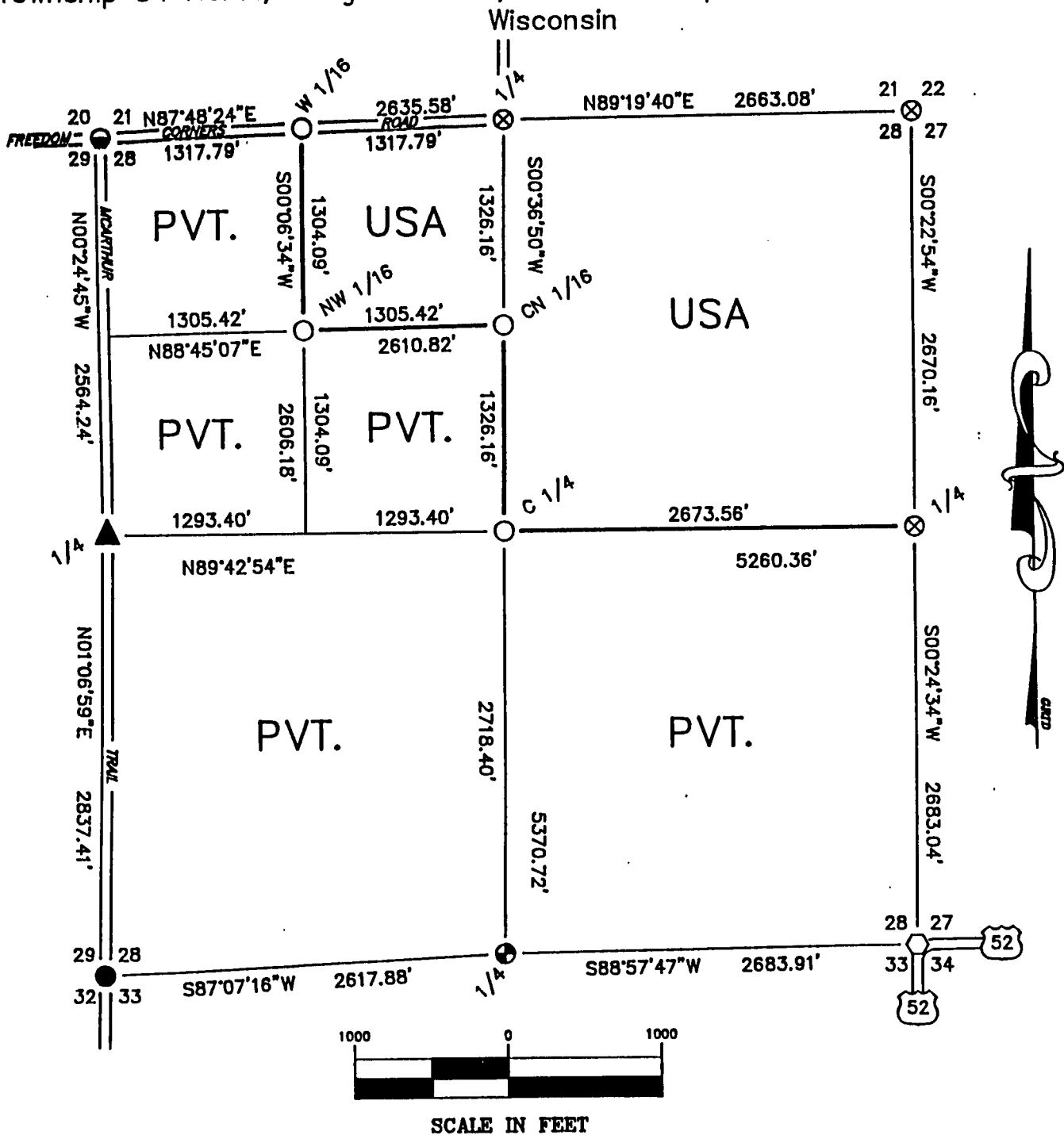


# PLAT OF SURVEY Sheet one of four

## U.S. GOVERNMENT LAND

Being the NE 1/4 and the NE 1/4 of the NW 1/4 in Section 28,  
Township 34 North, Range 14 East, Fourth Principal Meridian, Forest County,  
Wisconsin



- = EXISTING 1" DIAMETER IRON PIPE WITH WITNESS CORNER
- ⊖ = EXISTING 2" DIAMETER IRON PIPE WITH BRASS CAP STAMPED FOR CORNER
- ⊗ = EXISTING 2 1/2" DIAMETER ALUMINUM MONUMENT WITH CAP STAMPED FOR CORNER
- ⬡ = EXISTING 2" DIAMETER AXEL SHAFT WITH WITNESS CORNER
- ▲ = EXISTING RAILROAD SPIKE WITH WITNESS CORNER
- ⊕ = EXISTING 2" DIAMETER ALUMINUM BERNTSEN FOREST COUNTY MONUMENT
- = SET 1" DIAMETER ALUMINUM MONUMENT, 36" LONG WITH CAP STAMPED FOR CORNER
- = MARKED BOUNDARY LINES OF U.S. GOVERNMENT LAND

**SURVEY NOTES**

This survey was made by AARON ASSOCIATES of Oconto Falls, Wisconsin under contract with the U.S. Department of Agriculture, Forest Service for the purpose of restoring and establishing corners on the perimeter of Section 28, for establishing subdivisional corners within Section 28, and for locating and marking the boundaries of U.S. Government lands on their perimeter and within Section 28, Township 34 North, Range 14 East, 4th Principal Meridian, Forest County, Wisconsin.

The U.S. Government lands in Section 28 were acquired in 1936.

The original government survey of this township was made in 1859.

The corner positions recovered, restored, and established by this survey are marked by the monuments described in the map legend.

The corner positions established were located to an accuracy of one part in 3000.

The field notes and a copy of this plat map are on file in the Forest Supervisor's office at Rhinelander, Wisconsin.

Wisconsin North Zone Coordinates were computed from GPS observations and are based on 1983 North American datum.

The bearings between corner positions are Grid bearings based on the Wisconsin North Zone State Plane Coordinate System.

Conversions between grid bearings and true bearings are performed by the use of the following algebraic formula: True bearing - Convergence angle = Grid bearing. (Close attention to the algebraic sign must be observed, ie: +/- of the convergence angle).

Ground distances are shown on the Plat map. Conversion between Ground distance and Grid distance is performed by the following formula:

$$\text{Grid Distance} / (\text{Grid Scale Factor} \times (20,906,000 / (20,906,000 + \text{Mean Elev.}))) = \text{Ground Distance}$$

**COORDINATE VALUES ON 1983 N.A.D.**

Corner Code	North Latitude	West Longitude	Plane Coords.		Convergence Angle	Scale Factor
			North	East		
NE	45-24-28.27	88-44-21.48	90,517.553	2,292,296.970	00-54-34	1.000032613
SE	45-23-35.44	88-44-23.19	85,164.650	2,292,260.102	00-54-33	1.000036009
SW	45-23-34.48	88-45-37.46	84,984.599	2,286,962.139	00-53-39	1.000036071
NW	45-24-27.79	88-45-35.73	90,385.443	2,287,000.605	00-53-40	1.000032644
N 1/4	45-24-28.38	88-44-58.81	90,486.312	2,289,634.168	00-54-07	1.000032607
E 1/4	45-24-01.92	88-44-22.32	87,847.534	2,292,279.181	00-54-33	1.000034299
S 1/4	45-23-35-38	88-45-00.80	85,116.082	2,289,576.628	00-54-06	1.000036013
W 1/4	45-24-02.48	88-45-36.04	87,821.343	2,287,019.068	00-53-40	1.000034263
C 1/4	45-24-02.20	88-44-59.79	87,834.223	2,289,605.752	00-54-06	1.000034281
CN 1/16	45-24-15.29	88-44-59.30	89,160.267	2,289,619.960	00-54-07	1.000033442
NW 1/16	45-24-15.21	88-45-17.59	89,131.830	2,288,314.898	00-53-53	1.000033447
W 1/16	45-24-28.08	88-45-17.27	90,435.877	2,288,317.386	00-53-54	1.000032625

**CORNERS RECOVERED AND RESTORED**

- 1) Section Corner to Sections 21-22-27-28, T34N, R14E  
This corner position was found monumented by Al Harrison, RLS. Certificate on file in the Forest County courthouse.
- 2) Section Corner to Sections 27-28-33-34, T34N, R14E  
This corner position was found monumented by Al Harrison, RLS. Certificate on file in the Forest county courthouse.
- 3) Section Corner to Sections 28-29-32-33, T34N, R14E  
This corner position was found monumented by Al Harrison, RLS. Certificate on file in the Forest county courthouse.
- 4) Section Corner to Sections 20-21-28-29, T34N, R14E  
This corner position was found monumented by Al Harrison, RLS. Certificate on file in the Forest County courthouse.
- 5) Quarter Corner to Sections 21-28, T34N, R14E  
This corner position was found monumented by Al Harrison, RLS. Certificate on file in the Forest County courthouse.
- 6) Quarter Corner to Sections 27-28, T34N, R14E  
This corner position was found monumented by Al Harrison, RLS. Certificate on file in the Forest County courthouse.
- 7) Quarter Corner to Sections 28-33, T34N, R14E  
This corner position was found monumented by Al Harrison, RLS. Certificate on file in the Forest county courthouse.
- 8) Quarter Corner to Sections 28-29, T34N, R14E  
This corner position was found monumented by Al Harrison, RLS. Certificate on file in the Forest County courthouse.

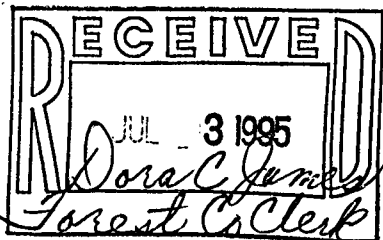
**CORNERS ESTABLISHED**

- 1) Center Quarter Corner to Section 28, T34N, R14E  
This corner position was set at the straight line intersection point of the north-south and east-west quarter lines of section 28. Corner references:

Maple	11"	N 44 E	10.57 ft.
Maple	10"	S 50 E	19.22 ft.
2" Iron Pipe		North	5.45 ft.
Steel Sign Post		East	0.60 ft.
- 2) Center-North Sixteenth Corner to Section 28, T34N, R14E  
This corner position was set at the midpoint and on line between the center quarter and north quarter corner of section 28. Corner references:

Maple	5"	N 47 E	20.98 ft.
Maple	9"	S 57 E	18.92 ft.
Steel Sign Post		South	0.90 ft.
- 3) Northwest Sixteenth Corner to Section 28, T34N, R14E  
This corner position was set at the straight line intersection point of the north-south and east-west sixteenth lines in the northwest quarter of section 28. Corner references:

Maple	9"	N 80 E	30.45 ft.
Maple	5"	S 25 E	7.45 ft.
1" Iron Pipe		S 52 E	17.97 ft.
Steel Sign Post		East	1.00 ft.



4) West Sixteenth Corner to Sections 21-28, T34N, R14E

This corner position was set at midpoint and on line between the north quarter and northwest corner of section 28. Corner references: Corner is a railroad spike in road centerline.

Maple (2)	13"	S 05 E	30.25 ft.
Maple (3)	10"	S 24 W	44.87 ft.
Witness Corner		South	34.00 ft.
Steel Sign Post		South	35.00 ft.

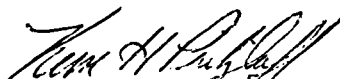
**SURVEYOR'S AFFIDAVIT**

STATE OF WISCONSIN)  
FOREST COUNTY )SS

I, Kim H Pritzlaff, State of Wisconsin Registered Land Surveyor No. 1259, do hereby certify: that I have surveyed and subdivided Section 28, Township 34 North, Range 14 East, Fourth Principal Meridian, Forest County, Wisconsin, under contract with the U.S.D.A. Forest Service, using the section dimensions and subdivision data as provided by the Forest Service.

The Plat Map and notes herewith are a correct representation of the land surveyed and subdivided. I have surveyed and subdivided said section in accordance with the rules for survey of the public lands and with the Statutes of the State of Wisconsin.



  
Kim H Pritzlaff, RLS No. 1259  
AARON ASSOCIATES  
Oconto Falls, Wisconsin

Plat ready for filing:

  
District Ranger

Date of Survey: 1995

