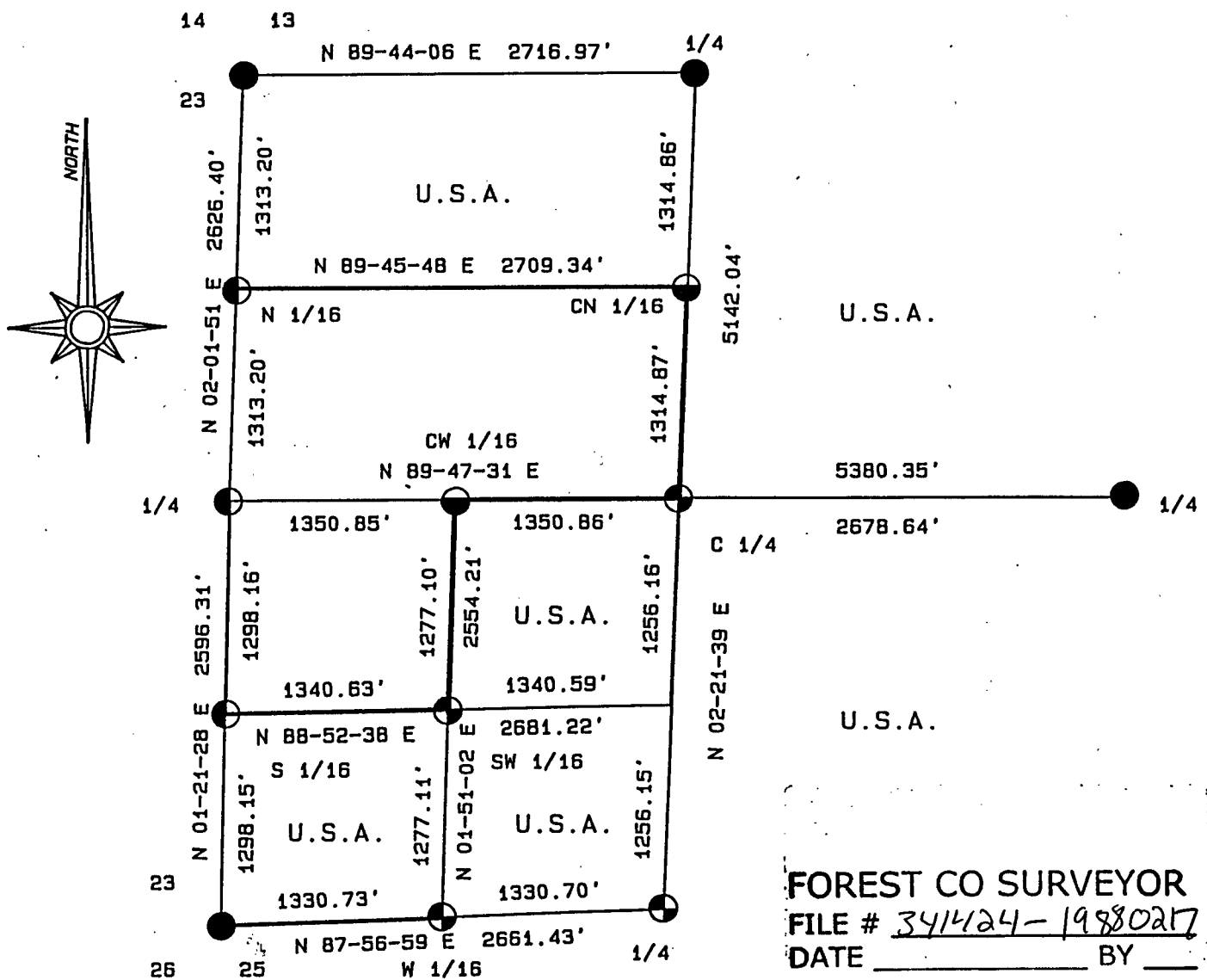
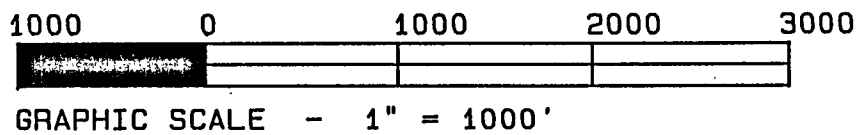


SHEET 1 OF 4

BEING THE N.E. 1/4; S.E. 1/4; EAST 1/2 AND S.W. 1/4,
S.W. 1/4; AND NORTH 1/2, N.W. 1/4; SECTION 24, TOWNSHIP 34 NORTH,
RANGE 14 EAST, FOURTH PRINCIPAL MERIDIAN,
FOREST COUNTY, WISCONSIN.



- 2 1/2" ALUMINUM MONUMENT FOUND IN PLACE.
- ⊕ 2 1/2" X 36" ALUMINUM MONUMENT SET THIS SURVEY.
- ◐ 2 1/2" X 60" ALUMINUM MONUMENT SET THIS SURVEY.
- R.R. SPIKE IN ROAD SURFACE SET THIS SURVEY.
- MARKED BOUNDARY LINE OF U.S. GOVERNMENT LANDS.

Stock No. 26273

Sheet 2 of 4

SURVEY NOTES

This survey was made by the U. S. Department of Agriculture, Forest Service, for the purpose of restoring and establishing corners on the perimeter of Section 24, for establishing subdivisional corners within Section 24, and for locating and marking the boundaries of U. S. Government land on their perimeter and within Section 24, Township 34 North, Range 14 East, Fourth Principal Meridian, Forest County, Wisconsin.

The U. S. Government lands in this section were acquired in 1935, 1938, and 1939.

The original Government subdivision survey of this township was made in 1859.

The corner positions recovered, restored, and established by this survey are marked by the monument described in the map legend.

The corner positions established were located to an accuracy of one part in 3000.

The bearings between corner positions are true bearings as determined by solar observations.

The field notes of this survey and a copy of this plat are on file in the Forest Supervisor's Office at Rhinelander, Wisconsin.

CORNERS RECOVERED OR RESTORED

1. Corner Common to Sections 13, 14, 23, and 24.
Corner previously recovered by M. Stefan, R.L.S. Certificate on file in Forest county.

2. Corner Common to Sections 23, 24, 25, and 26.
Corner previously recovered by T. Arnott, R.L.S. Certificate on file in Forest County.
New Corner References:

Spruce	5"	N.73°E.	25.94	feet
Spruce	4"	S.51°E.	6.92	feet
Tamarack	7"	S.28°W.	31.96	feet
Tamarack	5"	N.10°W.	7.54	feet
Steel Sign Post		West	0.74	feet

3. Quarter Corner Common to Sections 13 and 24.
Corner previously recovered by M. Stefan, R.L.S. Certificate on file in Forest County.

4. Quarter Corner Common to Sections 24 and 19.
Corner previously recovered by M. Stefan, R.L.S. Certificate on file in Forest County.

5. Quarter Corner Common to Sections 24 and 25.
Corner restored through retracement of J. Melendy's and N. Smith's 1907 surveys of Section 25.
Corner References:

Sugar	6"	N.64°E.	29.94	feet
Sugar	12"	South	51.21	feet
Sugar	10"	N.75°W.	54.93	feet
Steel Sign Post		South	0.65	feet

Stock No. 26273

Sheet 3 of 4

6. Quarter Corner Common to Sections 23 and 24.

Corner restored through retracement of N. Smith's 1910 survey of Section 24.

Corner References:

Witness Corner			
2½" x 36" Monument	East	26.10	feet
Power Pole #3414-24W5	N.11°E.	205.13	feet
Aspen 5"	S.47°W.	29.79	feet
Aspen 7"	N.8°W.	87.49	feet
Steel Sign Post	East	26.94	feet

7. North Sixteenth Corner Common to Sections 23 and 24.

Corner restored through retracement of N. Smith's 1910 survey of Section 24 and in centerline of Rangeline Road off fence lines east and west.

Corner References:

Witness Corner			
2½" x 36" Monument	East	24.40	feet
Sugar 8"	N.60°E.	43.51	feet
Sugar 12"	S.82°E.	47.34	feet
Power Pole #3414-23E4	N.33°W.	39.39	feet
Steel Sign Post	East	23.60	feet

CORNERS ESTABLISHED1. Center Quarter Corner to Section 24.

Corner established at the intersection of the one-quarter lines of Section 24.

Corner References:

Sugar 12"	N.58°E.	15.39	feet
Red Oak 7"	S.23°E.	38.83	feet
White Ash 9"	N.60°W.	33.44	feet
Steel Sign Post	Southeast	0.48	feet

2. South One-Sixteenth to Sections 23 and 24.

Corner established midpoint and on line between the southwest corner and the west quarter corner of Section 24.

Corner References:

Witness Corner			
2½" x 36" Monument	East	31.48	feet
Aspen 10"	S.55°W.	27.02	feet
Aspen 7"	N.87°W.	28.27	feet
Steel Sign Post	East	30.80	feet

3. West One-Sixteenth to Sections 24 and 25.

Corner established midpoint and on line between the southwest corner and the south quarter corner of Section 24.

Corner References:

White Birch 9"	East	17.11	feet
Sugar 7"	S.33°E.	18.37	feet
Red Maple 5"	N.3°W.	28.41	feet
Steel Sign Post	Northeast	0.86	feet

Stock No. 26273

Sheet 4 of 4

4. Center North One-Sixteenth to Section 24.

Corner established midpoint and on line between the center quarter corner and the north quarter corner of Section 24.

Corner References:

Spruce	16"	N.86°E.	33.81 feet
Spruce	16"	S.29°W.	26.94 feet
Cedar	6"	N.18°W.	15.49 feet
Steel Sign Post		Northeast	0.93 feet

5. Center West One-Sixteenth to Section 24.

Corner established midpoint and on line between the center quarter corner and the west quarter corner of Section 24.

Corner References:

Spruce	5"	S.22°E.	14.40 feet
Spruce	4"	S.40°W.	13.73 feet
Spruce	6"	N.55°W.	11.13 feet
Steel Sign Post		Southeast	0.75 feet

6. Southwest One-Sixteenth to Section 24.

Corner established at the intersection of the south and west one-sixteenth lines of Section 24.

Corner References:

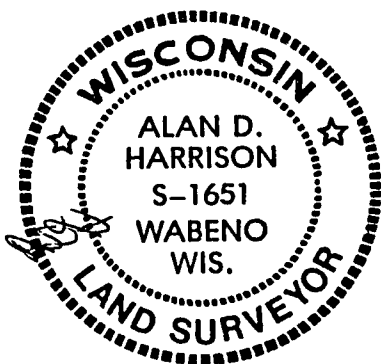
Sugar	4"	N.78°E.	23.45 feet
Cherry	5"	S.71°W.	33.91 feet
Sugar	5"	N.10°W.	69.10 feet
Steel Sign Post		Southeast	0.55 feet

SURVEYOR'S AFFIDAVIT

State of Wisconsin]
County of Forest] SS

I, Alan D. Harrison, Land Surveyor, USDA, Forest Service and a registered surveyor in the State of Wisconsin, hereby certify that I have surveyed and subdivided Section 24, Township 34 North, Range 14 East, Fourth Principal Meridian, State of Wisconsin.

The plat map and the notes herewith are a correct representation of the land surveyed and divided. I have surveyed and subdivided said section in accordance with the rules for survey of the public lands and with the statutes of the State of Wisconsin.



Alan D. Harrison
Land Surveyor, USDA, Forest Service
R.L.S., State of Wisconsin
Certificate S-1651

Plat ready for filing:

Dale S. Stange
District Ranger

Date of Survey: 1987

