

FOREST CO SURVEYOR

FILE # 341420-19780000

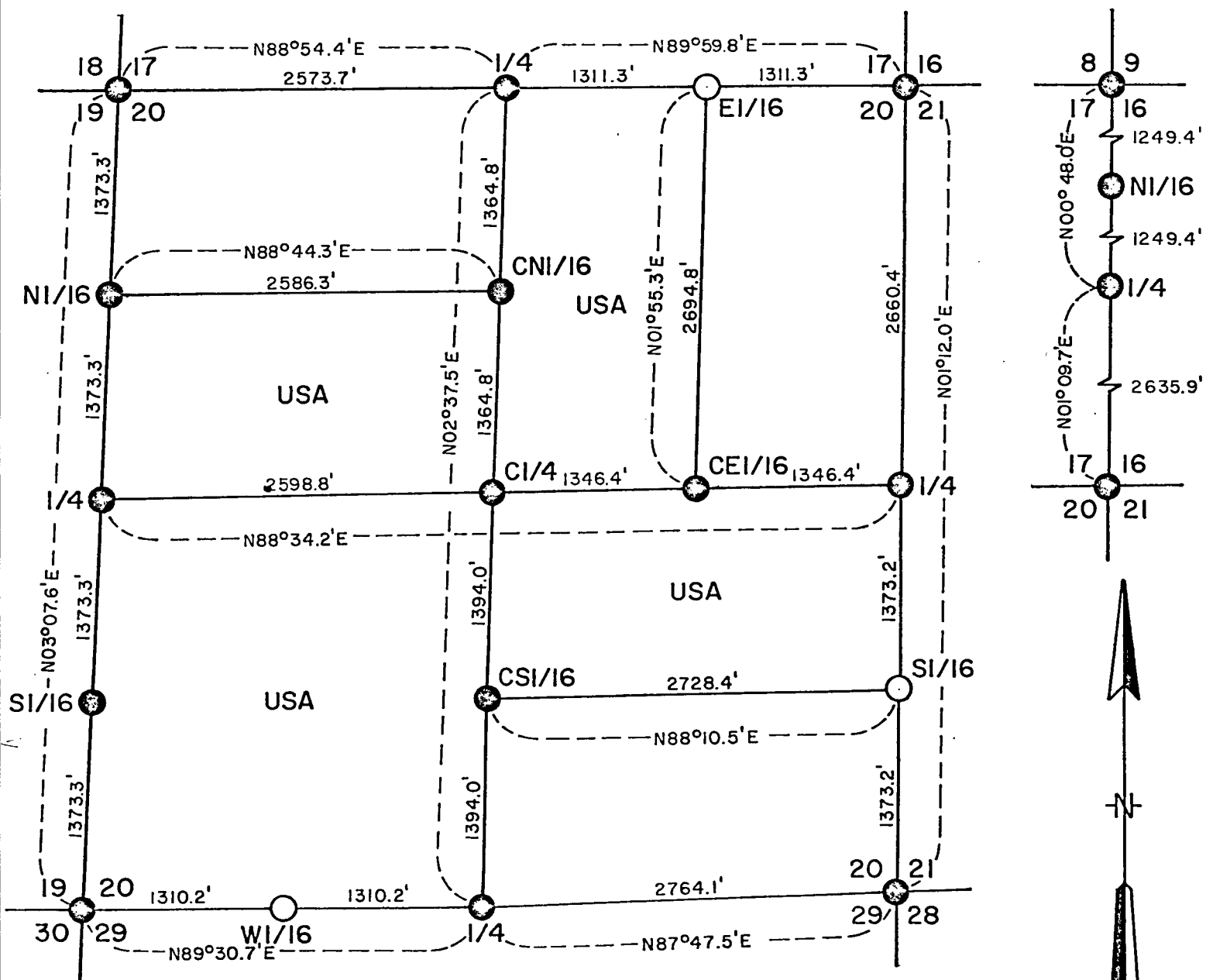
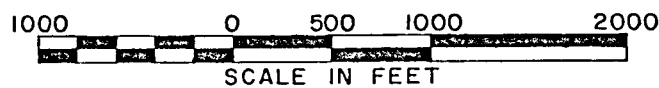
DATE \_\_\_\_\_ BY \_\_\_\_\_

sheet 1 of 6

# PLAT OF SURVEY

## U.S. GOVERNMENT LAND

Being SW1/4, SI/2NW1/4, WI/2NE1/4, and NI/2SE1/4 all in Section 20  
Township 34 North, Range 14 East, Fourth Principal Meridian  
FOREST COUNTY, WISCONSIN



### LEGEND

● Corner position marked by 2 inch inside diameter galvanized iron pipe capped with a 3 inch diameter brass tablet stamped to identify corner

○ As above except pipe and cap are aluminum

USA U.S. Government land

### CONVERSION FACTORS:

Feet to Meters - 0.30480

Meters to Feet - 3.280833

copy

SURVEY NOTES

This survey was made by the U. S. Department of Agriculture, Forest Service, for the purpose of establishing, marking and perpetuating the corners and boundary lines of U. S. Government land on the perimeter and within Section 20, Township 34 North, Range 14 East of the Fourth Principal Meridian, Forest County, Wisconsin as shown on the plat map herewith.

The original Government subdivision of this township was made by James McBride in 1859. Unrecorded surveys by N. H. Smith were made in 1910 and 1914. An assessor's plat of part of section 17 by H. A. Hall in 1946 is recorded as Document 65912. This information was used as evidence of corner locations.

The U. S. Government acquired title to the plat identified lands within Section 20 during the period 1935-1936.

The corner positions recovered and established by this survey are monumented by monuments described in the map legend.

The bearings between corner positions are true bearings as determined by solar observations near the SE corner of Section 20 and the NE corner of Section 17. The relative accuracy of the control traverse for corner establishment was one part in 10,000. This survey was done by field measurements to compare the results obtained by photogrammetric methods. The field survey notes and a copy of the plat of survey are on file in the Forest Supervisor's Office at Rhinelander, Wisconsin.

Corners Recovered and Restored1. Section Corner to Sections 8-9-16-17, T34N, R14E.

Recovered and monumented in 1964 and recorded as document Number 89306.

Ironwood 6"	N34°E	18.50 feet
Maple 6"	S20°E	19.10 feet
Maple 6"	S61°W	29.90 feet
Maple 7"	N55°W	45.82 feet

2. Section Corner to Sections 17-18-19-20, T34N, R14E.

Recovered and monumented in 1963 and recorded as document Number 88137.

Oak 4"	S70°E	5.93 feet
Maple 6"	S70°W	41.47 feet
Maple 8"	N54°W	26.67 feet

Southeast corner of block foundation of cabin bears N14°30'E, 60.94 feet.

3. Section Corner to Sections 16-17-20-21, T34N, R14E.

Corner recovered marked by square post and iron pipe in mound of rock from which a birch stump bears N27W, 29.6 feet and a birch stump bears N47E, 29.0 feet.

Yellow birch 9"	N81°E	21.19 feet
Maple 10"	S49°E	26.11 feet
Yellow birch 6"	S53°W	14.74 feet
Maple 6"	N22°W	25.54 feet
Sign post	East	1.0 feet

copy

4. Section Corner to Sections 19-20-29-30, T34N, R14E.

Corner recovered and monumented in 1959 and recorded as document Number 82173.

Cedar 6"	N64°W	22.6 feet
Cedar 10"	N11°E	12.5 feet
Cedar 7"	S59°E	18.3 feet

5. Section Corner to Sections 20-21-28-29, T34N, R14E.

Corner position was recovered as being at the center line of east-west road and road south with fence line north.

Corner References:

U.S.G.S. Bench Mark, TT31L, 1939 bears North 26.95 feet		
Northeast corner of Dry Klien, bears S37°W, 120.0 feet		
Basswood 8"	S31°E	97.69 feet

6. Quarter Corner to Sections 16-17, T34N, R14E.

Corner position found marked by a 4x4 scribed, squared post in mound of rock with a 1 inch iron pipe alongside of post. Edge of marsh bears north, 88 feet. Maple 6, bears S62E, 11.9 feet, blazed and scribed. Hemlock remains would check for original bearing tree locations. Distance North across marsh check original call.

Corner References:

Maple 9"	N63°E	10.33 feet
Maple 5"	N34°W	1.60 feet
Sign post	East	1.0 feet

7. Quarter Corner to Sections 17-20, T34N, R14E.

Corner position found marked by a PK nail in black top road. This point checks as having been established by H. A. Hall done in 1946 as shown on the assessor's plat.

Corner References:

Maple 10"	S64°E	36.77 feet
Maple 8"	S60°W	50.73 feet

8. Quarter Corner to Sections 20-29, T34N, R14E.

Corner position was restored from evidence found of N. H. Smith's surveys of 1910-1914 and road locations.

Corner References:

Cedar 6"	S37°W	52.37 feet
Spruce 15"	N85°W	61.66 feet
Aspen 14"	N48°W	27.33 feet

9. Quarter Corner to Sections 19-20, T34N, R14E.

Corner position was restored by proportional measurement on line and at midpoint between section corners.

Corner References:

Cherry 7"	S14°E	41.59 feet
Cherry 7"	S66°W	45.53 feet
Sign post	West	0.5 feet

*copy*

10. Quarter Corner to Sections 20-21, T34N, R14E.

Corner position was restored on line and at the distance recorded by the N. H. Smith surveys between section corners.

Corner References:

Aspen 7"	S18°E	64.32 feet
Maple 6"	S34°W	28.57 feet
Sign post	SW	0.5 feet

Corners Established1. Center Quarter Section 20, T34N, R14E.

Corner established at the intersection of straight line between opposite quarter corners.

Corner References:

Maple 14"	N54°E	45.17 feet
Maple 16"	S52°W	65.02 feet

2. East One Sixteenth Corner Between Sections 17-20, T34N, R14E.

Corner established on line and at midpoint between section corner and quarter corner.

Corner References:

W. Spruce 5"	S27°E	57.76 feet
W. Spruce 8"	S51°W	76.76 feet
Sign post	SW	0.3 feet

3. North One Sixteenth Corner Between Sections 19 & 20, T34N, R14E.

Corner established on line and at mid-point between section corner and quarter corner.

Corner References:

Maple 8"	S26°E	21.55 feet
Maple 7"	N46°W	27.62 feet
Sign post	South	0.5 feet

4. South One Sixteenth Corner Between Sections 19 & 20, T34N, R14E.

Corner established on line and at midpoint between section corner and quarter corner.

Corner References:

Aspen 8"	S80°E	17.23 feet
Cherry 8"	N 6°W	26.09 feet
Sign post	East	0.5 feet

5. South One Sixteenth Corner Between Sections 20 & 21, T34N, R14E.

Corner established on line and at midpoint between section corner and quarter corner.

Corner References:

Sign post	NW	0.5 feet
-----------	----	----------

No trees available. Corner is in bog area on the north side of Mud Lake.

6. West One Sixteenth Corner Between Sections 20 & 29, T34N, R14E.

Corner restored from cedar bearing tree set by N. H. Smith in 1914.

Corner References:

Cedar 12"	N51°E	65.39 feet
Cedar 8"	S19°W	54.43 feet
Sign post	East	0.5 feet

7. North One Sixteenth Corner Between Sections 16 & 17, T34N, R14E.

Corner established on line and at midpoint between section corner and quarter corner.

Corner References:

Maple 7"	S41°E	25.60 feet
Maple 7"	S43°W	19.09 feet
Sign post	NW	0.5 feet

8. North Center One Sixteenth Corner Section 20, T34N, R14E.

Corner established on line and at midpoint between north quarter corner and center quarter corner.

Corner References:

Maple 13"	S37°E	60.28 feet
Basswood 11"	S66°W	41.49 feet

9. East Center One Sixteenth Corner Section 20, T34N, R14E.

Corner established on line and at midpoint between east quarter corner and center quarter corner.

Corner References:

Maple 11"	N61°E	22.31 feet
Maple 11"	N22°W	22.65 feet
Sign post	SW	0.5 feet

10. South Center One Sixteenth Corner Section 20, T34N, R14E.

Corner established on line and at midpoint between north quarter corner and center quarter corner.

Corner References:

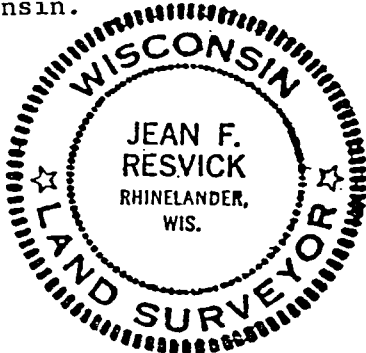
Maple 9"	N55°E	64.92 feet
Maple 6"	S62°W	67.77 feet
Maple 7"	N34°W	70.64 feet

sheet 6 of 6

SURVEYOR'S AFFIDAVIT

State of Wisconsin)  
County of Forest )<sup>ss</sup>

I, Jean F. Resvick, Land Surveyor, U. S. Forest Service, and a registered land surveyor in the State of Wisconsin, hereby certify that I have surveyed and subdivided section 20, township 34 north, range 14 east, Fourth Principal Meridian, Forest County, Wisconsin. The plat map and survey notes are a correct representation of the land surveyed and subdivided. I have surveyed and subdivided said section in accordance with the rules for the survey of the public lands and with the statutes of the State of Wisconsin.



*Jean F. Resvick*

Land Surveyor, U. S. Forest Service  
R.L.S. State of Wisconsin  
Certificate S-802

Date of Survey: 1978