

Stock No. 26273

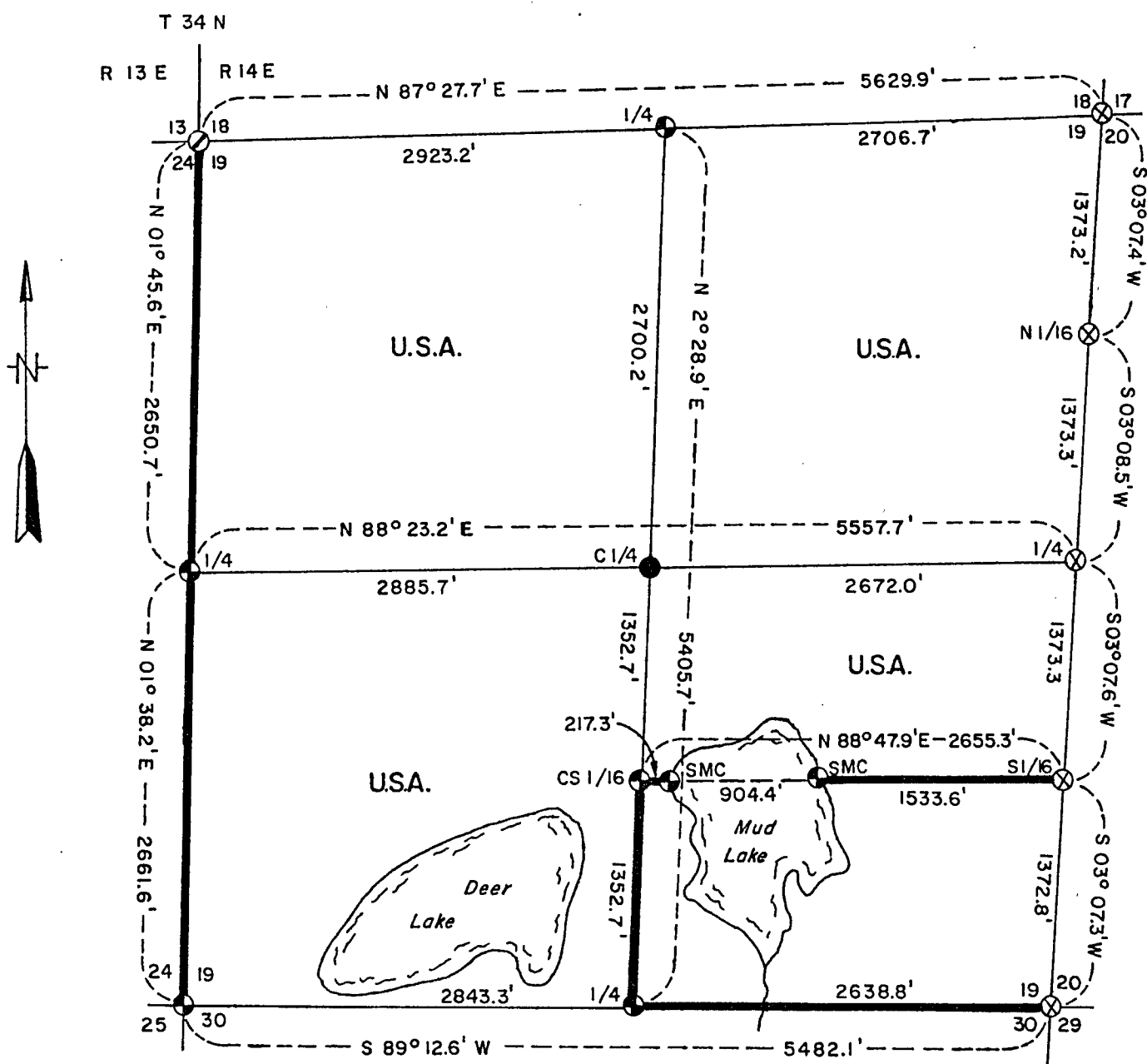
County Clerk

SHEET 1 OF 4

# PLAT OF SURVEY U.S. GOVERNMENT LAND

Being the North 1/2, SW1/4, and N1/2 SE1/4, All In Section 19  
Township 34 North, Range 14 East, Fourth Principal Meridian  
FOREST COUNTY, WISCONSIN

1000 0 1000  
SCALE IN FEET



## LEGEND

- ⊗ 2" Iron Pipe with 3" Brass Cap - Forest Service
- ⊕ 2" Diameter Aluminum Monument, 36" Long
- 2" Diameter Aluminum Monument, 60" Long
- 1" Iron Pipe with 4" Kimberly Clark Cap
- Marked Boundary Line of U.S. Government Land

FOREST CO SURVEYOR

FILE # 341419-19841228

DATE \_\_\_\_\_ BY \_\_\_\_\_

Conversion Factors  
Feet to Meters - 0.30  
Meters to Feet - 3.28

Stock No. 26273

Sheet 2 of 4

SURVEY NOTES

This survey was made by the U. S. Department of Agriculture, Forest Service, for the purpose of restoring and establishing corners on the perimeter of Section 19, for establishing subdivisional corners within Section 19, and for locating and marking the boundaries of U. S. Government lands on their perimeter and within Section 19, Township 34 North, Range 14 East, Fourth Principal Meridian, Forest County, Wisconsin.

The U. S. Government lands in this section were acquired in 1935.

The original government survey of the range line was established by Alfred Millard in 1857. Township 34 North, Range 14 East was subdivided by James McBride in August of 1859.

Subsequent surveys were conducted by Neal Sperhake for Kimberly Clark Corporation in 1961 - 1964 along the range line. North Country Surveyors have failed to perform the proper subdivision of this section; therefore, it has been reworked by the Forest Service. Section 20, to the east, was surveyed by the Forest Service in 1977 - 1978.

The control traverse for this survey was done by North Country Surveyors, and a relative accuracy of 1 part in 18,400 was achieved.

The bearings between corner positions are true bearings based on solar observations.

The corner positions recovered, restored, and established by this survey are marked by the monument described in the map legend.

The field notes of this survey and a copy of this plat are on file in the Forest Supervisor's Office at Rhinelander, Wisconsin.

CORNERS RECOVERED AND RESTORED

1. Section Corner to Sections 19 and 30, T.34N., R.14E. and Sections 24 and 25, T.34N., R.13E.

Corner position was restored from the remains of the original bearing trees and a fallen post and post point.

Corner References:

Sugar Maple	6"	N.60°E.	9.41 feet
Sugar Maple	6"	S.60°E.	9.66 feet
Sugar Maple	6"	S.50°W.	22.27 feet
Sugar Maple	8"	N.80°W.	16.55 feet
Steel Sign Post		North	2.80 feet
K.C. Monument		N.81°24'33"E.	72.80 feet

2. Section Corner to Sections 18 and 19, T.34N., R.14E. and Sections 13 and 24, T.34N., R.13E.

Corner position was restored from original evidence by Neal Sperhake in 1961. Certificate on file.

Corner References:

Sugar Maple	6" (*8")	N.53°W. (*N.52°W.)	30.46 (*29.88) feet
White Elm	6" (*8")	S.44°W. (*S.53°W.)	7.92 (* 7.73) feet
White Ash	6" (*6")	N.33°E. (*N.30°E.)	22.44 (*22.35) feet
Maple	5" (*5")	S.54°E. (*S.51°E.)	7.92 (* 7.78) feet
Above are Sperhake's references of 1961 and (*Winat's references of 1982).			
Steel Sign Post		North	1.00 feet

Stock No. 26273

Sheet 3 of 4

3. Section Corner to Sections 17, 18, 19, and 20, T.34N., R.14E.  
Corner position found marked by a Forest Service monument.  
Certificate on file.
4. Section Corner to Sections 19, 20, 29, and 30, T.34N., R.14E.  
Corner position found marked by a Forest Service monument.  
Certificate on file by Genisot Engineering, 1959, Document  
Number 82173.
5. Quarter Corner to Sections 19 and 24, T.34N., R.13E. and R.14E.  
Corner position restored from remains of the original bearing tree  
and post hole.  
Corner References:
- |                 |    |               |            |
|-----------------|----|---------------|------------|
| Sugar Maple     | 8" | N.87°E.       | 10.50 feet |
| Sugar Maple     | 6" | S.48°W.       | 23.16 feet |
| Sugar Maple     | 5" | N.89°W.       | 13.56 feet |
| Steel Sign Post |    | South         | 1.20 feet  |
| K.C. Monument   |    | S.67°26'42"E. | 37.11 feet |
6. Quarter Corner to Sections 18 and 19, T.34N., R.14E.  
Corner position restored by single proportionate measure from section  
corners east and west.  
Corner References:
- |                 |     |           |           |
|-----------------|-----|-----------|-----------|
| Basswood        | 12" | N.82°W.   | 6.47 feet |
| Basswood        | 6"  | N.5°E.    | 6.21 feet |
| Basswood        | 6"  | S.69°E.   | 6.40 feet |
| Steel Sign Post |     | Northwest | 3.10 feet |
- Monument set by North Country Surveyors.
7. Quarter Corner to Sections 19 and 20, T.34N., R.14E.  
Corner position found marked by a Forest Service monument by Resvick in  
1978.  
Corner References:
- |                 |    |         |            |
|-----------------|----|---------|------------|
| *Black Cherry   | 7" | S.14°E. | 41.59 feet |
| *Black Cherry   | 7" | S.66°W. | 45.53 feet |
| Sugar Maple     | 5" | N.52°W. | 31.76 feet |
| Steel Sign Post |    | West    | 0.50 feet  |
- \*By Resvick - 1978
8. Quarter Corner to Sections 19 and 30, T.34N., R.14E.  
Corner position restored by single proportionate measure between the  
sections east and west.  
Corner References:
- |                 |     |         |            |
|-----------------|-----|---------|------------|
| Basswood        | 12" | N.83°E. | 15.64 feet |
| Basswood        | 9"  | S.24°E. | 14.15 feet |
| *Sugar Maple    | 5"  | N.84°W. | 59.37 feet |
| Steel Sign Post |     | North   | 1.90 feet  |
- \*New bearing tree by North Country Surveyors.

CORNERS ESTABLISHED

1. Center Quarter Corner to Section 19, T.34N., R.14E.  
Corner established at the intersection of the one-quarter lines of  
Section 19.  
Corner References:
- |                 |     |           |            |
|-----------------|-----|-----------|------------|
| Black Spruce    | 4"  | N.62°E.   | 32.92 feet |
| White Birch     | 12" | S.31°E.   | 32.37 feet |
| Black Spruce    | 5"  | N.7°W.    | 30.67 feet |
| Steel Sign Post |     | Northwest | 1.90 feet  |

Stock No. 26273

Sheet 4 of 4

2. Center South Sixteenth Corner to Section 19, T.34N., R.14E.

Corner established midpoint and on line between the center quarter corner and south quarter corner to Section 19.

Corner References:

Sugar Maple	8"	N.18°E.	19.89 feet
Sugar Maple	7"	S.29°W.	14.15 feet
Sugar Maple	8"	N.72°W.	8.95 feet
Steel Sign Post		South	2.50 feet

3. Special Meander Corner, West Shore of Mud Lake, on the South Sixteenth Line, Section 19, T.34N., R.14E.

Corner established on the south sixteenth line, 217.38 feet east of the center south sixteenth corner to Section 19.

Corner References:

Basswood	14"	S.42°W.	17.20 feet
Sugar Maple	5"	N.59°W.	25.05 feet
Steel Sign Post		West	2.90 feet

4. Special Meander Corner, East Shore of Mud Lake, on the South Sixteenth Line, Section 19, T.34N., R.14E.

Corner established on the south sixteenth line, 1533.56 feet west of the south sixteenth to Sections 19 and 20.

Corner References:

Spruce	4"	N.55°W.	2.02 feet
Red Pine	8"	N.61°E.	9.86 feet
Steel Sign Post		East	2.30 feet

SURVEYOR'S AFFIDAVIT

State of Wisconsin ]  
County of Forest ] SS

I, Milo E. Stefan, Cadastral Surveyor, U. S. Forest Service, and a registered surveyor in the State of Wisconsin, hereby certify that I have surveyed and subdivided Section 19, Township 34 North, Range 14 East, Fourth Principal Meridian, State of Wisconsin.

The plat map and the notes herewith are a correct representation of the land surveyed and divided. I have surveyed and subdivided said section in accordance with the rules for survey of the public lands and with the statutes of the State of Wisconsin.

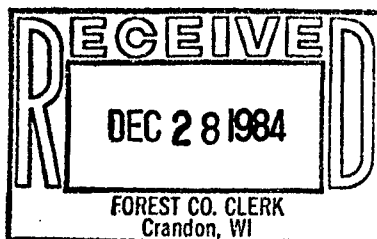


Date of Survey: 1982 - 1984

Milo E. Stefan  
Cadastral Surveyor, U. S. Forest Service  
R.L.S., State of Wisconsin  
Certificate S-1558

Plat Ready For Filing:

Dale B. Sturge  
District Ranger



Sallie L. Deer  
Deputy Co. Clerk