

Stock No. 26273

FOREST CO SURVEYOR

FILE # 341417-19861203

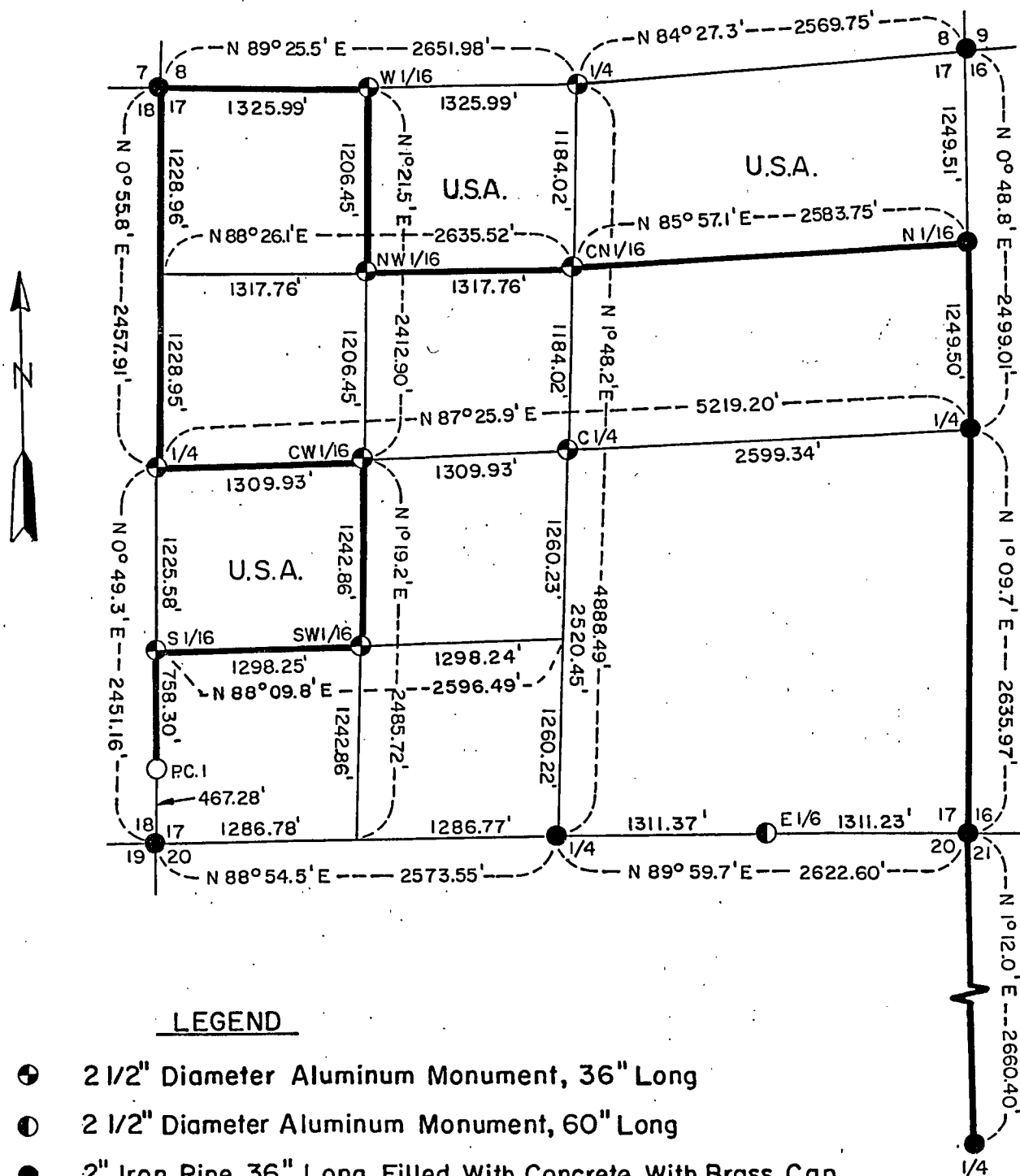
DATE _____ BY _____

SHEET 1 OF 4

PLAT OF SURVEY U.S. GOVERNMENT LAND

Being the N1/2, NE1/4; NW1/4, SW1/4; and NE1/4, NW1/4, Section 17
Township 34 North, Range 14 East, Fourth Principal Meridian
FOREST COUNTY, WISCONSIN

1000 0 1000
SCALE IN FEET



LEGEND

- ⊕ 2 1/2" Diameter Aluminum Monument, 36" Long
- ⊙ 2 1/2" Diameter Aluminum Monument, 60" Long
- 2" Iron Pipe 36" Long Filled With Concrete, With Brass Cap
- R.R. Spike in Blacktop Surface of Road
- Marked Boundary Line of U.S. Government Lands

Conversion Factor:
Feet to Meters-3.280833
Meters to Feet-0.304801

Stock No. 26273

Sheet 2 of 4

SURVEY NOTES

This survey was made by the U. S. Department of Agriculture, Forest Service, for the purpose of restoring and establishing corners on the perimeter of Section 17, for establishing subdivisional corners within Section 17, and for locating and marking the boundaries of U. S. Government land on their perimeter and within Section 17, Township 34 North, Range 14 East, Fourth Principal Meridian, Forest County, Wisconsin.

The U. S. Government lands in this section were acquired in 1936 and 1945.

The original Government subdivision survey of this township was made in 1859.

The corner positions recovered, restored, and established by this survey are marked by the monument described in the map legend.

The corner positions established were located to an accuracy of one part in 3000.

The bearings between corner positions are true bearings as determined by solar observations.

The field notes of this survey and a copy of this plat are on file in the Forest Supervisor's Office at Rhineland, Wisconsin.

CORNERS RECOVERED AND RESTORED

1. Corner to Sections 8, 9, 16, and 17, T.34N., R.14E.
Corner monumented by Jean Resvick, R.L.S. Certificate on file.
2. Corner to Sections 16, 17, 20, and 21, T.34N., R.14E.
Corner monumented by Jean Resvick, R.L.S. Certificate on file.
3. Corner to Sections 17, 18, 19, and 20, T.34N., R.14E.
Corner monumented by Jean Resvick, R.L.S. Certificate on file.
4. Corner to Sections 7, 8, 17, and 18, T.34N., R.14E.
Corner found monumented by 2" iron pipe with brass cap replacing scribed wood post, set by Jean Resvick.
Corner References:

White Ash	12"	N.56°E.	14.54 feet
Sugar	8"	S.65°E.	45.46 feet
White Ash	6"	S.26°W.	32.93 feet
Sugar	4"	N.63°W.	43.81 feet
Steel Sign Post		South	1.60 feet

5. Quarter Corner to Sections 16 and 17, T.34N., R.14E.
Corner monumented by Jean Resvick, R.L.S. Certificate on file.
6. Quarter Corner to Sections 17 and 20, T.34N., R.14E.
Corner monumented by Jean Resvick, R.L.S. Certificate on file.
7. Quarter Corner to Sections 17 and 18, T.34N., R.14E.
Corner found marked by 1 1/2" iron pipe which fits swamp call north.
Corner References:

Red Oak	14"	N.70°E.	15.90 feet
Red Oak	12"	S.42°W.	17.24 feet
Sugar	6"	N.22°W.	32.91 feet
Steel Sign Post		North	0.90 feet

Stock No. 26273

Sheet 3 of 4

8. Quarter Corner to Sections 8 and 17, T.34N., R.14E.

Corner position found marked by a rotted wood post and mound of rock from which the remains of the original BTs were found.

Corner References:

White Ash	6"	N.43°E.	13.65	feet
Sugar	6"	S.27°E.	19.96	feet
Sugar	6"	N.26°W.	19.03	feet
Steel Sign Post		Southwest	1.00	feet

9. North One-Sixteenth to Sections 16 and 17.

Corner established by Jean Resvick, R.L.S. Plat on file.

10. East One-Sixteenth to Sections 17 and 20.

Corner established by Jean Resvick, R.L.S. Plat on file.

CORNERS ESTABLISHED1. South One-Sixteenth to Sections 17 and 18.

Corner established midpoint and on line between the southwest corner and the west quarter corner of Section 17.

Corner References:

Sugar	5"	S.66°E.	13.83	feet
Sugar	4"	S.50°W.	37.40	feet
Sugar	9"	N.10°W.	7.42	feet
Steel Sign Post		East	2.00	feet
1 1/2" Iron Pipe		East	3.94	feet

2. West One-Sixteenth to Sections 8 and 17.

Corner established midpoint and on line between the northwest corner and the north quarter corner of Section 17.

Corner References:

Sugar	14"	N.30°E.	34.51	feet
White Ash	10"	S.13°E.	41.08	feet
Sugar	6"	S.87°W.	43.69	feet
Steel Sign Post		South	1.90	feet
Rock Pile with Post Hole		South	1.80	feet

3. Center North One-Sixteenth to Section 17.

Corner established midpoint and on line between the center quarter corner and the north quarter corner of Section 17.

Corner References:

Sugar	8"	S.4°E.	22.06	feet
Sugar	8"	S.81°W.	33.36	feet
Sugar	5"	N.53°W.	9.03	feet
Steel Sign Post		WSW	4.60	feet

4. Center West One-Sixteenth to Section 17.

Corner established midpoint and on line between the center quarter and the west quarter corner of Section 17.

Corner References:

Sugar	4"	S.87°E.	9.41	feet
Sugar	5"	S.19°E.	34.87	feet
Sugar	11"	N.35°W.	9.35	feet
Steel Sign Post		West	1.25	feet

Stock No. 26273

Sheet 4 of 4

5. Southwest One-Sixteenth to Section 17.

Corner established at the intersection of the south and west one-sixteenth lines of Section 17.

Corner References:

Yellow Birch	12"	N.57°E.	84.12 feet
Sugar	11"	S.73°W.	69.00 feet
Sugar	13"	N.84°W.	58.21 feet
Steel Sign Post		West	32.70 feet

6. Northwest One-Sixteenth to Section 17.

Corner established at the intersection of the north and west one-sixteenth lines of Section 17.

Corner References:

Sugar	6"	N.73°E.	26.22 feet
Sugar	9"	S.9°E.	30.27 feet
Sugar	6"	S.47°W.	31.74 feet
Steel Sign Post		East	0.80 feet

7. Property Corner Number 1, Sections 17 and 18.

Corner established 467.02 feet north of southwest corner and on the west section line of Section 17.

Corner References:

Witness Corner		North on Line	50.22 feet
Power Pole #3414-1851		N.22°E.	31.46 feet
Sugar	9"	N.61°W.	55.85 feet
Steel Sign Post		North	49.30 feet

8. Center Quarter Corner to Section 17.

Corner established at the intersections of the quarter lines to Section 17.

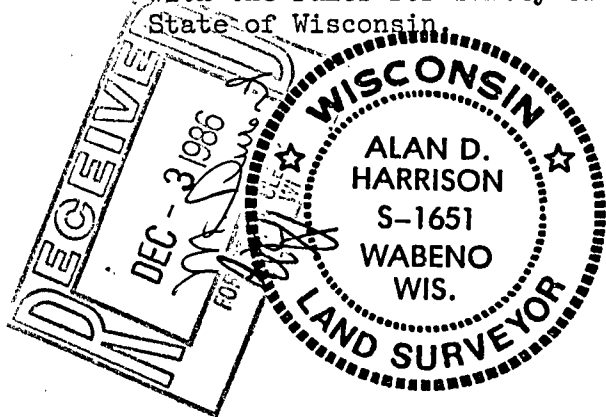
Corner References:

Sugar	8"	N.9°E.	59.19 feet
White Ash	6"	S.69°E.	52.78 feet
Sugar	6"	N.42°E.	33.26 feet
1" Iron Pipe		S.10°W.	11.37 feet
Steel Sign Post		Southwest	10.10 feet

SURVEYOR'S AFFIDAVITState of Wisconsin] SS
County of Forest]

I, Alan D. Harrison, Cadastral Surveyor, USDA, Forest Service, and a registered surveyor in the State of Wisconsin, hereby certify that I have surveyed and subdivided Section 17, Township 34 North, Range 14 East, Fourth Principal Meridian, State of Wisconsin.

The plat map and the notes herewith are a correct representation of the land surveyed and divided. I have surveyed and subdivided said section in accordance with the rules for survey of the public lands and with the statutes of the State of Wisconsin.



Alan D. Harrison
Cadastral Surveyor, USDA, Forest Service
R.L.S., State of Wisconsin
Certificate S-1651

Plat Ready For Filing:

Dale S. Stacey
District Ranger

Date of Survey: 1986