

Stock No. 26273

FOREST CO SURVEYOR

FILE # 341410-19960000

DATE _____ BY _____

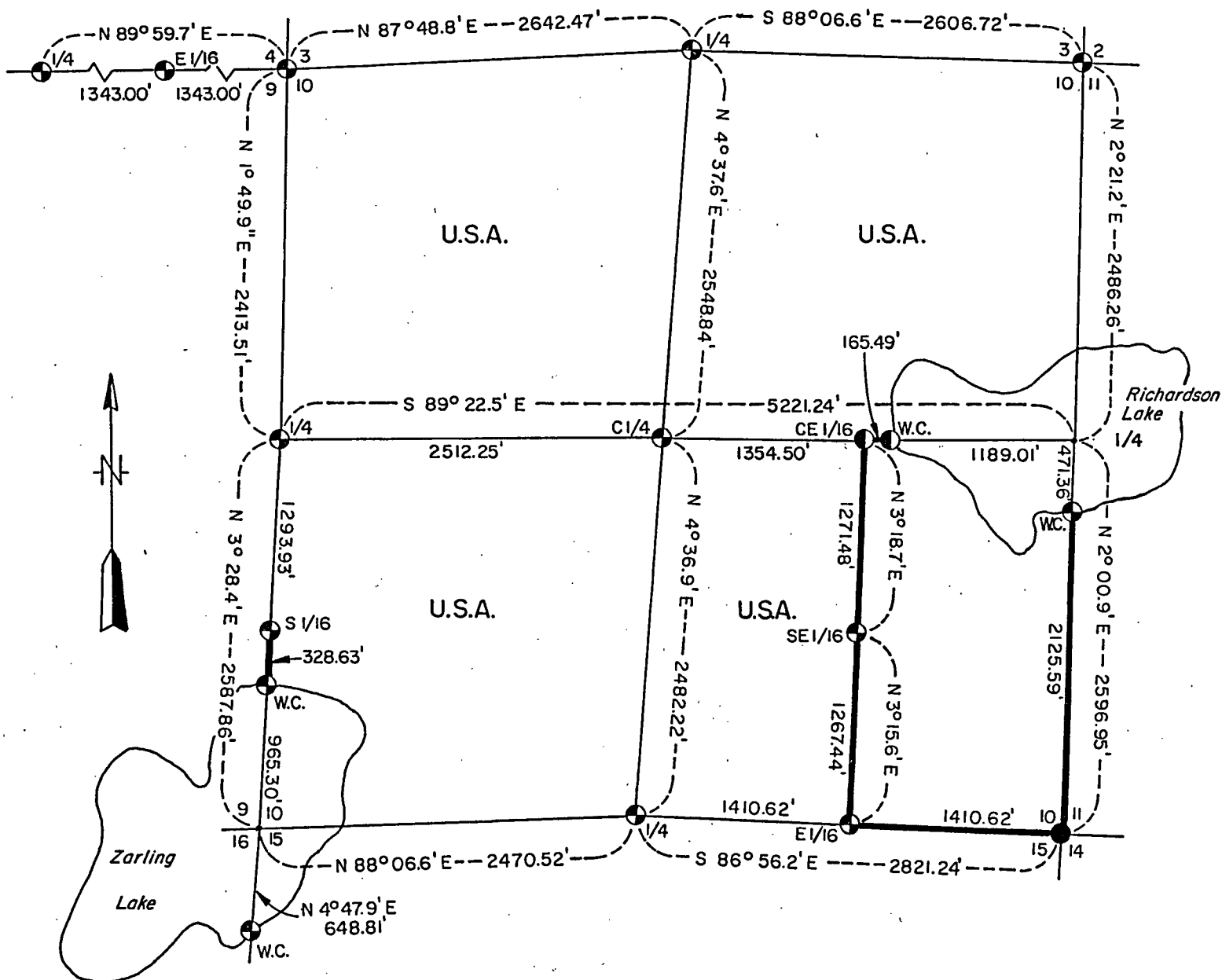
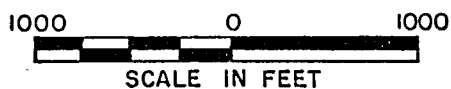
SHEET 1 OF 5

PLAT OF SURVEY U.S. GOVERNMENT LAND

Being the NE1/4; W1/2, SE1/4; SW1/4 and NW1/4, Section 10

Township 34 North, Range 14 East, Fourth Principal Meridian

FOREST COUNTY, WISCONSIN



LEGEND

- ⊕ 2 1/2" Aluminum Monument, 36" Long
- 2 1/2" Aluminum Monument, 60" Long
- Railroad Spike in Surface of Highway
- Marked Boundary Line of U.S. Government Lands

Conversion Factor:
Feet to Meters - 3.280833
Meters to Feet - 0.304801

Stock No. 26273

Sheet 2 of 5

SURVEY NOTES

This survey was made by the U. S. Department of Agriculture, Forest Service, for the purpose of restoring and establishing corners on the perimeter of Section 10, for establishing subdivisional corners within Section 10, and for locating and marking the boundaries of U. S. Government land on their perimeter and within Section 10, Township 34 North, Range 14 East, Fourth Principal Meridian, Forest County, Wisconsin.

The U. S. Government lands in this section were acquired in 1936, 1951, and 1982.

The original Government subdivision survey of this township was made in 1859.

The corner positions recovered, restored, and established by this survey are marked by the monument described in the map legend.

The corner positions established were located to an accuracy of one part in 3000.

The bearings between corner positions are true bearings as determined by solar observations.

The field notes of this survey and a copy of this plat are on file in the Forest Supervisor's Office at Rhinelander, Wisconsin.

CORNERS RECOVERED AND RESTORED

1. Corner to Sections 2, 3, 10, and 11, T.34N., R.14E.
Corner monumented by Milo Stefan, R.L.S. Certificate on file in Forest County.

2. Corner to Sections 10, 11, 14, and 15, T.34N., R.14E.
Corner restored at the intersection of the centerlines of State Highway 52 and County Highway W and off old fence line from north. Distances north and west fit well with N. Smith's 1905 survey.
Corner References:

Reference Monument (2" x 36")	North	40.00 feet
Reference Monument (2" x 36")	South	40.00 feet
Sugar 9"	N.26°E.	66.37 feet
Power Pole #3414-10R1	N.33°W.	42.81 feet
Steel Sign Post	North	39.00 feet

3. Corner to Sections 9, 10, 15, and 16, T.34N., R.14E.
Corner restored by retracement of N. Smith's 1909 survey on west line of Section 15 from west quarter through the north one-sixteenth. Section corner witnessed on north and south shores of Zarling Lake.
Corner References:

A. North Witness Corner	N.3°28.4'E.	965.30 feet
Sugar 8"	N.30°E.	13.30 feet
Sugar 8"	N.66°E.	19.20 feet
White Birch 12"	N.11°W.	11.60 feet
Steel Sign Post	North	1.00 feet
B. South Witness Corner	S.4°47.9'W.	648.81 feet
Sugar 4"	South	17.00 feet
Sugar 6"	S.48°W.	18.54 feet
Balsam 6"	S.88°W.	32.34 feet
Steel Sign Post	North	0.70 feet

Stock No. 26273

Sheet 3 of 5

4. Corner to Sections 3, 4, 9, and 10, T.34N., R.14E.

Corner restored by retracement of N. Smith's 1912 survey of the east half of the north section line of Section 9 from the north quarter corner through the east one-sixteenth corner.

Corner References:

Sugar	7"	N.25°E.	59.14	feet
Red Maple	5"	S.88°E.	10.48	feet
Sugar	8"	S.3°W.	16.61	feet
Sugar	7"	N.40°W.	42.93	feet
Steel Sign Post		Southwest	1.02	feet

5. Quarter Corner to Sections 10 and 11, T.34N., R.14E.

Corner restored by retracement of N. Smith's 1916 survey of Section 10 from the center quarter corner through the center east one-sixteenth corner extended on to Richardson Lake. Corner referenced by witness corners on the south and ~~west~~ side of lake.

Corner References:

A. Witness Corner		S.2°00.9'W.	471.36	feet
Hemlock	10"	S.45°E.	32.94	feet
Hemlock	9"	S.16°E.	35.52	feet
Hemlock	12"	S.54°W.	27.25	feet
Steel Sign Post		South	0.70	feet
B. Witness Corner		N.89°22.5'W.	1189.01	feet
Hemlock	15"	S.20°E.	30.09	feet
Red Maple	7"	S.66°W.	22.96	feet
Balsam	5"	N.50°W.	38.21	feet
Steel Sign Post		West	0.91	feet

6. Quarter Corner to Sections 10 and 15, T.34N., R.14E.

Corner restored by retracement of N. Smith's 1909 survey of Section 15 from the center quarter extended through the center north one-sixteenth. This position fits well with the distance to center quarter of Section 10 from Smith's 1916 survey of Section 10.

Corner References:

Balsam	5"	S.10°W.	31.17	feet
Steel Sign Post		East	1.11	feet
Steel Sign Post		Northwest	1.42	feet

7. Quarter Corner to Sections 9 and 10, T.34N., R.14E.

Corner restored by retracement of N. Smith's 1916 survey of Section 10 from center east one-sixteenth extended through the center quarter and at proportional distance to Smith's east-west quarter line.

Corner References:

Balsam	11"	N.19°E.	6.90	feet
Sugar	6"	S.74°W.	67.82	feet
Sugar	8"	N.55°W.	71.73	feet
Steel Sign Post		Southeast	0.74	feet

8. Quarter Corner to Sections 3 and 10, T.34N., R.14E.

Corner recovered from N. Smith's BT and metal location poster found on ground near corner position.

Corner References:

Sugar	8"	N.41°E.	45.25	feet
Sugar	7"	S.77°W.	23.79	feet
Sugar	7"	N.32°W.	63.54	feet
Steel Sign Post		Northeast	0.90	feet

Stock No. 26273

Sheet 4 of 5

9. Quarter Corner to Sections 4 and 9, T.34N., R.14E.

Corner monumented by Milo Stefan, R.L.S. Certificate on file in Forest County.

10. Center Quarter Corner to Section 10.

Corner found marked by a post point and stump of N. Smith's bearing trees from 1916 survey.

Corner References:

Sugar	6"	N.73°E.	2.83 feet
Sugar	3"	N.24°W.	3.72 feet
Steel Sign Post		Southwest	1.05 feet

11. Center East One-Sixteenth Corner to Section 10.

Corner found marked by a post hole and stumps of N. Smith's bearing trees from 1916 survey.

Corner References:

Spruce	4"	S.70°E.	15.47 feet
White Birch	10"	S.18°E.	15.61 feet
Spruce	4"	S.52°W.	20.18 feet
Steel Sign Post		South	0.65 feet

12. Southeast One-Sixteenth Corner to Section 10.

Corner found marked by a post hole and Sugar bearing tree--turned out, blazes visible, from N. Smith's 1916 survey of Section 10.

Corner References:

Sugar	9"	N.34°E.	18.52 feet
Sugar	7"	S.54°W.	19.34 feet
Sugar	9"	N.37°W.	35.10 feet
Steel Sign Post		South	0.80 feet

13. East One-Sixteenth Corner to Sections 4 and 9.

Corner found marked by a rotted post point and Birch bearing tree remains of N. Smith's 1912 survey.

Corner References:

Sugar	17"	S.76°W.	22.00 feet
Red Oak	15"	N.13°W.	54.08 feet
Steel Sign Post		South	0.82 feet

CORNERS ESTABLISHED1. East One-Sixteenth to Sections 10 and 15.

Corner established midpoint and on line between the southeast corner and the south quarter corner of Section 10.

Corner References:

Sugar	4"	S.20°W.	29.00 feet
White Ash	3"	N.70°W.	35.49 feet
Sugar	8"	S.47°W.	74.99 feet
Steel Sign Post		North	1.30 feet

2. South One-Sixteenth to Sections 9 and 10.

Corner established midpoint and on line between the southwest corner and the west quarter corner of Section 10.

Corner References:

Sugar	6"	S.11°E.	7.29 feet
Sugar	7"	S.59°W.	10.21 feet
Sugar	8"	N.57°W.	15.75 feet
Steel Sign Post		South	0.80 feet

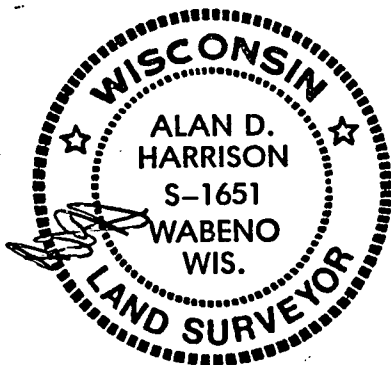
Stock No. 26273

Sheet 5 of 5

SURVEYOR'S AFFIDAVITState of Wisconsin] SS
County of Forest]

I, Alan D. Harrison, Cadastral Surveyor, USDA, Forest Service, and a registered surveyor in the State of Wisconsin, hereby certify that I have surveyed and subdivided Section 10, Township 34 North, Range 14 East, Fourth Principal Meridian, State of Wisconsin.

The plat map and the notes herewith are a correct representation of the land surveyed and divided. I have surveyed and subdivided said section in accordance with the rules for survey of the public lands and with the statutes of the State of Wisconsin.



Date of Survey: 1986

Cadastral Surveyor, USDA, Forest Service
R.L.S., State of Wisconsin
Certificate S-1651

Plat Ready For Filing:

District Ranger

