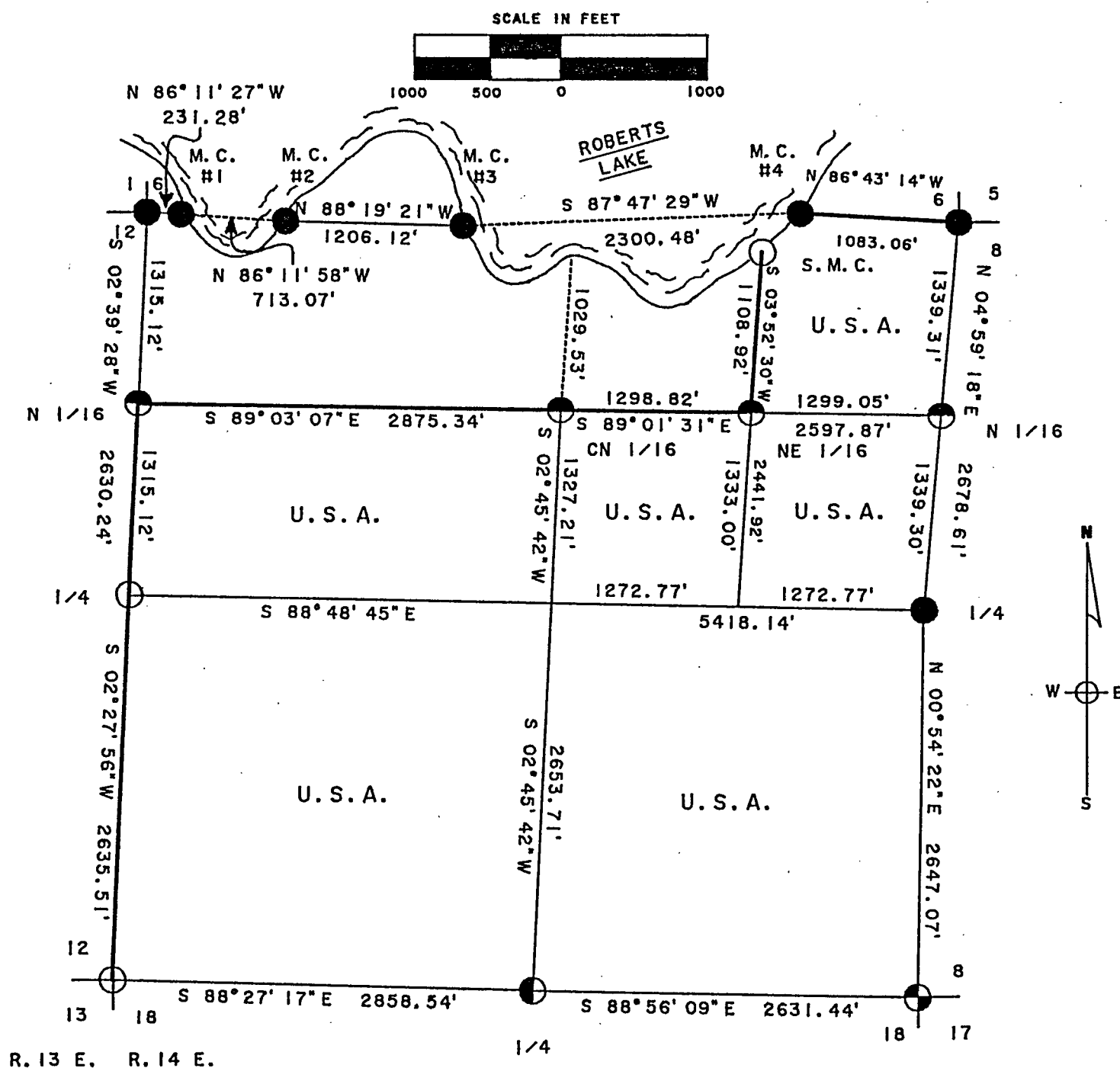


FOREST CO SURVEYOR
FILE # 341407 - 1998
DATE _____ BY _____

Sheet 1 of 5

BEING GOVERNMENT LOT 4; THE SOUTH 1/2, NE 1/4; THE S.E. 1/4;
THE S.W. 1/4 AND THE SOUTH 1/2, N.W. 1/4; SECTION 7;
TOWNSHIP 34 NORTH; RANGE 14 EAST; FOURTH PRINCIPAL MERIDIAN;
FOREST COUNTY, WISCONSIN.



LEGEND

- G.L.O. CONCRETE MONUMENT, FOUND IN PLACE.
- KIMBERLY CLARK MONUMENT, FOUND IN PLACE.
- ◐ 2" BRASS CAPPED MONUMENT, FOUND IN PLACE.
- ◑ 2 1/2" X 36" ALUMINUM MONUMENT, SET THIS SURVEY.
- ◒ 1" X 36" ALUMINUM MONUMENT, SET THIS SURVEY.
- MARKED BOUNDARY LINE OF U.S. GOVERNMENT LANDS.

Stock No. 26273

Sheet 2 of 5

SURVEY NOTES

This survey was made by the U. S. Department of Agriculture, Forest Service, for the purpose of restoring and establishing corners on the perimeter of Section 7, for establishing subdivisional corners within Section 7 and for locating and marking the boundaries of U. S. Government land on the perimeter and within Section 7, Township 34 North, Range 14 East, Fourth Principal Meridian, Forest County, Wisconsin.

The U. S. Government lands in this section were acquired in 1935 and 1957.

The original government subdivision survey of this township was made in 1857 and 1859. The north line of Section 7 was dependently resurveyed by G.L.O. in 1947.

The corner positions recovered, restored and established by this survey are marked by the monument described in the map legend.

The corner positions established were located to an accuracy of one part in 3000.

The bearings between corner positions are true bearings as determined by solar observations.

The field notes of this survey and a copy of this plat are on file in the Forest Supervisor's Office at Rhinelander, Wisconsin.

CORNERS RECOVERED OR RESTORED1. Corner Common to Sections 5, 6, 7 and 8.

Corner monumented by Hugh Crawford, G.L.O. Surveyor, in 1946. Certificate on file in Forest County by Wayne Dobbratz (RLS).

2. Corner Common to Sections 6, 7, 1 and 12.

Corner found marked by a G.L.O. brass capped monument set by Hugh Crawford, G.L.O. Surveyor, in 1946.

Corner References:

Dbl. Red Oak	27"	N.12°E.	21.33 feet (Crawford)
Sugar	11"	N.78°E.	29.28 feet
Sugar	9"	S.57°W.	28.68 feet (Crawford)
Sugar	8"	N.72°W.	13.99 feet (Crawford)
Steel Sign Post		Southeast	1.82 feet

3. Corner Common to Sections 7, 12, 13 and 18.

Corner found marked by a K-C monument by N. Sperhake (RLS). Certificate on file in Forest County.

4. Corner Common to Sections 7, 8, 17 and 18.

Corner found marked by a brass capped monument by Jean Resvick (RLS). Certificate on file in Forest County by Al Harrison (RLS).

5. Quarter Corner Common to Sections 7 and 12.

Corner found marked by a K-C monument by N. Sperhake (RLS). Certificate on file in Forest County.

Stock No. 26273

Sheet 3 of 5

6. Quarter Corner Common to Sections 7 and 18.

Corner recovered from evidence of a 1937 C.C.C. location poster and post hole locate from it.

Corner References:

Sugar	4"	N.60°E.	51.33 feet
Sugar	5"	S.21°E.	20.61 feet
Sugar	5"	S.73°W.	30.65 feet
Steel Sign Post		Northwest	0.79 feet

7. Quarter Corner Common to Sections 7 and 8.

Corner found marked by a G.L.O. brass capped monument set by Hugh Crawford, G.L.O. Surveyor, in 1946.

Corner References:

W. Birch	12"	N.11°E.	62.83 feet
R. Maple	7"	S.69°E.	36.15 feet
Y. Birch	8"	N.73°W.	20.88 feet (Crawford)
Steel Sign Post		Southwest	0.65 feet

8. West Meander Corner #1 Common to Sections 6 and 7.

Corner found marked by a G.L.O. brass capped monument set by Hugh Crawford, G.L.O. Surveyor, in 1946.

Corner References:

R. Oak	12"	S.39°W.	43.29 feet
Hemlock	8"	N.60°W.	24.84 feet
W. Birch	13"	N.28°W.	2.12 feet (Crawford)
Steel Sign Post		South	1.55 feet

9. East Meander Corner #1 Common to Sections 6 and 7.

Corner found marked by a G.L.O. brass capped monument set by Hugh Crawford, G.L.O. Surveyor, in 1946.

Corner References:

R. Maple	5"	N.20°E.	25.51 feet
R. Maple	13"	S.70°W.	5.80 feet (Crawford)
Cedar	10"	N.31°W.	8.98 feet (Crawford)
Steel Sign Post		South	1.30 feet

10. West Meander Corner #2 Common to Sections 6 and 7.

Corner found marked by a G.L.O. brass capped monument set by Hugh Crawford, G.L.O. Surveyor, in 1946.

Corner References:

Sugar	8"	S.05°E.	50.14 feet
Iron Pipe	1½"	S.85°W.	14.57 feet
R. Oak	18"	N.46°W.	34.30 feet (Crawford)
Steel Sign Post		West	1.88 feet

11. East Meander Corner #2 Common to Sections 6 and 7.

Corner found marked by a G.L.O. brass capped monument set by Hugh Crawford, G.L.O. Surveyor, in 1946.

Corner References:

W. Birch	16"	N.60°E.	53.20 feet (Crawford)
R. Maple	9"	S.38°W.	18.18 feet
R. Maple	6"	North	23.11 feet
Wood Sign Post		South	0.86 feet

Stock No. 26273

Sheet 4 of 5

CORNERS ESTABLISHED1. North One-Sixteenth Corner Common to Sections 7 and 12.

Corner established midpoint and on line between the Northwest corner and West quarter corner of section 17.

Corner References:

R. Maple	6"	N.18°E.	13.58 feet
R. Maple	6"	N.68°W.	15.45 feet
Steel Sign Post		Southeast	1.03 feet
K-C Monument		South	0.79 feet

2. Center-North One-Sixteenth Corner to Section 7.

Corner established proportionally on the North - South quarter line of Section 7.

Corner References:

Sugar	6"	S.30°E.	26.43 feet
Sugar	6"	S.54°W.	22.43 feet
Steel Sign Post		East	0.86 feet
Iron Pipe	1½"	West	56.85 feet

3. Northeast One-Sixteenth Corner to Section 7.

Corner established at the intersection of the North and East Sixteenth lines of Section 7.

Corner References:

Sugar	4"	S.12°E.	20.81 feet
Sugar	3"	S.30°W.	30.05 feet
Steel Sign Post		Southeast	0.86 feet
K-C Monument		S.88°W.	22.95 feet

4. Special Meander Corner #1, Section 7.

Corner established at the intersection of the East sixteenth line and the shore of Robert's Lake 1,108.92 feet north of the Northeast one-sixteenth corner.

Corner References:

Balsam	7"	N.80°E.	26.46 feet
Hemlock	9"	S.10°W.	29.29 feet
Steel Sign Post		South	2.89 feet
Iron Pipe	1½"	S.51°W.	30.32 feet

Stock No. 26273

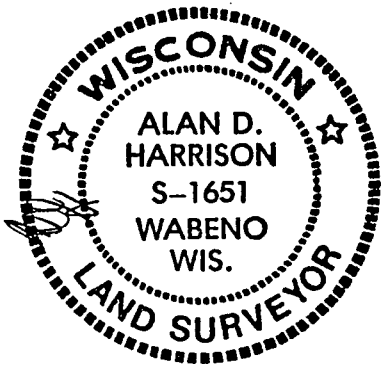
Sheet 5 of 5

SURVEYOR'S AFFIDAVIT

State of Wisconsin] SS
County of Forest]

I, Alan D. Harrison, Land Surveyor, U.S.D.A. Forest Service and a Registered Land Surveyor in the State of Wisconsin, do hereby certify that I have surveyed and subdivided Section 7, Township 34 North, Range 14 East, Fourth Principal Meridian, State of Wisconsin.

The plat map and the notes herewith are a correct representation of the land surveyed and divided. I have surveyed and subdivided said section in accordance with the rules for survey of the public lands and with the statutes of the State of Wisconsin.



Alan D. Harrison
LAND SURVEYOR, U.S.D.A. Forest Service
R.L.S. Number S-1651
State of Wisconsin

Plat ready for filing:

Pale B. Stange
District Ranger

Date of Survey: 1988

