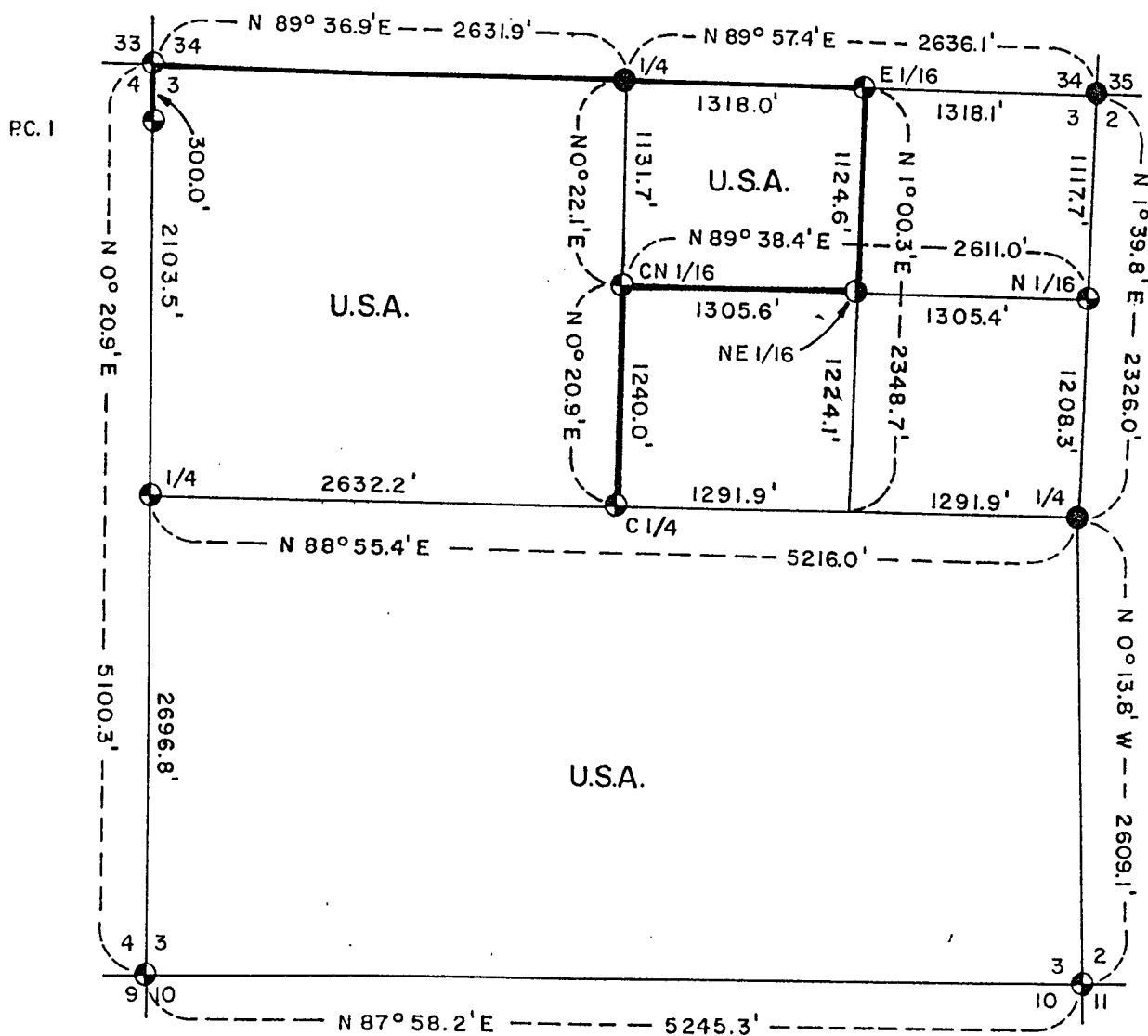


County  
Clerk

# PLAT OF SURVEY U.S. GOVERNMENT LAND

Being the NW1/4, NE1/4; S1/2 and NW1/4 Section 3  
Township 34 North, Range 14 East, Fourth Principal Meridian  
FOREST COUNTY, WISCONSIN



- 2" Iron Pipe with Brass Cap.
- ⊕ 2" Diameter Aluminum Monument 36" Long.
- ⦿ 2" Diameter Aluminum Monument 60" Long.
- Marked Boundary Lines of U.S. Government Lands.

FOREST CO SURVEYOR  
FILE # 341403-19841228  
DATE \_\_\_\_\_ BY \_\_\_\_\_

Conversion Factors:  
Feet to Meters – 0.304801  
Meters to Feet – 3.28033

Stock No. 26273

Sheet 2 of 4

SURVEY NOTES

This survey was made by the U. S. Department of Agriculture, Forest Service, for the purpose of restoring and establishing corners on the perimeter of Section 3, for establishing subdivisional corners within Section 3, and for locating and marking the boundaries of U. S. Government land on their perimeter and within Section 3, Township 34 North, Range 14 East, Fourth Principal Meridian, Forest County, Wisconsin.

The U. S. Government lands in this section were acquired in 1935 and 1947.

The original government subdivision survey of this township was made in 1857 and 1859.

The corner positions recovered, restored, and established by this survey are marked by the monument described in the map legend.

The corner positions established were located to an accuracy of one part in 3000.

The bearings between corner positions are true bearings as determined by solar observations.

The field notes of this survey and a copy of this plat are on file in the Forest Supervisor's Office at Rhinelander, Wisconsin.

CORNERS RECOVERED AND RESTORED1. Section Corner to Sections 2-3-10-11, T.34N., R.14E.

Corner position falls in centerline of town road. Iron pipe and wood post easterly 22 ft with CCC notes. Distance east fits with Nathan Smith's survey of 1925. Corner buried 12" below surface of road.

Corner References:

Red Maple	9"	N.48°E.	51.11	feet
White Pine	22"	S.39°E.	58.94	feet
Red Maple	10"	S.26°W.	57.75	feet
White Pine	23"	N.86°W.	38.01	feet
Steel Sign Post		East	20.10	feet

2. Section Corner to Sections 2-3-34-35, T.34-35N., R.14E.

See Corner Restoration Certificate, Document Number 88138.

3. Section Corner to Sections 3-4-34-33, T.34-35N., R.14E.

Corner position recovered from the remains of the original bearing tree stumps.

Corner References:

Spruce	6"	S.88°E.	24.41	feet
Red Maple	6"	S.20°W.	32.09	feet
White Birch	9"	S.82°W.	72.57	feet
Red Maple	4"	N.20°W.	21.46	feet
Steel Sign Post		South	2.50	feet

Stock No. 26273

Sheet 3 of 4

4. Section Corner to Sections 3-4-9-10, T.34N., R.14E.

Corner position recovered from original Birch stump and Nathan Smith's two bearing trees from 1912 resurvey.

Corner References:

Sugar	4"	N.33°E.	17.07 feet
Sugar	7"	S.43°E.	46.94 feet
Sugar	6"	S.15°W.	27.79 feet
Sugar	5"	N.84°W.	29.01 feet
Steel Sign Post		S.80°E.	1.60 feet

5. Quarter Corner to Sections 2-3, T.34N., R.14E.

See Corner Restoration Certificate, Document Number 114054.

6. Quarter Corner to Sections 3-34, T.34-35N., R.14E.

See Corner Restoration Certificate, Document Number 113281.

7. Quarter Corner to Sections 3-4, T.34N., R.14E.

Corner restored at the intersection of a line projected from the east quarter corner through the center quarter and the west section line of Section 3.

Corner References:

Red Oak	16"	N.6°E.	38.20 feet
Sugar	7"	N.64°E.	52.19 feet
Sugar	8"	S.62°E.	41.89 feet
Steel Sign Post		West	1.00 feet

8. Center Quarter Corner to Section 3, T.34N., R.14E.

Corner recovered from Nathan Smith's 1924 bearing trees. Corner falls in centerline of town road.

Corner References:

Tamarack	6"	N.17°E.	50.94 feet
Tamarack	8"	S.29°E.	29.73 feet
Tamarack	10"	S.19°W.	26.00 feet
Steel Sign Post		North	15.00 feet

9. Center North One-Sixteenth Corner to Section 3, T.34N., R.14E.

Corner recovered from Nathan Smith's 1924 bearing tree. Corner falls on north-south fence line.

Corner References:

Red Maple Clump	20"	S.36°E.	37.64 feet
Black Spruce	6"	S.68°W.	49.21 feet
Tamarack	14"	N.12°W.	30.39 feet
Steel Sign Post		South	1.12 feet

CORNERS ESTABLISHED1. North One-Sixteenth to Sections 3-2, T.34N., R.14E.

Corner established proportionally and on line between the northeast corner and the east quarter corner of Section 3.

Corner References:

Black Ash	8"	N.78°E.	29.60 feet
Black Ash	8"	S.28°E.	69.85 feet
Steel Sign Post		East	5.80 feet

Stock No. 26273

Sheet 4 of 4

2. East One-Sixteenth to Sections 3-34, T.34-35N., R.14E.

Corner established midpoint and on line between the northeast corner and the north quarter corner of Section 3.

Corner References:

Black Cherry	4"	S.16°W.	21.50 feet
Sugar	10"	N.35°W.	23.16 feet
Steel Sign Post		West	2.00 feet

3. Northeast One-Sixteenth to Section 3, T.34N., R.14E.

Corner established at the intersection of the north and east one-sixteenth lines of Section 3.

Corner References:

Tamarack	5"	N.71°E.	22.56 feet
Tamarack	9"	S.21°W.	31.35 feet
Tamarack	7"	North	6.00 feet
Steel Sign Post		North	1.30 feet

4. Property Corner to Sections 3-4, T.34N., R.14E.

Corner established 300.0 feet southerly of the northwest corner of Section 3 on the west section line of said Section 3.

Corner References:

White Pine	20"	N.36°W.	22.81 feet
Red Pine	16"	S.57°W.	25.09 feet
Steel Sign Post		West	2.20 feet

SURVEYOR'S AFFIDAVIT

State of Wisconsin ]  
County of Forest ] SS

I, Milo E. Stefan, Cadastral Surveyor, U. S. Forest Service and a registered surveyor in the State of Wisconsin, hereby certify that I have surveyed and subdivided Section 3, Township 34 North, Range 14 East, Fourth Principal Meridian, State of Wisconsin.

The plat map and the notes herewith are a correct representation of the land surveyed and divided. I have surveyed and subdivided said section in accordance with the rules for survey of the public lands and with the statutes of the State of Wisconsin.



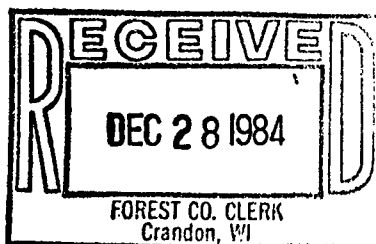
Date of Survey: 1982

*Milo E. Stefan*

Cadastral Surveyor, U. S. Forest Service  
R. L. S., State of Wisconsin  
Certificate S-1558

Plat Ready For Filing:

*Dale S. Stange*  
District Ranger



*Sarah L. Deer*  
Deputy Co. Clerk