

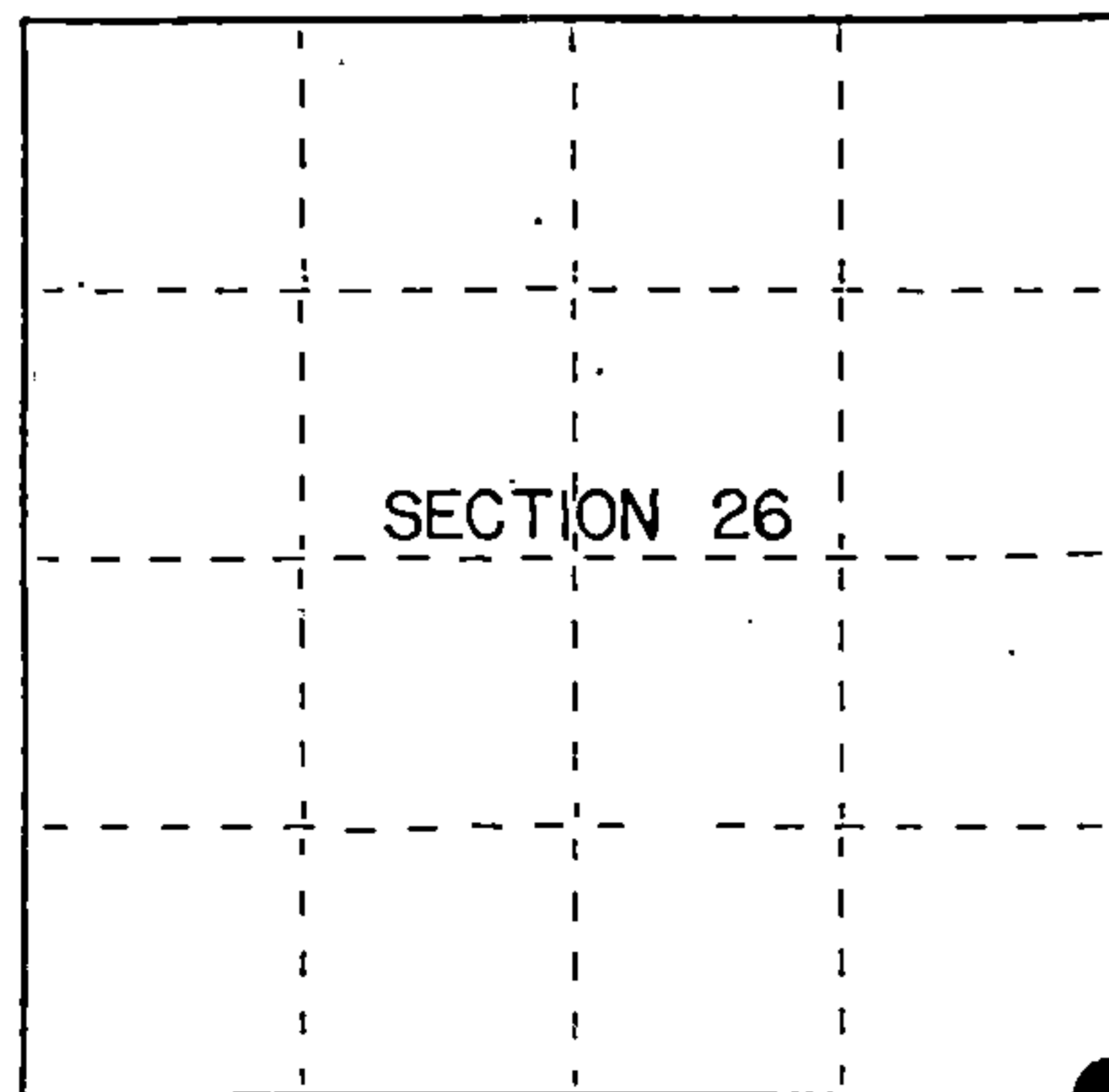
U.S. PUBLIC LAND SURVEY MONUMENT RECORD

Index No. V-21

State of Wisconsin }
County of Forest } ss.

I, Gary L. Pisoni, do hereby certify that on the 21st day of August, 1991, I found evidence of the Southeast Section corner of Section 26, Township 41, North, Range 14 East, Fourth Principal Meridian, as described hereon; and that from this evidence I established a new monument and accessories as described hereon to perpetuate the original location of this corner.

Resident witnesses:



● = Corner monument restored.

History of original corner establishment:
Original Government Survey in 1865 by William E. Daugherty.

On 8-9-34, Edward Roland, a compassman with the Forest Service found a 4"x4" wood stake from which a scribed Yellow Birch snag bears N45°W, 20.00 feet. Also found a metal location tag on a 6" dia. Maple from which the stake bears West 30.00 feet.

Description of corner evidence found:

Found the Yellow Birch stump and the metal location tag as described above attached to a 18" Maple which is blazed on all 4 sides. The wood post was not recovered.

I accept the Yellow Birch stump and the metal tag as the best available evidence for restoring the corner position.

Description of monument and accessories I established to perpetuate the original location of this corner. At a point S45°E, 20.00 feet from the Yellow Birch stump, set a 2½ inch diameter aluminum pipe monument, 3 feet long, 3 inches above the ground, with an aluminum cap stamped; T41N R14E, S25, S26, S35, S36, 1991, S-1634. From which the following new blazed and scribed bearing trees bear; (measurements taken to a nail in side of tree)

S. Maple	9"	N49°E	11.18 feet
S. Maple	9"	S02°W	25.46 feet
S. Maple	8"	N86°W	3.38 feet
S. Maple	8"	N32°W	20.50 feet
Steel Sign Post		North	0.69 feet

Dated at Iron River, MI, ~~Wxx~~ this 16th day of February, 1992.

Signature Gary L. Pisoni Title Land Surveyor Registration No S-1634
(County Surveyor, Registered Land Surveyor, or other duly authorized official)

Office of Register of Deeds, County of Forest, I hereby certify that the within instrument was filed in this office for record on the 10th day of March, 1993 at 10:45 o'clock P. M.

Paul Aschenbrenner
(Register of Deeds)

By _____ Deputy

FORM NO. 985-A

H.C. Miller Company
ST. LOUIS, MISSOURI

Stock No. 26273

146885

44114260000

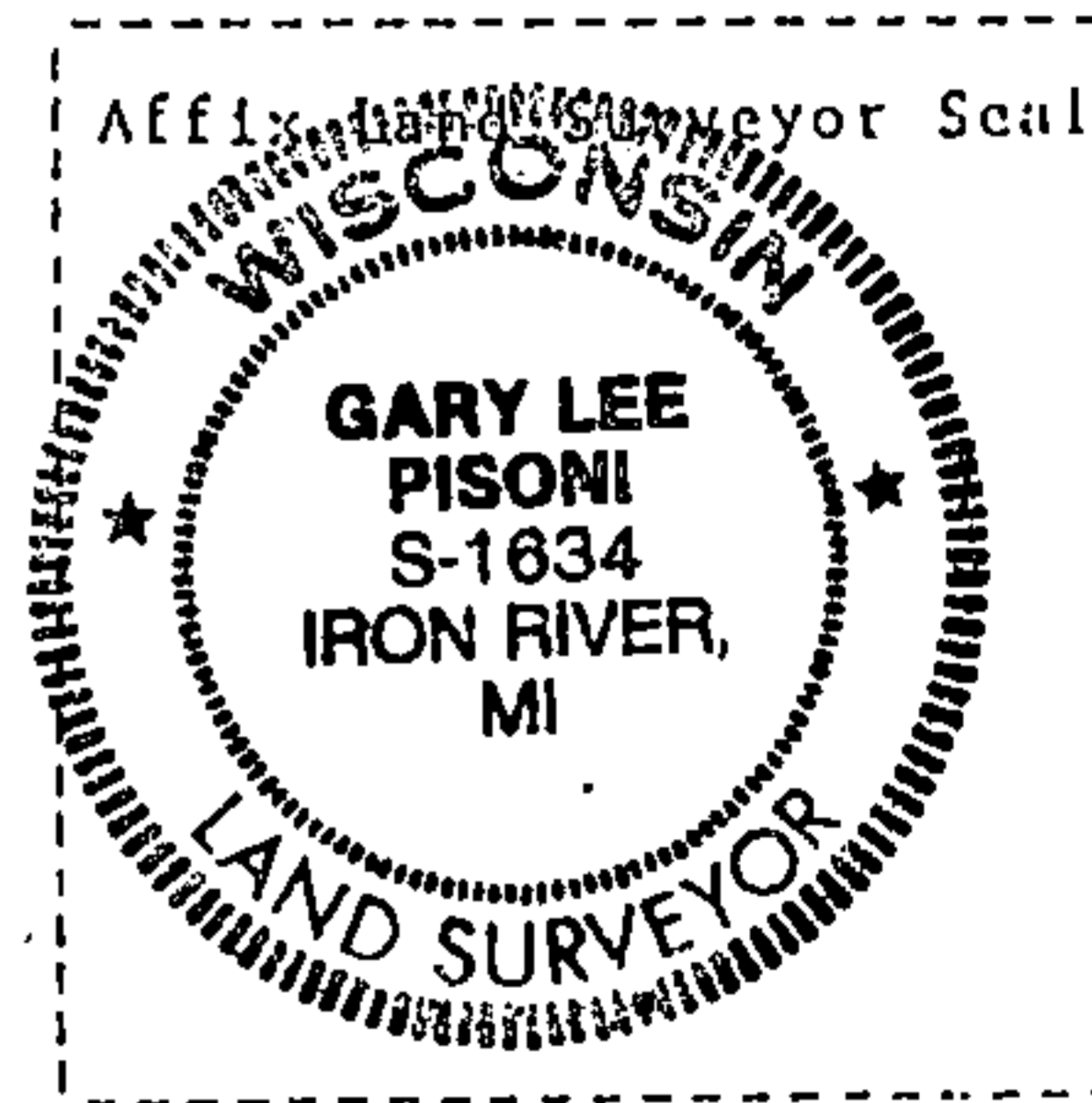
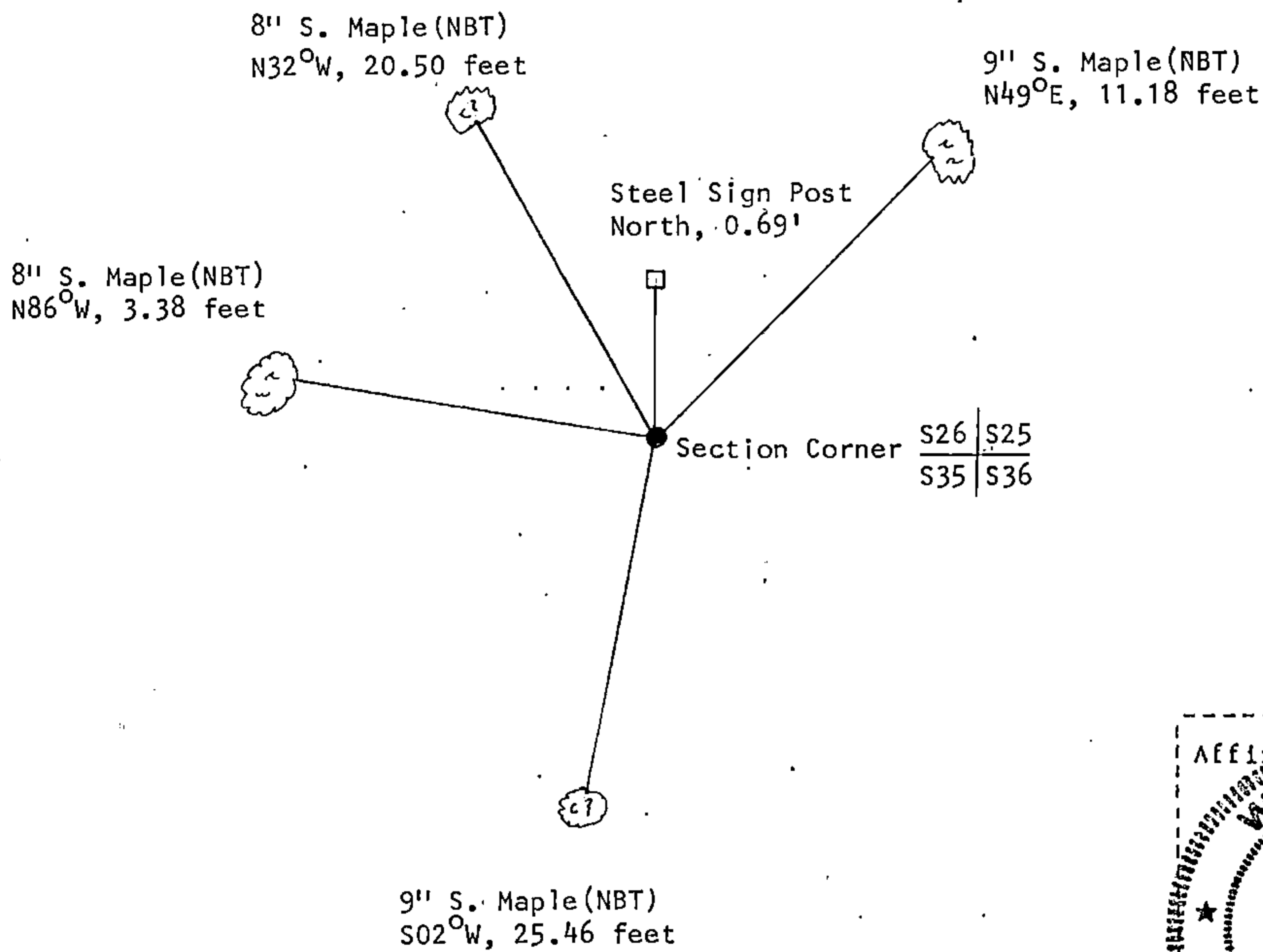
(e) Describe any material discrepancy between the location of the corner as restored or reestablished and the location of that corner as previously restored or reestablished by distance and direction. Show the discrepancy on the plan view drawing under (d), above. Show the distances between the corner as previously restored or reestablished and (1) the corner as restored or reestablished, and (2) to at least 2 of the witness monuments shown on the drawing in (d), above.

See drawing below.

(f) Was the corner restored through acceptance of (1) an obliterated evidence location, or, (2) a found perpetual location?

Restored from accepted evidence.

(g&h) Was the corner reestablished through lost corner proportionate methods? If so, show the method, including the directions and distances to other public land survey corners used as evidence or used for proportioning in determining the corner location?



(i) I, Gary L. Pisoni
[type or print name] certify that the corner location shown on this record was determined by me or under my direction and control and that this U.S. Public Land Survey Monument Record is correct and complete to the best of my knowledge and belief.

Gary L. Pisoni March 13th 1992
Signature Date

Survey requested by; Mike Carr 10/2/92
District Ranger Date