

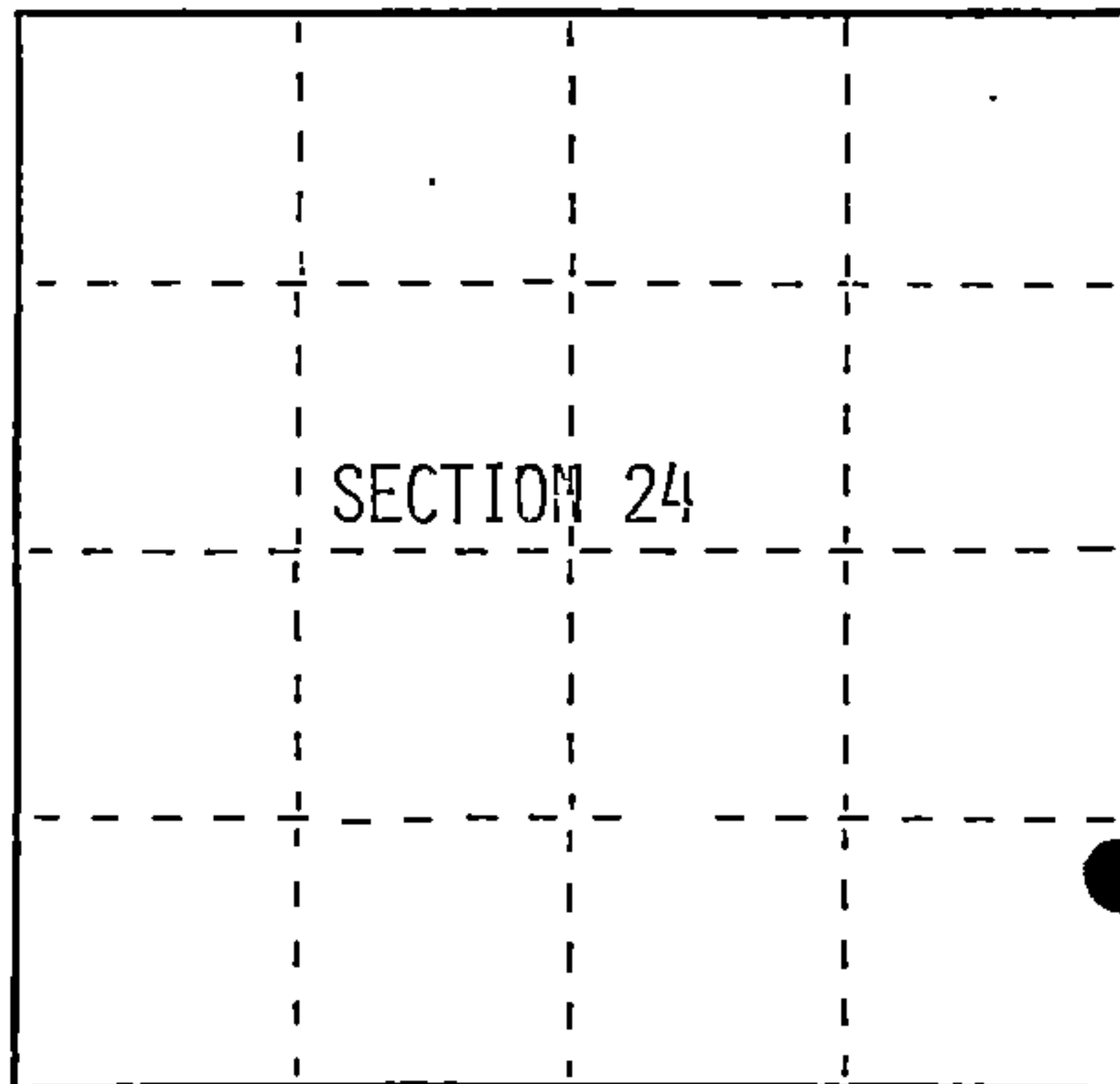
U.S. PUBLIC LAND SURVEY MONUMENT RECORD

Index No. Q.R-25

State of Wisconsin }
County of Forest } ss.

I, Gary L. Pisoni, do hereby
certify that on the 4th day
of September, 1991, I found
evidence of the Meander Corner
~~corner~~ between Sections 24 and 19
Township 41, North, Range
14 East, Fourth Principal Meridian,
as described hereon; and that from this evidence
I established a new monument and accessories
as described hereon to perpetuate the original
location of this corner.

Resident witnesses:



○ = Corner monument restored.

History of original corner establishment:

Original Government Survey in 1864 by William E. Daugherty. North between Sections 24 and 19, at 15.00 chains, set meander post, from which the following bear;

Cedar	10"	N80°E	30 lks.
Cedar	10"	S57°W	29 lks. •

Description of corner evidence found:

No original corner evidence was recovered.

I tried using the river ties to position the meander corner between Sections 24 and 19, but could not accurately determine the corner position. In order to re-establish the meander corner between Sections 24 and 19, I used the average mean bearing between Sections 25 and 30 and projected that bearing between Sections 24 and 19 to the South bank of the Brule River.

Description of monument and accessories I established to perpetuate the original location of this corner.

At the corner position, set a 2½ inch diameter aluminum pipe monument, 3 feet long, 3 inches above the ground, with an aluminum cap stamped; T41N, R14E, R15E, Meander Corner, S24, S19, 1992, S-1634, from which the following new blazed and scribed bearing trees bear; (measurements taken to a nail in side of tree)

Balsam	8"	East	16.81 feet
B. Cherry	7"	S73°E	22.49 feet
Balsam	6"	S54°W	11.32 feet
Steel Sign Post		South	0.8 feet

Monument is approximately 16 feet from river shoreline.

Dated at Iron River, MI, this 16th day of February, 1992

Signature Gary L. Pisoni Title Land Surveyor Registration No. S-1634
(County Surveyor, Registered Land Surveyor, or other duly authorized official)

Office of Register of Deeds, County of Forest, I hereby certify that the within instrument was filed in this office for record on the 12th day of August, 1993 at 1:25 o'clock P M.

By [Signature] (Register of Deeds) Deputy

FORM NO. 985-A

HCM/Title Company

Stock No. 26273
DOCUMENT NUMBER
148139

44114240800

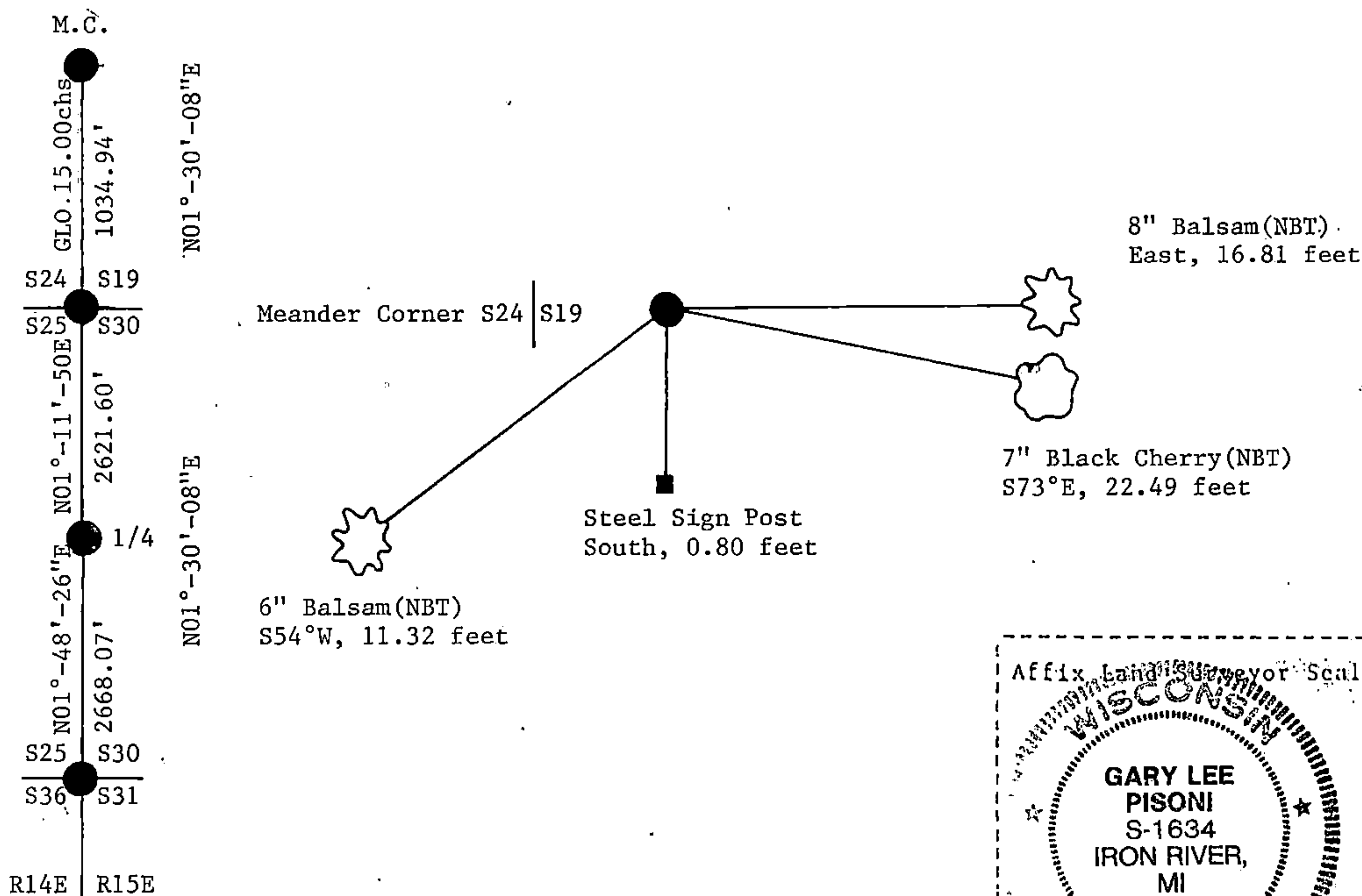
(e) Describe any material discrepancy between the location of the corner as restored or reestablished and the location of that corner as previously restored or reestablished by distance and direction. Show the discrepancy on the plan view drawing under (d), above. Show the distances between the corner as previously restored or reestablished and (1) the corner as restored or reestablished, and (2) to at least 2 of the witness monuments shown on the drawing in (d), above.

See drawing below.

(f) Was the corner restored through acceptance of (1) an obliterated evidence location, or, (2) a found perpetuated location?

Restored through lost corner proportionate methods.

(g&h) Was the corner reestablished through lost corner proportionate methods? If so, show the method, including the directions and distances to other public land survey corners used as evidence or used for proportioning in determining the corner location?



(i) I, GARY L. PISONI
(type or print name) certify that the corner location shown on this record was determined by me or under my direction and control and that this U.S. Public Land Survey Monument Record is correct and complete to the best of my knowledge and belief.

Gary L. Pisoni
Signature

Jan. 12, 1993
Date

