

U.S. PUBLIC LAND SURVEY MONUMENT RECORD

Index No. Z-25

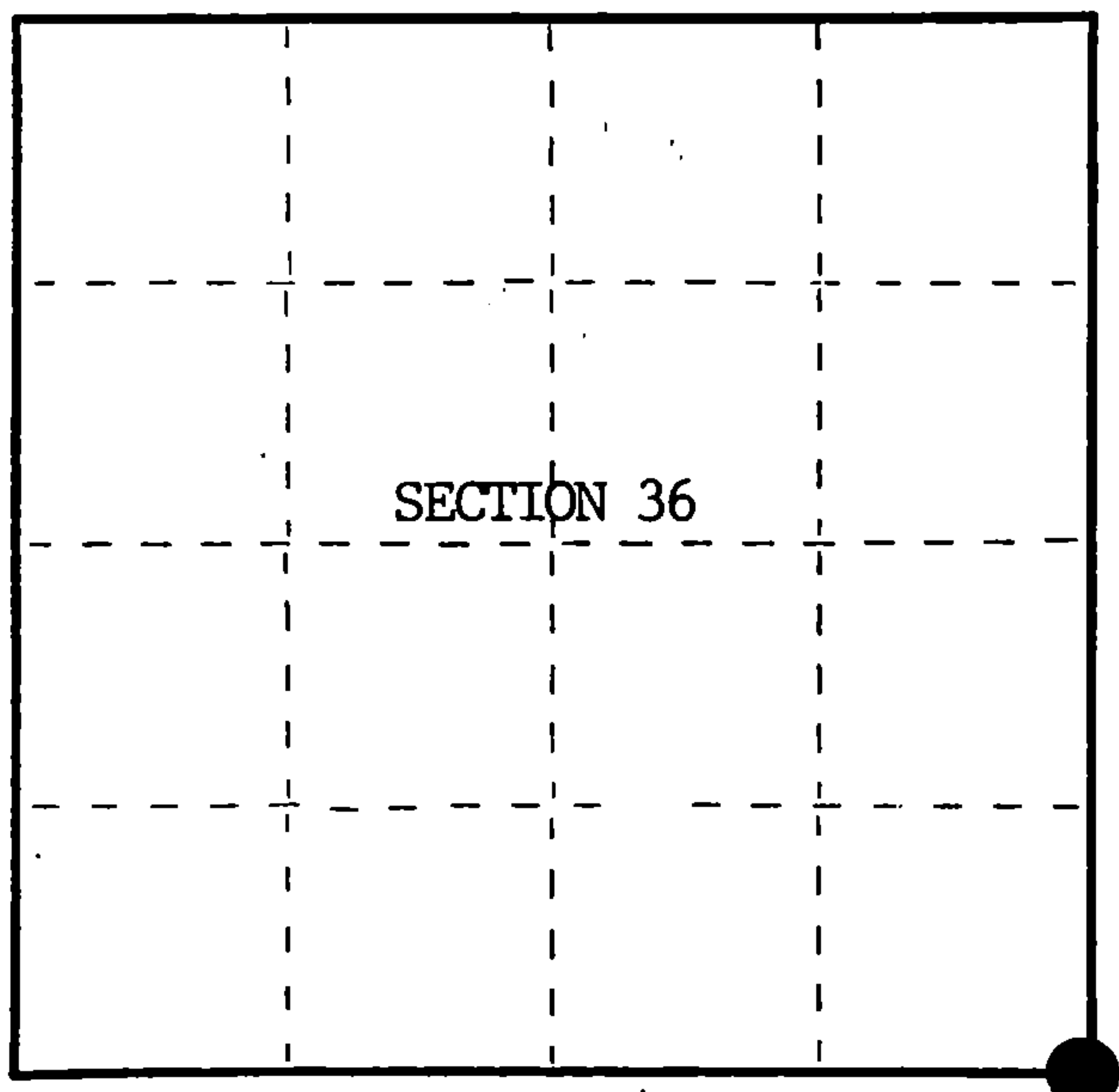
State of Wisconsin }  
County of Forest ss.

I William B. Cochrane, do hereby  
certify that on the 31st day  
of July, 1986, I found  
evidence of the Southeast Standard  
corner of Section 36  
Township 41, North, Range  
13 East, Fourth Principal Meridian,  
as described hereon; and that from this evidence  
I established a new monument and accessories  
as described hereon to perpetuate the original  
location of this corner.

Resident witnesses:

David Brownell

Tony Tillman



○ = Corner monument restored.

History of original corner establishment:

Original Government Survey in 1857 by Artemas Curtis. Dependent Resurvey in 1942  
by Guy R. Veal. East on the South side of Section 36, 39.93 chains, found a wooden  
post, rotted to ground, and a new post 4" square x 36 inches long. In place of post,  
set a concrete monument, 2 feet long, 6 inches in diameter, 18 inches in the ground,  
with an iron post in center, and a brass cap mkd; SC, T41N, R13E, R14E, S36, S31, 1942.  
From which the following bear;  
Hemlock 14" N12°E 100 lks.(66.00 feet)  
Poplar 5" N26°W 125 lks.(82.50 feet)

Description of corner evidence found:

Found monument as described and in place, from which a Hemlock stub bears N12°E, 66.00 feet.

No evidence of Poplar bearing tree.

Description of monument and accessories I established to perpetuate the original location of this corner.

Blazed and scribed the following new bearing trees;

Maple	8"	N19°E	34.88 feet
Maple	10"	S 6°E	5.49 feet
Maple	9"	N57°W	23.06 feet
Steel Sign Post		North	1.00 feet

Dated at Hiles, Wis., this 25th day of September, 1986

Signature William B. Cochrane Title Land Surveyor Registration No. S-1107  
(County Surveyor, Registered Land Surveyor, or other duly authorized official)

Office of Register of Deeds, County of Forest, I hereby certify that the within  
instrument was filed in this office for record on the 11th day of March, 1987  
at 3:30 o'clock P. M.

Paul Aschenbrenner  
(Register of Deeds)

By Deputy

FORM NO. 985-A  
H.C. Miller Company

Stock No. 26273

DOCUMENT NUMBER 132463

44113360000

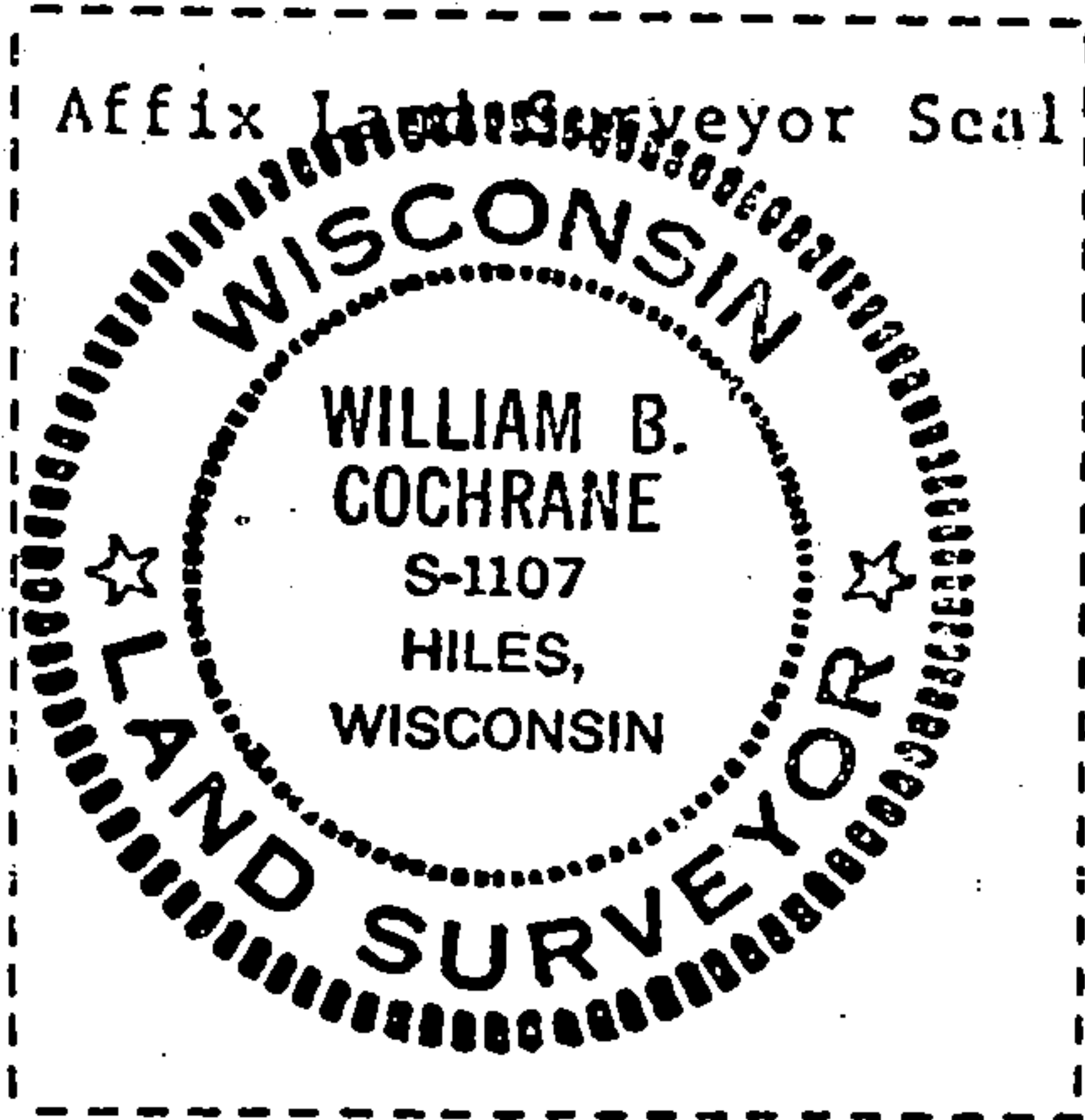
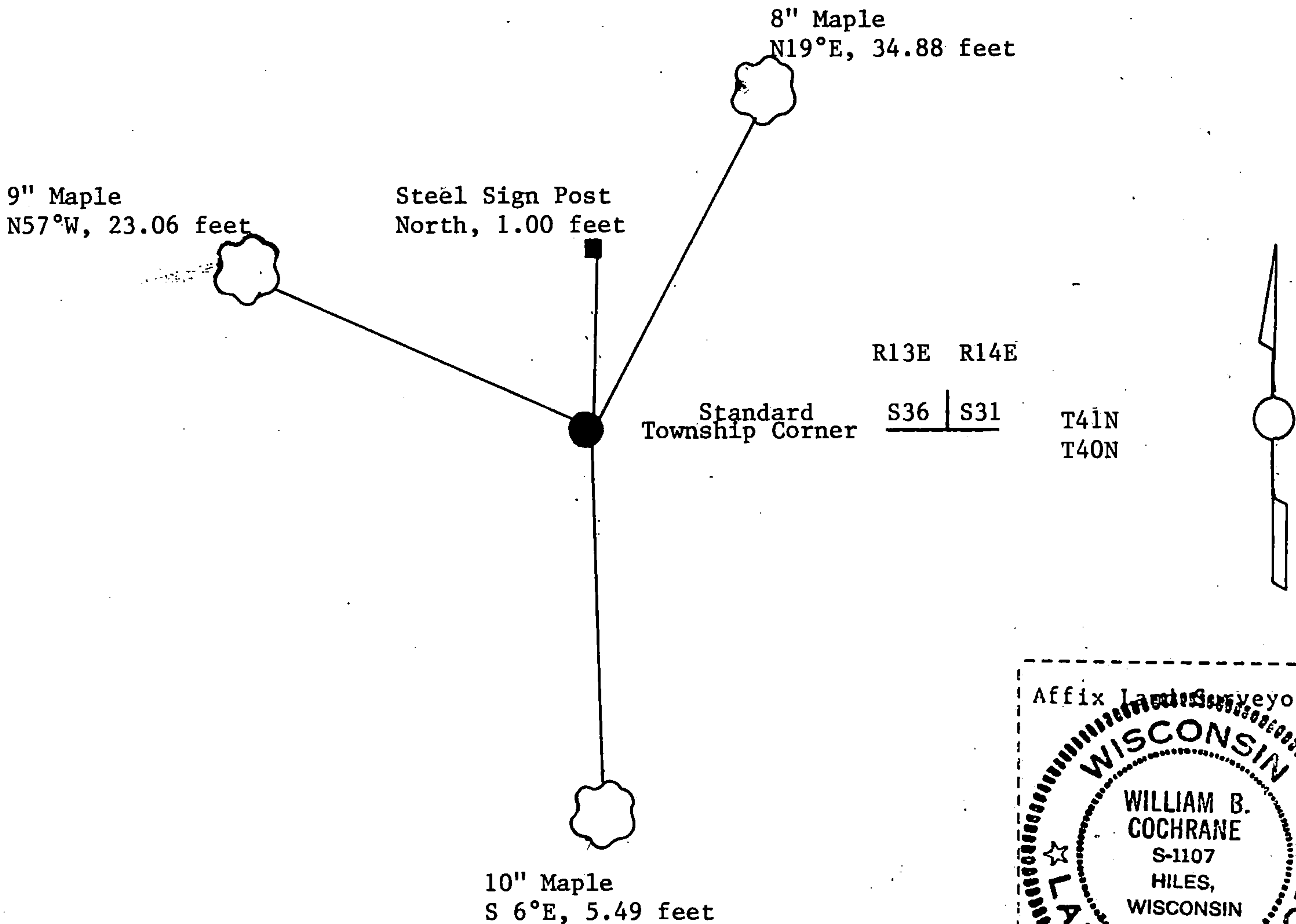
(e) Describe any material discrepancy between the location of the corner as restored or reestablished and the location of that corner as previously restored or reestablished by distance and direction. Show the discrepancy on the plan view drawing under (d), above. Show the distances between the corner as previously restored or reestablished and (1) the corner as restored or reestablished, and (2) to at least 2 of the witness monuments shown on the drawing in (d), above.

See drawing below.

(f) Was the corner restored through acceptance of (1) an obliterated evidence location, or, (2) a found perpetuated location?

Restored through acceptance of a found perpetuated location.

(g&h) Was the corner reestablished through lost corner proportionate methods? If so, show the method, including the directions and distances to other public land survey corners used as evidence or used for proportioning in determining the corner location?



(i) I, William B. Cochrane  
(type or print name) certify that the corner location shown on this record was determined by me or under my direction and control and that this U.S. Public Land Survey Monument Record is correct and complete to the best of my knowledge and belief.

William B. Cochrane October 14, 1986  
Signature Date

Certificate ready for filing: [Signature]  
District Ranger Date

# U.S. PUBLIC LAND SURVEY MONUMENT RECORD

Index No. Z-1

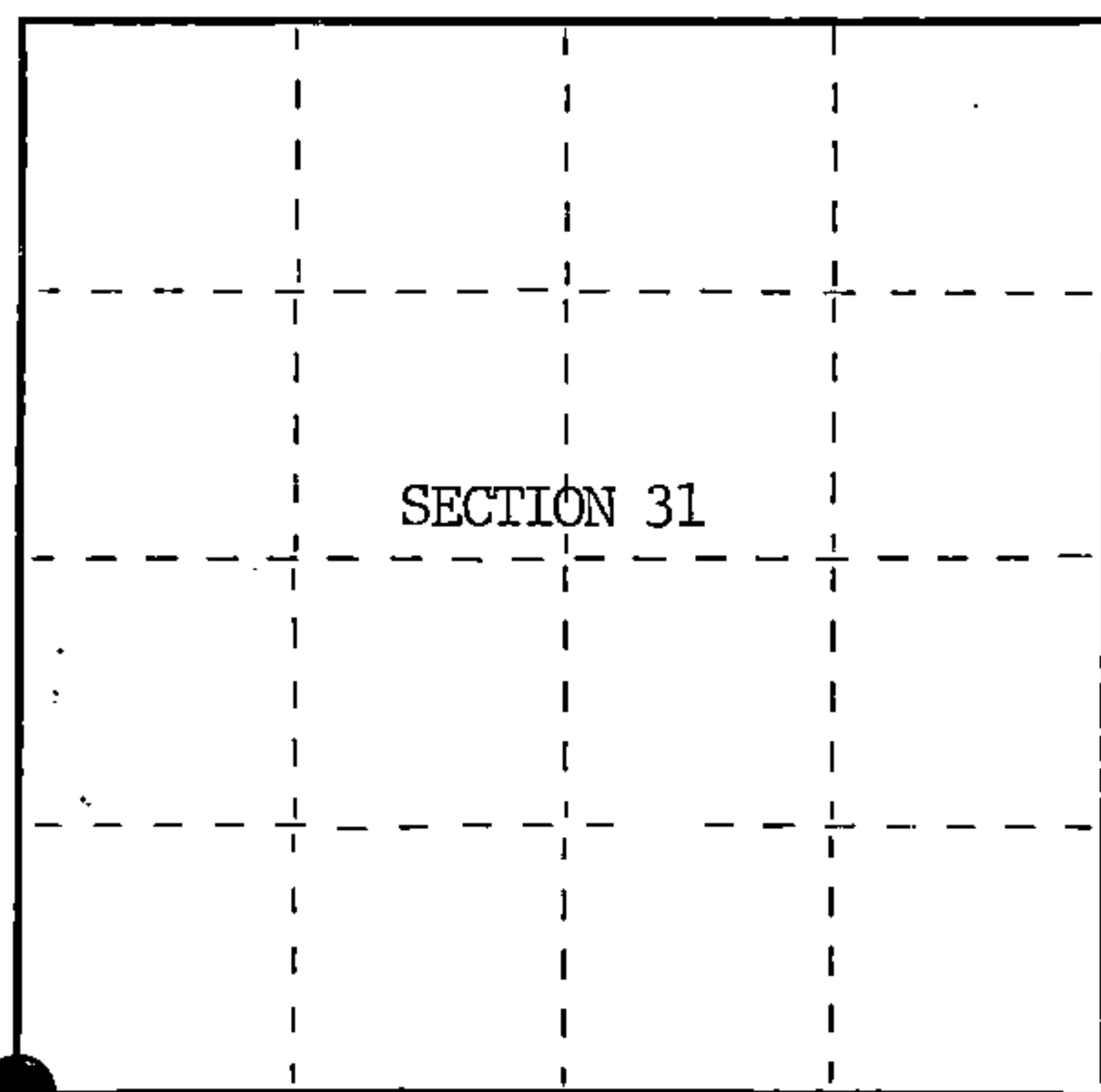
State of Wisconsin }  
County of Forest } ss,

I William B. Cochrane, do hereby certify that on the 31st day of July, 1986, I found evidence of the Southwest Standard Section corner of Section 31 Township 41, North, Range 14 East, Fourth Principal Meridian, as described hereon; and that from this evidence I established a new monument and accessories as described hereon to perpetuate the original location of this corner.

Resident witnesses:

David Brownell

Tony Tillman



○ = Corner monument restored.

History of original corner establishment:

Original Government Survey in 1857 by Artemas Curtis. Dependent Resurvey in 1942 by Guy R. Veal. East on the South side of Section 36, R13E, 39.93 chains, found a wooden post, rotted to the ground, and a new post, 4 inches square x 36 inches long. In place of post, set a concrete monument, 2 feet long, 6 inches in dia., 18 inches in the ground, with an iron post in center, and a brass cap mkd; SC, R13E, R14E, S31, S36, 1942. From which the following bear;

Hemlock	14"	N12°E	100 lks.(66.00 feet)
Poplar	5"	N26°W	125 lks.(82.50 feet)

Description of corner evidence found:

Found monument as described and in place, from which a Hemlock stub bears N12°E, 66.00 feet.

No evidence of Poplar bearing tree.

Description of monument and accessories I established to perpetuate the original location of this corner.

Blazed and scribed the following new bearing trees;

Maple	8"	N19°E	34.88 feet
Maple	10"	S 6°E	5.49 feet
Maple	9"	N57°W	23.06 feet
Steel Sign Post		North	1.00 feet

Dated at Hiles, Wis., this 25th day of September, 1986

Signature William B. Cochrane Title Land Surveyor Registration No. S-1107  
(County Surveyor, Registered Land Surveyor, or other duly authorized official)

Office of Register of Deeds, County of Forest, I hereby certify that the within instrument was filed in this office for record on the 11th day of March, 1987 at 3:30 o'clock P. M.

Paul Aschenbrenner  
(Register of Deeds)

By \_\_\_\_\_ Deputy

FORM NO. 985-A

H.C. Miller Company  
ALABAMA WISCONSIN

Stock No. 26273

DOCUMENT NUMBER 132464

44113360000

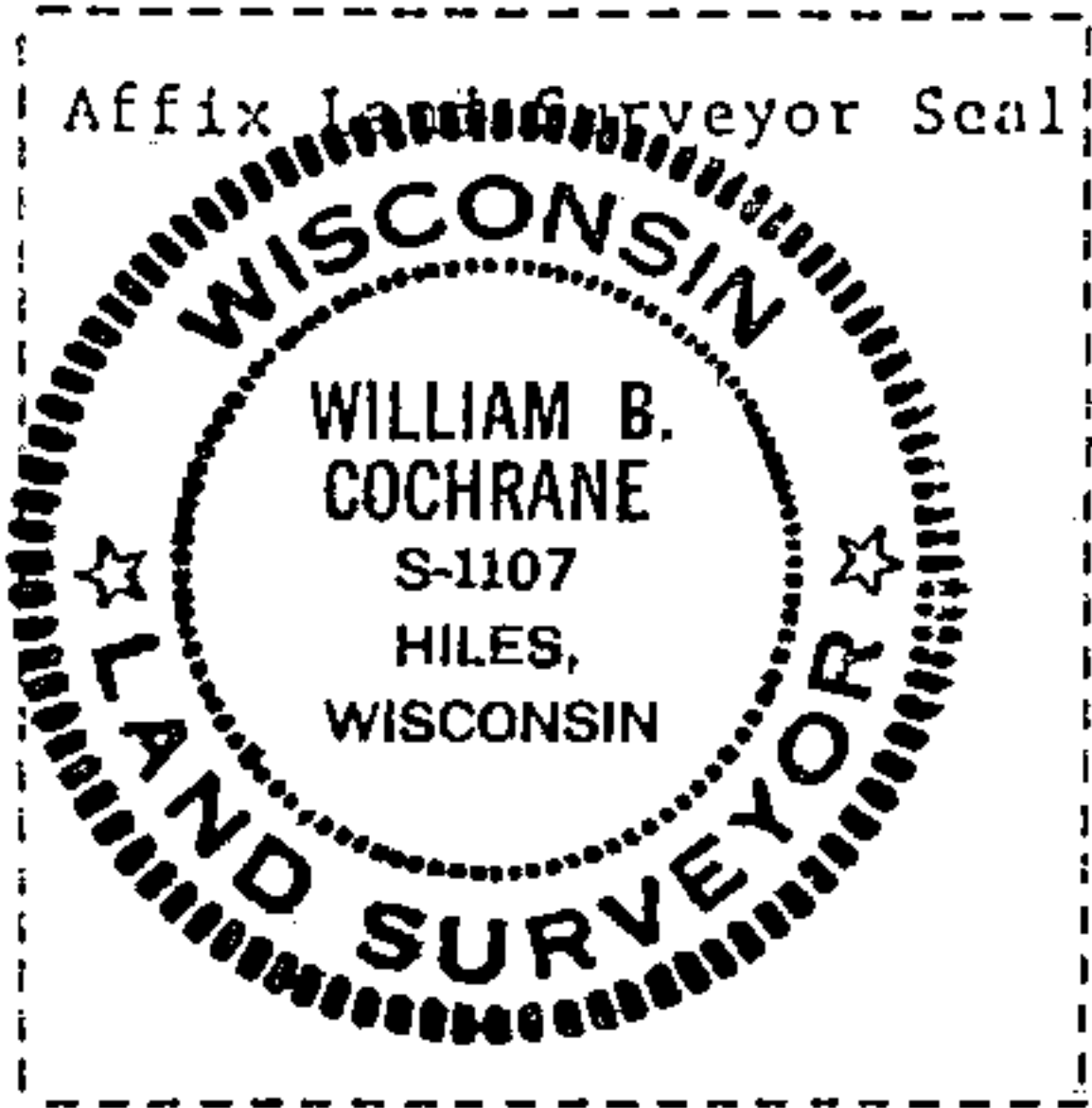
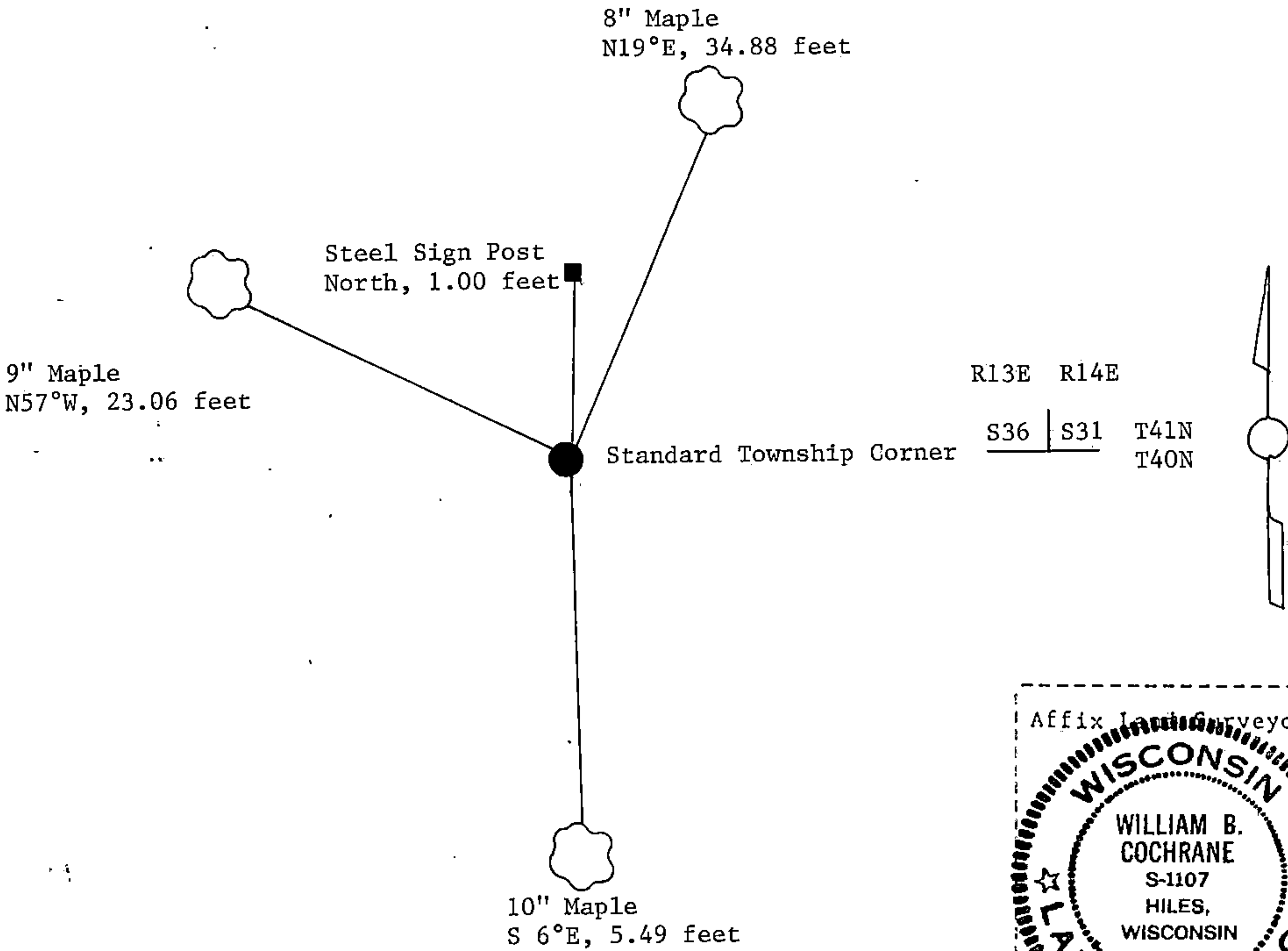
(e) Describe any material discrepancy between the location of the corner as restored or reestablished and the location of that corner as previously restored or reestablished by distance and direction. Show the discrepancy on the plan view drawing under (d), above. Show the distances between the corner as previously restored or reestablished and (1) the corner as restored or reestablished, and (2) to at least 2 of the witness monuments shown on the drawing in (d), above.

See drawing below.

(f) Was the corner restored through acceptance of (1) an obliterated evidence location, or, (2) a found perpetuated location?

Restored through acceptance of a found perpetuated location.

(g&h) Was the corner reestablished through lost corner proportionate methods? If so, show the method, including the directions and distances to other public land survey corners used as evidence or used for proportioning in determining the corner location?



(i) I, William B. Cochrane  
(type or print name) certify that the corner location shown on this record was determined by me or under my direction and control and that this U.S. Public Land Survey Monument Record is correct and complete to the best of my knowledge and belief.

William B. Cochrane October 14, 1986  
Signature Date

Certificate ready for filing: [Signature] 3-9-87  
District Ranger Date