

136577

U.S. PUBLIC LAND SURVEY MONUMENT RECORD

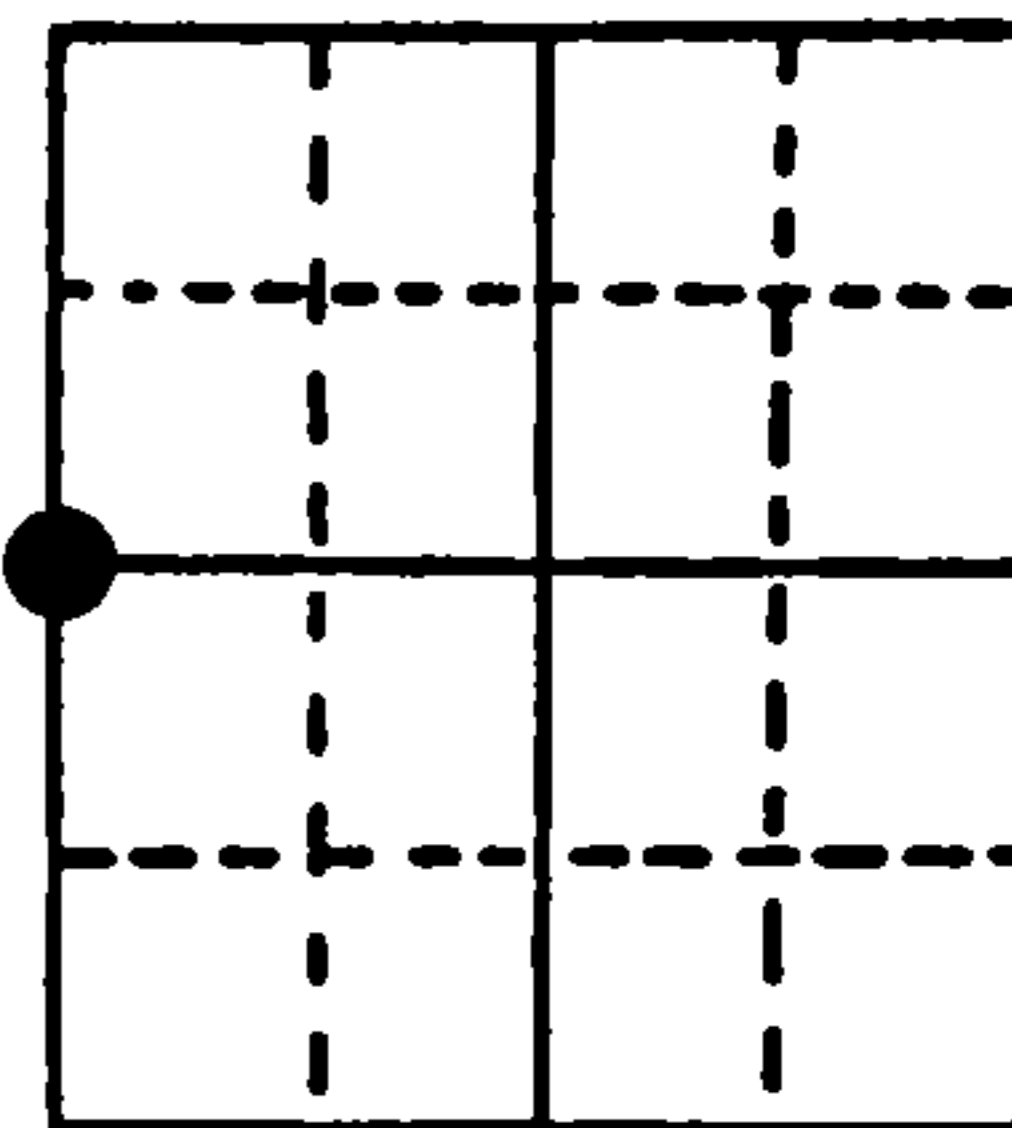
Note: This form is intended and designed to fulfill all requirements of Wisconsin Administrative Code, Chapter A-E 5.02, U.S. Public Land Survey Monument Record (3) (a) (b) (c) (d) (e) (f) (g) (h) (i). An additional sheet may be added if necessary to conform with said requirements.

(a) Corner location: Township 41 North

Range 13 East/West

Town/City/Village Alvin

County Forest



Section 7

(b) (f) (g) (h) Description of monument found at this corner and if it was accepted, state all evidence (material, testimonial, occupational, plats, records, other monuments) used as a basis for accepting. If not accepted or if nothing was found, state evidence used as basis for establishing location. If reestablished through lost corner proportionate methods, indicate all monuments, distances and directions used to establish.

Found 1941 6" diameter General Land Office brass capped concrete monument stamped identifying the corner.

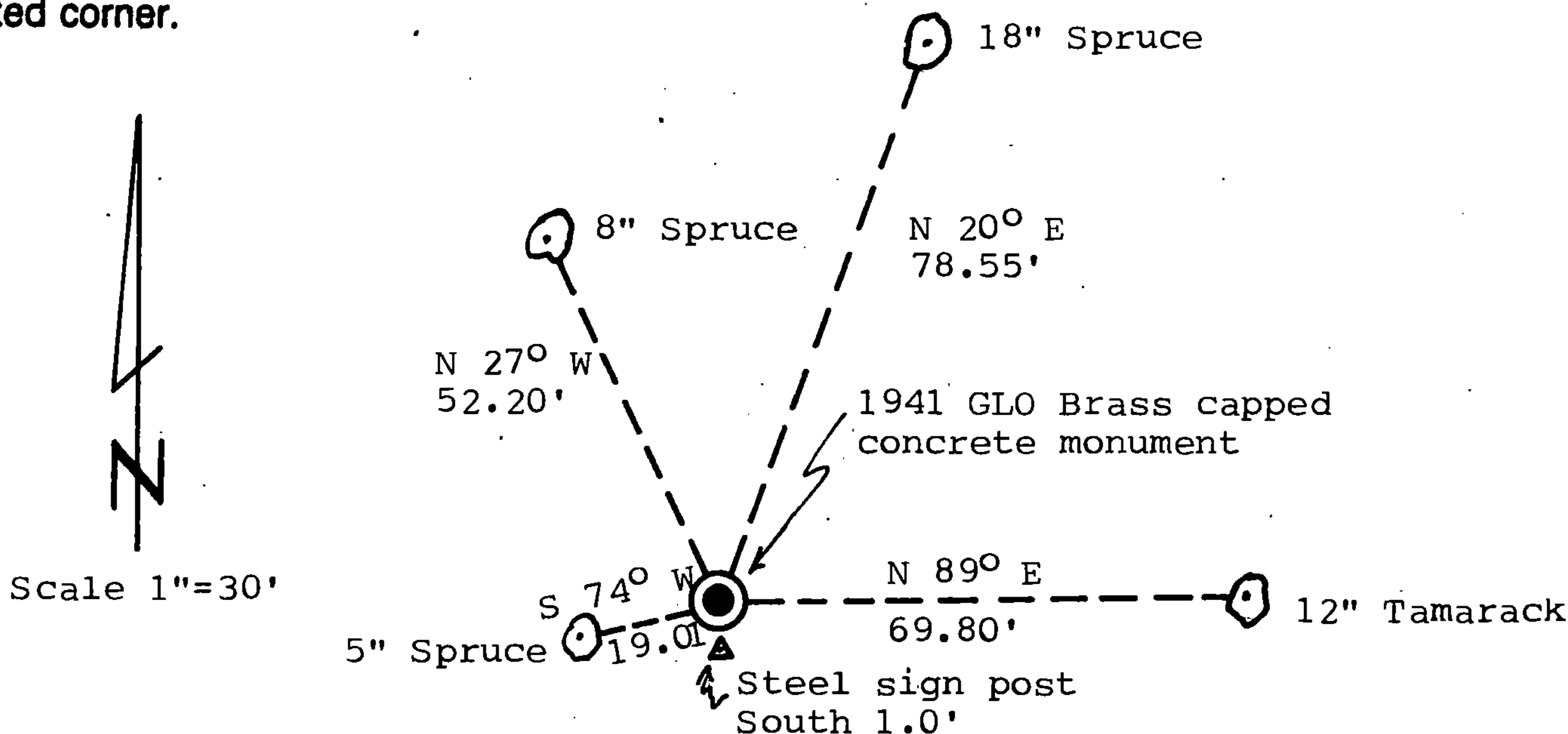
BT found: 12" Tamarack N 89° E 69.80 feet.

REGISTER'S OFFICE
Forest County, Wis.

Received for record this 9th day
of December A.D., 1988 at
10:10 o'clock A M. and recorded
in Vol. CORNER RESTORATIONS
page 9-1

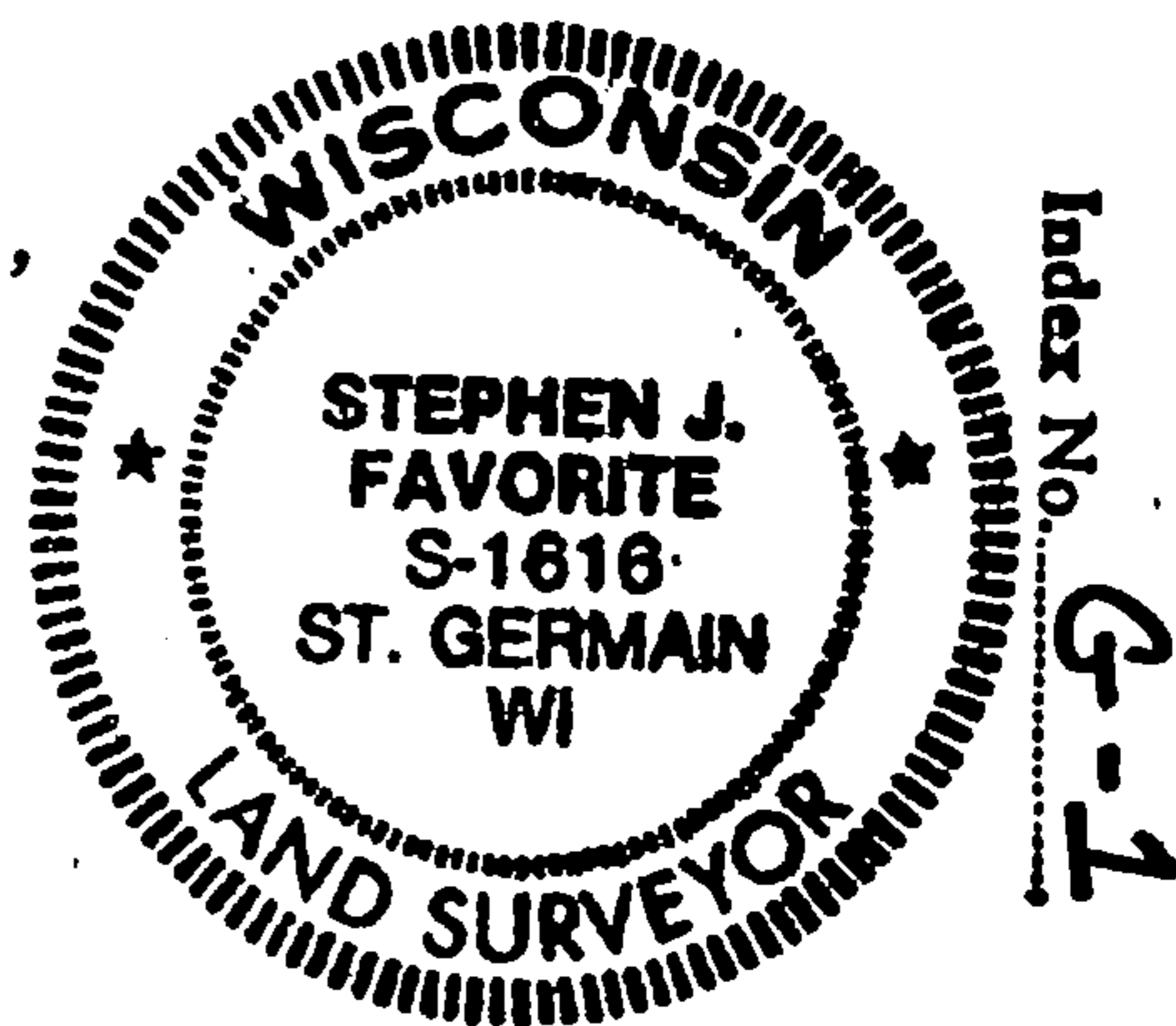
Paul Fischenbrunner
Register of Deeds

(c) (d) (e) Plan view of corner with ties to at least 4 witness monuments. If in disagreement with previously established corner, show the distances between the two corners and also indicate the ties to the disputed corner.



(i) I, Stephen J. Favorite, Registered Land Surveyor #S-1616,
(type or print name) certify that the corner location on this record
was determined by me or under my direction and control and that
this U.S. Public Land Survey Monument Record is correct and
complete to the best of my knowledge and belief.

Stephen J. Favorite February 9, 1988
Signature Date
Survey requested by: *Carol Lynn* 11/17/88
District Ranger Date



44112122000

4/1-12