

CERTIFIED LAND CORNER RESTORATION

State of Wisconsin }
County of Forest } ss.

I, Jean F. Resvick, do hereby certify that on the 13 day of September, 19 76, I found evidence of the East Quarter corner of Section 36 Township 40 North Range 14 East, Fourth Principal Meridian, as described hereon; and that from this evidence I established a new monument and accessories as described hereon to perpetuate the original location of this corner:

Description of original monument and accessories and subsequent restorations:

Surveyed in 1858 by Artemas Curtis
Dependent resurvey in 1945 by Hugh B. Crawford
From remains of original bearing trees, set a concrete monument 3 ft. long 4 ins. diam., 28 ins. in the ground, with brass cap marked 1/4, S36, S31, 1945
Cedar 4, bears S35E, 53 lks.
Cedar 4, bears S71 1/2 W, 41 lks.

Description of corner evidence found:

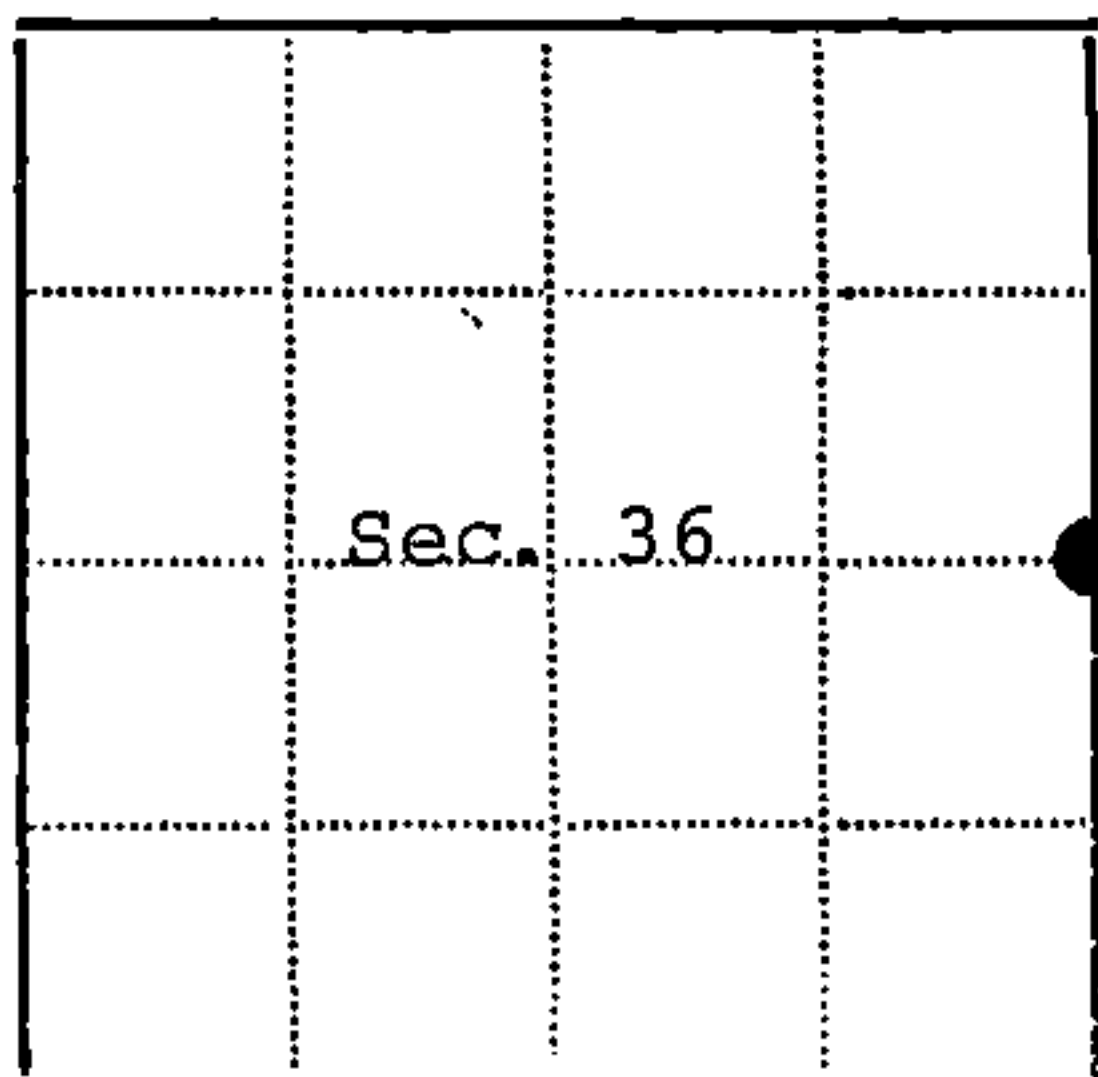
Monument as described. Frost heaved and leaning.
Yellow Birch stump S24E, 5 lks., original
Cedar 7, S35E, 53 lks.
Cedar 7, S71 1/2W, 41 lks.

Description of monument and accessories I established to perpetuate the location of this corner:

Reset monument and tamped monument, place bearing tree signs.
Set steel sign post southwest side of monument.



44014362000



● - Corner monument restored
□ -

Resident witnesses.....

Dated at Rhineland Wisconsin, this 22 day of September 19 76.

Signature Jean F. Resvick Title Land Surveyor
(County Surveyor, Registered Land Surveyor, or other duly authorized official)

Surveyors Registration No. S-802

DOCUMENT Number 110930

Office of Register of Deeds County of Forest

I hereby certify that the within instrument was filed in this office for record on the 31st day of January 19 77, and was filed in Book No. _____ Page No. _____ of County Records.

Signature Eugene Stetson Title Register of Deeds

Township 40 North, Range 14 East, Section 36, Index No. X-25, Page No. _____

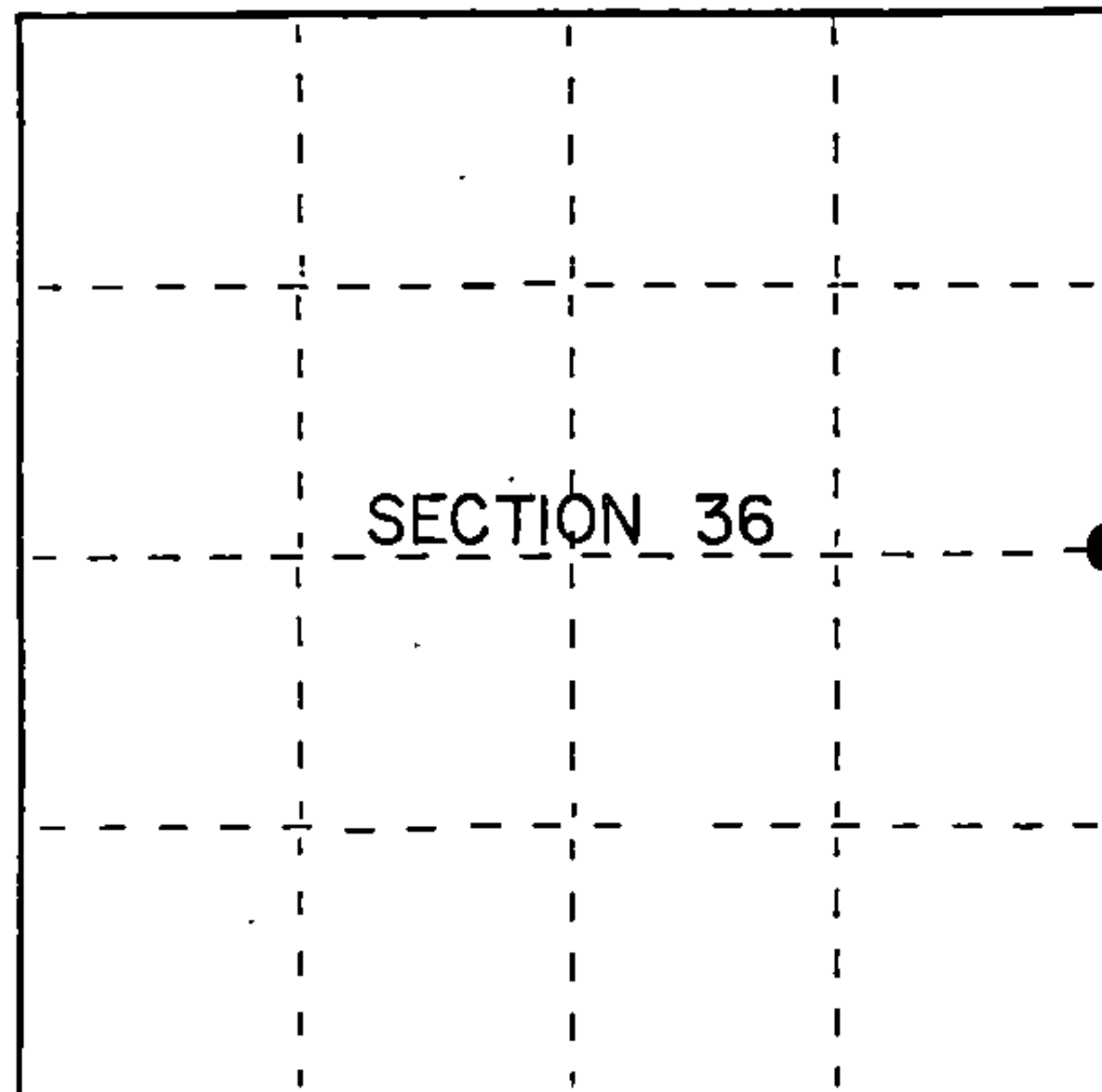
U.S. PUBLIC LAND SURVEY MONUMENT RECORD

Index No. X-25

State of Wisconsin }
County of Forest } ss.

I, Gary L. Pisoni, do hereby
certify that on the 30th day
of December, 1989, I found
evidence of the East quarter
corner of Section 36
Township 40, North, Range
14 East, Fourth Principal Meridian,
as described hereon; and that from this evidence
I established a new monument and accessories
as described hereon to perpetuate the original
location of this corner.

Resident witnesses:



● = Corner monument restored.

History of original corner establishment:

Dependent resurvey in 1945 by Hugh B. Crawford; N 0°25'E between Sections 36 and 31, 39.70 chains, corner determined from the remains of original bearing trees, at the corner position set a concrete monument, 3' long, 4" diameter, 28" in the ground with an iron post 3' long, 1" diameter, embedded in center with brass cap marked: T40N, R14E, R15E, 1/4, S-36, S-31, 1945 from which the following bear: Cedar 4" S 35°E 34.98 feet Cedar 4" S 71½°W 27.06 feet In 1976, Jean Resvick, U.S.F.S., found monument as described above and found same corner references as 1945.

Description of corner evidence found:

Found monument as described above, but laying on its side and broken apart.

Monument located in 2 feet of water, in a flooded swamp.

Corner references found:

Cedar	10"	S 33°E	34.80 feet
Cedar	9"	S 71°W	27.18 feet

Description of monument and accessories I established to perpetuate the original location of this corner.

Replaced damaged monument with a 2½" diameter aluminum pipe monument, 5' long 8" above water surface with an aluminum cap stamped: T40N, R14E, R15E, 1/4, S-36, S-31, 1989, S-1634 from which the following new blazed and scribed bearing trees bear, all measurement taken to a nail in side of tree:

Spruce	11"	N 41°E	44.91 feet
Spruce	10"	N 15°W	42.18 feet
Steel sign post		N 62°W	0.3 feet

Dated at Iron River, MI, this 30th day of December, 1989.

Signature Gary L. Pisoni Title Land Surveyor Registration No. S-1634
(County Surveyor, Registered Land Surveyor, or other duly authorized official)

Office of Register of Deeds, County of Forest, I hereby certify that the within instrument was filed in this office for record on the 20th day of September, 1990 at 10:15 o'clock A. M.

(Register of Deeds)

By Shel Chitko Deputy

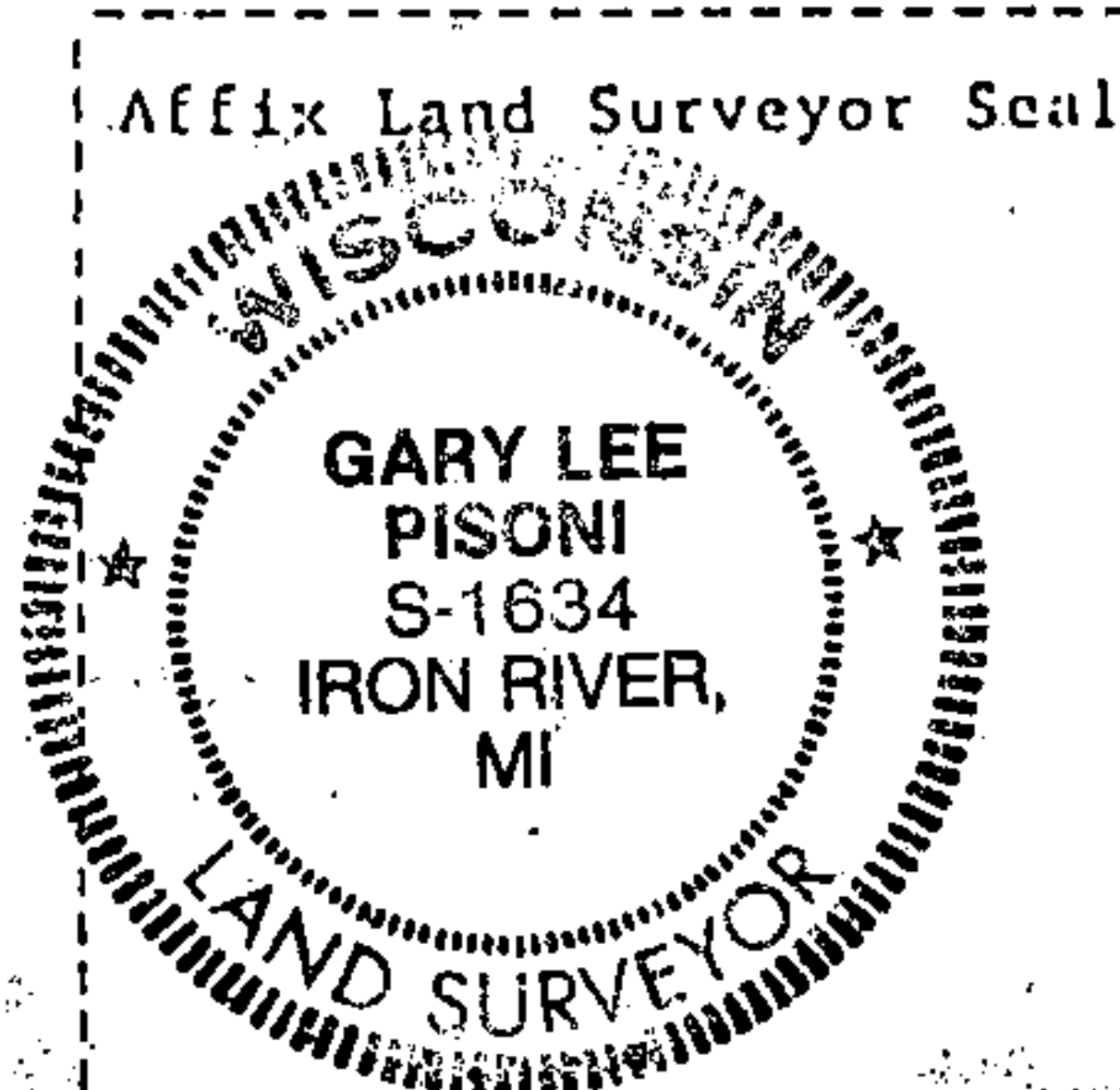
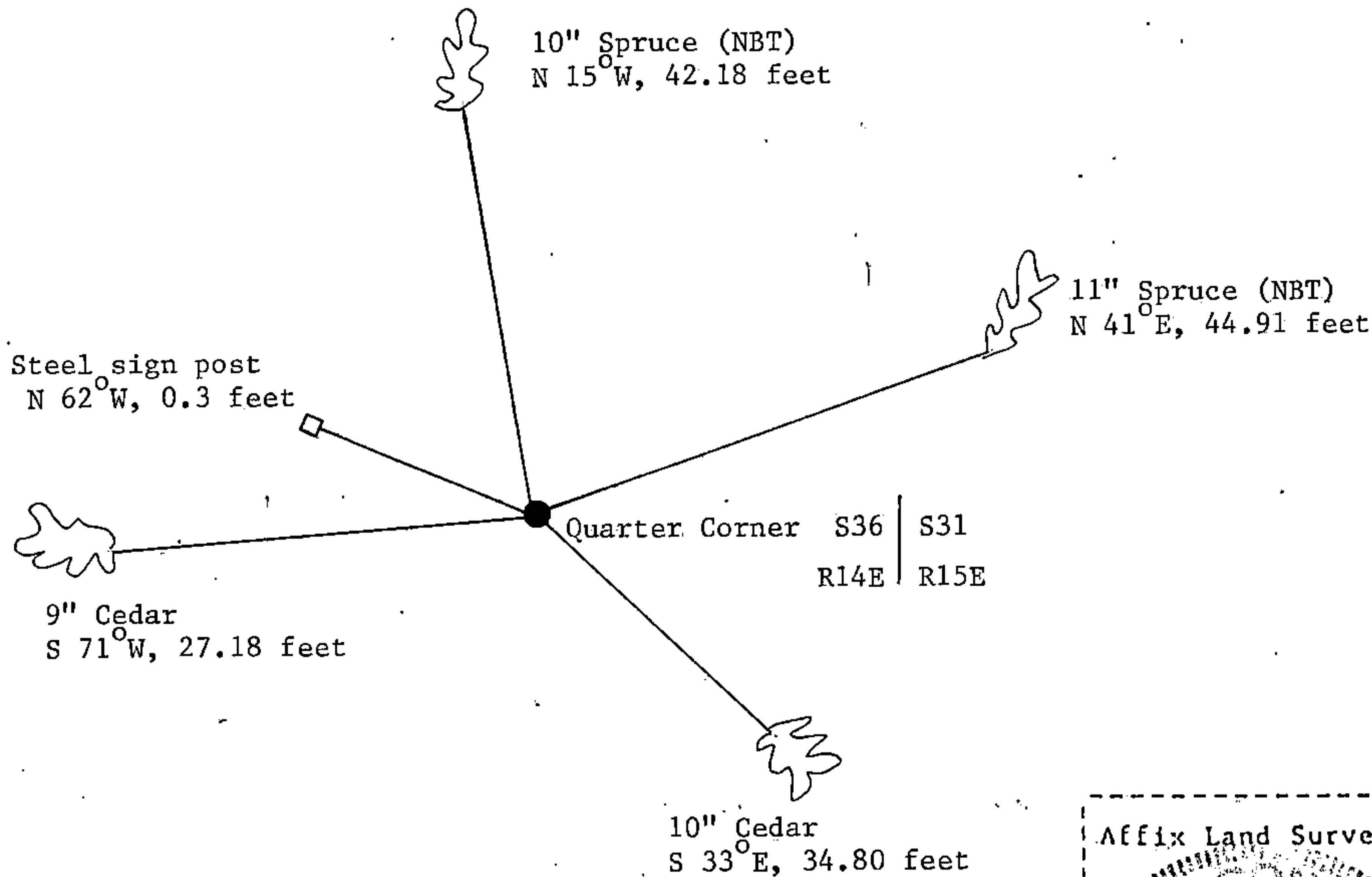
- e) Describe any material discrepancy between the location of the corner as restored or reestablished and the location of that corner as previously restored or reestablished by distance and direction. Show the discrepancy on the plan view drawing under (d), above. Show the distances between the corner as previously restored or reestablished and (1) the corner as restored or reestablished, and (2) to at least 2 of the witness monuments shown on the drawing in (d), above.

See drawing below

- (f) Was the corner restored through acceptance of (1) an obliterated evidence location, or, (2) a found perpetuated location?

Restored through acceptance of a found perpetuated location.

- (g&h) Was the corner reestablished through lost corner proportionate methods? If so, show the method, including the directions and distances to other public land survey corners used as evidence or used for proportioning in determining the corner location?



- (i) Gary L. Pisoni
[type or print name] certify that the corner location shown on this record was determined by me or under my direction and control and that this U.S. Public Land Survey Monument Record is correct and complete to the best of my knowledge and belief.

Signature Gary L. Pisoni Date Jan 12 1990

Survey requested by: [Signature] District Ranger Date 9-18-90