

U.S. PUBLIC LAND SURVEY MONUMENT RECORD

Index No. Z-23

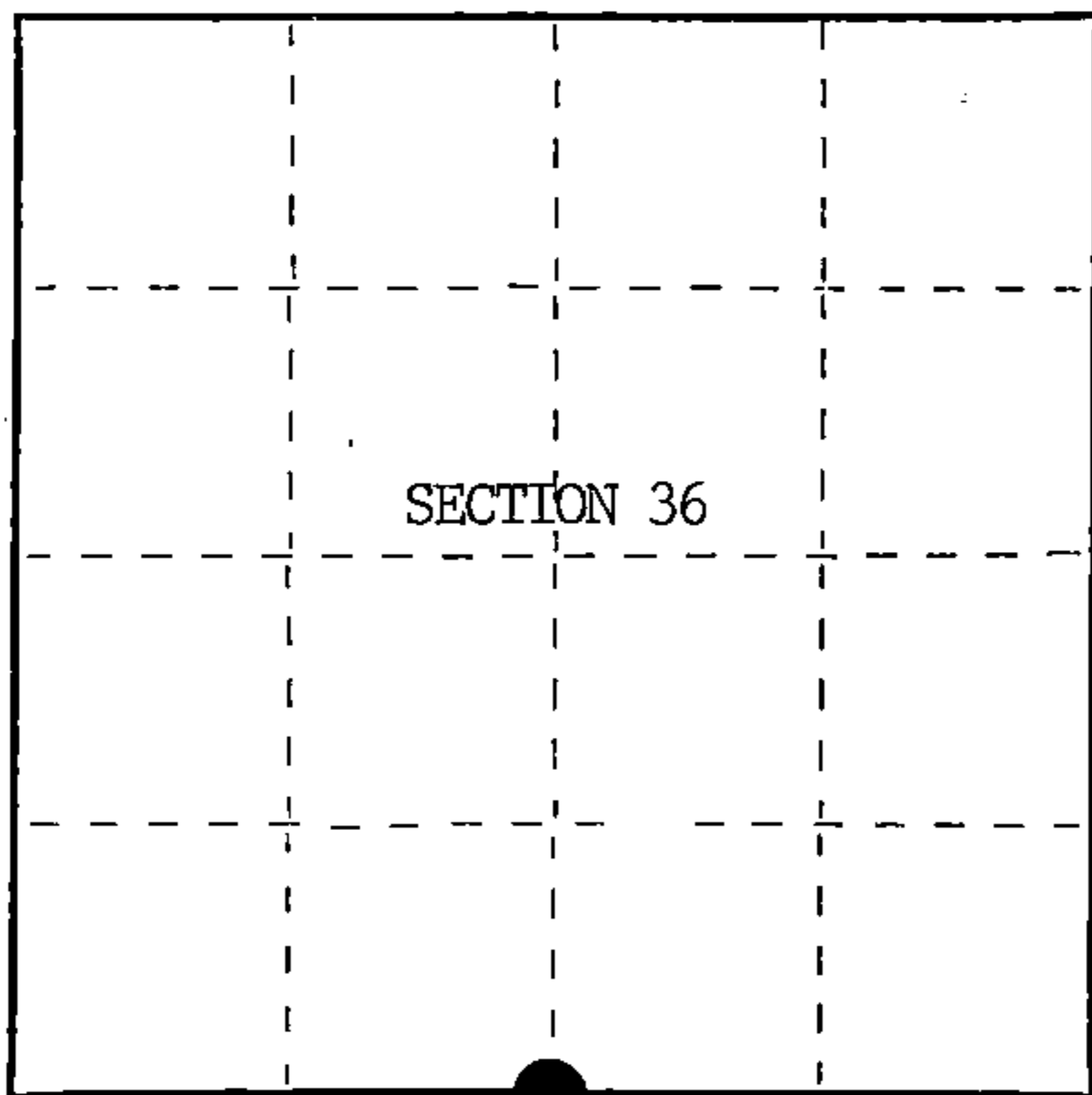
State of Wisconsin }
County of Forest } ss.

I William B. Cochran, do hereby certify that on the 22nd day of August, 1985, I found evidence of the South Quarter corner of Section 36 Township 40, North, Range 14 East, Fourth Principal Meridian, as described hereon; and that from this evidence I established a new monument and accessories as described hereon to perpetuate the original location of this corner.

Resident witnesses:

Tony Tillman

State Plane Co-ordinates
N- 268,830.5140
E- 2,334,652.2480



○ = Corner monument restored.

History of original corner establishment:

Original Government Survey in 1858 by Artemas Curtis. Dependent Resurvey in 1945 by Hugh Crawford. From the remains of original bearing trees, set an iron post, 2 ins. diam., 3 feet long, 28 ins. in the ground, with a brass cap stamped; T40N, R14E, 1/4, S1, S36, T39N, 1945. From which the following bear;

W. Pine	9"	N11°15'E	109 lks.
Maple	12"	S 9°15'W	74 lks.

Description of corner evidence found:

Found monument as described and in place, from which the following bear;

W. Pine	18"	N11°15'E	71.94 feet
Maple	15"	S 9°15'W	48.84 feet-Cut down for Aerial Photo Project.

Description of monument and accessories I established to perpetuate the original location of this corner.

Blazed and scribed a new bearing tree;

Maple	16"	N76°E	32.94 feet
Re-set Steel Sign Post		NW	2.00 feet

Dated at Hiles, Wis., this 5th day of March, 1986

Signature William B. Cochran Title Land Surveyor Registration No. S-1107
(County Surveyor, Registered Land Surveyor, or other duly authorized official)

Office of Register of Deeds, County of Forest, I hereby certify that the within instrument was filed in this office for record on the 7th day of March, 1989 at 9:55 o'clock A. M.

Paul Aschenbrenner
(Register of Deeds)

By Sandra L. Tiedt Deputy

44014360020

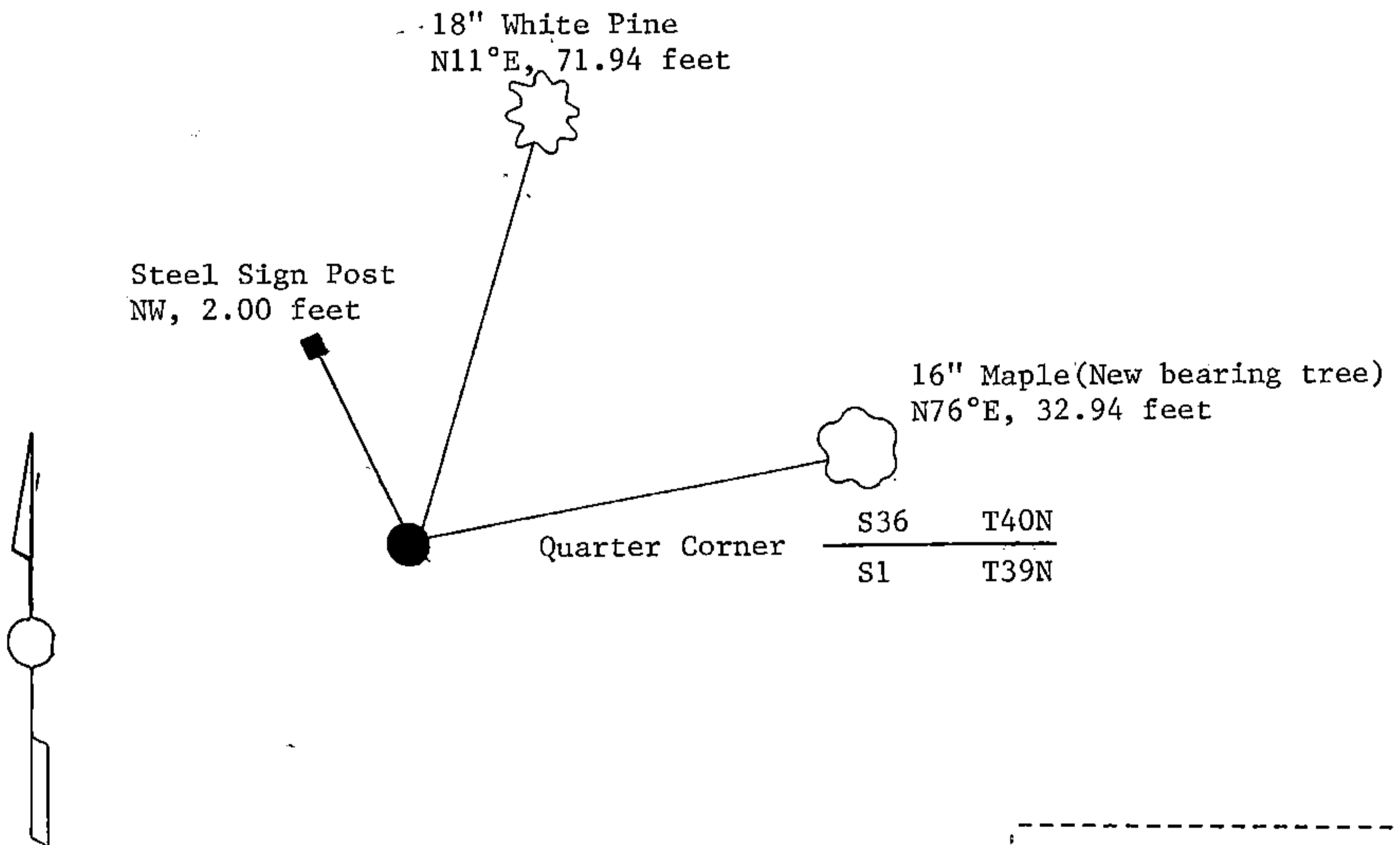
(e) Describe any material discrepancy between the location of the corner as restored or reestablished and the location of that corner as previously restored or reestablished by distance and direction. Show the discrepancy on the plan view drawing under (d), above. Show the distances between the corner as previously restored or reestablished and (1) the corner as restored or reestablished, and (2) to at least 2 of the witness monuments shown on the drawing in (d), above.

See drawing below.

(f) Was the corner restored through acceptance of (1) an obliterated evidence location, or, (2) a found perpetuated location?

Restored through acceptance of a found perpetuated location.

(g&h) Was the corner reestablished through lost corner proportionate methods? If so, show the method, including the directions and distances to other public land survey corners used as evidence or used for proportioning in determining the corner location?



(i) I, William B. Cochrane
(type or print name) certify that the corner location shown on this record was determined by me or under my direction and control and that this U.S. Public Land Survey Monument Record is correct and complete to the best of my knowledge and belief.

William B. Cochrane October 7, 1986
Signature Date

Survey requested by: Edward [Signature] 3-9-87
District Ranger Date

U.S. PUBLIC LAND SURVEY MONUMENT RECORD

Index No. A-23

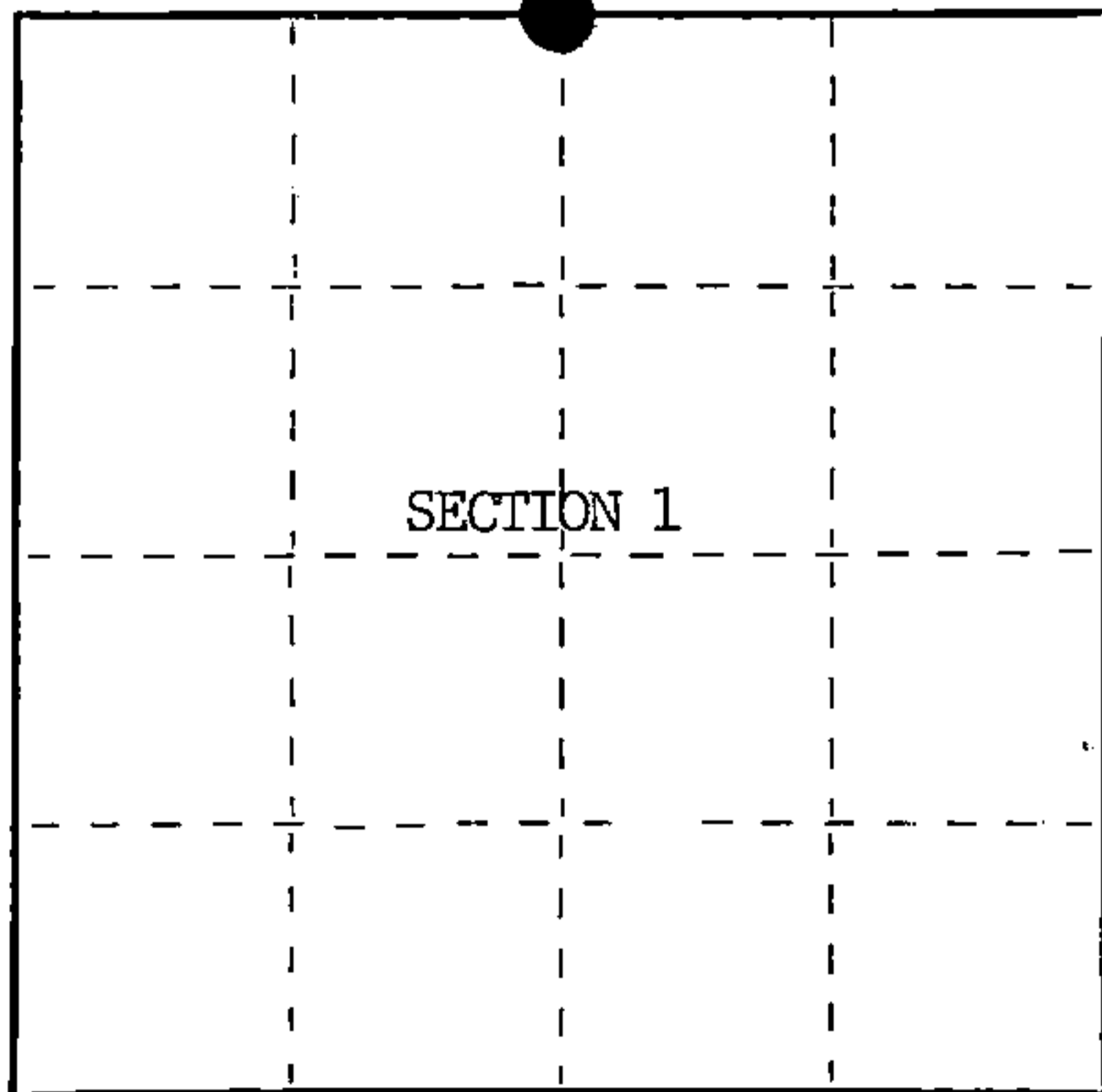
State of Wisconsin }
County of Forest } ss.

I, William B. Cochrane, do hereby
certify that on the 22nd day
of August, 19 85, I found
evidence of the North Quarter
corner of Section 1
Township 39, North, Range
14 East, Fourth Principal Meridian,
as described hereon; and that from this evidence
I established a new monument and accessories
as described hereon to perpetuate the original
location of this corner.

Resident witnesses:

Tony Tillman

State Plane Co-ordinates
N- 268,830.5140
E-2,334,652.2480



○ = Corner monument restored.

History of original corner establishment:

Original Government Survey in 1858 by Artemas Curtis. Dependent Resurvey in 1945 by Hugh Crawford. From the remains of the original bearing trees, set an iron post, 3 feet long, 2 ins. diam., 28 ins. in the ground, with a brass cap mkd; T40N, R14E, 1/4, S1, S36, T39N, 1945. From which the following bear;

W. Pine	9"	N11°15'E	109 lks.
Maple	12"	S 9°15'W	74 lks.

Description of corner evidence found:

Found monument as described and in place, from which the following bear;

W. Pine	18"	N11°15'E	71.94 feet
Maple	15"	S 9°15'W	48.84 feet-Cut down for Aerial Photo Project.

Description of monument and accessories I established to perpetuate the original location of this corner.

Blazed and scribed a new bearing tree;

Maple	16"	N76°E	32.94 feet
-------	-----	-------	------------

Re-set Steel Sign Post	NW	2.00 feet
------------------------	----	-----------

Dated at Hiles, Wis., this 5th day of March, 19 86

Signature William B. Cochrane Title Land Surveyor Registration No. S-1107
(County Surveyor, Registered Land Surveyor, or other duly authorized official)

Office of Register of Deeds, County of Forest, I hereby certify that the within
instrument was filed in this office for record on the 11th day of March, 19 87
at 3:30 o'clock P. M.

Paul Aschenbrenner
(Register of Deeds)

By _____ Deputy

FORM NO. 985-A

H.C. Miller Company
Milwaukee, Wisconsin

Stock No. 26273

DOCUMENT NUMBER 132315

44014360020

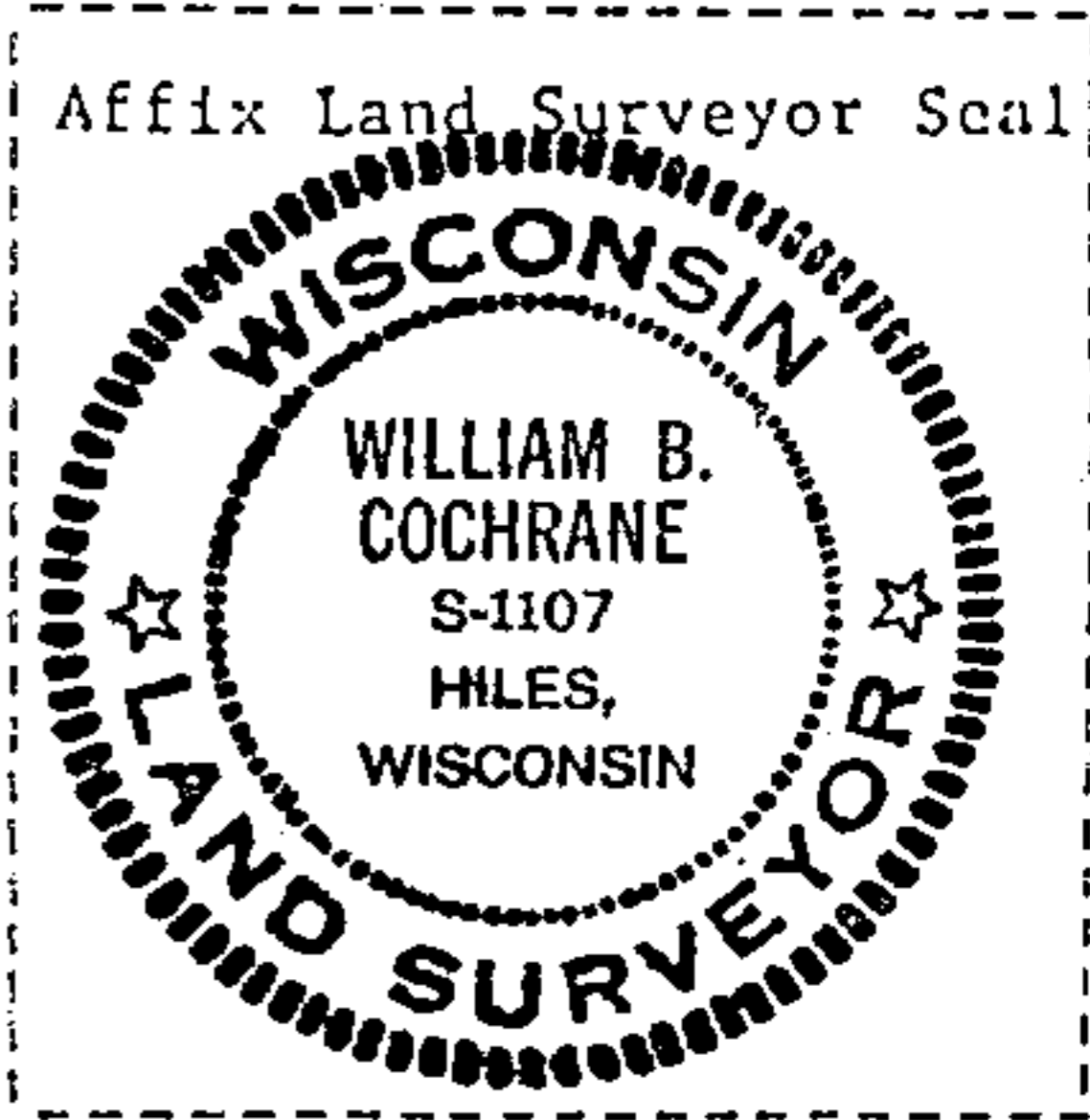
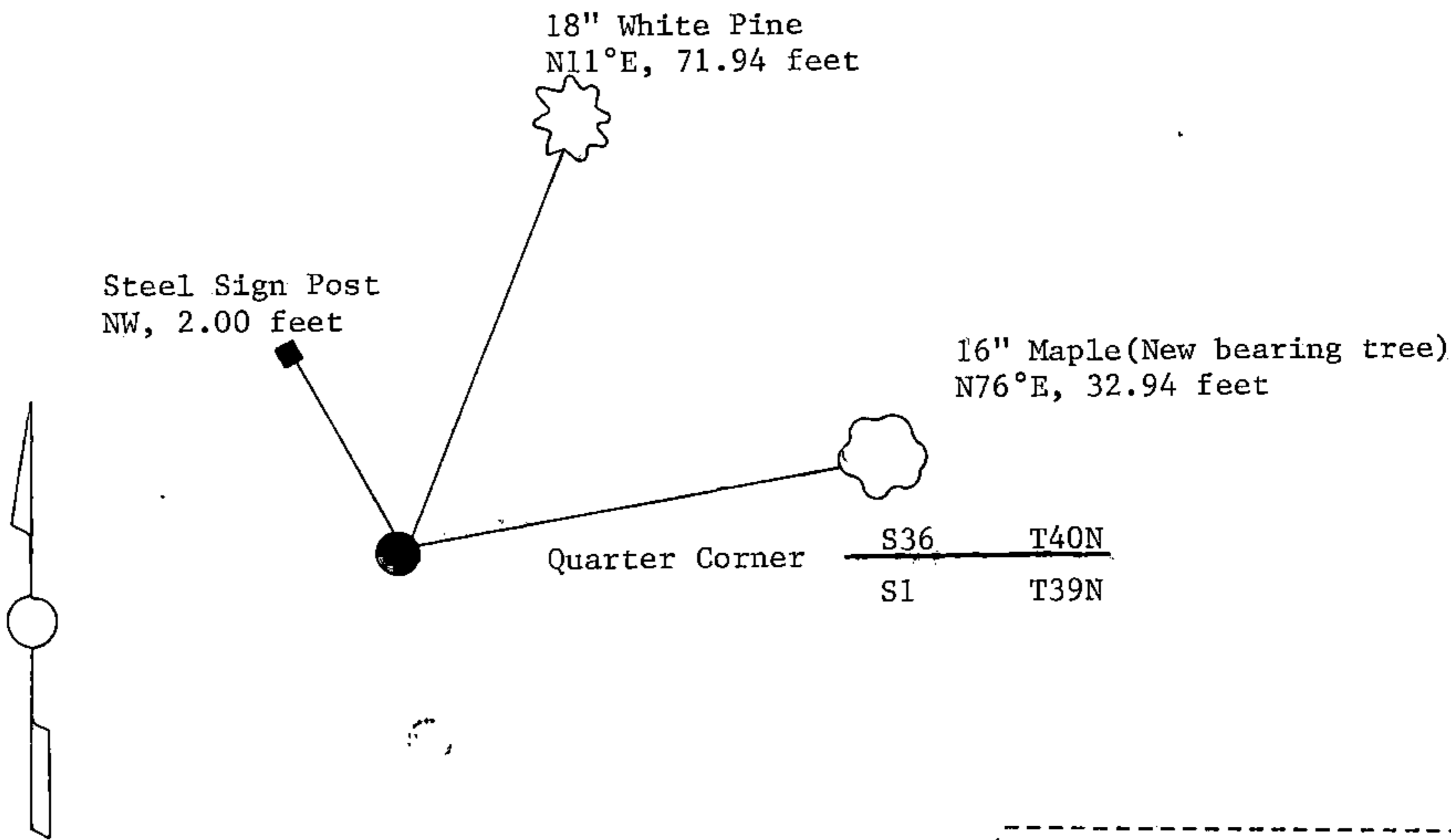
(e) Describe any material discrepancy between the location of the corner as restored or reestablished and the location of that corner as previously restored or reestablished by distance and direction. Show the discrepancy on the plan view drawing under (d), above. Show the distances between the corner as previously restored or reestablished and (1) the corner as restored or reestablished, and (2) to at least 2 of the witness monuments shown on the drawing in (d), above.

See drawing below.

(f) Was the corner restored through acceptance of (1) an obliterated evidence location, or, (2) a found perpetuated location?

Restored through acceptance of a found perpetuated location.

(g&h) Was the corner reestablished through lost corner proportionate methods? If so, show the method, including the directions and distances to other public land survey corners used as evidence or used for proportioning in determining the corner location?



(i) I, William B. Cochrane
(type or print name) certify that the corner location shown on this record was determined by me or under my direction and control and that this U.S. Public Land Survey Monument Record is correct and complete to the best of my knowledge and belief.

William B. Cochrane October 7, 1986
Signature Date

Survey requested by: David [Signature] 3-9-87
District Ranger Date