

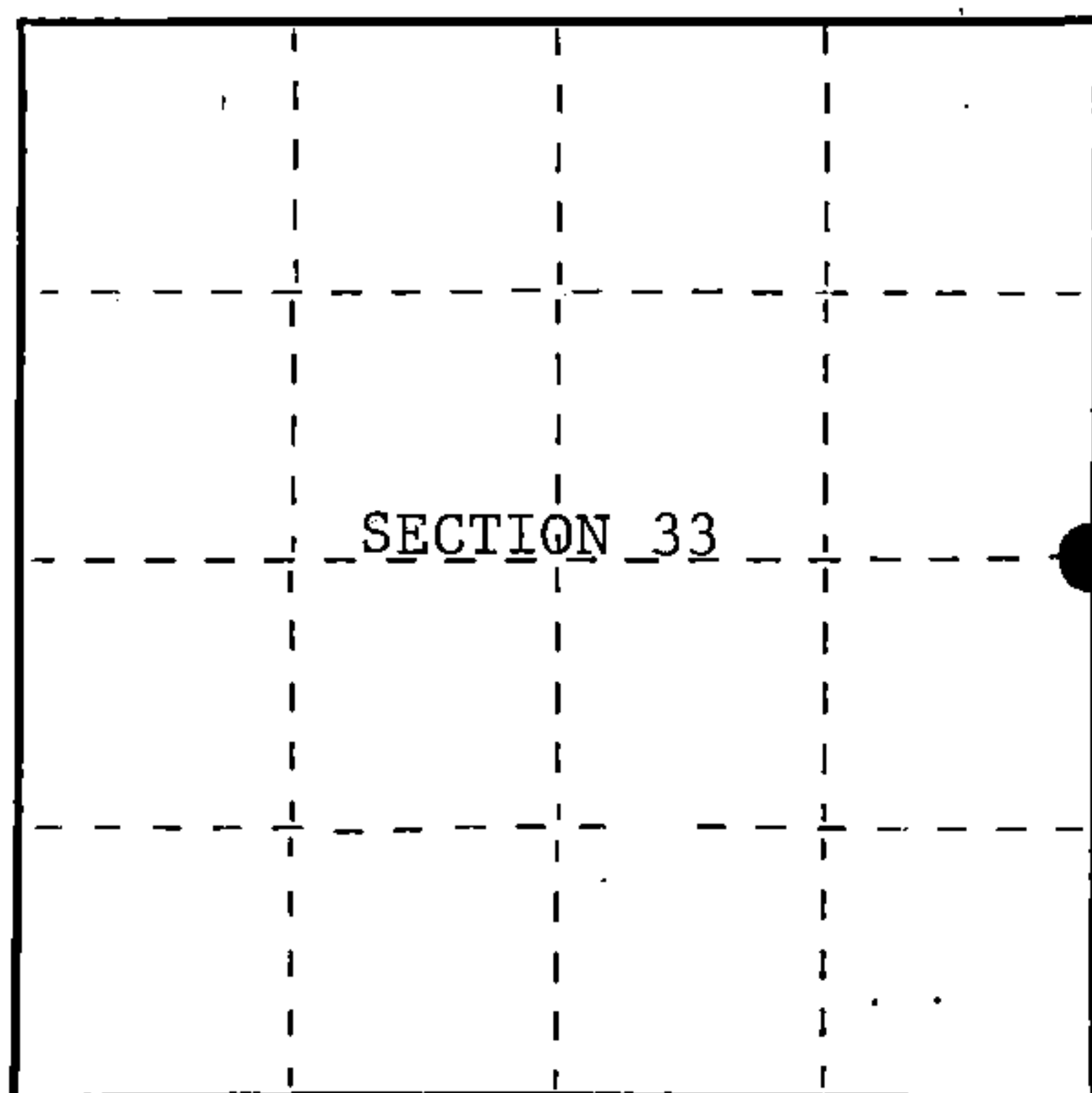
U.S. PUBLIC LAND SURVEY MONUMENT RECORD

Index No. X - 13

State of Wisconsin }
County of Forest } ss.

I, William B. Cochrane, do hereby certify that on the 30th day of June, 1987, I found evidence of the East Quarter corner of Section 33, Township 40 North, Range 14 East, Fourth Principal Meridian, as described hereon; and that from this evidence I established a new monument and accessories as described hereon to perpetuate the original location of this corner.

Resident witnesses:



○ = Corner monument restored.

History of original corner establishment:

Original Government Survey in 1865 by William E. Daugherty.

Dependent Resurvey in 1925 by Arthur Brown. At proportionate distance there is no remaining evidence of the original post or bearing trees. Corner point is not monumented. From the corner point, a Cedar post, 4 inches square, 18 inches above the ground, bears N32°15'E, 1.455 chains. This post was apparently set by the CCC boys.

Description of corner evidence found:

No corner evidence was recovered.

I re-established the corner position at proportionate distance and on line between the Northeast and Southeast Section Corners of Section 33.

Description of monument and accessories I established to perpetuate the original location of this corner.

At the corner position, set a 2½ inch diameter aluminum pipe monument, 3 feet long, 2½ feet in the ground, with an aluminum cap stamped; T40N, R14E, 1/4, S33, S34, 1987, S-1107. From which the following new blazed and scribed bearing trees bear;

Maple	13"	S40°W	32.75 feet
Maple	10"	N72°W	62.77 feet
Steel Sign Post		East	1.25 feet

Dated at Hiles, Wis., this 4th day of January, 1988

Signature William B. Cochrane Title Land Surveyor Registration No. S-1107
(County Surveyor, Registered Land Surveyor, or other duly authorized official)

Office of Register of Deeds, County of Forest, I hereby certify that the within instrument was filed in this office for record on the 18th day of March, 1988 at 12:50 o'clock P. M.

Paul Aschenbrenner
(Register of Deeds)

By _____ Deputy

FORM NO. 985-A

H.C. Miller Company

Stock No. 26273

DOCUMENT NUMBER 134860

44014332000

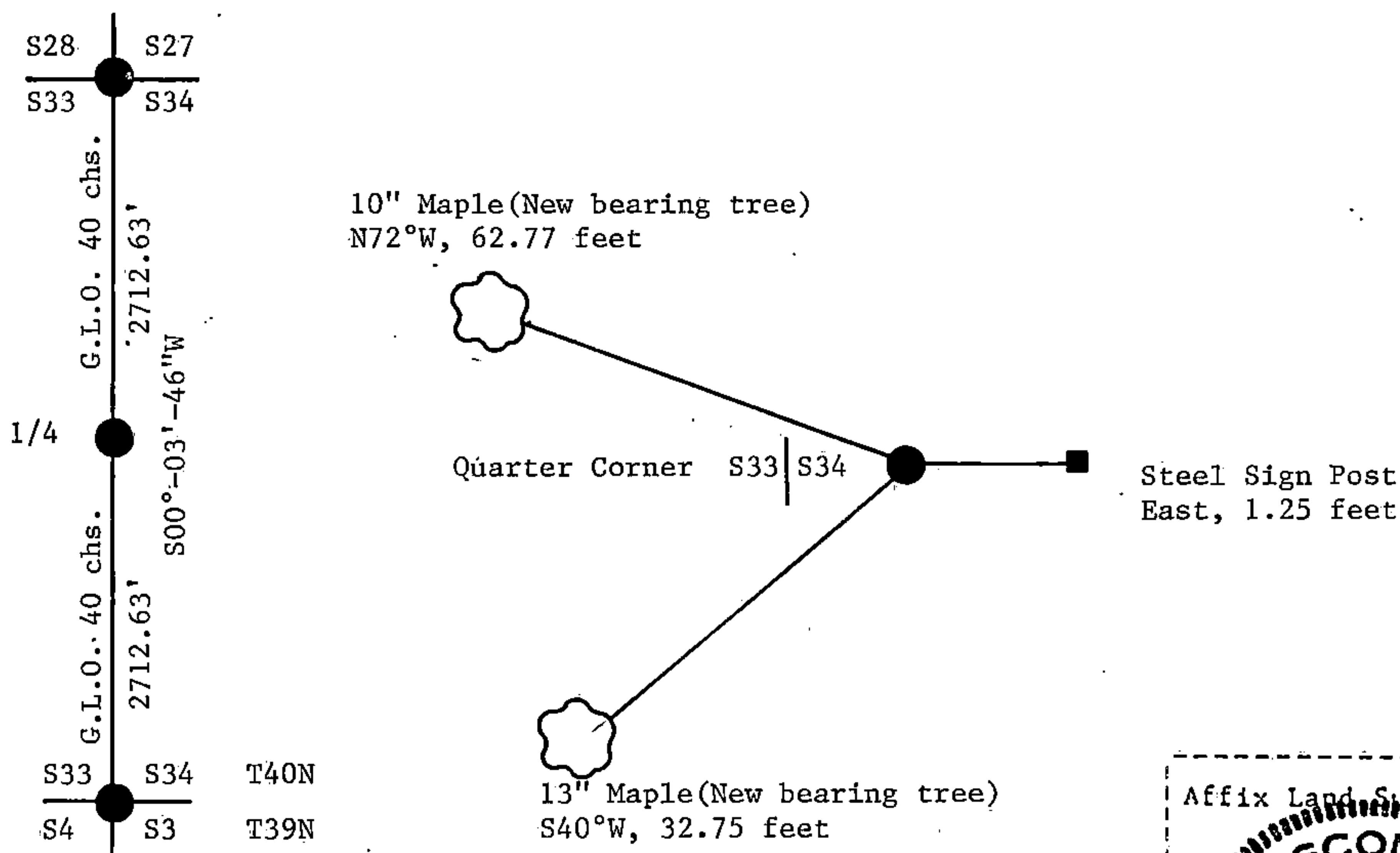
(e) Describe any material discrepancy between the location of the corner as restored or reestablished and the location of that corner as previously restored or reestablished by distance and direction. Show the discrepancy on the plan view drawing under (d), above. Show the distances between the corner as previously restored or reestablished and (1) the corner as restored or reestablished, and (2) to at least 2 of the witness monuments shown on the drawing in (d), above.

See drawing below.

(f) Was the corner restored through acceptance of (1) an obliterated evidence location, or, (2) a found perpetuated location?

(g&h) Was the corner reestablished through lost corner proportionate methods? If so, show the method, including the directions and distances to other public land survey corners used as evidence or used for proportioning in determining the corner location?

Re-established through lost corner proportionate methods.



(i) I, William B. Cochrane
(type or print name) certify that the corner location shown on this record was determined by me or under my direction and control and that this U.S. Public Land Survey Monument Record is correct and complete to the best of my knowledge and belief.

William B. Cochrane Jan. 12, 1988
Signature Date

Survey requested by: Edward [Signature] 3-8-88
District Ranger Date