

U.S. PUBLIC LAND SURVEY MONUMENT RECORD

Index No. Z - 13

State of Wisconsin }
 County of Forest } ss.

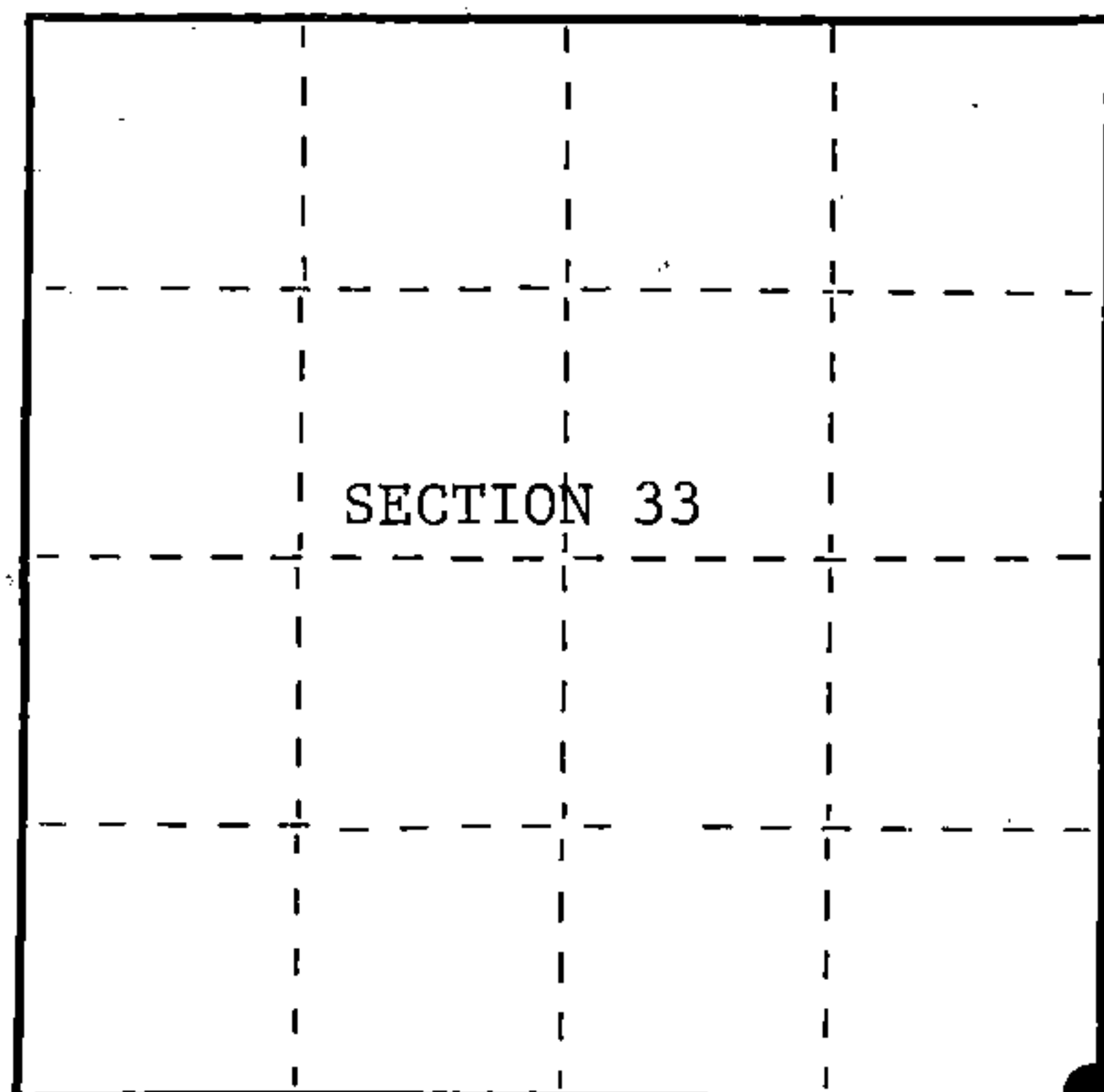
I William B. Cochrane, do hereby
 certify that on the 30th day
 of June, 1987, I found
 evidence of the Southeast Section
 corner of Section 33
 Township 40, North, Range
14 East, Fourth Principal Meridian,
 as described hereon; and that from this evidence
 I established a new monument and accessories
 as described hereon to perpetuate the original
 location of this corner.

Resident witnesses:

.....

.....

.....



○ = Corner monument restored.

History of original corner establishment:

Original Government Survey in 1858 by Alfred Millard. Dependent Resurvey in 1945
 by Hugh Crawford. From original bearing tree evidence, Set an iron post, 3 feet long,
 2 inches in diameter, 26 inches in the ground, with a brass cap marked; T40N, R14E,
 S3, S4, S33, S34, T39N, 1945. Blazed and scribed the following new bearing trees;

Spruce	9"	N29°30'E	30.50 lks.
Spruce	8"	S44°15'E	38.50 lks.
Cedar	12"	S43°15'W	76.00 lks.
Cedar	12"	N46°00'W	63.00 lks.

Description of corner evidence found:

On 4-30-74, William B. Cochrane, blazed and scribed the following new bearing tree;

Cedar	8"	S61°W	33.60 feet
-------	----	-------	------------

6-30-87, Found the monument as described and in place, from which the following bear;

Spruce (Stump)	S44°15'E	25.41 feet	Steel Sign Post, North, 0.50 feet
Spruce (Snag)	N29°30'E	20.13 feet	4"x4"x48" Scribed Cedar Post,
Cedar	12" S61°W	33.60 feet	South and alongside monument
Cedar	14" N46°W	41.58 feet	

Description of monument and accessories I established to perpetuate the original location of this corner.

None

Dated at Hiles, Wis., this 4th day of January, 1988

Signature William B. Cochrane Title Land Surveyor Registration No. S-1107
 (County Surveyor, Registered Land Surveyor, or other duly authorized official)

Office of Register of Deeds, County of Forest, I hereby certify that the within
 instrument was filed in this office for record on the 18th day of March, 1988
 at 12:50 o'clock P. M.

Paul Ascherbrenner
 (Register of Deeds)

By _____ Deputy

FORM NO. 985-A

H.C. Miller Company
 ENGINEERS

Stock No. 26273

DOCUMENT NUMBER 134862

44014 330000

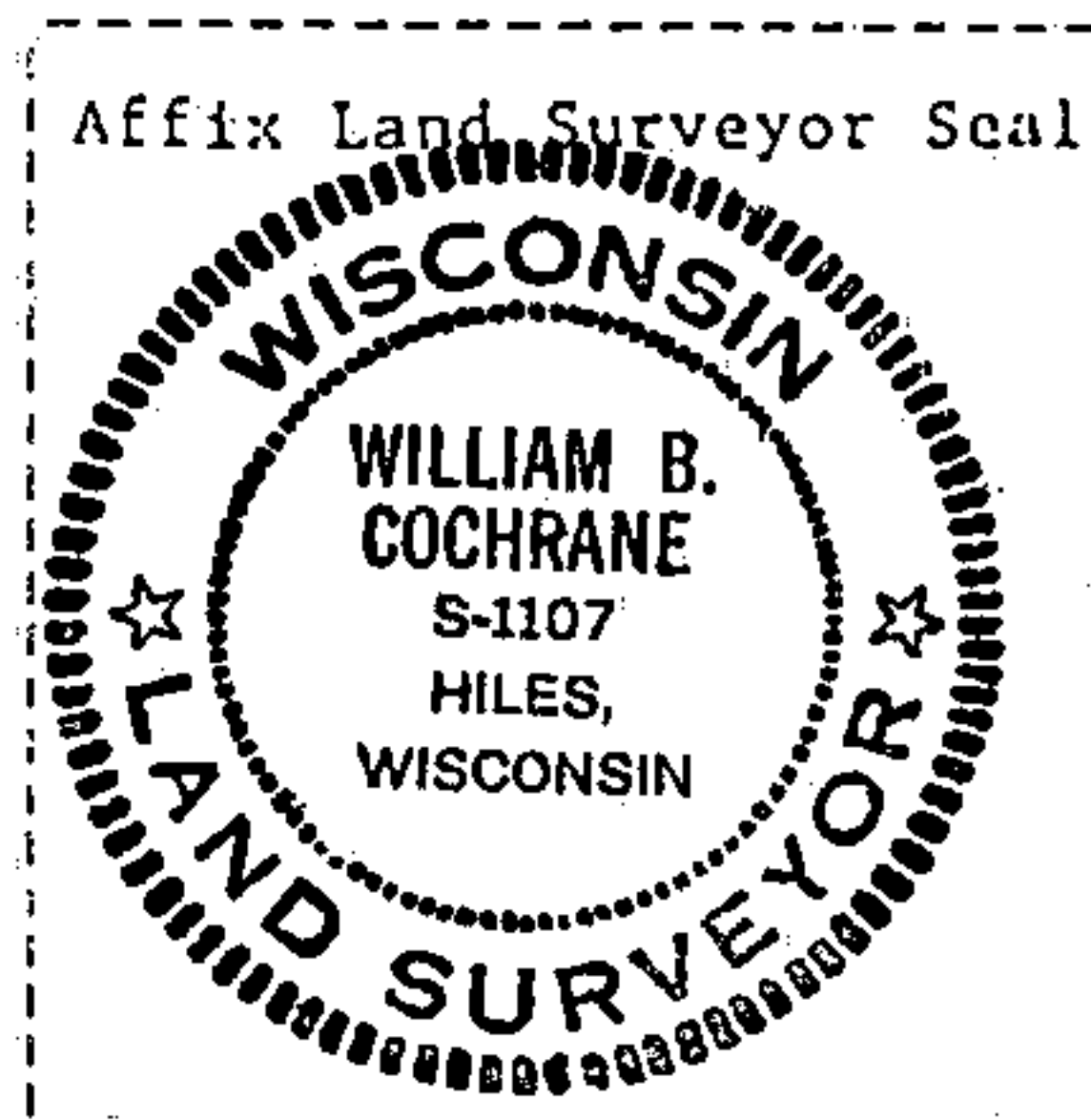
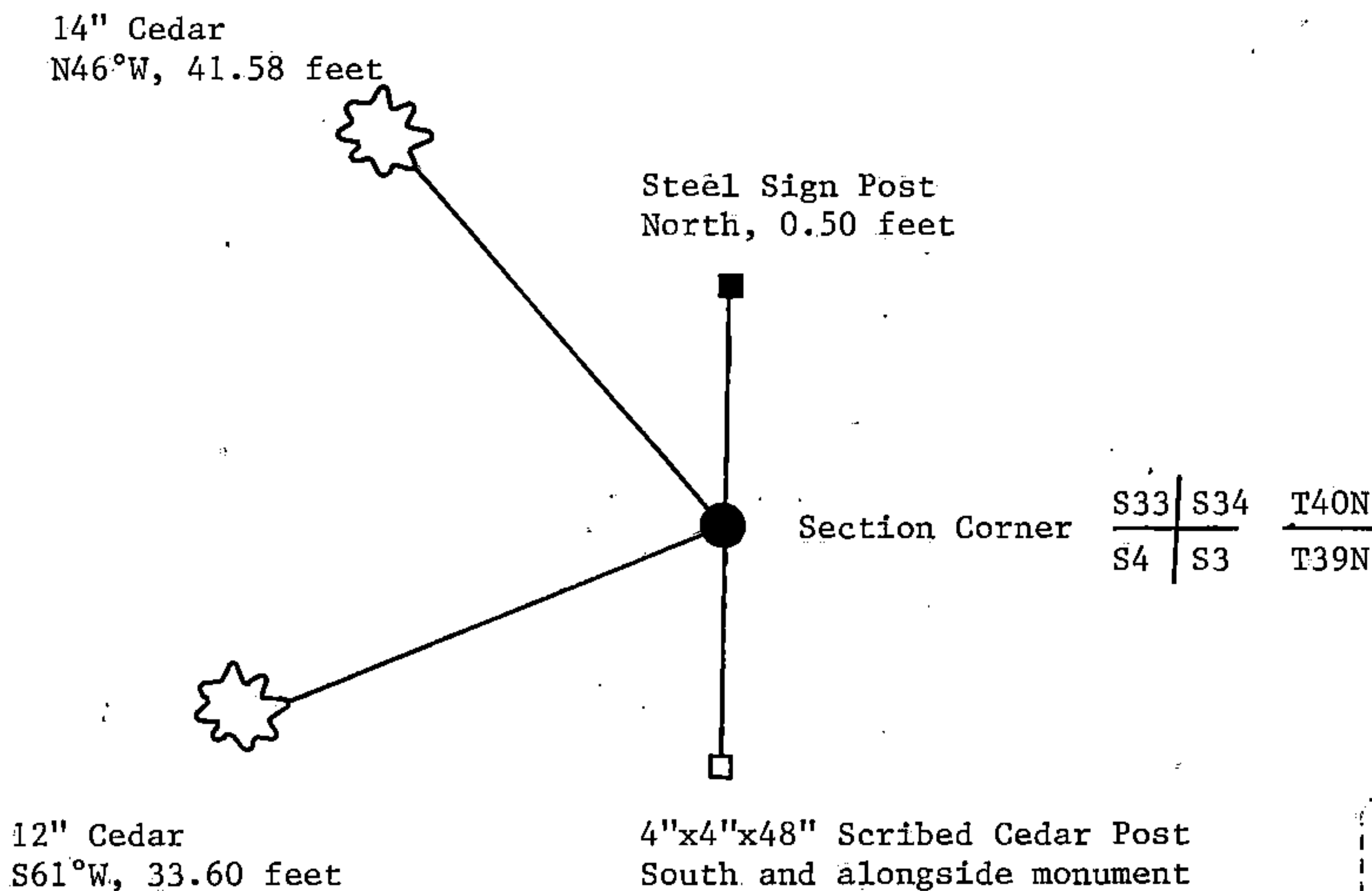
(e) Describe any material discrepancy between the location of the corner as restored or reestablished and the location of that corner as previously restored or reestablished by distance and direction. Show the discrepancy on the plan view drawing under (d), above. Show the distances between the corner as previously restored or reestablished and (1) the corner as restored or reestablished, and (2) to at least 2 of the witness monuments shown on the drawing in (d), above.

See drawing below.

(f) Was the corner restored through acceptance of (1) an obliterated evidence location, or, (2) a found perpetuated location?

Restored through acceptance of a found perpetuated location.

(g&h) Was the corner reestablished through lost corner proportionate methods? If so, show the method, including the directions and distances to other public land survey corners used as evidence or used for proportioning in determining the corner location?



(i) William B. Cochrane
(type or print name) certify that the corner location shown on this record was determined by me or under my direction and control and that this U.S. Public Land Survey Monument Record is correct and complete to the best of my knowledge and belief.

William B. Cochrane Jan. 12, 1988
Signature Date

Survey requested by: Edward [Signature] 3-8-88
District Ranger Date

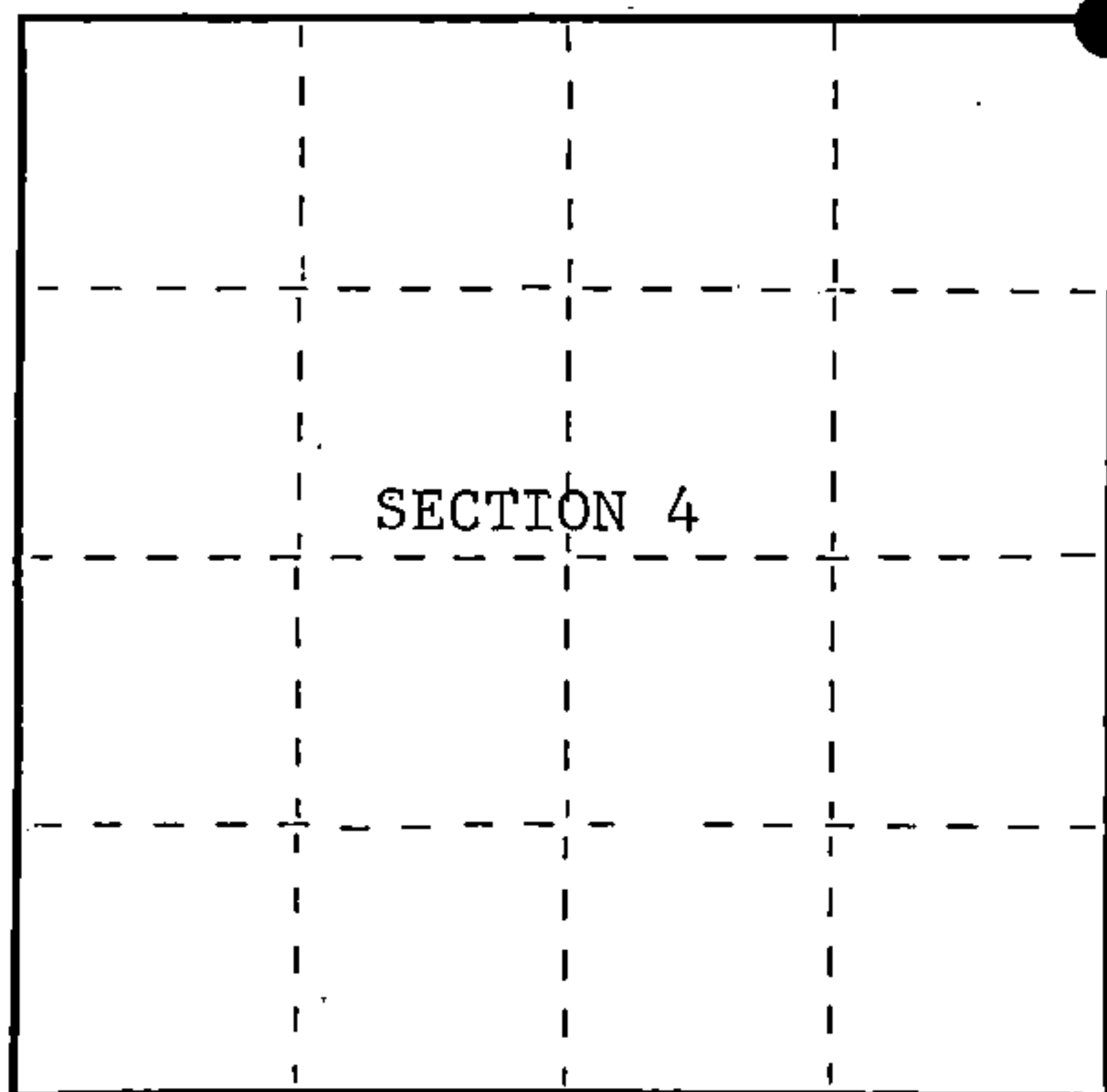
U.S. PUBLIC LAND SURVEY MONUMENT RECORD

Index No. A - 13

State of Wisconsin }
County of Forest } ss.

I, William B. Cochrane, do hereby
certify that on the 30th day
of June, 1987, I found
evidence of the Northeast Section
corner of Section 4
Township 39, North, Range
14 East, Fourth Principal Meridian,
as described hereon; and that from this evidence
I established a new monument and accessories
as described hereon to perpetuate the original
location of this corner.

Resident witnesses:



○ = Corner monument restored.

History of original corner establishment:

Original Government Survey in 1858 by Alfred Millard. Dependent Resurvey in 1945
by Hugh Crawford. From original bearing tree evidence, set an iron post, 3 feet long,
2 inches in diameter, 26 inches in the ground, with a brass cap marked; T40N, R14E,
S3, S4, S33, S34, T39N, 1945. Blazed and scribed the following new bearing trees;

Spruce	9"	N29°30'E	30.50 lks.
Spruce	8"	S44°15'E	38.50 lks.
Cedar	12"	S43°15'W	76.00 lks.
Cedar	12"	N46°00'W	63.00 lks.

Description of corner evidence found:

On April 30th, 1974, William B. Cochrane blazed and scribed the following new
bearing tree;

Cedar	8"	S61°W	33.60 feet
-------	----	-------	------------

On June 30th, 1987, found the monument as described and in place, from which the
following bear;

Spruce(Stump)		S44°15'E	25.41 feet	Steel Sign Post, North, 0.50 feet
Spruce(Snag)		N29°30'E	20.13 feet	
Cedar	12"	S61°00'W	33.60 feet	4"x4"x48" Scribed Cedar Post,
Cedar	14"	N46°00'W	41.58 feet	South, alongside monument

Description of monument and accessories I established to perpetuate the original location of this corner.

None

Dated at Hiles, Wis., this 4th day of January, 1988

Signature William B. Cochrane Title Land Surveyor Registration No. S-1107
(County Surveyor, Registered Land Surveyor, or other duly authorized official)

Office of Register of Deeds, County of Forest, I hereby certify that the within
instrument was filed in this office for record on the 18th day of March, 1988
at 12:50 o'clock P. M.

Paul Aschenbrenner
(Register of Deeds)

By _____ Deputy

FORM NO. 985-A

H.C. Miller Company
BUREAU OF LAND SURVEY

Stock No. 26273

DOCUMENT NUMBER 134835

44014330000

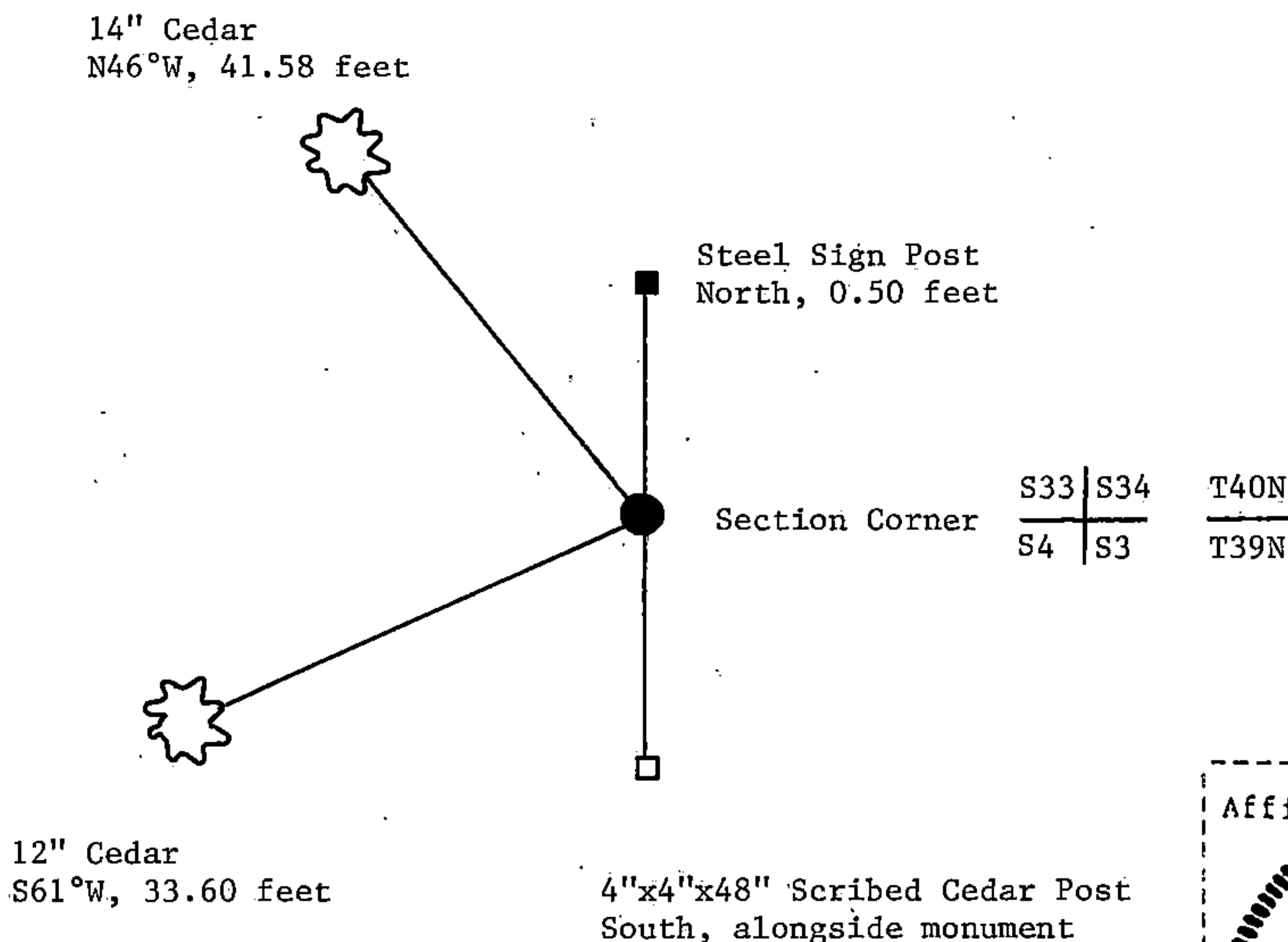
- (e) Describe any material discrepancy between the location of the corner as restored or reestablished and the location of that corner as previously restored or reestablished by distance and direction. Show the discrepancy on the plan view drawing under (d), above. Show the distances between the corner as previously restored or reestablished and (1) the corner as restored or reestablished, and (2) to at least 2 of the witness monuments shown on the drawing in (d), above.

See drawing below.

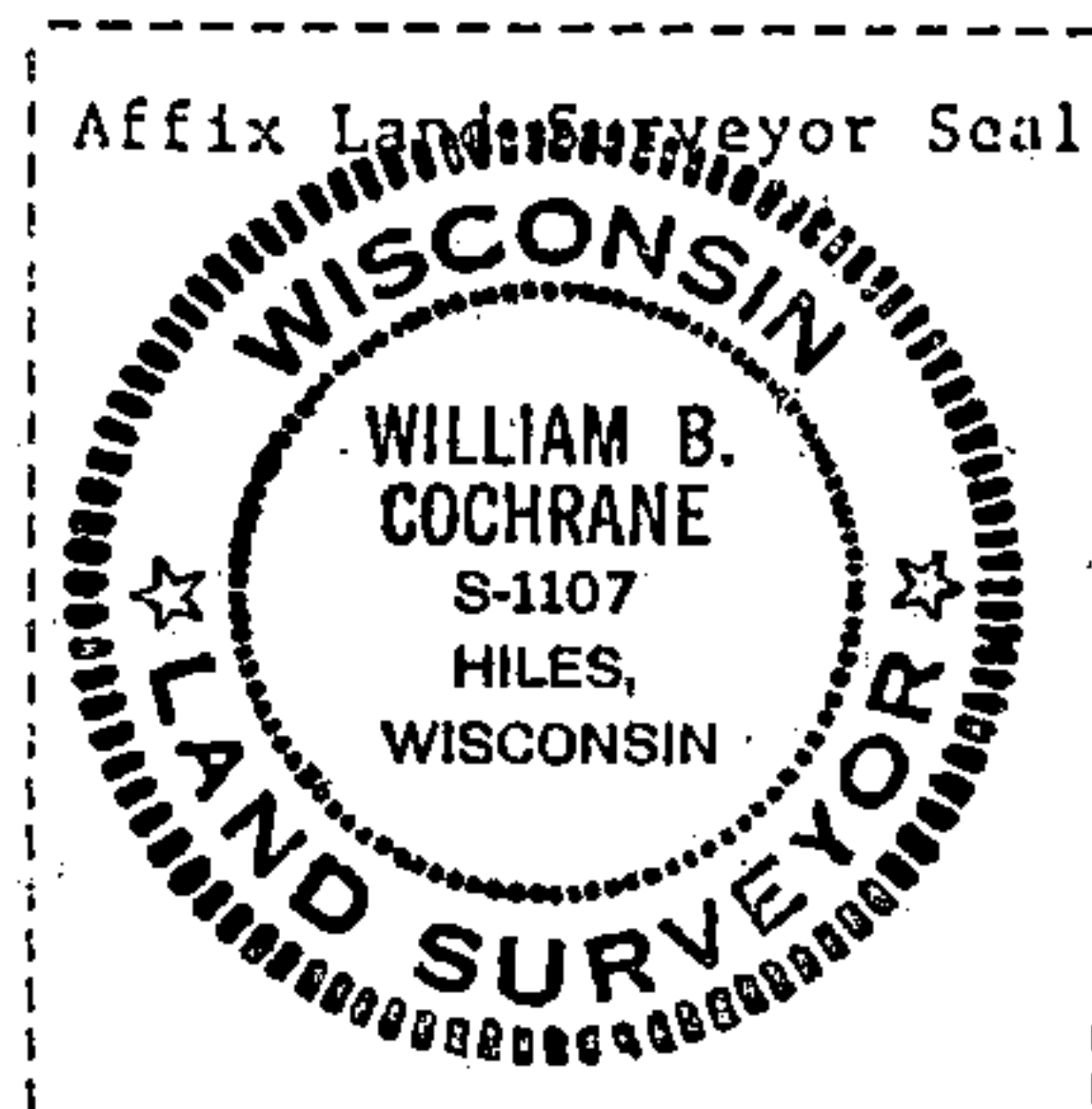
- (f) Was the corner restored through acceptance of (1) an obliterated evidence location, or, (2) a found perpetuated location?

Restored through acceptance of a found perpetuated location.

- (g&h) Was the corner reestablished through lost corner proportionate methods? If so, show the method, including the directions and distances to other public land survey corners used as evidence or used for proportioning in determining the corner location?



- (i) I, William B. Cochrane
(type or print name) certify that the corner location shown on this record was determined by me or under my direction and control and that this U.S. Public Land Survey Monument Record is correct and complete to the best of my knowledge and belief.



William B. Cochrane Jan. 12, 1988
Signature Date

Survey requested by: Edward [Signature] 3-8-88
District Ranger Date