

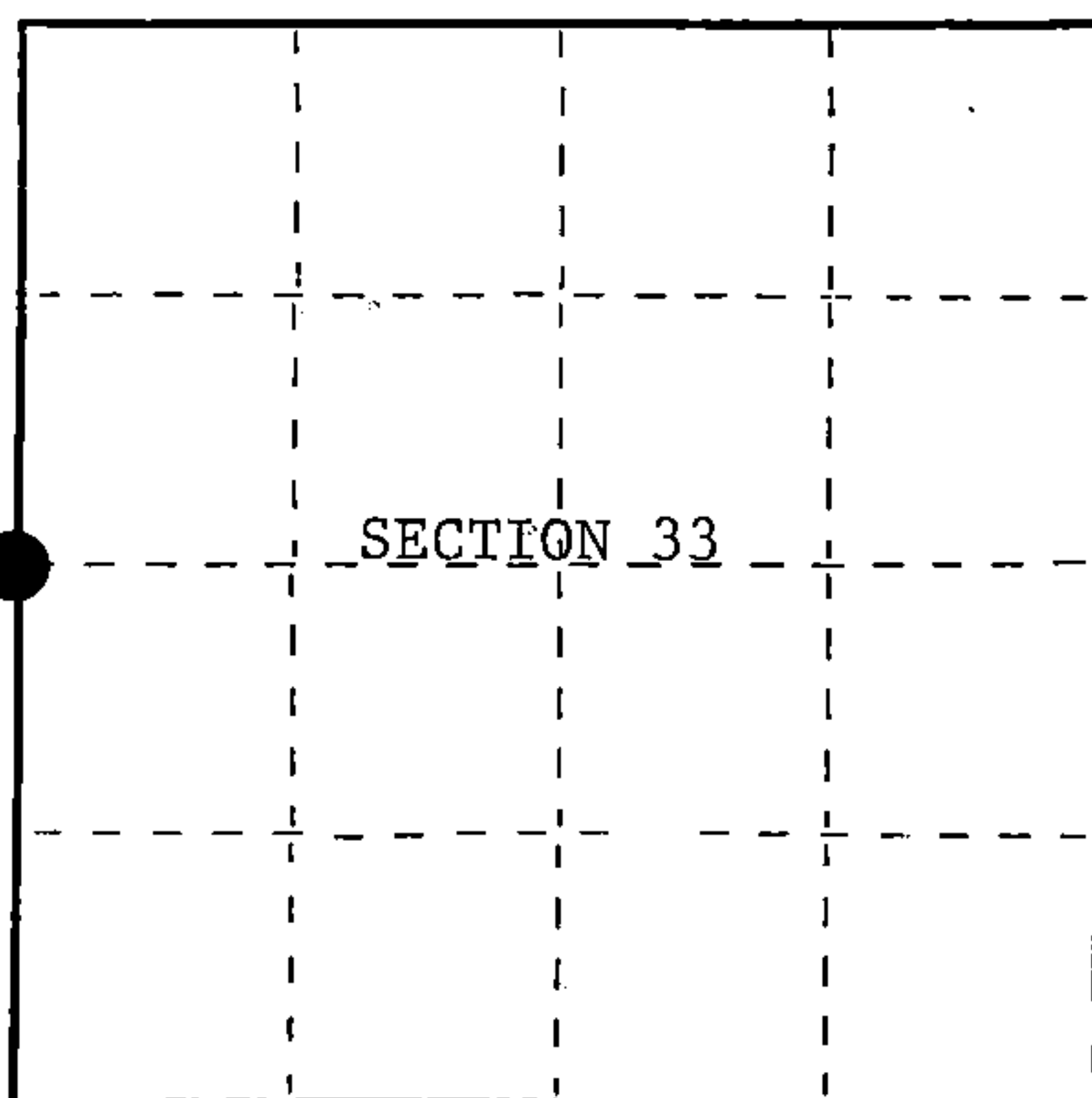
U.S. PUBLIC LAND SURVEY MONUMENT RECORD

X - 9
Index No.State of Wisconsin }
County of Forest } ss.

I, William B. Cochran, do hereby
 certify that on the 29th day
 of June, 1987, I found
 evidence of the West Quarter
 corner of Section 33
 Township 40, North, Range
14 East, Fourth Principal Meridian,
 as described hereon; and that from this evidence
 I established a new monument and accessories
 as described hereon to perpetuate the original
 location of this corner.

Resident witnesses:

.....



○ = Corner monument restored.

History of original corner establishment:

Original Government Survey in 1865 by William E. Daugherty. North between Sections 32 and 33, at 40 chains, set Quarter Section Post to Sections 32 and 33, from which the following bear;

Cedar	12"	S39°W	20 lks.
Cedar	10"	N 9°E	18 lks.

Description of corner evidence found:

No corner evidence was recovered.

I re-established the corner position at proportionate distance and on line between the Northwest and Southwest Section Corners of Section 33.

Description of monument and accessories I established to perpetuate the original location of this corner.

At the corner position, set a 2½ inch diameter aluminum pipe monument, 3 feet long, 2½ feet in the ground, with an aluminum cap stamped; T40N, R14E, 1/4, S32, S33, 1987, S-1107. From which the following new blazed and scribed bearing trees bear;

Cedar	8"	S11°E	19.14 feet
Cedar	14"	S83°W	29.58 feet
Steel Sign Post		North	1.00 feet

Dated at Hiles, Wis., this 4th day of January, 1988

Signature William B. Cochran Title Land Surveyor Registration No. S-1107
 (County Surveyor, Registered Land Surveyor, or other duly authorized official)

Office of Register of Deeds, County of Forest, I hereby certify that the within
 instrument was filed in this office for record on the 18th day of March, 1988
 at 12:50 o'clock P. M.

Paul Aschenbrenner
 (Register of Deeds)

By _____ Deputy

FORM NO. 985-A

H.C. Miller Company
Bismarck, N.D.

Stock No. 26273

DOCUMENT NUMBER 134859

44014 32 2000

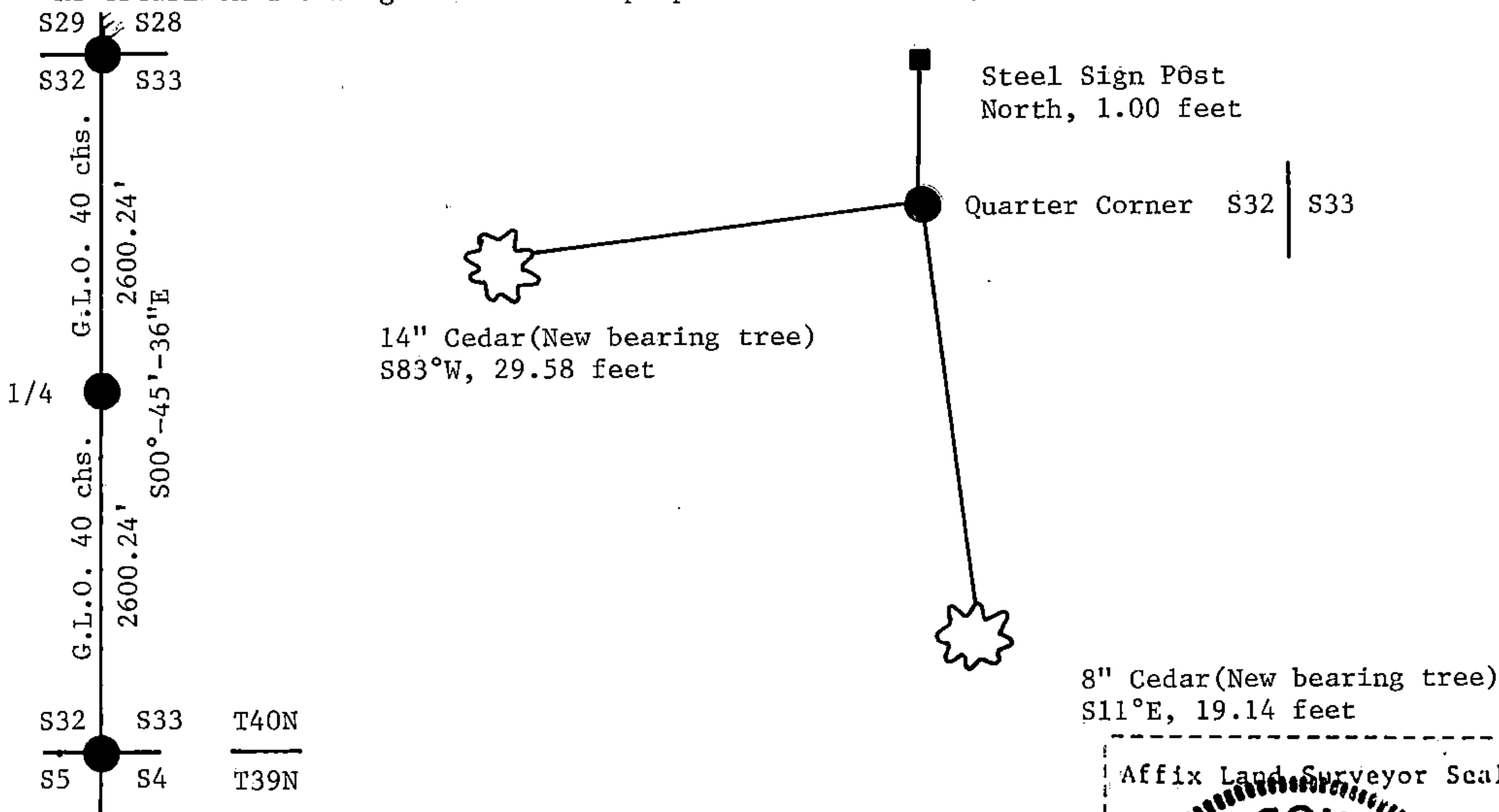
(e) Describe any material discrepancy between the location of the corner as restored or reestablished and the location of that corner as previously restored or reestablished by distance and direction. Show the discrepancy on the plan view drawing under (d), above. Show the distances between the corner as previously restored or reestablished and (1) the corner as restored or reestablished, and (2) to at least 2 of the witness monuments shown on the drawing in (d), above.

See drawing below.

(f) Was the corner restored through acceptance of (1) an obliterated evidence location, or, (2) a found perpetuated location?

(g&h) Was the corner reestablished through lost corner proportionate methods? If so, show the method, including the directions and distances to other public land survey corners used as evidence or used for proportioning in determining the corner location?

Re-established through lost corner proportionate methods.



(i) I, William B. Cochrane
(type or print name) certify that the corner location shown on this record was determined by me or under my direction and control and that this U.S. Public Land Survey Monument Record is correct and complete to the best of my knowledge and belief.



William B. Cochrane Jan. 12, 1988
Signature Date

Survey requested by: Edward Arger 3-8-88
District Ranger Date