

U.S. PUBLIC LAND SURVEY MONUMENT RECORD

Index No. Z-9

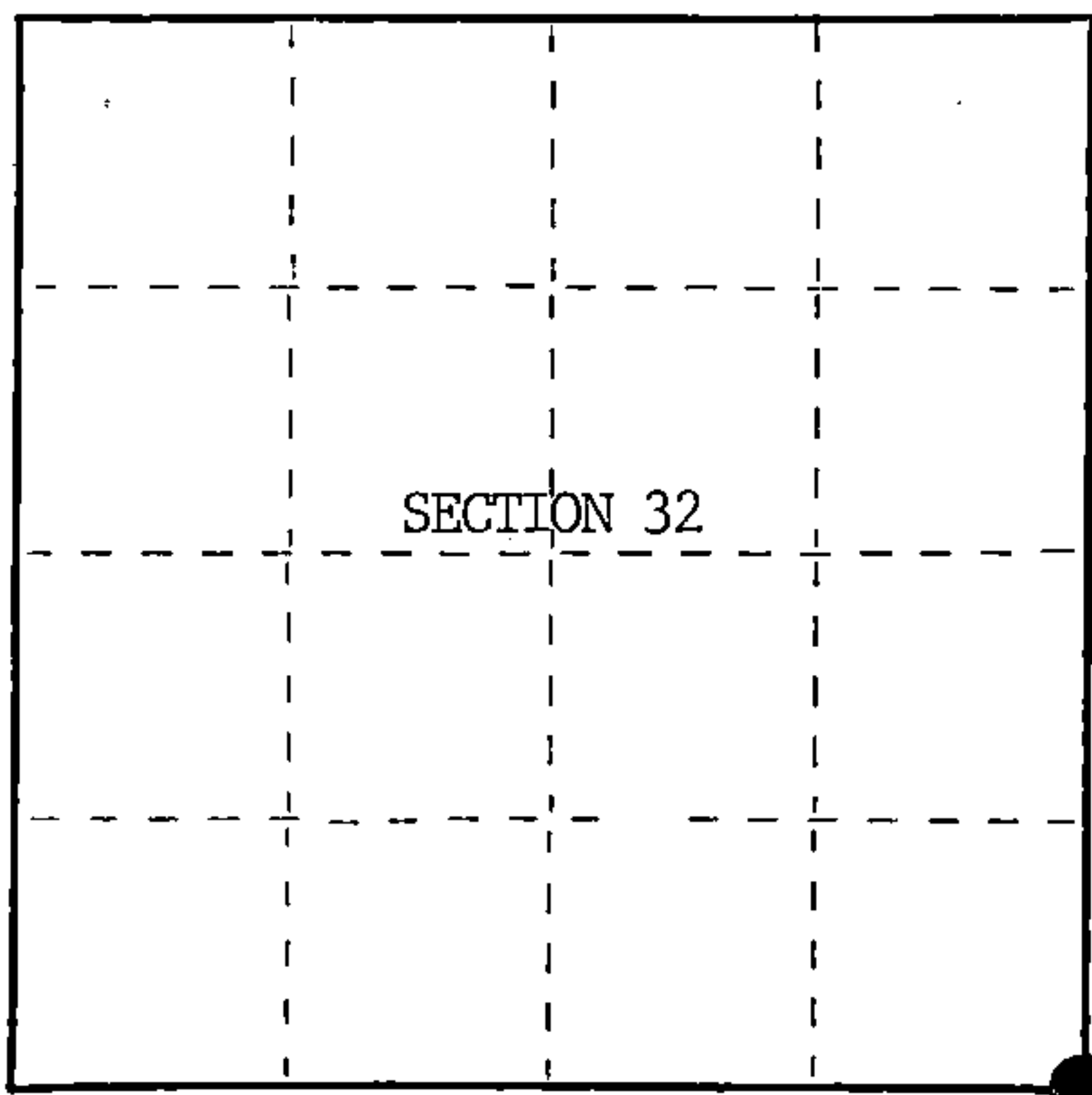
State of Wisconsin }
County of Forest } ss.

I, William B. Cochrane, do hereby
certify that on the 8th day
of July, 1985, I found
evidence of the Southeast Section
corner of Section 32
Township 40 North, Range
14 East, Fourth Principal Meridian,
as described hereon; and that from this evidence
I established a new monument and accessories
as described hereon to perpetuate the original
location of this corner.

Resident witnesses:

Tony Tillman

State Plane Co-ordinates
N- 268,451.4760
E-2,316,320.7060



○ = Corner monument restored.

History of original corner establishment:
Original Government Survey in 1858 by Alfred Millard.

Dependent Resurvey in 1945 by Hugh Crawford.

Corner restored on May 10th, 1974, by Jean Resvick, a Registered
Land Surveyor with the U.S. Forest Service.
See Certified Land Corner Restoration Certificate #105818, filed in
the Registrar of Deeds Office, in the Forest County Courthouse.

Description of corner evidence found:

Found monument as described and in place, from which the following bear;

Tamarack	15"	S21°E	178.20 feet
W. Pine	16"	S78°W	26.52 feet

Description of monument and accessories I established to perpetuate the original location of this corner.

Blazed and scribed a new bearing tree;

Tamarack	14"	N 5°E	66.96 feet
Reset Steel Sign Post		NW	2.00 feet

Dated at Hiles, Wis., this 27th day of February, 1986.

Signature William B. Cochrane Title Land Surveyor Registration No. S-1107
(County Surveyor, Registered Land Surveyor, or other duly authorized official)

Office of Register of Deeds, County of Forest, I hereby certify that the within
instrument was filed in this office for record on the 11th day of March, 1987
at 3:30 o'clock P. M.

Paul Achenbrenner
(Register of Deeds)

By Deputy

FORM NO. 985-A
H.C. Miller Company
ST. LOUIS, MO.

Stock No. 26273

DOCUMENT NUMBER 132459

44014320000

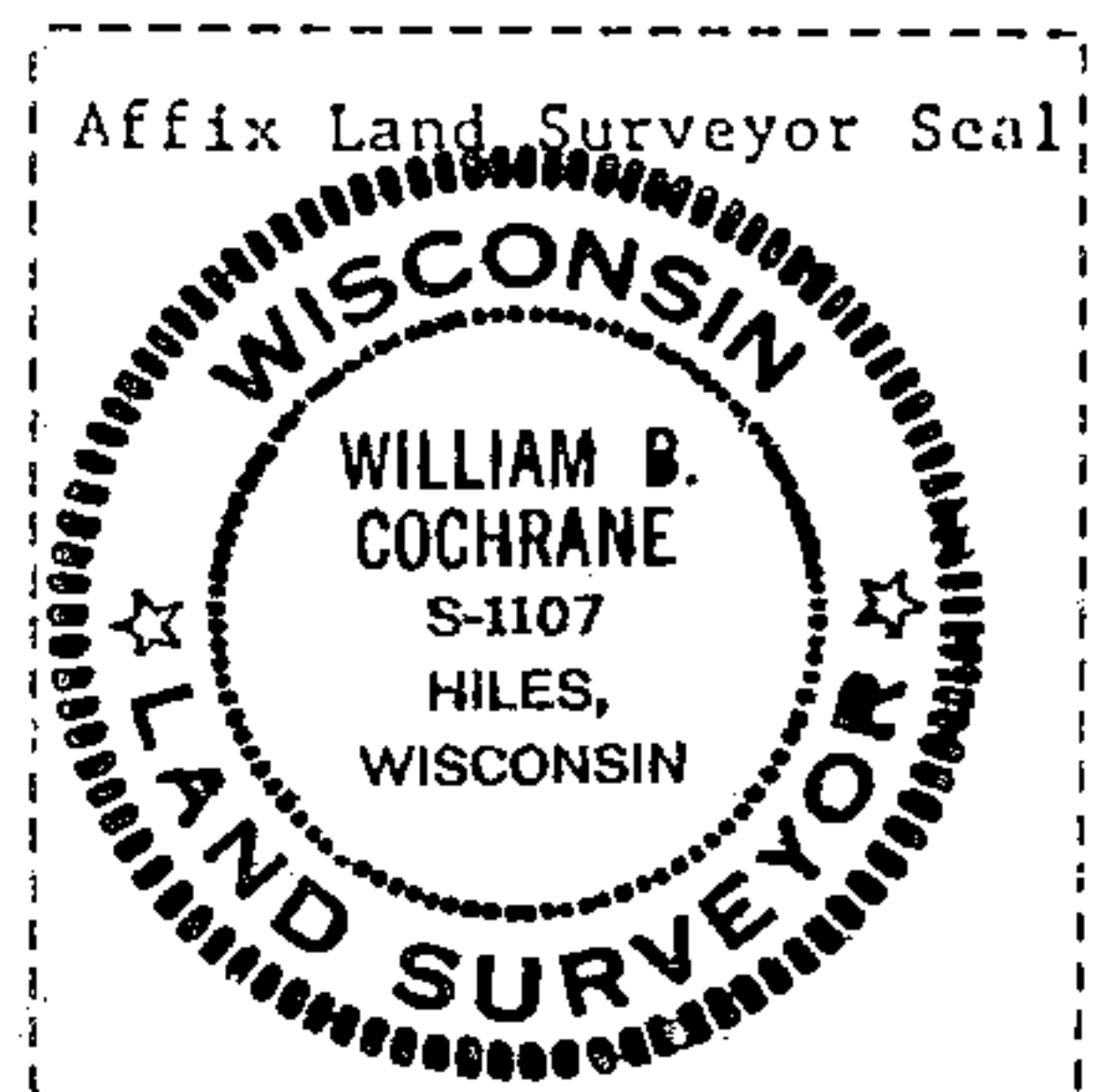
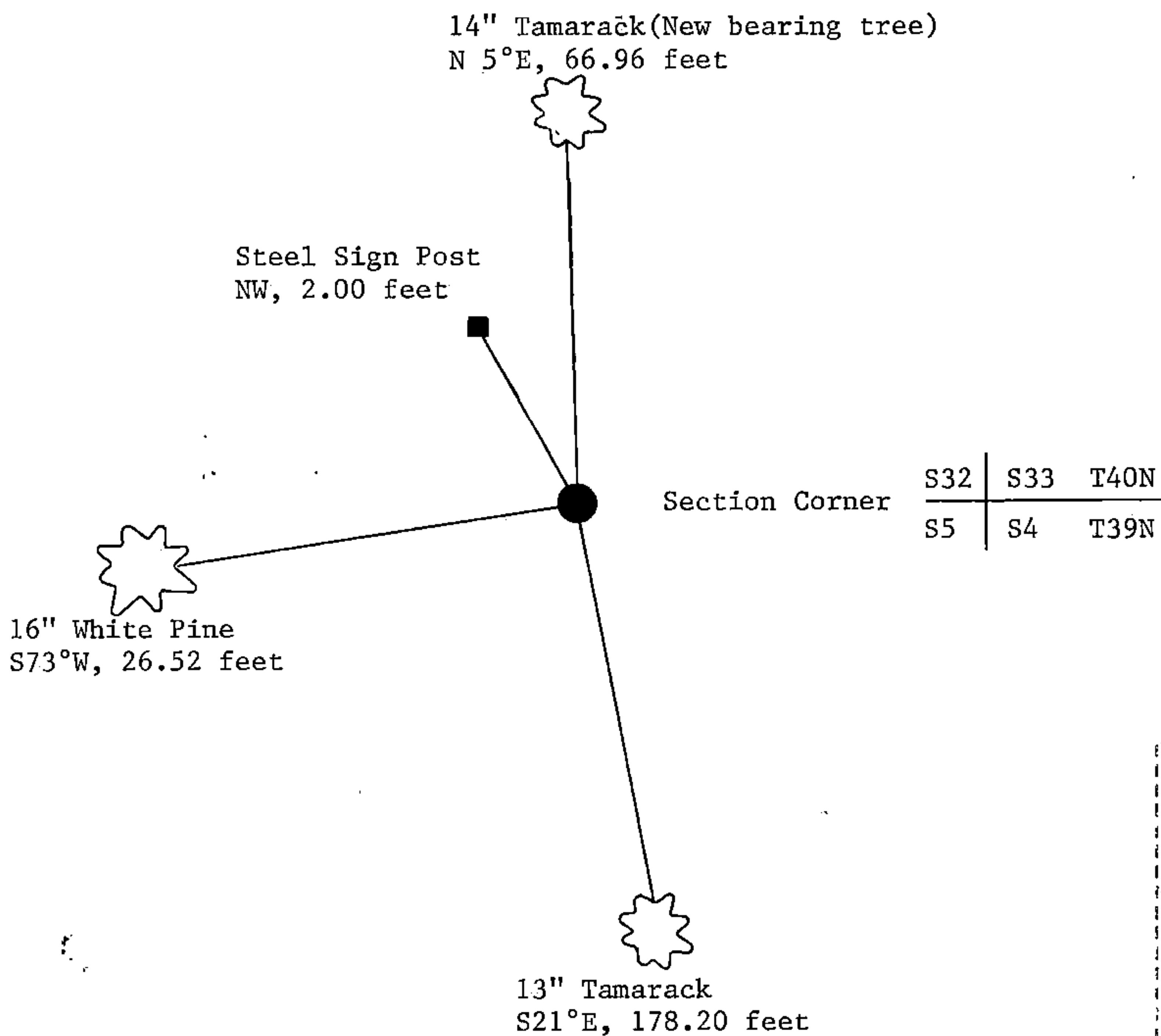
- (e) Describe any material discrepancy between the location of the corner as restored or reestablished and the location of that corner as previously restored or reestablished by distance and direction. Show the discrepancy on the plan view drawing under (d), above. Show the distances between the corner as previously restored or reestablished and (1) the corner as restored or reestablished, and (2) to at least 2 of the witness monuments shown on the drawing in (d), above.

See drawing below.

- (f) Was the corner restored through acceptance of (1) an obliterated evidence location, or, (2) a found perpetuated location?

Restored through acceptance of a found perpetuated location.

- (g&h) Was the corner reestablished through lost corner proportionate methods? If so, show the method, including the directions and distances to other public land survey corners used as evidence or used for proportioning in determining the corner location?



- (i) 1. William B. Cochrane
(type or print name) certify that the corner location shown on this record was determined by me or under my direction and control and that this U.S. Public Land Survey Monument Record is correct and complete to the best of my knowledge and belief.

Signature William B. Cochrane Date October 7, 1986

Survey requested by; Edward Berger 3-9-87
District Ranger Date

Date _____

U.S. PUBLIC LAND SURVEY MONUMENT RECORD

Index No. A-9

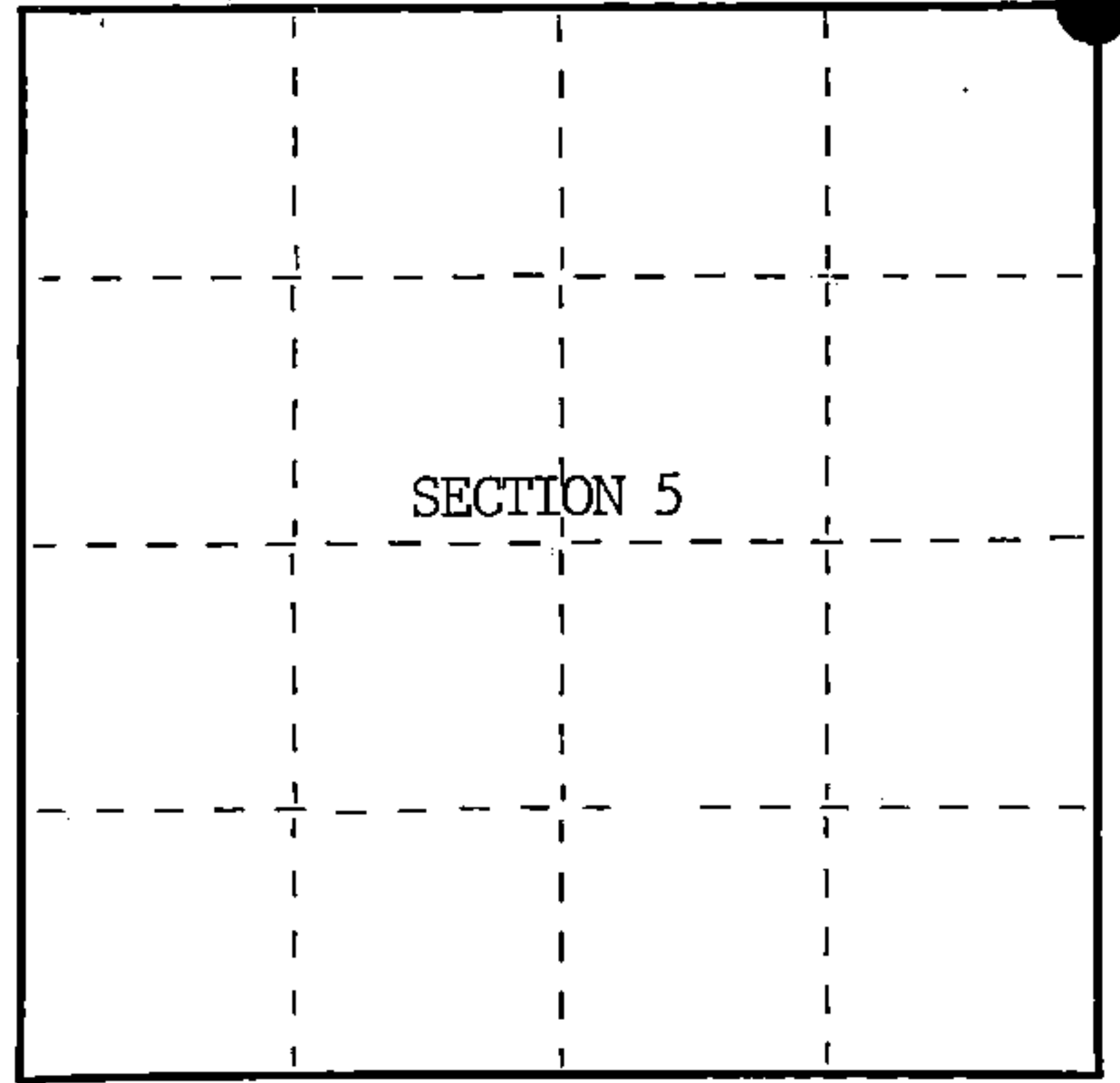
State of Wisconsin }
County of Forest } ss.

I, William B. Cochran, do hereby
certify that on the 8th day
of July, 1985, I found
evidence of the Northeast Section
corner of Section 5
Township 39 North, Range
14 East, Fourth Principal Meridian,
as described hereon; and that from this evidence
I established a new monument and accessories
as described hereon to perpetuate the original
location of this corner.

Resident witnesses:

Tony Tillman

State Plane Co-ordinates
N- 268,451.4760
E-2,316,320.7060



○ = Corner monument restored.

History of original corner establishment:

Original Government Survey in 1858 by Alfred Millard.

Dependent Resurvey in 1945 by Hugh Crawford.

Corner restored on May 10th, 1974, by Jean Resvick, a Registered
Land Surveyor with the U.S. Forest Service.

See Certified Land Corner Restoration Certificate #105818, filed in
the Registrar of Deeds Office, in the Forest County Courthouse.

Description of corner evidence found:

Found monument as described and in place, from which the following bear;

Tamarack	15"	S21°E	178.20 feet
W. Pine	16"	S78°W	26.52 feet

Description of monument and accessories I established to perpetuate the original location of this corner.

Blazed and scribed a new bearing tree;

Tamarack	14"	N 5°E	66.96 feet
Re-set Steel Sign Post		NW	2.00 feet

Dated at Hiles, Wis., this 27th day of February, 1986

Signature William B. Cochran Title Land Surveyor Registration No. S-1107
(County Surveyor, Registered Land Surveyor, or other duly authorized official)

Office of Register of Deeds, County of Forest, I hereby certify that the within
instrument was filed in this office for record on the 11th day of March, 1987
at 3:30 o'clock P. M.

Paul Achenbrenner
(Register of Deeds)

By Deputy

FORM NO. 985-A
H.C. Miller Company

Stock No. 26273

DOCUMENT NUMBER 132312

44814320000

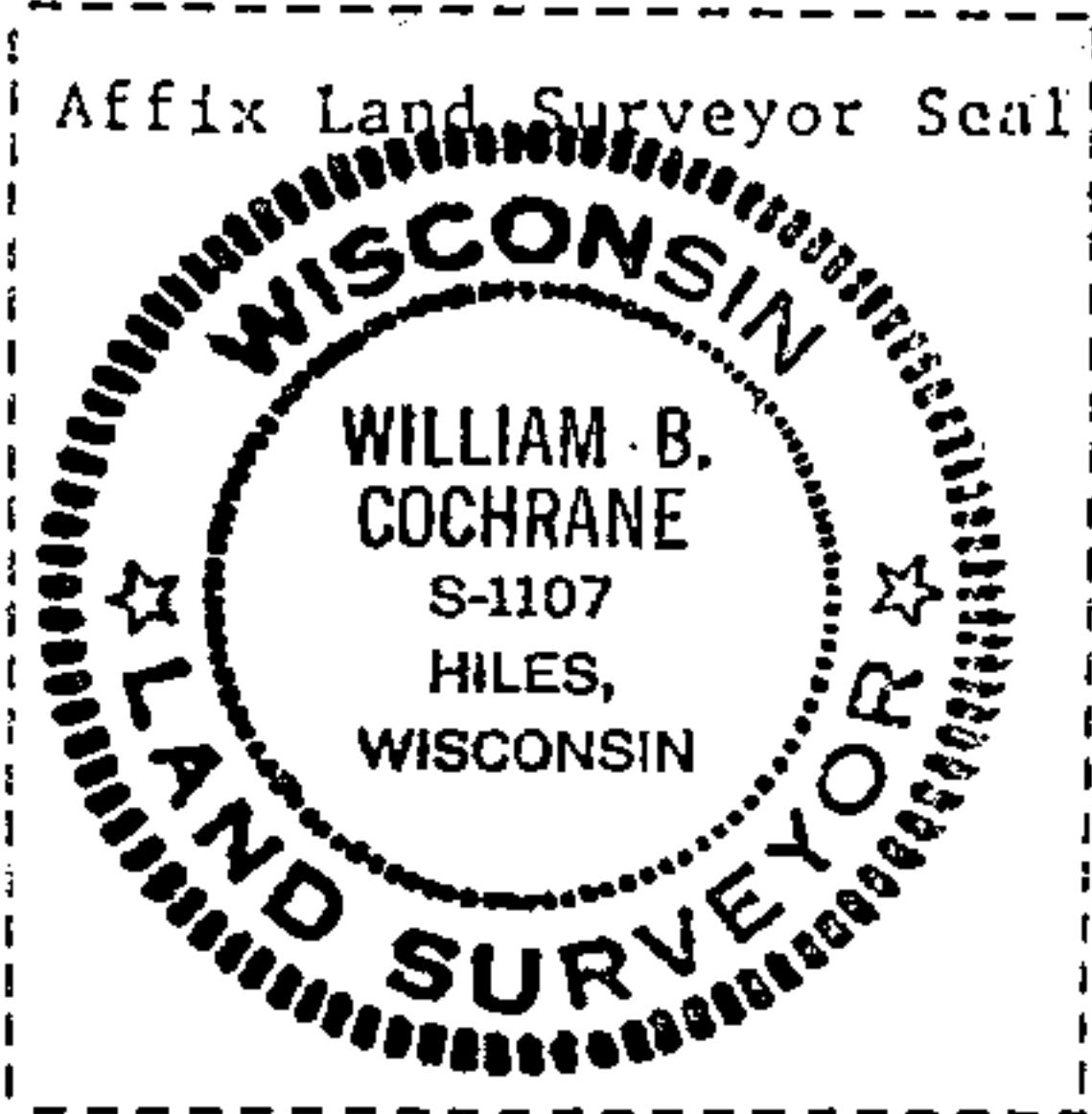
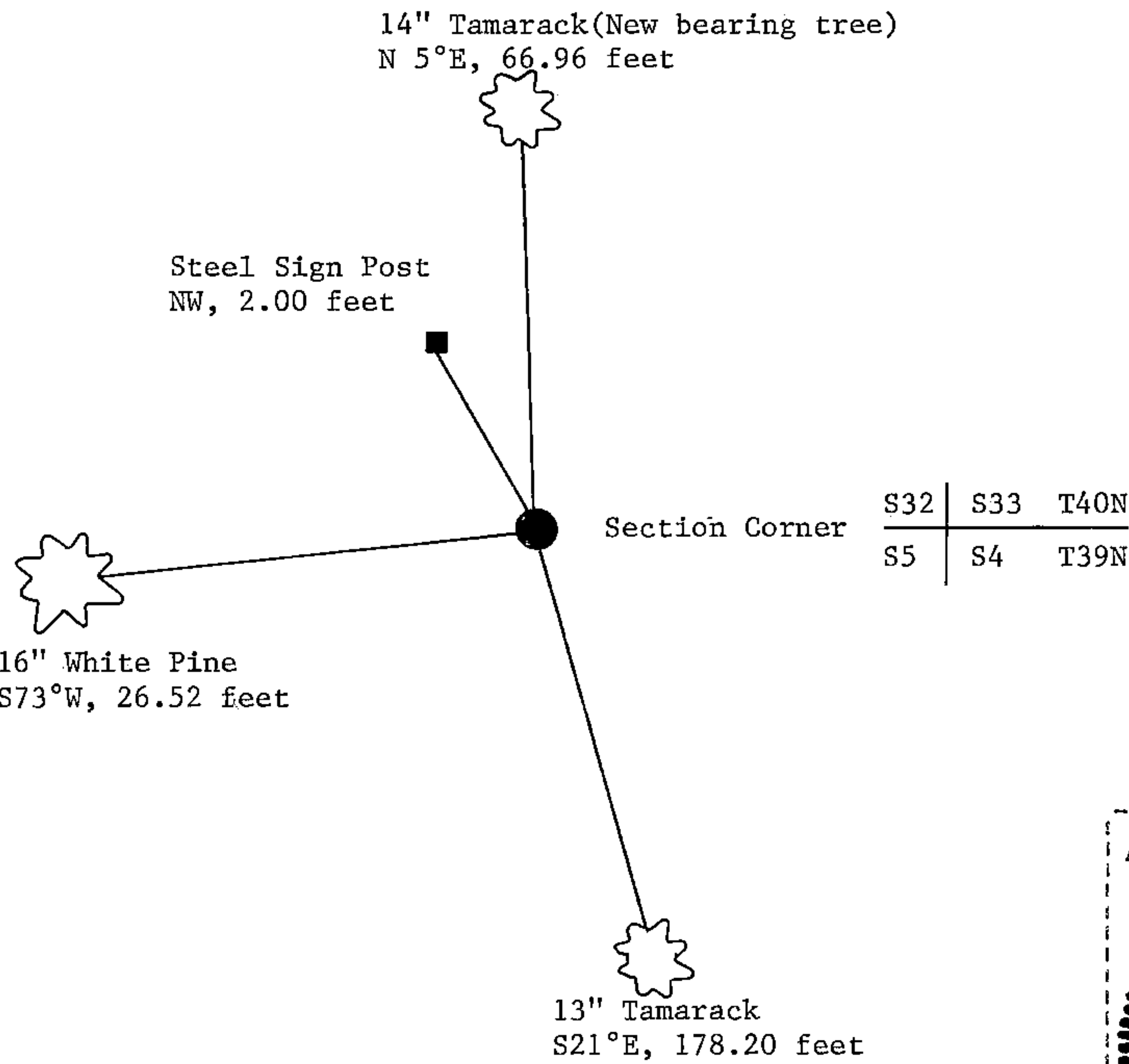
(e) Describe any material discrepancy between the location of the corner as restored or reestablished and the location of that corner as previously restored or reestablished by distance and direction. Show the discrepancy on the plan view drawing under (d), above. Show the distances between the corner as previously restored or reestablished and (1) the corner as restored or reestablished, and (2) to at least 2 of the witness monuments shown on the drawing in (d), above.

See drawing below.

(f) Was the corner restored through acceptance of (1) an obliterated evidence location, or, (2) a found perpetuated location?

Restored through acceptance of a found perpetuated location.

(g&h) Was the corner reestablished through lost corner proportionate methods? If so, show the method, including the directions and distances to other public land survey corners used as evidence or used for proportioning in determining the corner location?



(i) I, William B. Cochrane
(type or print name) certify that the corner location shown on this record was determined by me or under my direction and control and that this U.S. Public Land Survey Monument Record is correct and complete to the best of my knowledge and belief.

William B. Cochrane October 7, 1986
Signature Date

Survey requested by: Edward A. Jensen 3-9-87
District Ranger Date

CERTIFIED LAND CORNER RESTORATION

State of Wisconsin

County of Forest

ss.

I Jean F. Resvick, do hereby certify that on the 10 day of May, 1974, I found evidence of the Northeast Section corner of Section 5 Township 39 North, Range 14 East, Fourth Principal Meridian, as described hereon; and that from this evidence I established a new monument and accessories as described hereon to perpetuate the original location of this corner:

Description of original monument and accessories and subsequent restorations:

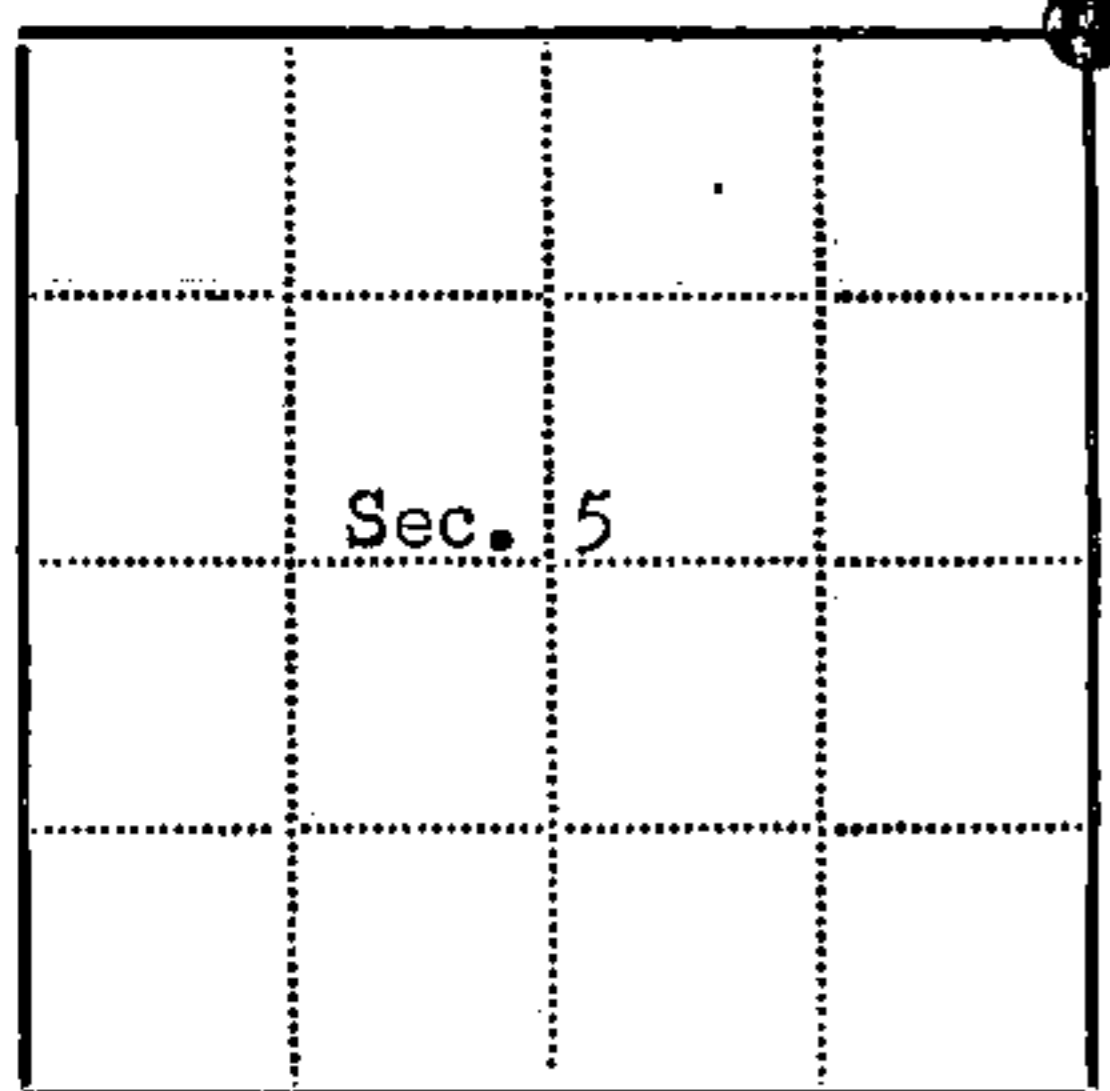
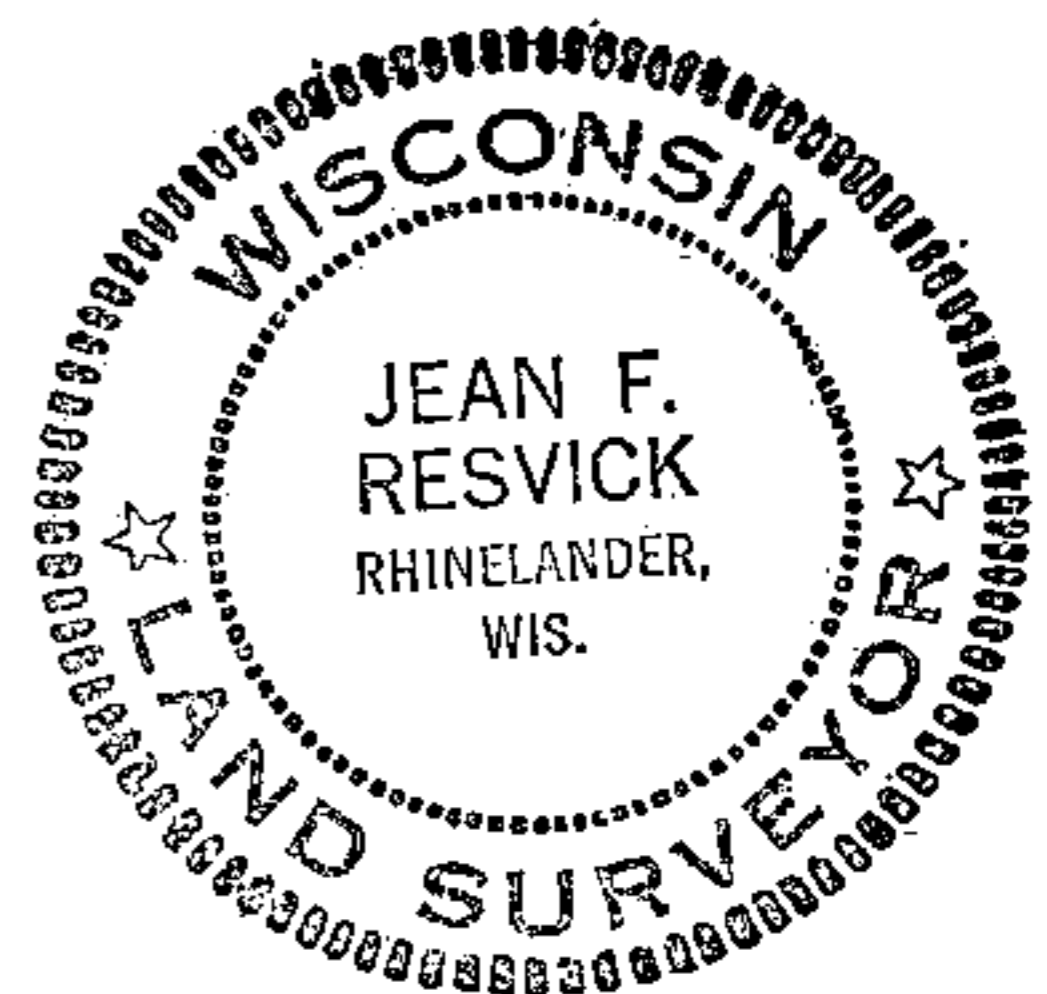
Surveyed in 1858 by Alfred Millard
 Dependent Resurvey in 1945 by H.B. Crawford
 From original evidence set a concrete monument, 3 feet long, 5 inch diameter with brass cap marked, T40N R14E, S32, S33, S5, S4, T39N, 1945
 Tamarack 10, N40° 30'E, 132.5 lks.
 Tamarack 8, S21° 15'E, 269.5 lks.
 Dead Cedar 18, S13W, 62 lks.
 Dead Cedar 10, N39° 30'W 32.5 lks.

Description of corner evidence found:

Monument found as described above
 Tamarack, dead, N41E, 132 lks.
 Tamarack 13, S21E, 270 lks.
 Dead Cedar S13W, 62 lks.
 Dead Cedar, fallen, N40W, 32 lks.

Description of monument and accessories I established to perpetuate the location of this corner:

Blazed and scribed White Pine 15, S78W, 26.52 feet
 Set iron post 0.5 feet north of monument



● = Corner monument restored

□ =

Resident witnesses

Dated at Rhinelanders Wisconsin, this 30 day of July 1974.

Signature Jean F. Resvick Title Land Surveyor
 (County Surveyor, Registered Land Surveyor, or other duly authorized official)

Surveyors Registration No. S-802 Document Number 105818

Office of Register of Deeds County of Forest

I hereby certify that the within instrument was filed in this office for record on the 8th day of August 1974, and was filed in Book No. Restorations Page No. A-9 of County Records.

Signature Eugene Stutzman Title

Township 39 North, Range 14 East, Section 5, Index No. A-9, Page No.

44014320000