

# U.S. PUBLIC LAND SURVEY MONUMENT RECORD

Index No. Z-3

State of Wisconsin }  
County of Forest } ss.

I, William B. Cochrane, do hereby certify that on the 17th day of July, 1985, I found evidence of the South Quarter corner of Section 31 Township 40 North, Range 14 East, Fourth Principal Meridian, as described hereon; and that from this evidence I established a new monument and accessories as described hereon to perpetuate the original location of this corner.

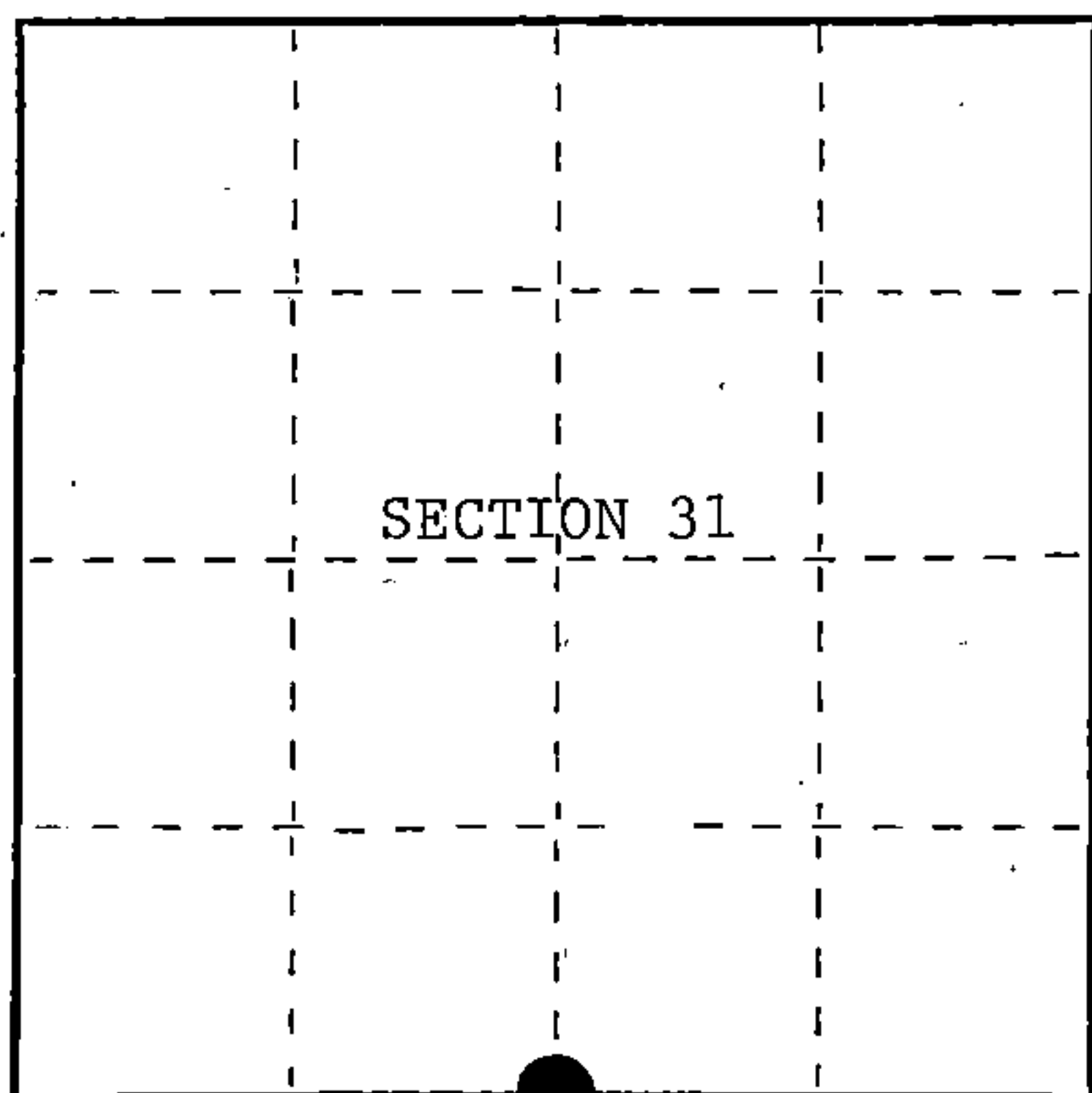
Resident witnesses:

Tony Tillman

State Plane Co-ordinates

N- 268,197.2540

E-2,308,495.0790



○ = Corner monument restored.

History of original corner establishment:

Original Government Survey in 1858 by Alfred Millard.

Corner restored on July 7th, 1976 by William B. Cochrane, a Registered Land Surveyor with the U.S. Forest Service.

See Certified Land Corner Restoration Certificate #110923, filed in the Registrar of Deeds Office in the Forest County Courthouse.

Description of corner evidence found:

Found monument as described and in place, from which the following bear;

Maple	25"	N 1°E	40.40 feet
Maple	22"	S 5°E	35.36 feet
Steel Sign Post		NW	0.50 feet

Description of monument and accessories I established to perpetuate the original location of this corner.

Re-set Steel Sign Post	North	2.00 feet
------------------------	-------	-----------

Dated at Hiles, Wis., this 11th day of February, 1987.

Signature William B. Cochrane Title Land Surveyor Registration No. S-1107  
(County Surveyor, Registered Land Surveyor, or other duly authorized official)

Office of Register of Deeds, County of Forest, I hereby certify that the within instrument was filed in this office for record on the 11th day of March, 1987 at 3:30 o'clock P. M.

Paul Aschenbrenner  
(Register of Deeds)

By \_\_\_\_\_ Deputy

44014310020

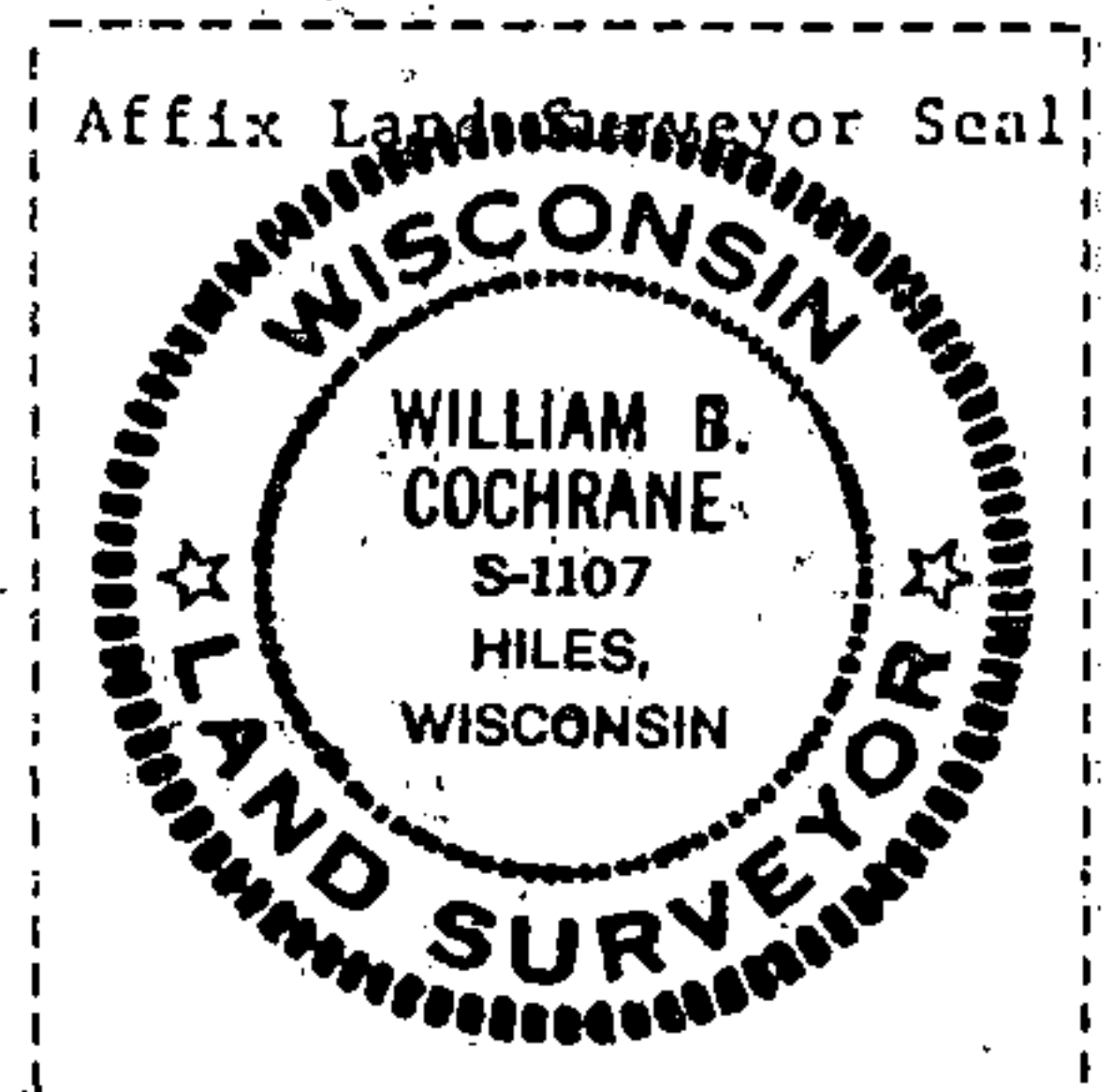
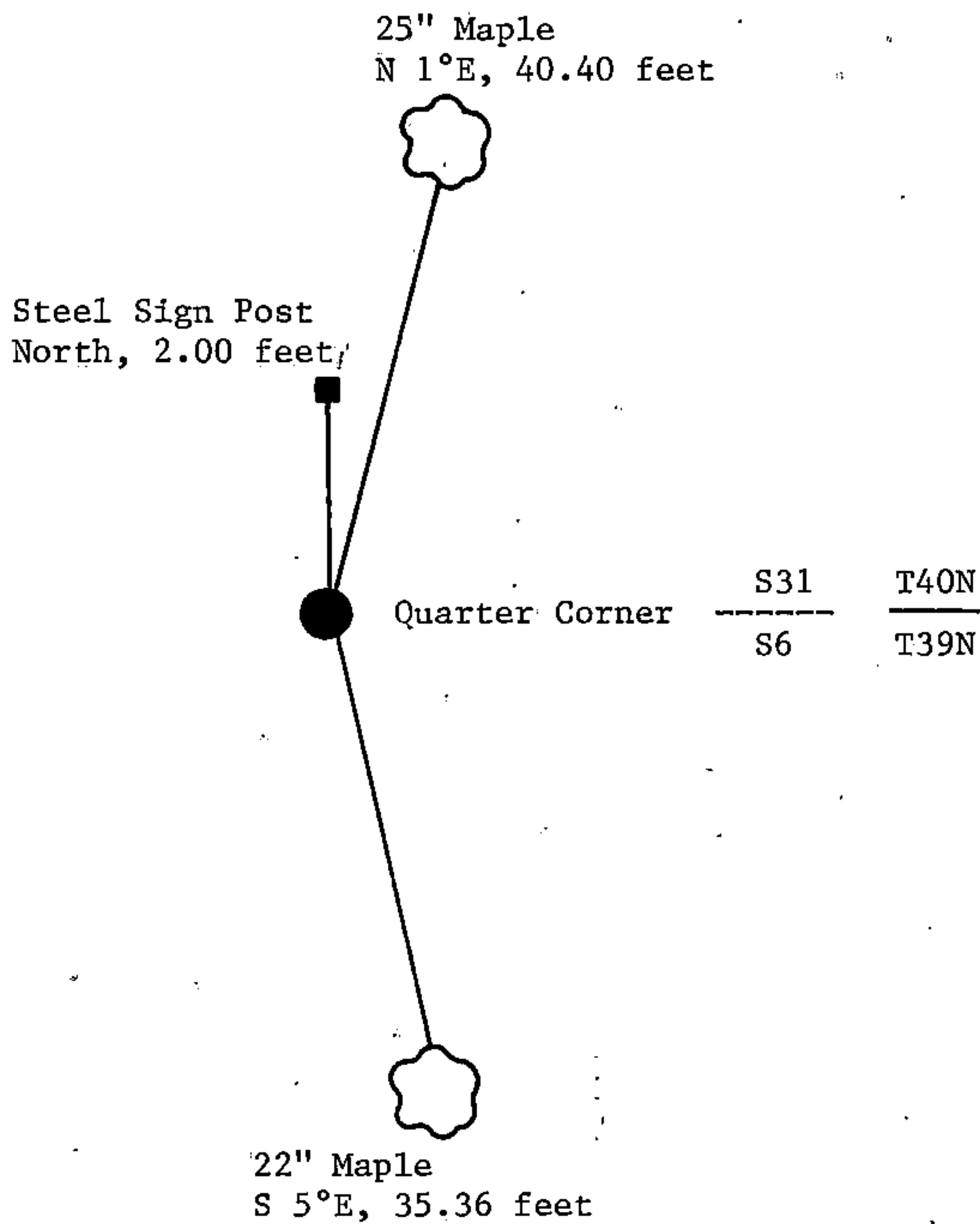
(e) Describe any material discrepancy between the location of the corner as restored or reestablished and the location of that corner as previously restored or reestablished by distance and direction. Show the discrepancy on the plan view drawing under (d), above. Show the distances between the corner as previously restored or reestablished and (1) the corner as restored or reestablished, and (2) to at least 2 of the witness monuments shown on the drawing in (d), above.

See drawing below.

(f) Was the corner restored through acceptance of (1) an obliterated evidence location, or, (2) a found perpetuated location?

Restored through acceptance of a found perpetuated location.

(g&h) Was the corner reestablished through lost corner proportionate methods? If so, show the method, including the directions and distances to other public land survey corners used as evidence or used for proportioning in determining the corner location?



(i) I, William B. Cochrane  
(type or print name) certify that the corner location shown on this record was determined by me or under my direction and control and that this U.S. Public Land Survey Monument Record is correct and complete to the best of my knowledge and belief.

William B. Cochrane  
Signature

February 11, 1987  
Date

Survey requested by;

Edward [Signature]

3-9-87

District Ranger

Date

CERTIFIED LAND CORNER RESTORATION

State of Wisconsin

County of Forest

ss.

I William B. Cochrane, do hereby certify that on the 7th day of July, 1976, I found evidence of the North Quarter corner of Section 6 Township 39 North, Range 14 East, Fourth Principal Meridian, as described hereon; and that from this evidence I established a new monument and accessories as described hereon to perpetuate the original location of this corner:

Description of original monument and accessories and subsequent restorations:

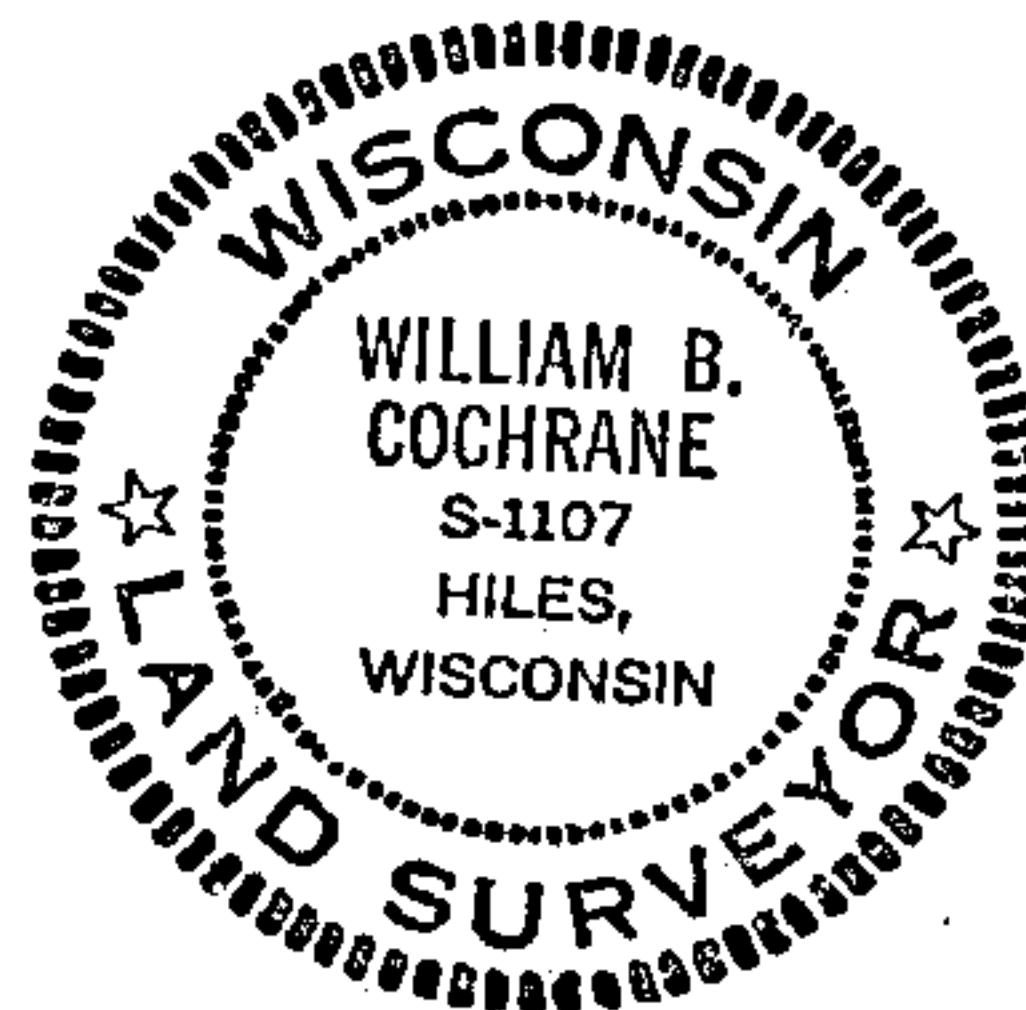
Surveyed by Alfred Millard in June 1858.  
West between sections 6 and 31. 40.0 chains set quarter section post.  
Sugar, 12", N.25°W., 15 links  
Lynn, 14", S.31°E., 27 links  
26.0 chains west enter marsh bears north and south  
33.0 chains west leave marsh bears north and south  
43.10 chains west intersect range line

Description of corner evidence found:

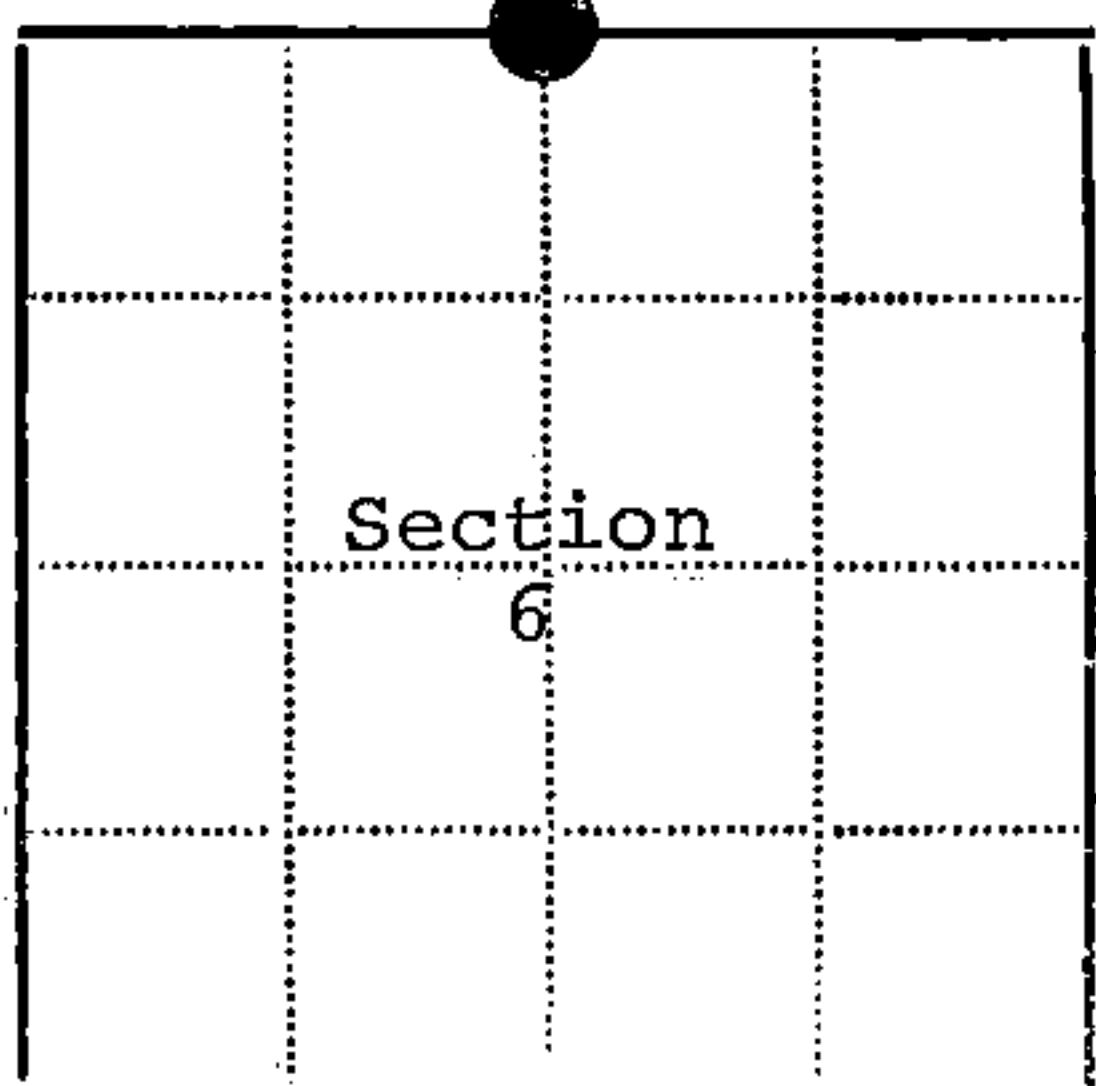
1 1/2 inch diameter iron pipe, 3 feet above ground.  
Sugar stump, N.15°W., 15 links from pipe.  
2 links east of pipe the bearing to the sugar stump is N.25°W.  
No evidence of a post found at this position.  
No evidence of a basswood stump  
26.0 chains west enter marsh bears north and south  
33.0 chains west leave marsh bears north and south  
43.0 chains west to township corner

Description of monument and accessories I established to perpetuate the location of this corner:

On July 7, 1976, I replaced the pipe with a 2 inch inside diameter, galvanized pipe, 3 feet long, filled with concrete, with a brass cap stamped:  
T40N, R14E, 1/4, S31, S36, T39N, 1976, S-1107  
From which the following bear:  
Maple, 23", N.1°E., 40.40 feet  
Maple, 19", S.5°E., 35.36 feet  
Set a steel sign post NW of the monument, 0.50 feet.



44014.310020



● - Corner monument restored

□ -

Resident witnesses.....

Dated at Laona Wisconsin, this 6 day of October, 1976.

Signature William B. Cochrane Title Surveying Technician  
(County Surveyor, Registered Land Surveyor, or other duly authorized official)

Surveyors Registration No. S-1107 DOCUMENT NUMBER 110923

Office of Register of Deeds County of Forest

I hereby certify that the within instrument was filed in this office for record on the 31st day of January, 1977, and was filed in Book No. Page No. of County Records.

Signature Eugene Stutzman Title Register of Deeds

Township 39 North, Range 14 East, Section 6, Index No. A-3, Page No.

A  
3