

U.S. PUBLIC LAND SURVEY MONUMENT RECORD

Index No. Z-5

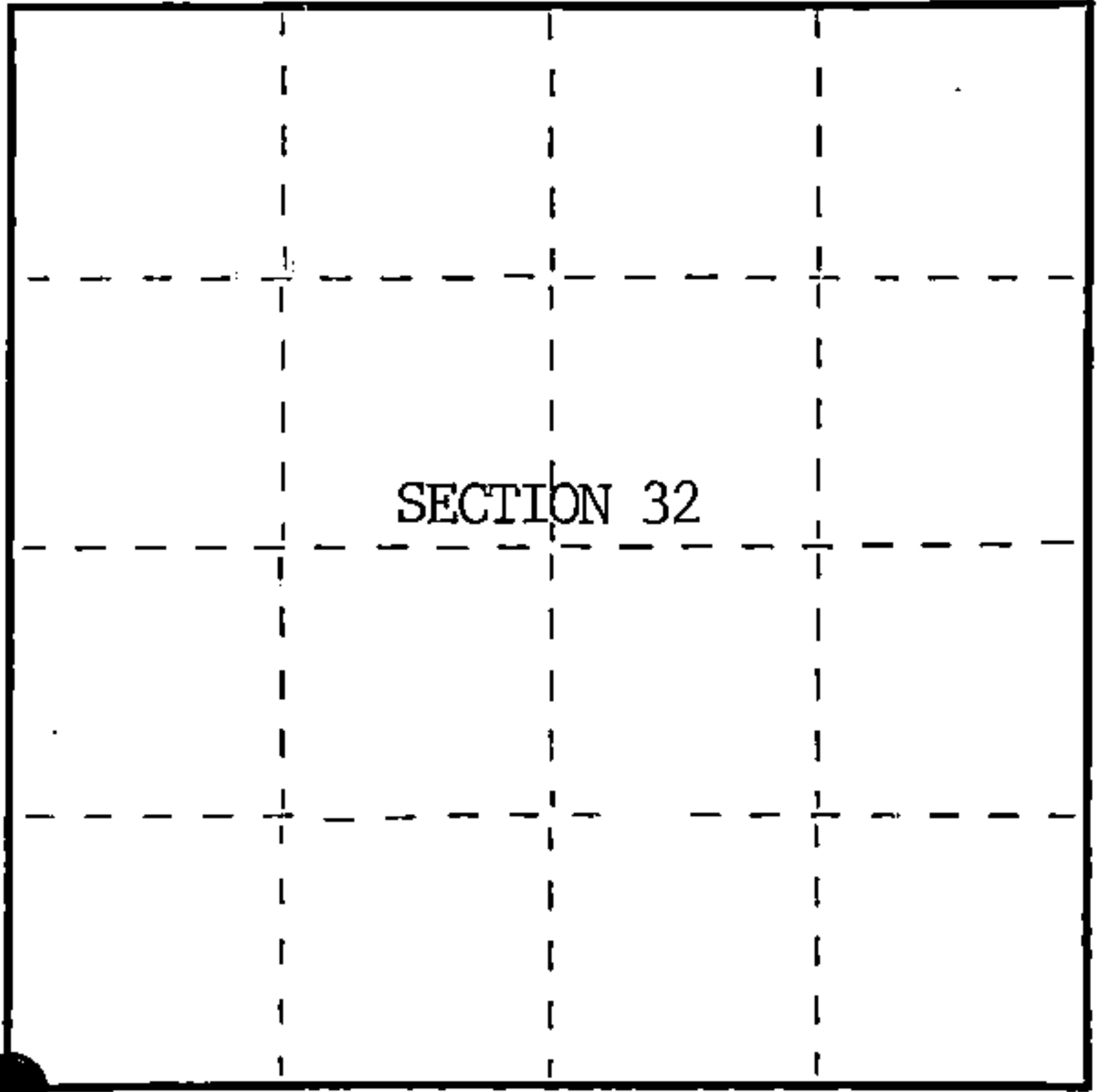
State of Wisconsin }
County of Forest } ss.

I, William B. Cochrane, do hereby
certify that on the 8th day
of July, 1985, I found
evidence of the Southwest Section
corner of Section 32
Township 40, North, Range
14 East, Fourth Principal Meridian,
as described hereon; and that from this evidence
I established a new monument and accessories
as described hereon to perpetuate the original
location of this corner.

Resident witnesses:

Tony Tillman

State Plane Co-ordinates
N- 268,364.7850
E-2,311,084.3810



○ = Corner monument restored.

History of original corner establishment:
Original Government Survey in 1858 by Alfred Millard.

Dependent Resurvey in 1945 by Hugh Crawford.

Corner restored on May 7th, 1974, by Jean Resvick, a Registered
Land Surveyor with the U.S. Forest Service.
See Certified Land Corner Restoration Certificate #105817, filed
in the Registrar of Deeds Office, in the Forest County Courthouse.

Description of corner evidence found:

Found monument as described and in place, from which the following bear;

Elm(Dead)	20"	N35°E	48 lks.
Maple(Cutdown)	10"	S22°E	48 lks.
Elm(Dead)	12"	S32°W	22 lks.
Maple	14"	N76°W	31 lks.

Description of monument and accessories I established to perpetuate the original location of this corner.

Blazed and scribed the following new bearing trees;

Maple	4"	N68°E	17.79 feet
Maple	10"	S19°E	84.30 feet
Maple	7"	S82°W	52.50 feet

Re-set Steel Sign Post NW 2.00 feet

Dated at Hiles, Wis., this 27th day of February, 1986

Signature William B. Cochrane Title Land Surveyor Registration No. S-1107
(County Surveyor, Registered Land Surveyor, or other duly authorized official)

Office of Register of Deeds, County of Forest, I hereby certify that the within
instrument was filed in this office for record on the 11th day of March, 1987
at 3:30 o'clock P. M.

Paul Aschenbrenner
(Register of Deeds)

By Deputy

FORM NO. 985-A
H.C. Miller Company
MILWAUKEE, WISCONSIN

Stock No. 26273

DOCUMENT NUMBER 132457

74014310000

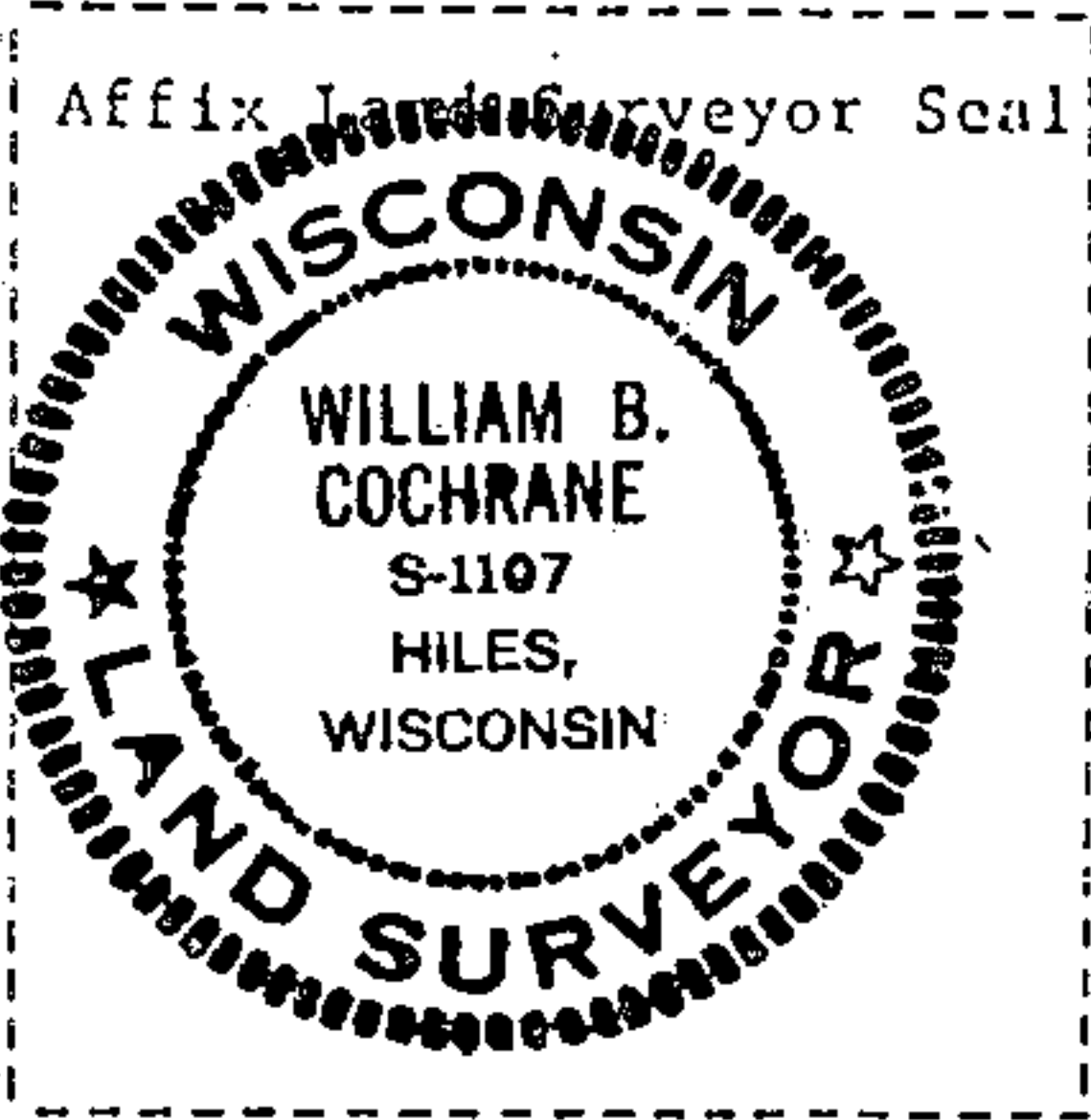
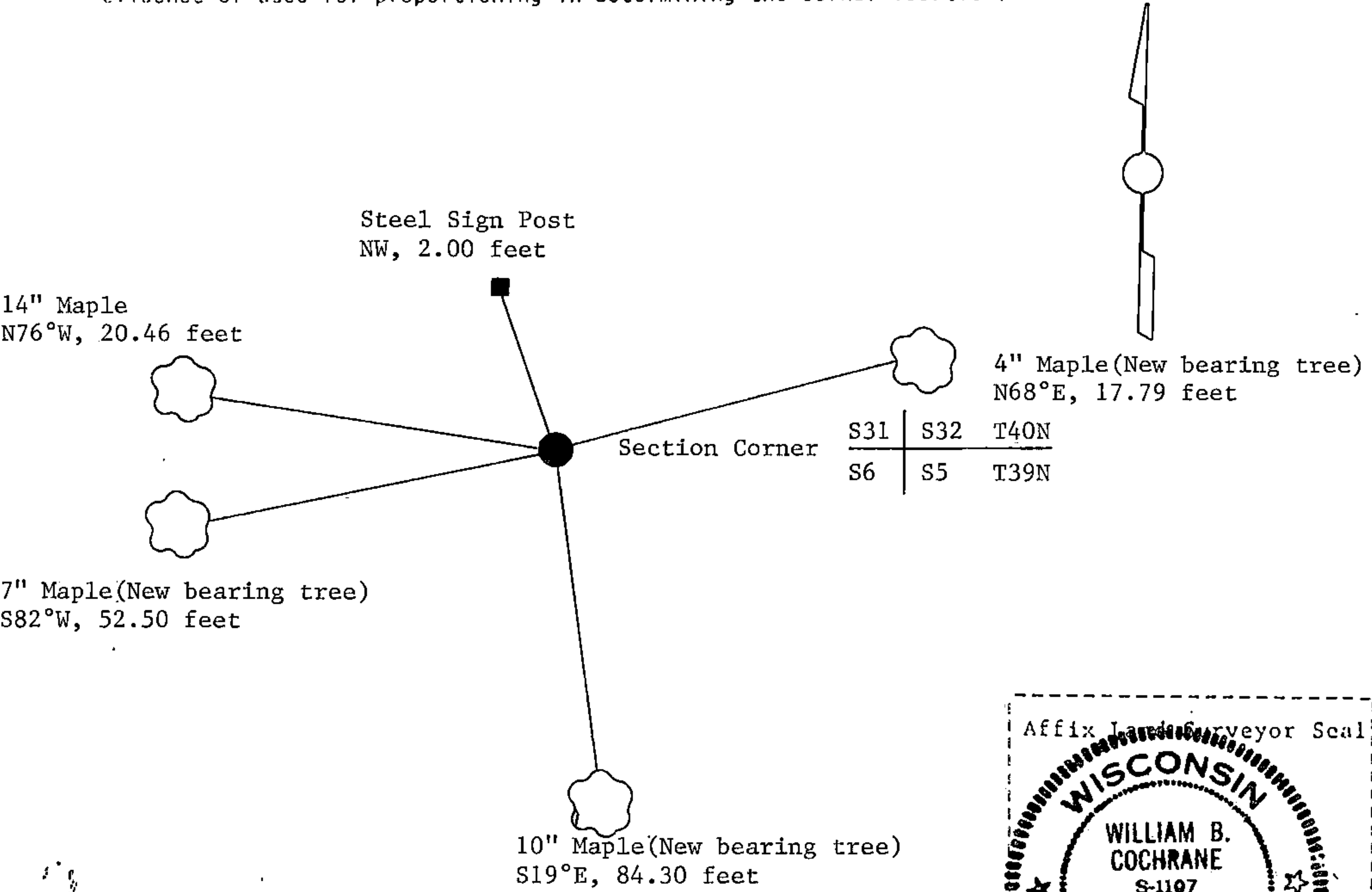
(e) Describe any material discrepancy between the location of the corner as restored or reestablished and the location of that corner as previously restored or reestablished by distance and direction. Show the discrepancy on the plan view drawing under (d), above. Show the distances between the corner as previously restored or reestablished and (1) the corner as restored or reestablished, and (2) to at least 2 of the witness monuments shown on the drawing in (d), above.

See drawing below.

(f) Was the corner restored through acceptance of (1) an obliterated evidence location, or, (2) a found perpetuated location?

Restored through acceptance of a found perpetuated location.

(g&h) Was the corner reestablished through lost corner proportionate methods? If so, show the method, including the directions and distances to other public land survey corners used as evidence or used for proportioning in determining the corner location?



(i) I, William B. Cochrane
(type or print name) certify that the corner location shown on this record was determined by me or under my direction and control and that this U.S. Public Land Survey Monument Record is correct and complete to the best of my knowledge and belief.

William B. Cochrane October 7, 1986
Signature Date

Survey requested by: [Signature] 3-9-87
District Ranger Date

U.S. PUBLIC LAND SURVEY MONUMENT RECORD

Index No. A-5

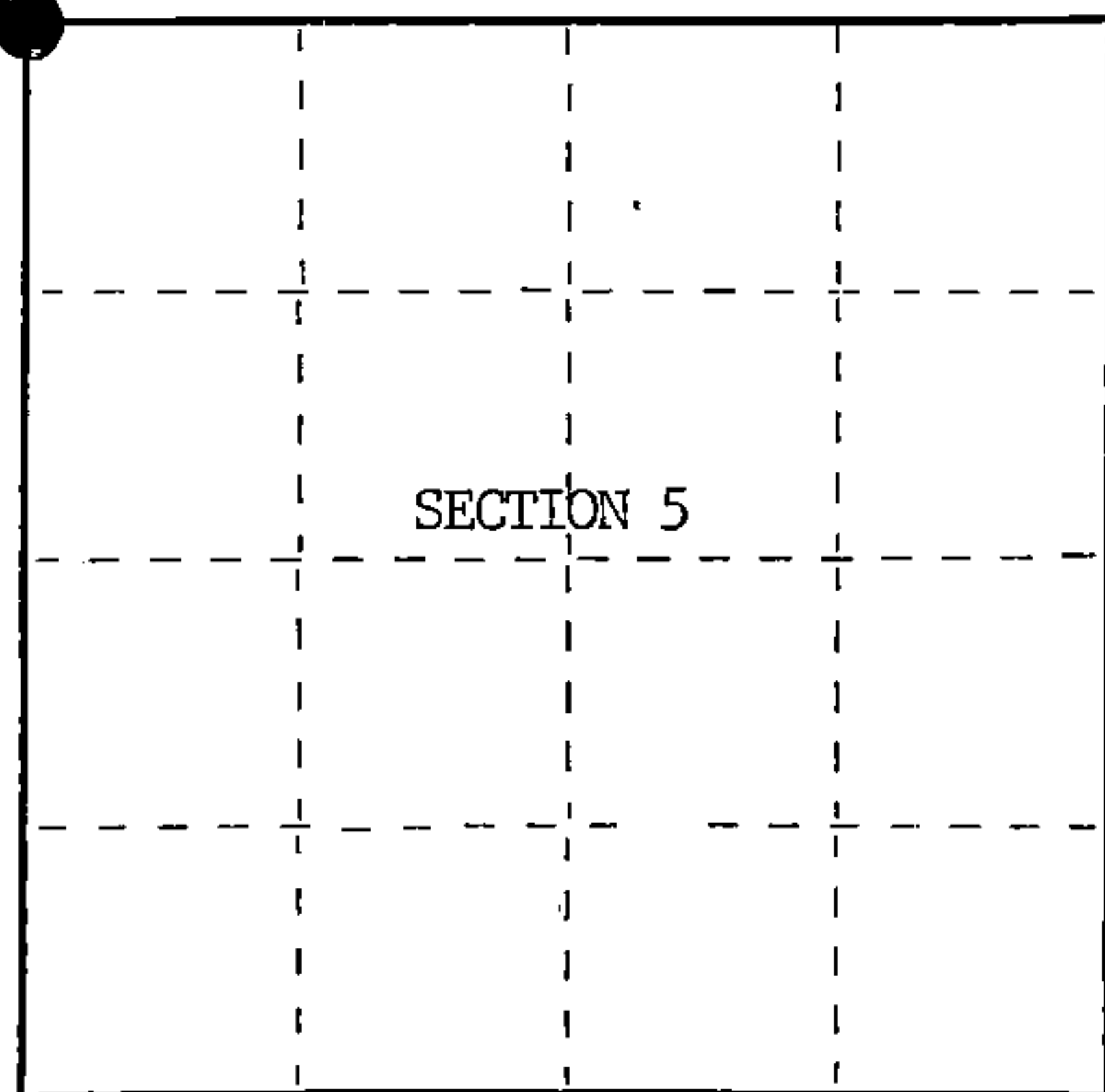
State of Wisconsin }
County of Forest } ss.

I, William B. Cochrane, do hereby certify that on the 8th day of July, 1985, I found evidence of the Northwest Section corner of Section 5 Township 39 North, Range 14 East, Fourth Principal Meridian, as described hereon; and that from this evidence I established a new monument and accessories as described hereon to perpetuate the original location of this corner.

Resident witnesses:

Tony Tillman

State Plane Co-ordinates
N- 268,364.7850
E-2,311,084.3810



○ = Corner monument restored.

History of original corner establishment:

Original Government Survey in 1858 by Alfred Millard.

Dependent Resurvey in 1945 by Hugh Crawford.

Corner restored on May 7th, 1974, by Jean Resvick, a Registered Land Surveyor with the U.S. Forest Service.

See Certified Land Corner Restoration Certificate #105817, filed in the Registrar of Deeds Office, in the Forest County Courthouse.

Description of corner evidence found:

Found monument as described and in place, from which the following bear;

Elm(Dead)	20"	N35°E	48 lks.
Maple(Cutdown)	10"	S22°E	48 lks.
Elm(Dead)	12"	S32°W	22 lks.
Maple	14"	N76°W	31 lks.

Description of monument and accessories I established to perpetuate the original location of this corner.

Blazed and scribed the following new bearing trees;

Maple	4"	N68°E	17.79 feet
Maple	10"	S19°E	84.30 feet
Maple	7"	S82°W	52.50 feet

Re-set Steel Sign Post NW 2.00 feet

Dated at Hiles, Wis., this 27th day of February, 1986

Signature William B. Cochrane Title Land Surveyor Registration No. S-1107
(County Surveyor, Registered Land Surveyor, or other duly authorized official)

Office of Register of Deeds, County of Forest, I hereby certify that the within instrument was filed in this office for record on the 11th day of March, 1987 at 3:30 o'clock P.M.

Paul H. Schenck
(Register of Deeds)

By Deputy

44014310000

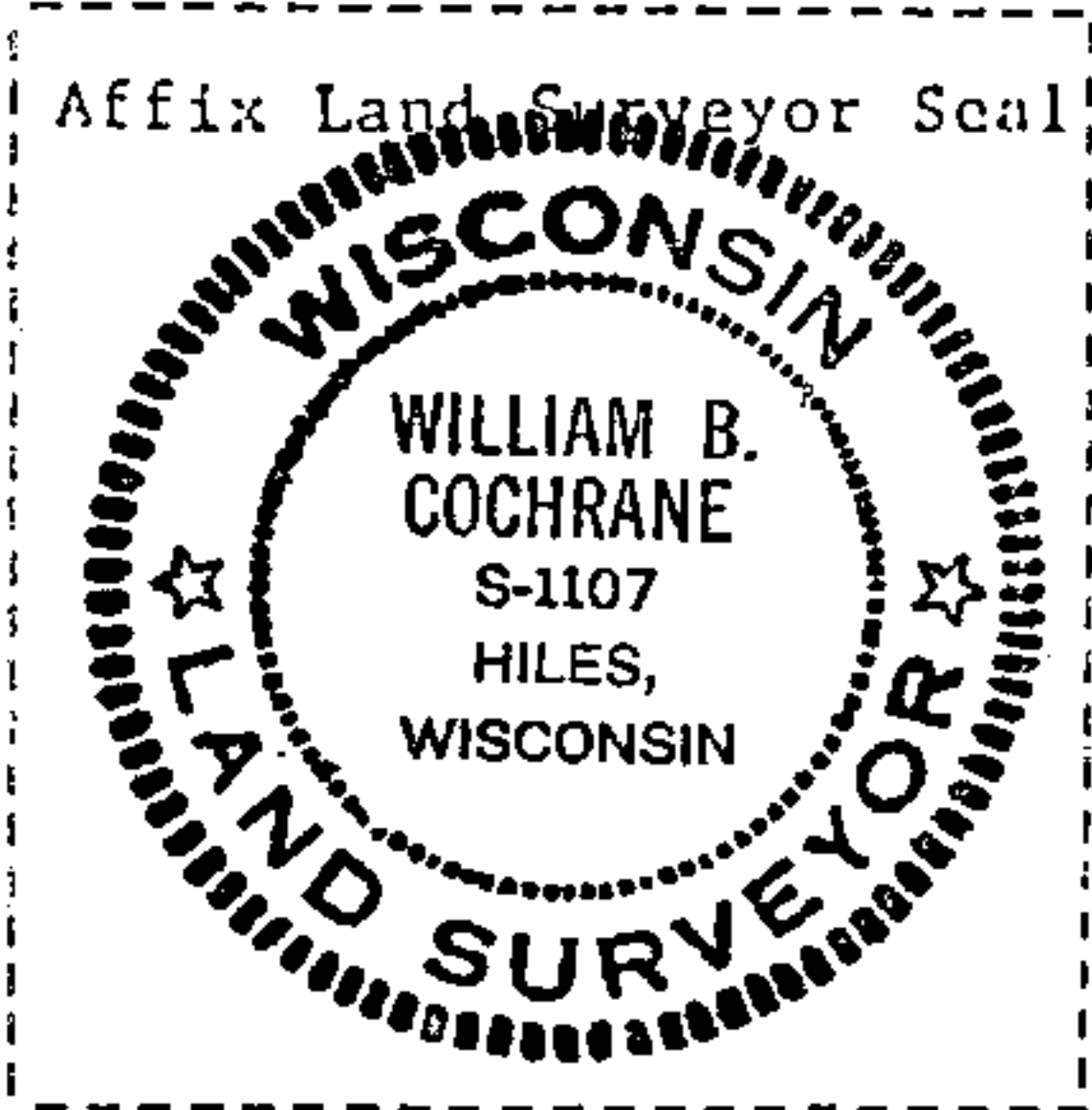
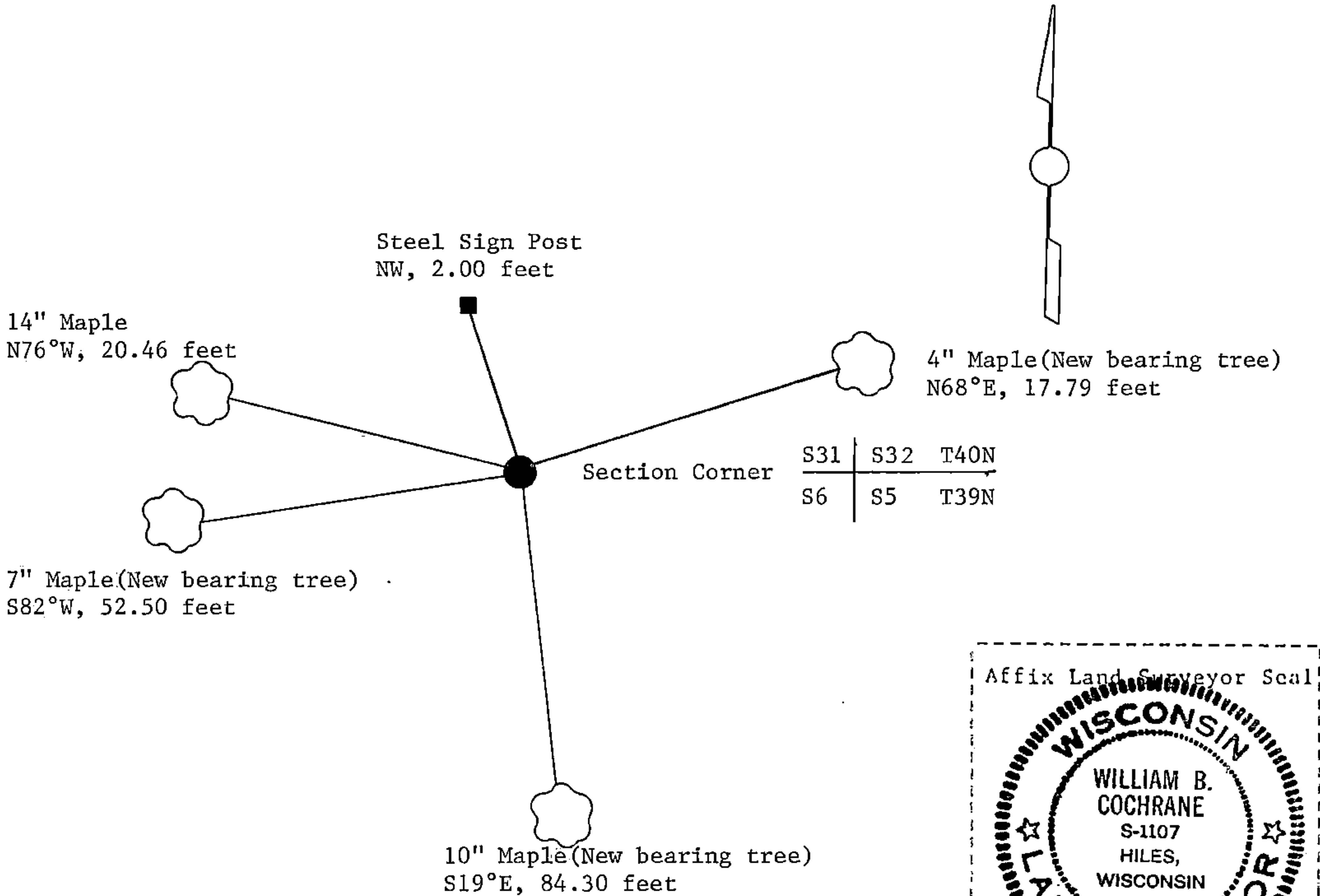
(e) Describe any material discrepancy between the location of the corner as restored or reestablished and the location of that corner as previously restored or reestablished by distance and direction. Show the discrepancy on the plan view drawing under (d), above. Show the distances between the corner as previously restored or reestablished and (1) the corner as restored or reestablished, and (2) to at least 2 of the witness monuments shown on the drawing in (d), above.

See drawing below.

(f) Was the corner restored through acceptance of (1) an obliterated evidence location, or, (2) a found perpetuated location?

Restored through acceptance of a found perpetuated location.

(g&h) Was the corner reestablished through lost corner proportionate methods? If so, show the method, including the directions and distances to other public land survey corners used as evidence or used for proportioning in determining the corner location?



(i) I, William B. Cochrane
(type or print name) certify that the corner location shown on this record was determined by me or under my direction and control and that this U.S. Public Land Survey Monument Record is correct and complete to the best of my knowledge and belief.

William B. Cochrane October 7, 1986
Signature Date

Survey requested by: Edward Seeger 3-9-87
District Ranger Date

CERTIFIED LAND CORNER RESTORATION

State of Wisconsin

County of Forest

ss.

I Jean F. Resvick, do hereby certify that on the 7th day of May, 19 74,
I found evidence of the Northeast Section corner of Section 6
Township 39 North, Range 14 East, Fourth Principal Meridian, as described
hereon; and that from this evidence I established a new monument and accessories as described hereon to per-
petuate the original location of this corner:

Description of original monument and accessories and subsequent restorations:

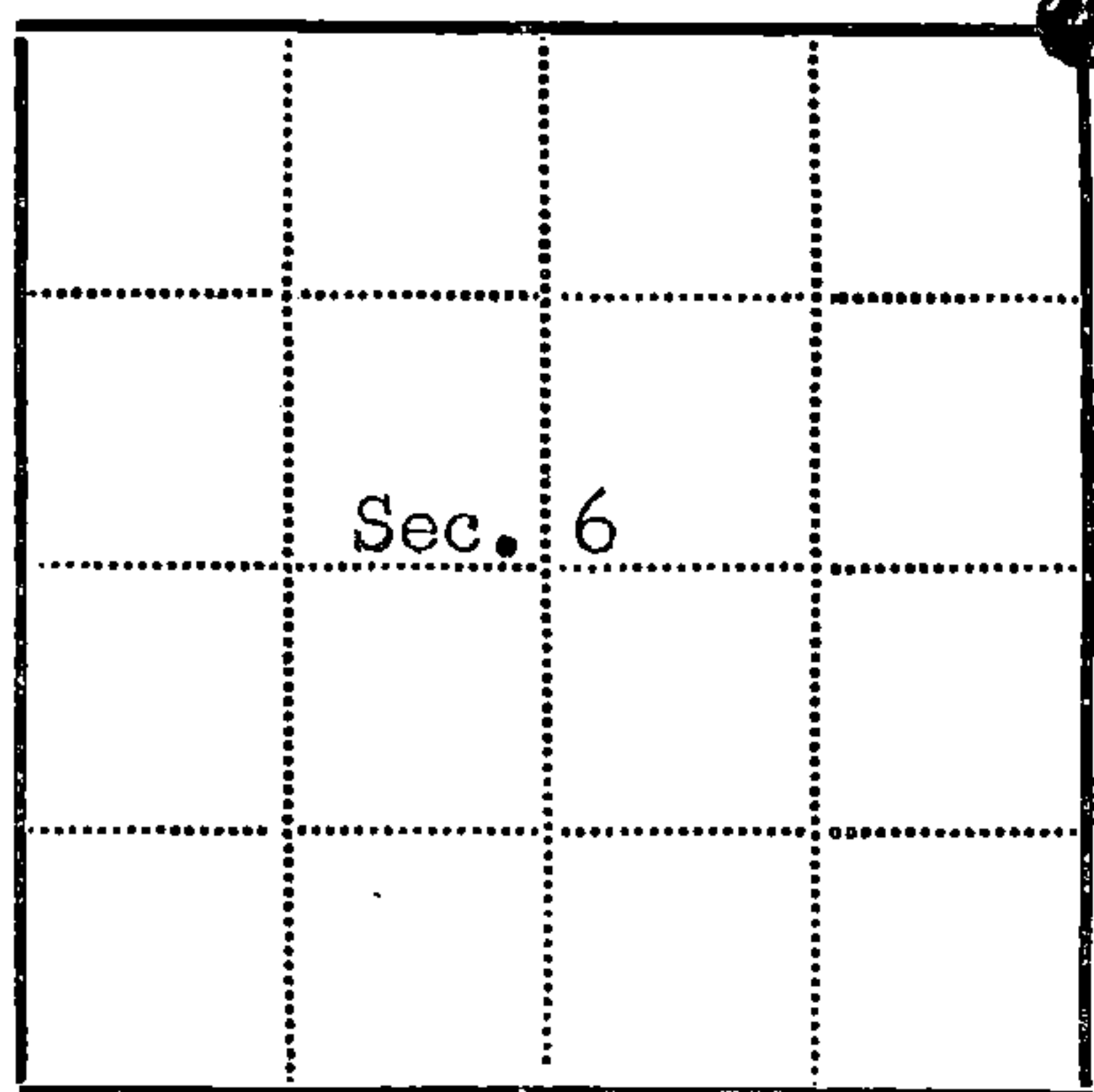
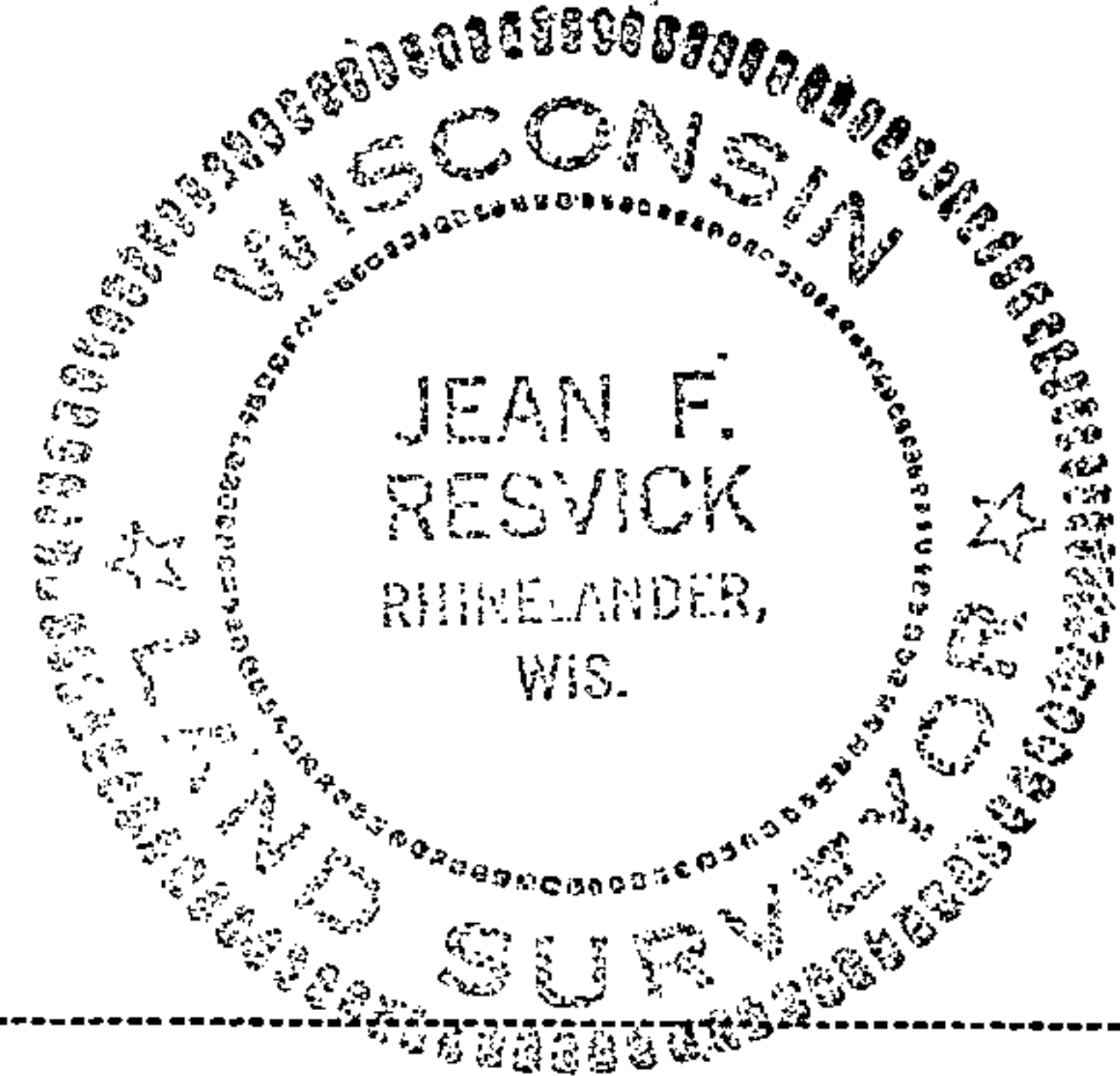
Survey in 1858 by Alfred Millard
Dependent Resurvey in 1945 by H.B. Crawford
From original evidence set iron post, 3 feet long, 2 inch diameter with brass cap marked
T40N, R14E, S31, S32, S6, S35, T39N, 1945.
Elm 8, N35° 30'E, 48 lks.
Maple 5, S22° 15'E, 48 lks.
Elm 4, S32W, 22 lks.
Maple 6, N78° 30'W, 31 1/2 lks.

Description of corner evidence found:

Iron pipe, rusted off top, not dependent resurvey monument.
Elm 16, N35° 30'E, 48 lks.
Maple 8, S22E, 48 lks.
Elm 13, S32, 22 lks.
Maple 13, N76W, 31 lks.
Original birch stump, S44W, 56 lks., scribing found.

Description of monument and accessories I established to perpetuate the location of this corner:

Replaced iron pipe with 2 inch inside diameter galvanized iron pipe 5 feet long, filled
with concrete, with brass cap stamped T40N, R14E, S31, S32, S6, S5, T39N, 1974, S-802
Bearing trees as found.
Set steel sign post 0.5 feet north of monument.



● - Corner monument restored
□ -

Resident witnesses.....

Dated at Rhineland Wisconsin, this 30 day of July
19 74.

Signature Jean F. Resvick Title Land Surveyor
(County Surveyor, Registered Land Surveyor, or other duly authorized official)

Surveyors Registration No. S-802 Document Number 105817

Office of Register of Deeds County of Forest

I hereby certify that the within instrument was filed in this office for record
on the 8th day of August, 19 74, and was filed in Book
No. Restorations Page No. A-5 of County Records.

Signature Eugene Stetson Title

Township 39 North, Range 14 East, Section 6, Index No. A-5, Page No.

44014310000

A
5