

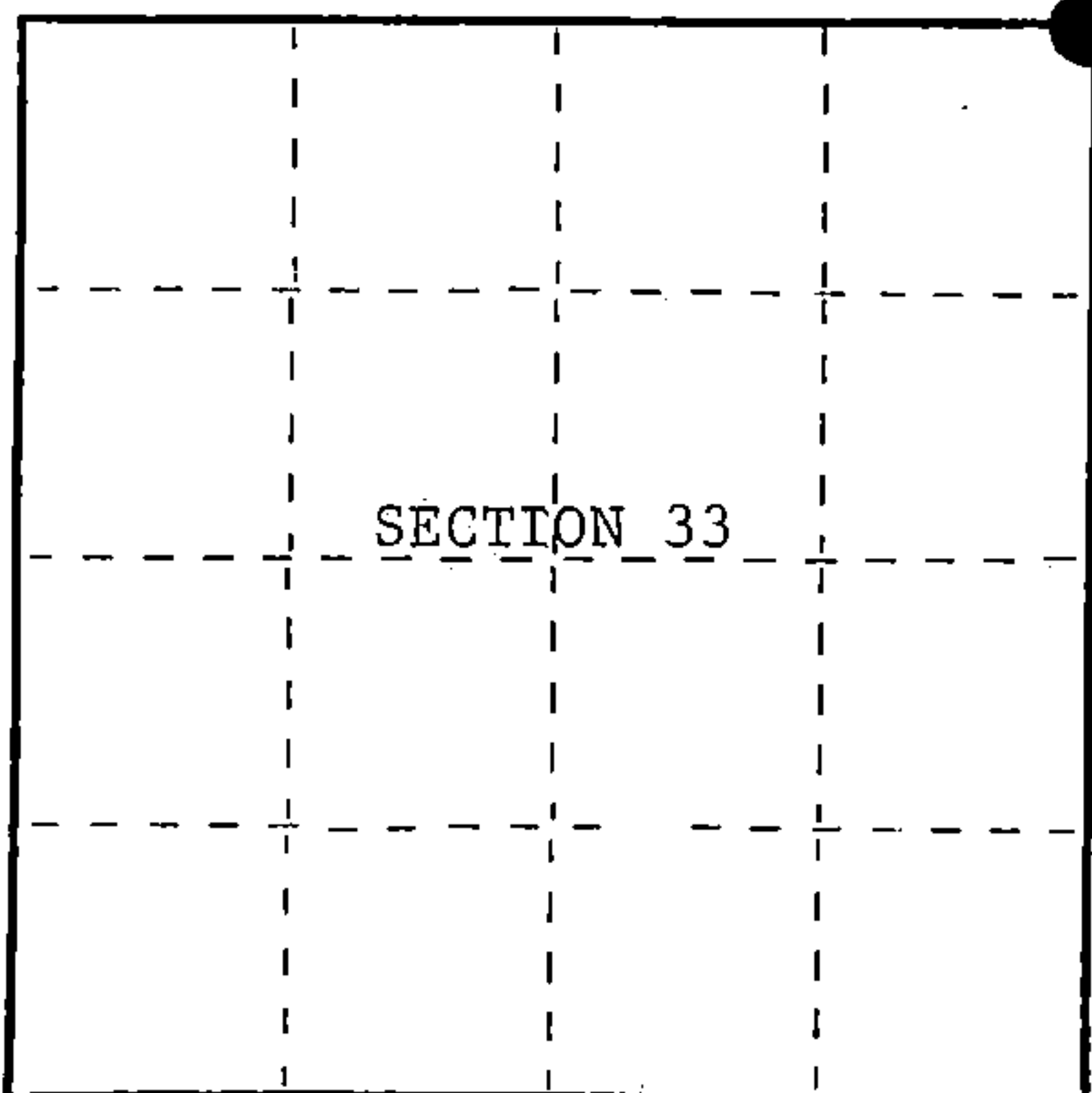
U.S. PUBLIC LAND SURVEY MONUMENT RECORD

Index No. V-13

State of Wisconsin }
County of Forest } ss.

I, William B. Cochrane, do hereby certify that on the 30th day of June, 1987, I found evidence of the Northeast Section corner of Section 33 Township 40 North, Range 14 East, Fourth Principal Meridian, as described hereon; and that from this evidence I established a new monument and accessories as described hereon to perpetuate the original location of this corner.

Resident witnesses:



○ = Corner monument restored.

History of original corner establishment:

Original Government Survey in 1865 by William E. Daugherty. Dependent Resurvey in 1925 by Arthur Brown. In place of a scribed Cedar Post, set an iron post, 3 feet long, 2 inches in diameter, 28 inches in the ground, with a brass cap mkd; T40N, R14E, S27, S28, S33, S34, 1925. Blazed and scribed the following bearing trees;

Ash	5"	N56°15'E	32 lks.
Y. Birch	5"	S54°15'E	35 lks.
Poplar	6"	S38°00'W	28 lks.
Poplar	9"	N80°00'W	50 lks.

Description of corner evidence found:

Found monument as described and in place. No bearing tree evidence was recovered. Found Steel Sign Post, Southeast, 1.30 feet from the monument.

Description of monument and accessories I established to perpetuate the original location of this corner.

Blazed and scribed the following new bearing trees;

W. Birch	8"	N63°E	14.43 feet
Aspen	6"	S20°E	13.35 feet
Y. Birch	13"	S28°W	15.38 feet
W. Birch	8"	N10°W	20.83 feet

Dated at Hiles, Wis., this 4th day of January, 1988

Signature William B. Cochrane Title Land Surveyor Registration No. S-1107
(County Surveyor, Registered Land Surveyor, or other duly authorized official)

Office of Register of Deeds, County of Forest, I hereby certify that the within instrument was filed in this office for record on the 18th day of March, 1988 at 12:50 o'clock P. M.

Paul Aschenbrenner
(Register of Deeds)

By Deputy

74014 28.0000

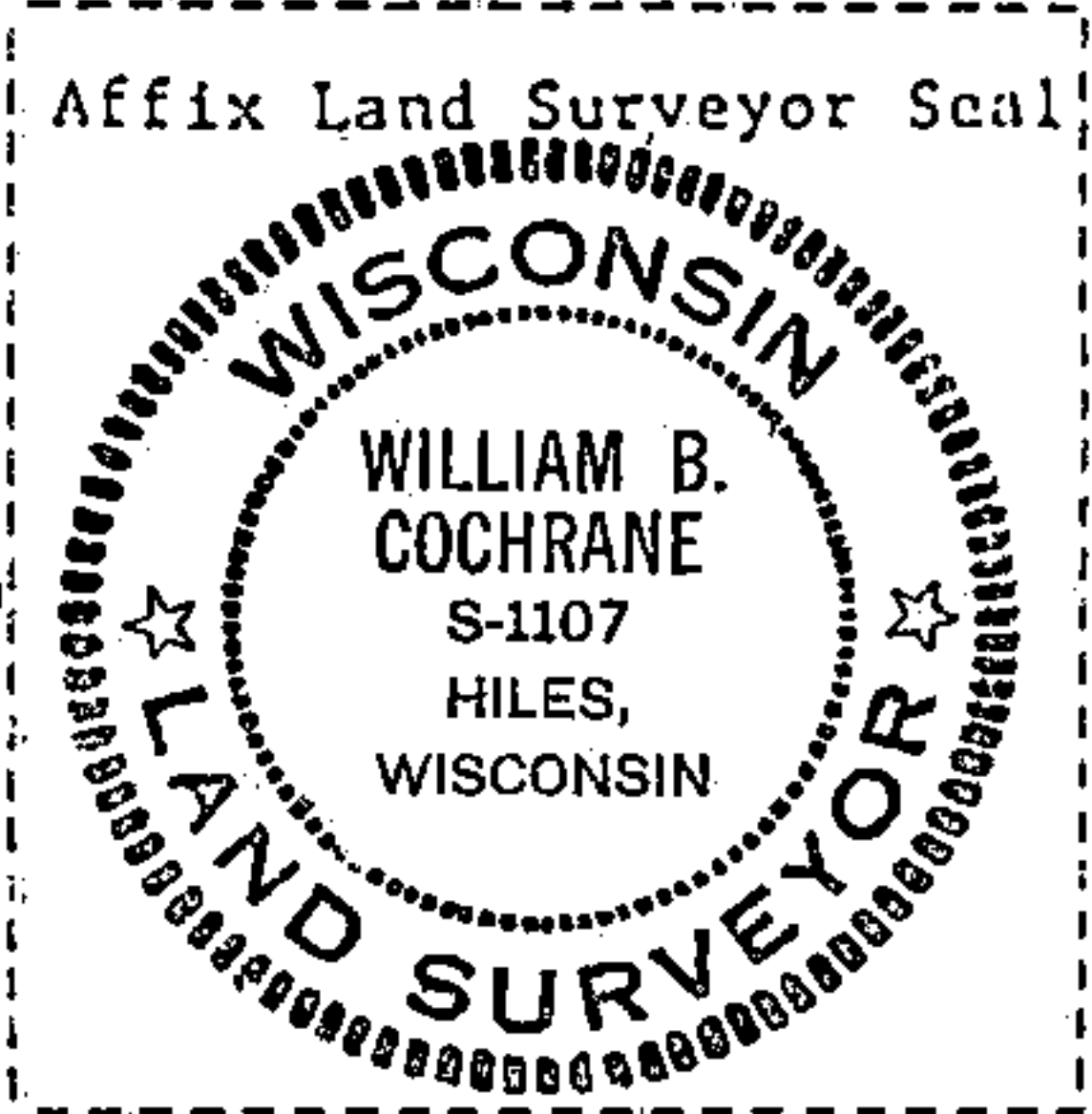
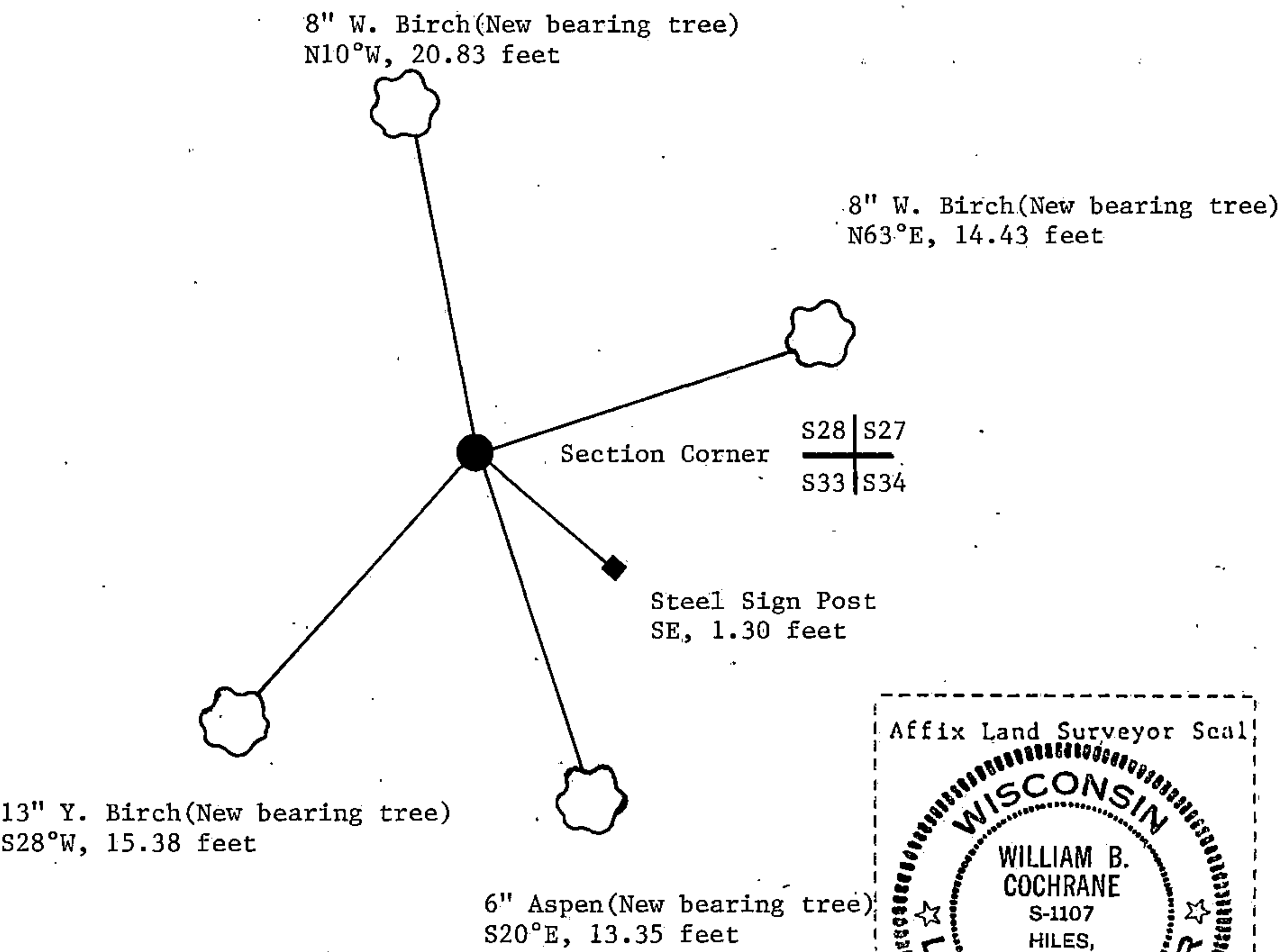
(e) Describe any material discrepancy between the location of the corner as restored or reestablished and the location of that corner as previously restored or reestablished by distance and direction. Show the discrepancy on the plan view drawing under (d), above. Show the distances between the corner as previously restored or reestablished and (1) the corner as restored or reestablished, and (2) to at least 2 of the witness monuments shown on the drawing in (d), above.

See drawing below.

(f) Was the corner restored through acceptance of (1) an obliterated evidence location, or, (2) a found perpetuated location?

Restored through acceptance of a found perpetuated location.

(g&h) Was the corner reestablished through lost corner proportionate methods? If so, show the method, including the directions and distances to other public land survey corners used as evidence or used for proportioning in determining the corner location?



(i) William B. Cochrane
(type or print name) certify that the corner location shown on this record was determined by me or under my direction and control and that this U.S. Public Land Survey Monument Record is correct and complete to the best of my knowledge and belief.

William B. Cochrane January 4, 1988
Signature Date

Survey requested by; _____
District Ranger Date