

Stock No. 26273

DOCUMENT NUMBER

140486

U.S. PUBLIC LAND SURVEY MONUMENT RECORD

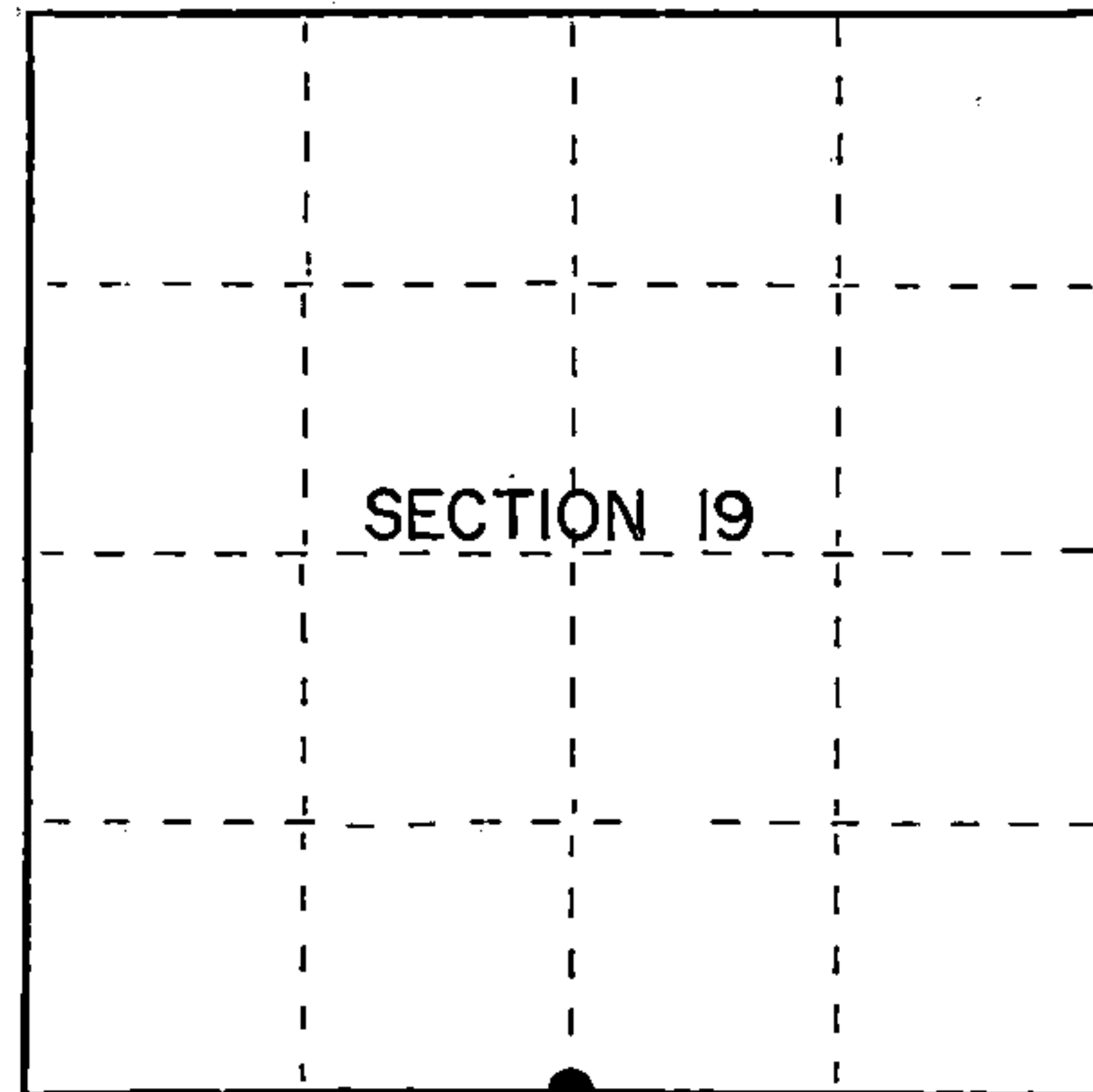
Index No.R-3.....

State of Wisconsin }
County of Forest } ss.

I, Gary L. Pisoni, do hereby
certify that on the 29th day
of June, 1989, I found
evidence of the South Quarter
corner of Section 19
Township 40, North, Range
14 East, Fourth Principal Meridian,
as described hereon; and that from this evidence
I established a new monument and accessories
as described hereon to perpetuate the original
location of this corner.

Resident witnesses:

.....
.....
.....



● = Corner monument restored.

History of original corner establishment:

Original Government Survey in 1865 by William E. Daugherty. East corrected between
Sections 19 and 30, 44.58 chains, set Quarter Section post to Sections 19 and 30,
from which the following bear;

Sugar	12"	S.09°E.	16 links
Sugar	12"	N.61°W.	20 links

Description of corner evidence found:

No corner evidence was recovered.

The corner position is restored at proportionate distance and on line between the
Southwest and Southeast Section Corners of Section 19.

Corner falls in middle of creek.

Description of monument and accessories I established to perpetuate the original location of this corner.

At the corner position, set a 3/4 inch diameter aluminum rod monument, 20 feet long,
13 inches above ^{surface} water, with an aluminum cap stamped; T40N, R14E, 1/4, S19, S30,
1989, S-1634. From which the following new blazed and scribed bearing trees bear (all
measurements taken to a nail in side of tree):

Steel rail	N.81°W.	15.36 feet
Steel sign post	N.30°W.	25.86 feet
Steel rail	N.55°E.	24.03 feet

Dated at Iron River, MI, this 2nd day of November, 1989.

Signature Gary L. Pisoni Title Land Surveyor Registration No. S-1634
(County Surveyor, Registered Land Surveyor, or other duly authorized official)

Office of Register of Deeds, County of Forest, I hereby certify that the within
instrument was filed in this office for record on the 20th day of September, 1990
at 10:45 o'clock A M.

(Register of Deeds)

By Deak Chittlo Deputy

44014190020

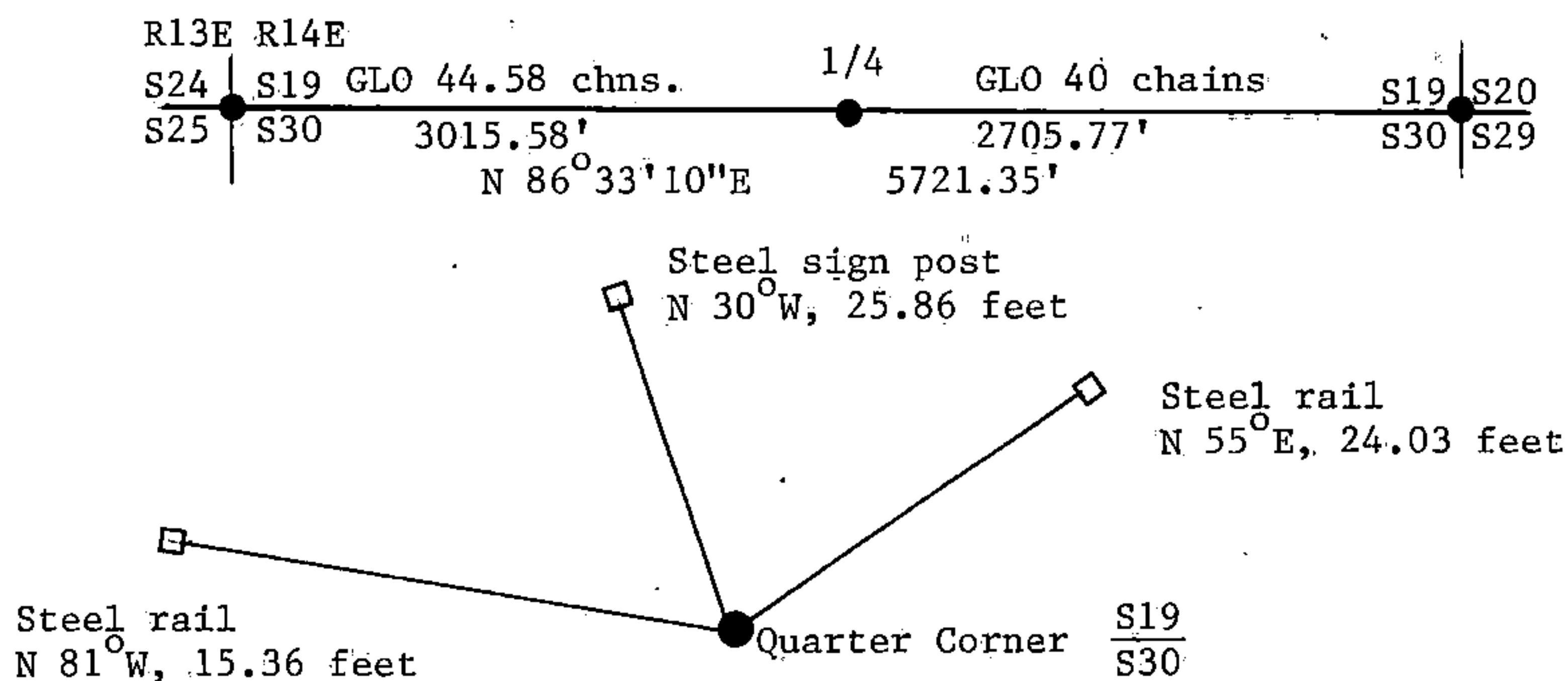
- e) Describe any material discrepancy between the location of the corner as restored or reestablished and the location of that corner as previously restored or reestablished by distance and direction. Show the discrepancy on the plan view drawing under (d), above. Show the distances between the corner as previously restored or reestablished and (1) the corner as restored or reestablished, and (2) to at least 2 of the witness monuments shown on the drawing in (d), above.

See drawing below.

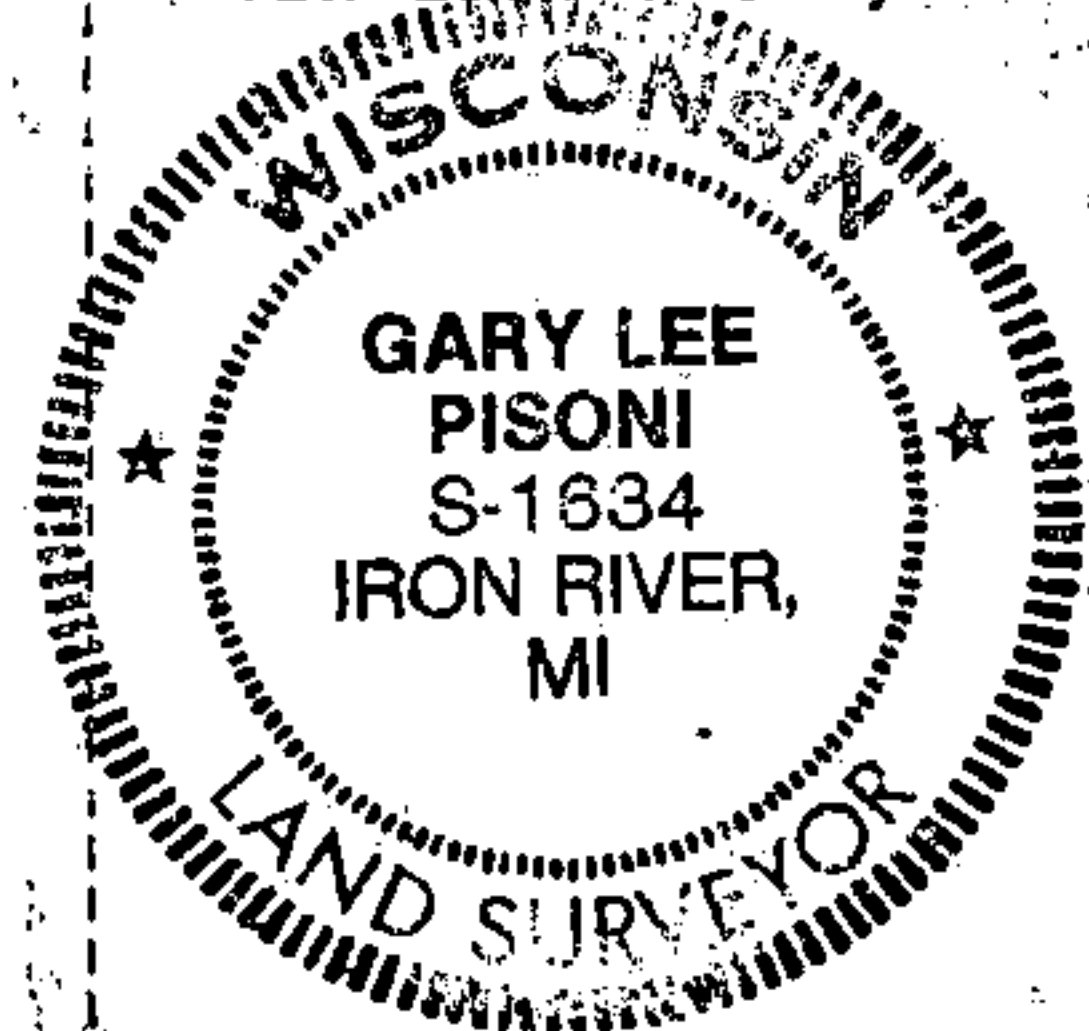
- (f) Was the corner restored through acceptance of (1) an obliterated evidence location, or, (2) a found perpetuated location?

Restored through lost corner proportionate methods.

- (g&h) Was the corner reestablished through lost corner proportionate methods? If so, show the method, including the directions and distances to other public land survey corners used as evidence or used for proportioning in determining the corner location?



Affix Land Surveyor Seal



- (i) I, Gary L. Pisoni
[Type or print name] certify that the corner location shown
on this record was determined by me or under my direction and
control and that this U.S. Public Land Survey Monument Record is
correct and complete to the best of my knowledge and belief.

Signature

Gary L. Pisoni

Date

Jan 12 1990

Survey requested by;

Edward J. Gergen
District Ranger

Date

9-18-90