

U.S. PUBLIC LAND SURVEY MONUMENT RECORD

Index No. N-11

State of Wisconsin }  
County of Forest } ss.

I Gary L. Pisoni, do hereby certify that on the 3rd day of September, 1986, I found evidence of the South quarter corner of Section 16 Township 40 North, Range 14 East, Fourth Principal Meridian, as described hereon; and that from this evidence I established a new monument and accessories as described hereon to perpetuate the original location of this corner.

Resident witnesses:

Mark Selmo

History of original corner establishment:

Original Government Survey in 1865 by Wm. E. Daugherty. West corrected between Sections 16 and 21, 40.09 chains, set Quarter post to Section 16 and 21, from which the following bear:

Tamarack 6" N.27°W. 7 links  
Cedar 8" S.31°E. 13 links

Description of corner evidence found:

No corner evidence was recovered.

The corner position is re-established at proportionate distance and on line between the Southwest and Southeast Section corners of Section 16.

Description of monument and accessories I established to perpetuate the original location of this corner.

At the corner position, set s 2 1/2" diameter aluminum pipe monument, 3 feet long, 32" in the ground, with an aluminum cap stamped: T40N, R14E, 1/4, S16, S21, 1986, S-1634. From which the following new blazed and scribed bearing trees bear (all measurements taken to a nail in side of tree):

Black Spruce 9" S.51°W. 13.76 feet  
Cedar 8" N.80°W. 14.49 feet  
Cedar 7" N.3°30'W. 10.26 feet  
Steel sign post S.50°E. 0.73 feet

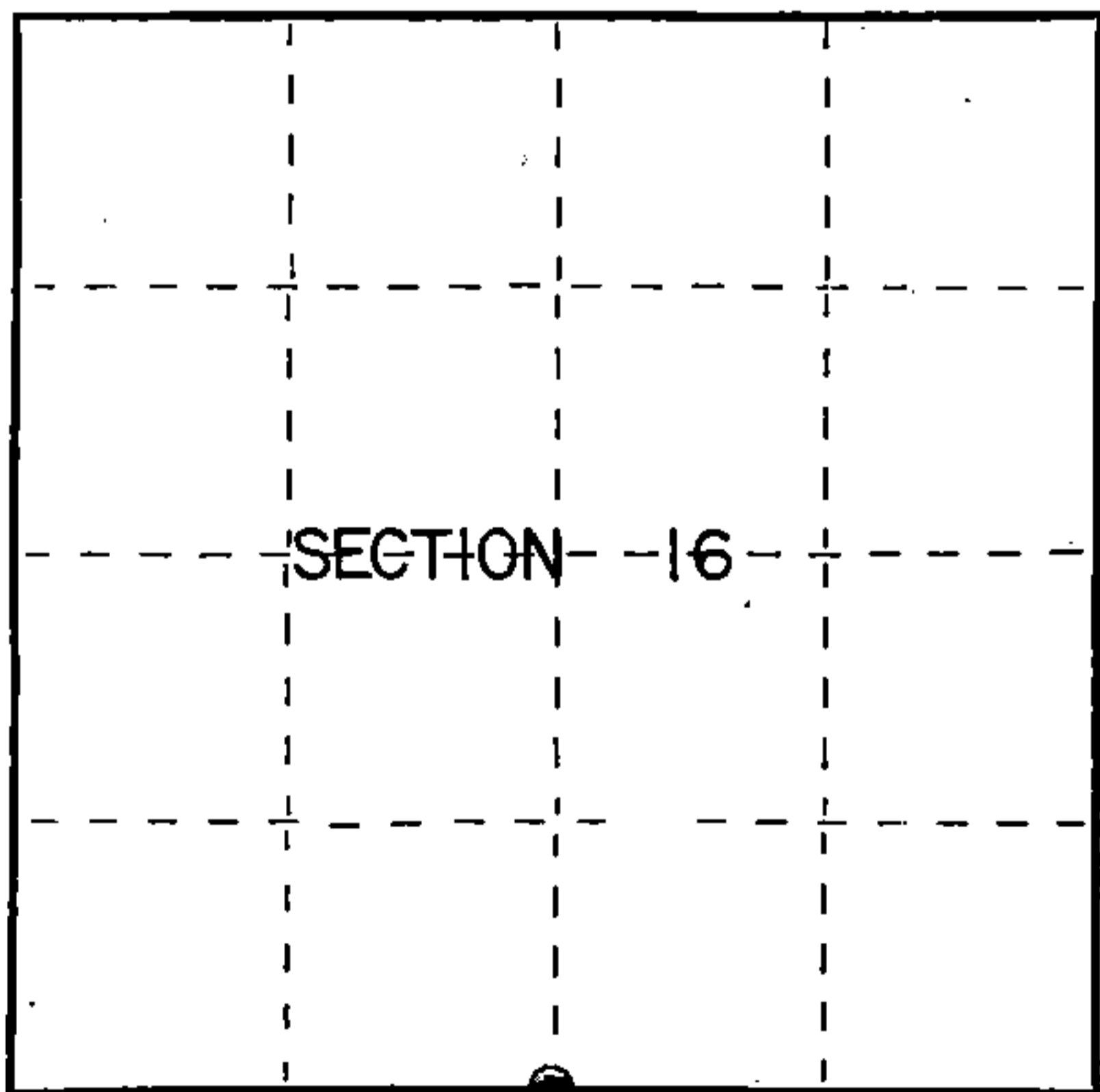
Dated at Iron River, MI, Wis., this 5th day of May, 1987

Signature Gary L. Pisoni Title Land Surveyor Registration No. S-1634  
(County Surveyor, Registered Land Surveyor, or other duly authorized official)

Office of Register of Deeds, County of Forest, I hereby certify that the within instrument was filed in this office for record on the 18th day of March, 1988 at 12:50 o'clock P. M.

Paul Aschenbrenner  
(Register of Deeds)

By Deputy



○ = Corner monument restored.

FORM NO. 985-A

H.C. Miller Company

Stock No. 26273

DOCUMENT NUMBER 134848

44014160020

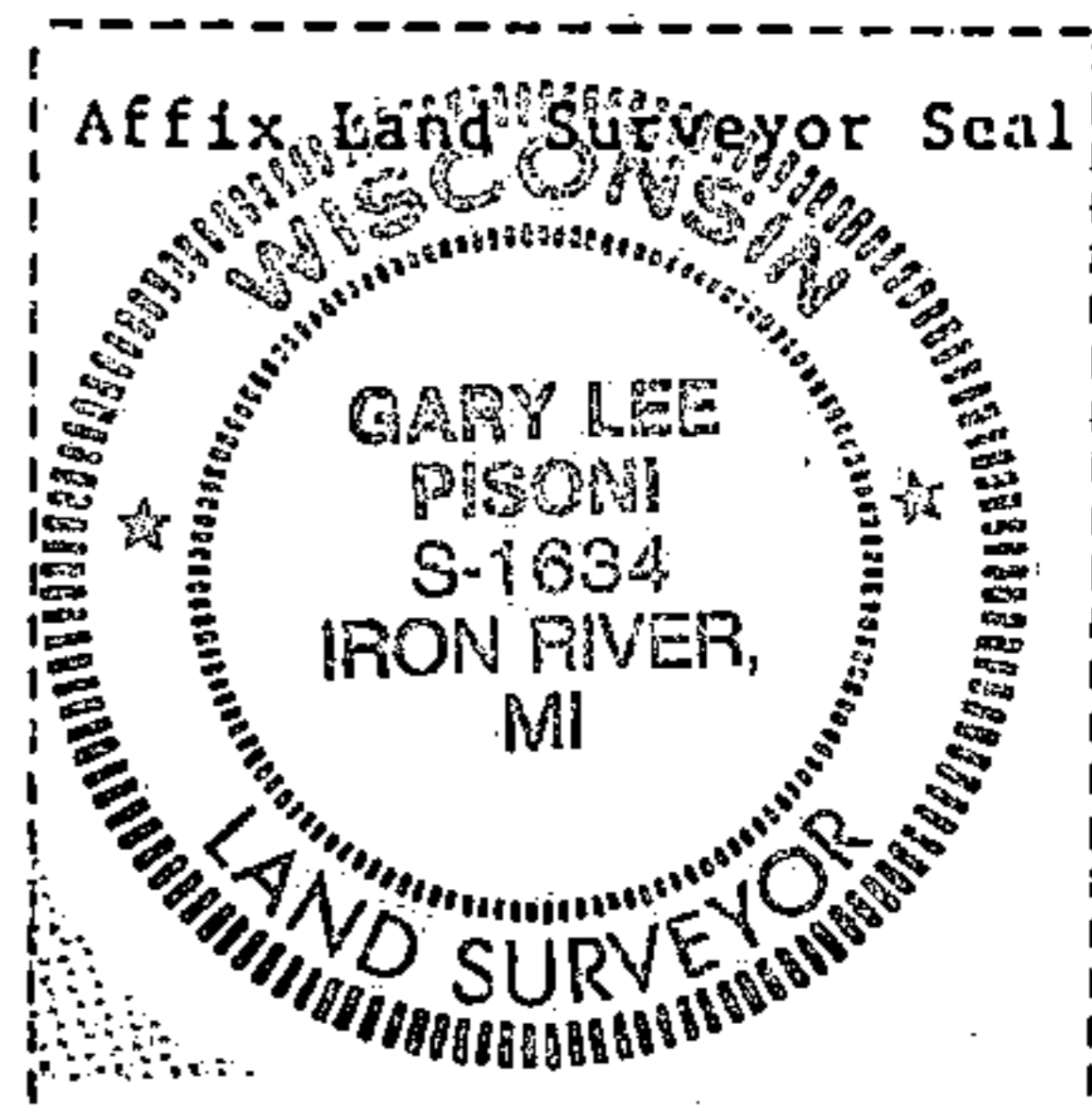
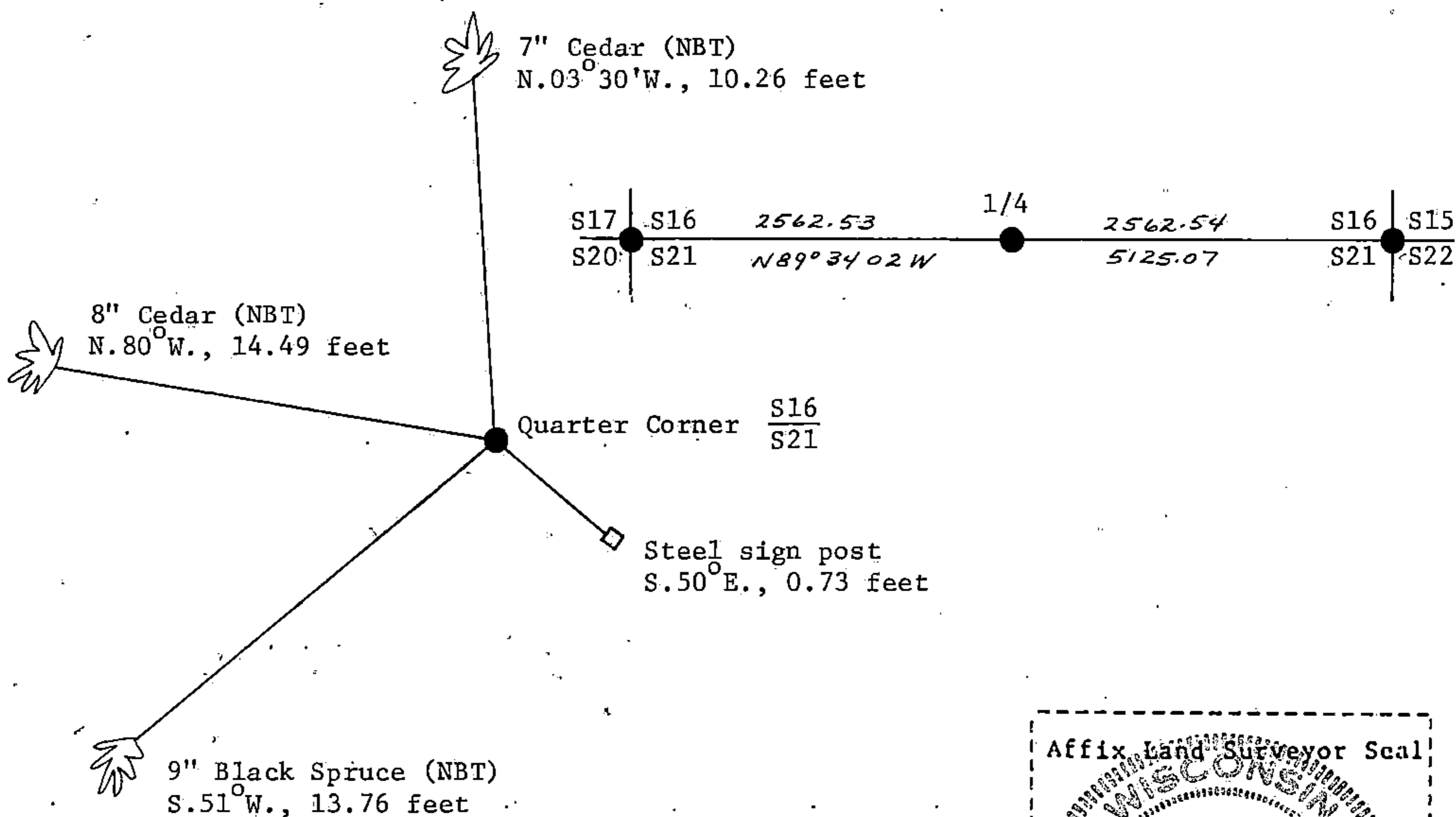
(e) Describe any material discrepancy between the location of the corner as restored or reestablished and the location of that corner as previously restored or reestablished by distance and direction. Show the discrepancy on the plan view drawing under (d), above. Show the distances between the corner as previously restored or reestablished and (1) the corner as restored or reestablished, and (2) to at least 2 of the witness monuments shown on the drawing in (d), above.

See drawing below.

(f) Was the corner restored through acceptance of (1) an obliterated evidence location, or, (2) a found perpetuated location?

Restored through lost corner proportionate methods.

(g&h) Was the corner reestablished through lost corner proportionate methods? If so, show the method, including the directions and distances to other public land survey corners used as evidence or used for proportioning in determining the corner location?



(i) I, Gary L. Pisoni  
[type or print name] certify that the corner location shown on this record was determined by me or under my direction and control and that this U.S. Public Land Survey Monument Record is correct and complete to the best of my knowledge and belief.

Gary L. Pisoni Signature May 5<sup>th</sup> 1987 Date

Survey requested by: Edward [Signature] District Ranger. 3-8-88 Date