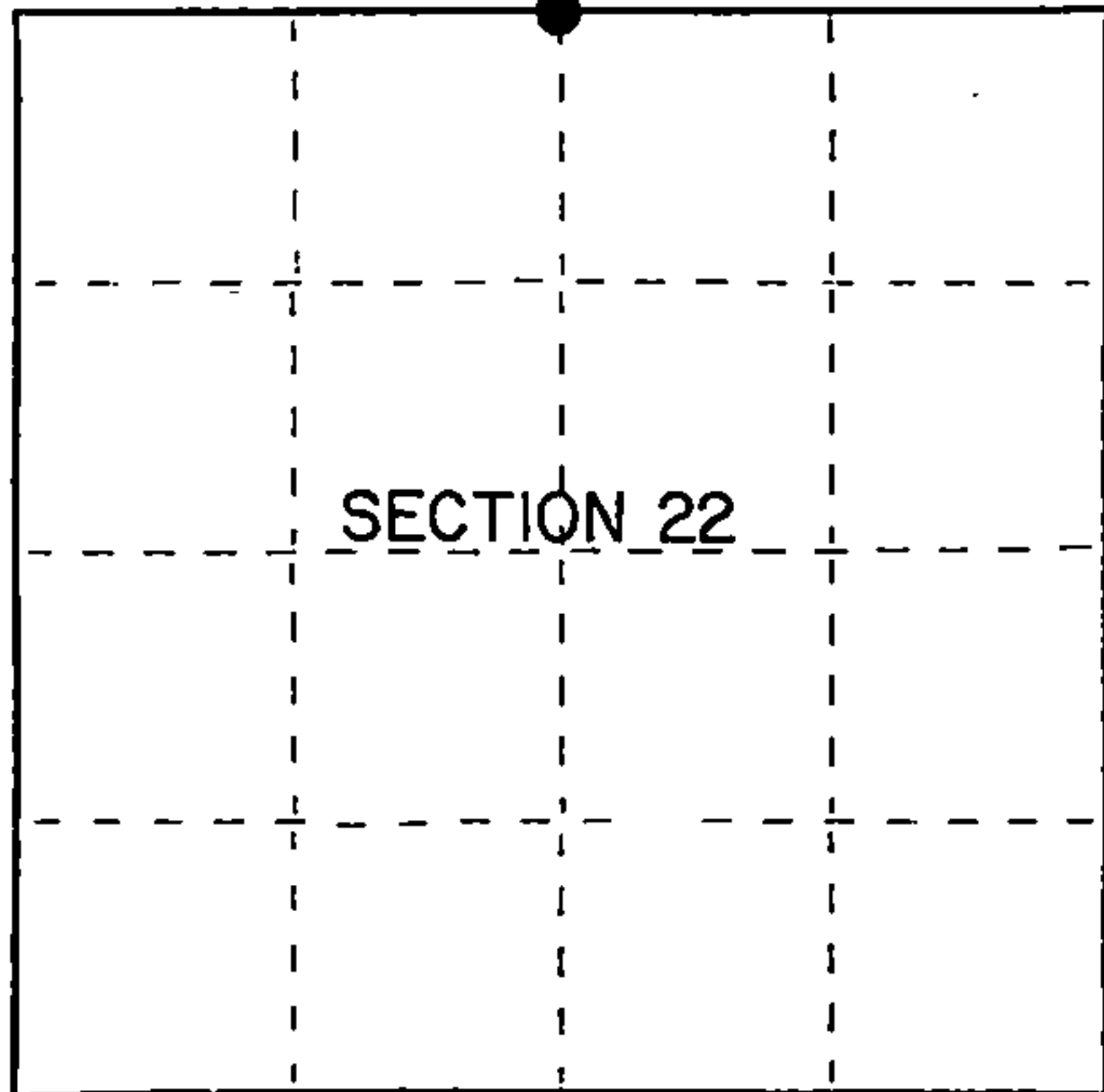


State of Wisconsin }  
County of Forest } ss.

I Gary L. Pisoni, do hereby certify that on the 7th day of November, 1989, I found evidence of the North quarter corner of Section 22 Township 40 North, Range 14 East, Fourth Principal Meridian, as described hereon; and that from this evidence I established a new monument and accessories as described hereon to perpetuate the original location of this corner.

Resident witnesses:

.....  
.....  
.....



● = Corner monument restored.

History of original corner establishment:

Dependent Resurvey in 1945 by Hugh B. Crawford. S 88°01'W between Sections 15 and 22 at 39.31 chains, set quarter corner which was determined by the SW corner of a fence, no remaining evidence of the original corner post or bearing trees. At the corner position, set a 4" dia. concrete monument 3' long, 28" in the ground with an iron post in center and brass cap marked: T40N, R14E, 1/4, S-15, S-22, 1945, from which the following bear:  
Poplar 4" N 69 1/2° E 31 1/2 links  
Poplar 4" N 10 3/4° W 50 links

Description of corner evidence found:

Found monument as described above, 8" above the ground.

All bearing trees are missing.

Description of monument and accessories I established to perpetuate the original location of this corner.

Blazed and scribed the following new bearing trees: (measurements taken to a nail in side of tree):

|                 |    |         |            |
|-----------------|----|---------|------------|
| Spruce          | 9" | N 53° E | 23.26 feet |
| Spruce          | 8" | S 64° E | 10.42 feet |
| Spruce          | 7" | S 11° W | 8.34 feet  |
| Spruce          | 7" | N 40° W | 23.71 feet |
| Steel sign post |    | West    | 0.70 feet  |

Dated at Iron River, MI, Wis. this 9th day of December, 1989

Signature Gary L. Pisoni Title Land Surveyor Registration No S-1634  
(County Surveyor, Registered Land Surveyor, or other duly authorized official)

Office of Register of Deeds, County of Forest, I hereby certify that the within instrument was filed in this office for record on the 20th day of September, 1990 at 10:45 o'clock A.M.

(Register of Deeds)  
By Seal Chitko Deputy

44014150020

FORM NO. 985-A

H.C. Miller Company

Stock No. 26273

DOCUMENT NUMBER

140476

16

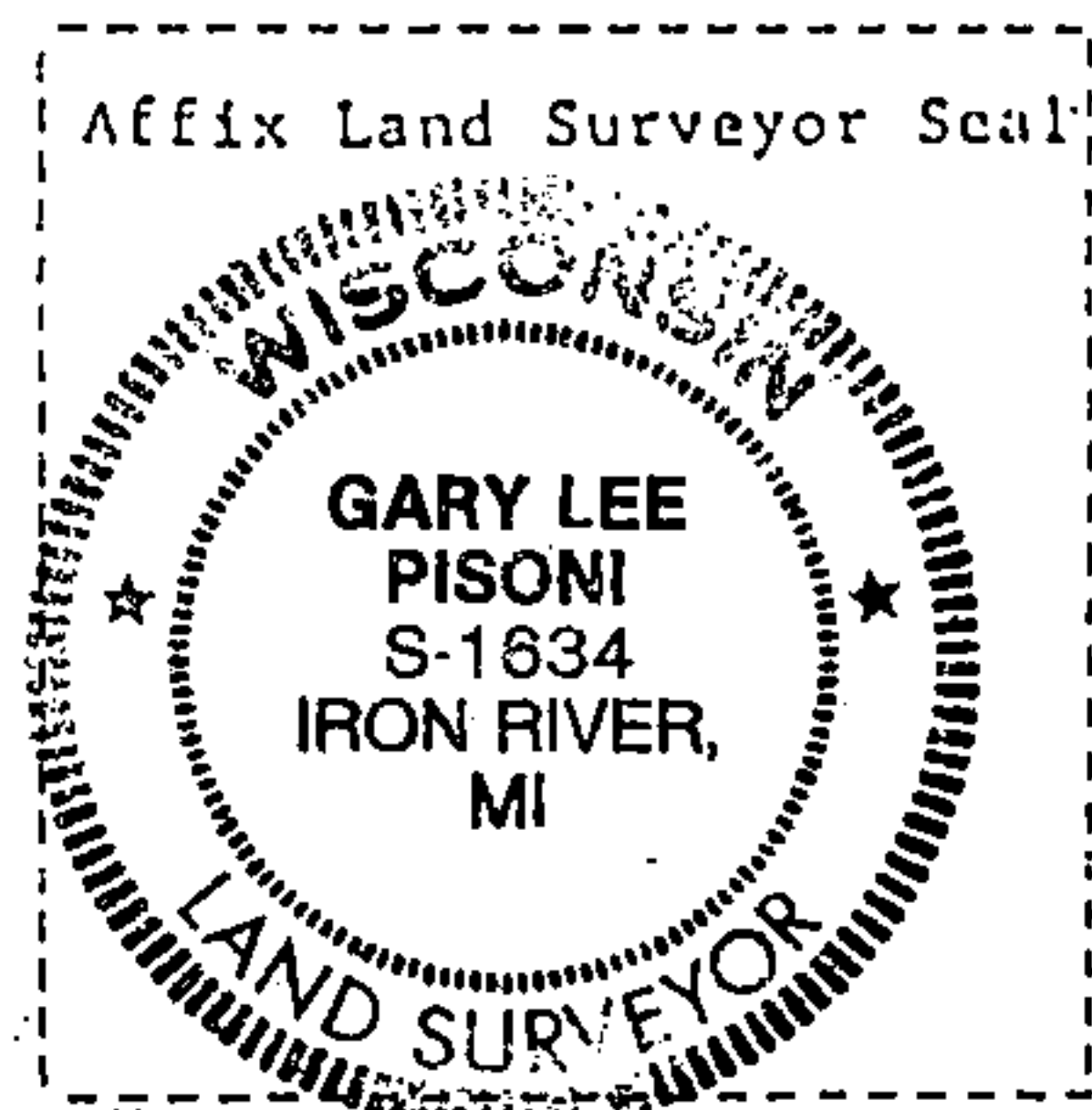
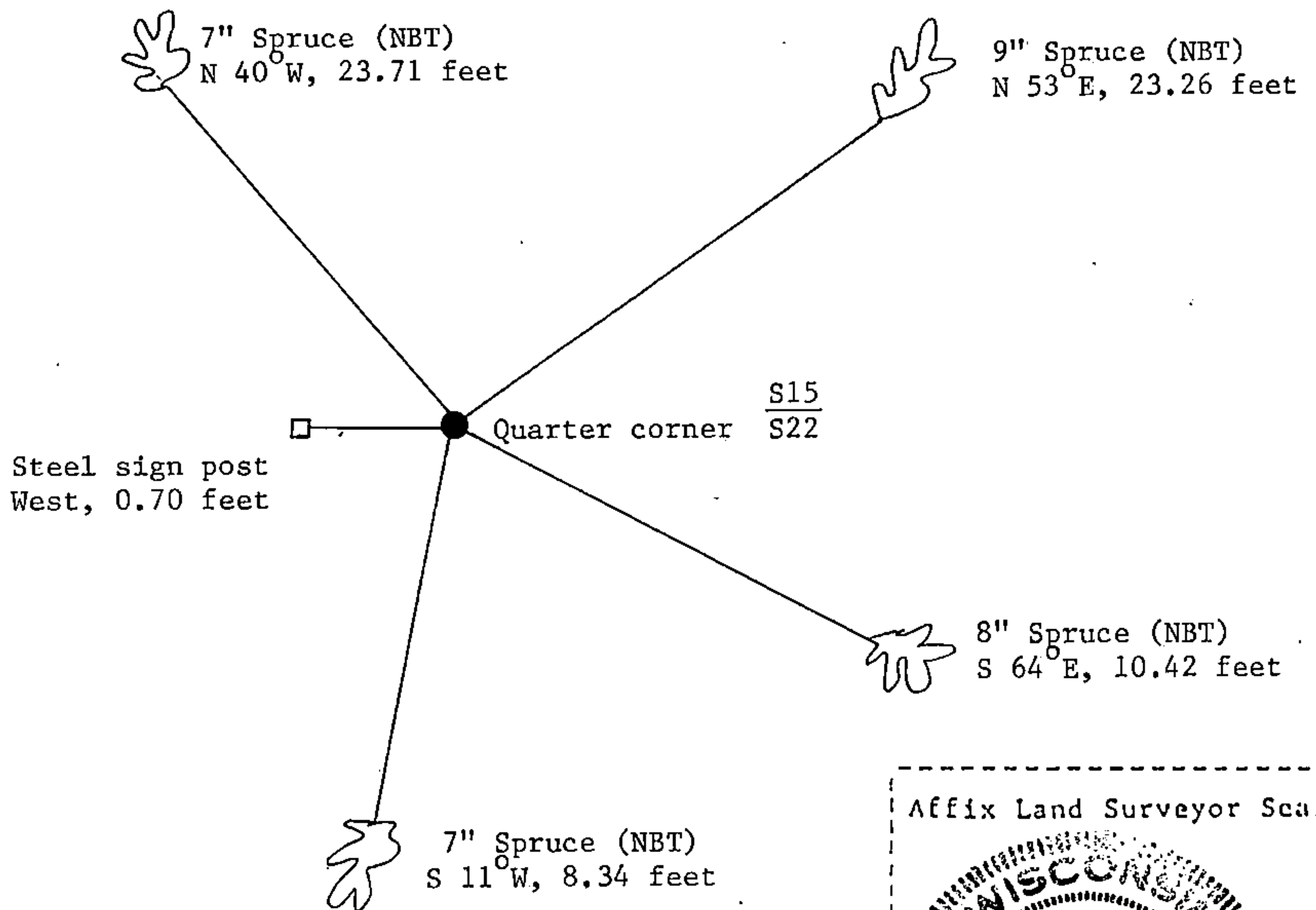
e) Describe any material discrepancy between the location of the corner as restored or reestablished and the location of that corner as previously restored or reestablished by distance and direction. Show the discrepancy on the plan view drawing under (d), above. Show the distances between the corner as previously restored or reestablished and (1) the corner as restored or reestablished, and (2) to at least 2 of the witness monuments shown on the drawing in (d), above.

See drawing below

(f) Was the corner restored through acceptance of (1) an obliterated evidence location, or, (2) a found perpetuated location?

Restored through acceptance of a found perpetuated location.

(g&h) Was the corner reestablished through lost corner proportionate methods? If so, show the method, including the directions and distances to other public land survey corners used as evidence or used for proportioning in determining the corner location?



(i) I, Gary L. Pisoni  
 (type or print name) certify that the corner location shown on this record was determined by me or under my direction and control and that this U.S. Public Land Survey Monument Record is correct and complete to the best of my knowledge and belief.

Gary L. Pisoni Signature Jan 12 1990 Date

Survey requested by: [Signature] District Ranger 7-18-91 Date