

State of Wisconsin } ss.  
County of Forest

I, Gary L. Pisoni, do hereby certify that on the 9th day of September, 1989, I found evidence of the North quarter corner of Section 23 Township 40 North, Range 14 East, Fourth Principal Meridian, as described hereon; and that from this evidence I established a new monument and accessories as described hereon to perpetuate the original location of this corner.

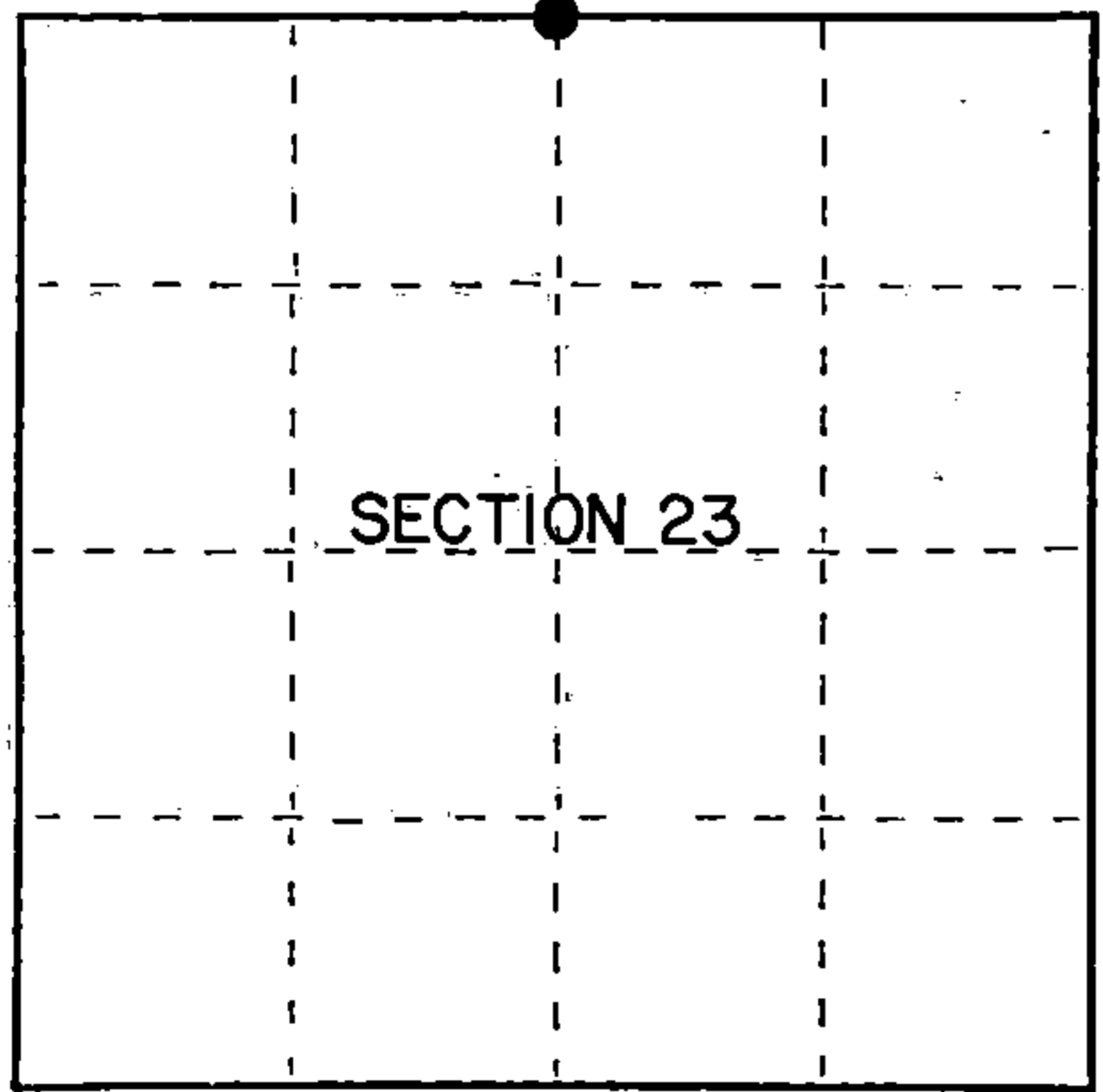
Resident witnesses:  
\_\_\_\_\_  
\_\_\_\_\_  
\_\_\_\_\_

History of original corner establishment:  
Dependent Resurvey in 1945 by Hugh B. Crawford. S 89°14'W between Sections 14 and 23, 39.54 chains, corner set at proportionate distance and point falls in North lane of gravel road, set a concrete monument, 12" long, 6" dia., no marks. In 1945, set a concrete W.C., South, 50 links, monument is 3' long, 5" dia., 24" in the ground with brass cap marked as W.C. (witness corner)  
No corner references were ever set for the quarter corner in the road.

Description of corner evidence found:  
Found monument as described above, top of monument broken off.

Description of monument and accessories I established to perpetuate the original location of this corner.  
Replaced concrete monument with no marks with a 2½" diameter aluminum pipe monument, 3 feet long, 8" below the surface of the road, with an aluminum cap stamped: T40N, R14E, 1/4, S-14, S-23, 1989, S-1634 from which the following new blazed and scribed bearing trees bear (all measurements taken to a nail in side of tree):

Sugar Maple	8"	N 48°E.	57.53 feet
Sugar Maple	6"	S.52°W	51.18 feet
Sugar Maple	6"	N 07°W	39.03 feet
Witness corner	6" dia.	South	33.00 feet



● = Corner monument restored.

Dated at Iron River, MI, Wis., this 9th day of December, 1989

Signature: Gary L. Pisoni Title: Land Surveyor Registration No: S-1634  
(County Surveyor, Registered Land Surveyor, or other duly authorized official)

Office of Register of Deeds, County of Forest, I hereby certify that the within instrument was filed in this office for record on the 20th day of September, 1990 at 10:45 o'clock A.M.

(Register of Deeds)  
By: [Signature] Deputy

FORM NO. 985-A  
H.C. Miller Company  
MILWAUKEE, WISCONSIN

Stock No. 26273

DOCUMENT NUMBER  
140478

74014.140020

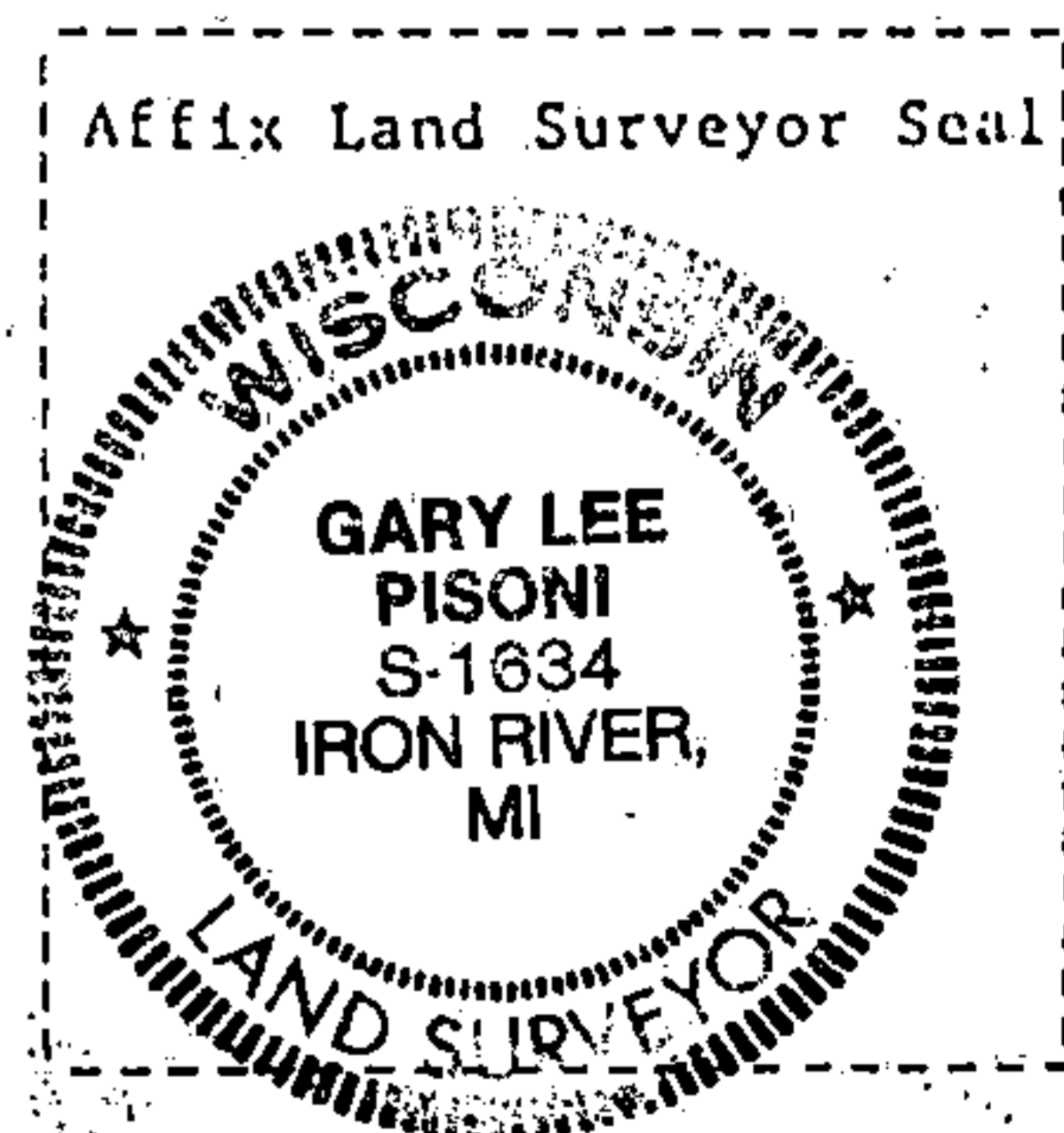
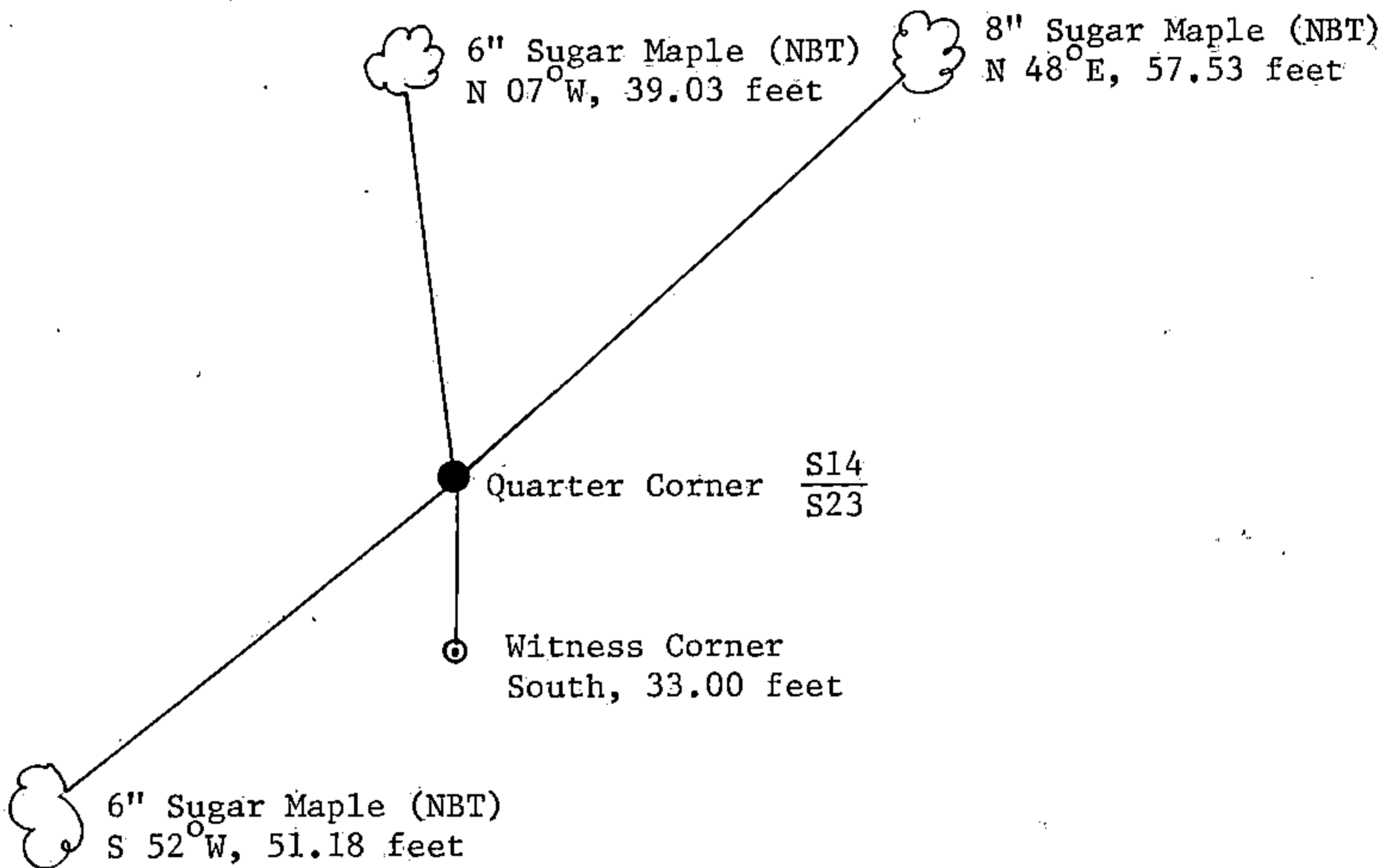
e) Describe any material discrepancy between the location of the corner as restored or reestablished and the location of that corner as previously restored or reestablished by distance and direction. Show the discrepancy on the plan view drawing under (d), above. Show the distances between the corner as previously restored or reestablished and (1) the corner as restored or reestablished, and (2) to at least 2 of the witness monuments shown on the drawing in (d), above.

See drawing below.

(f) Was the corner restored through acceptance of (1) an obliterated evidence location, or, (2) a found perpetuated location?

Restored through acceptance of a found perpetuated location.

(g&h) Was the corner reestablished through lost corner proportionate methods? If so, show the method, including the directions and distances to other public land survey corners used as evidence or used for proportioning in determining the corner location?



(i) I, Gary L. Pisoni  
 (type or print name) certify that the corner location shown on this record was determined by me or under my direction and control and that this U.S. Public Land Survey Monument Record is correct and complete to the best of my knowledge and belief.

Gary L. Pisoni Jan 12 1990  
 Signature Date

Survey requested by: [Signature] 7-18-90  
 District Ranger Date

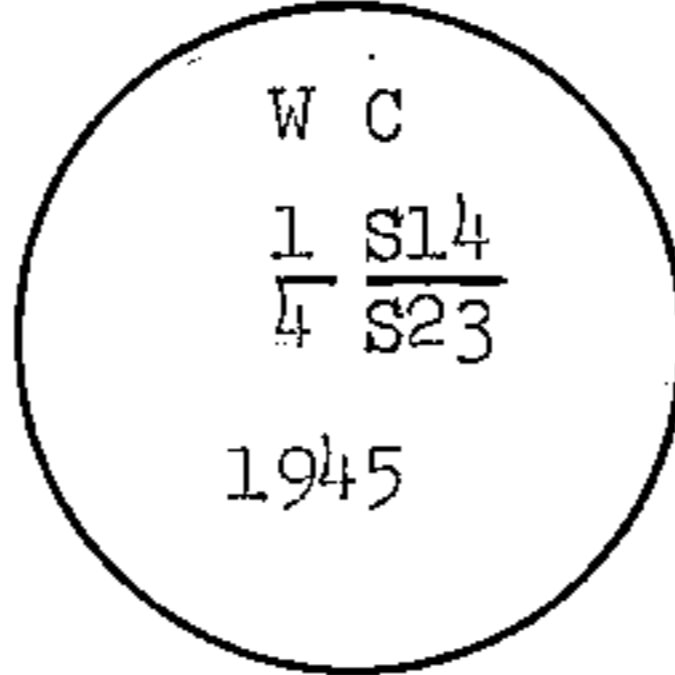
CERTIFIED LAND CORNER RESTORATION

State of Wisconsin }  
County of Forest } ss.

I Jean F. Resvick, do hereby certify that on the 22 day of October, 19 68, I found evidence of the North quarter corner of Section 23 Township 40 North, Range 14 East, Fourth Principal Meridian, as described hereon; and that from this evidence I established a new monument and accessories as described hereon to perpetuate the original location of this corner:

Description of original monument and accessories and subsequent restorations:

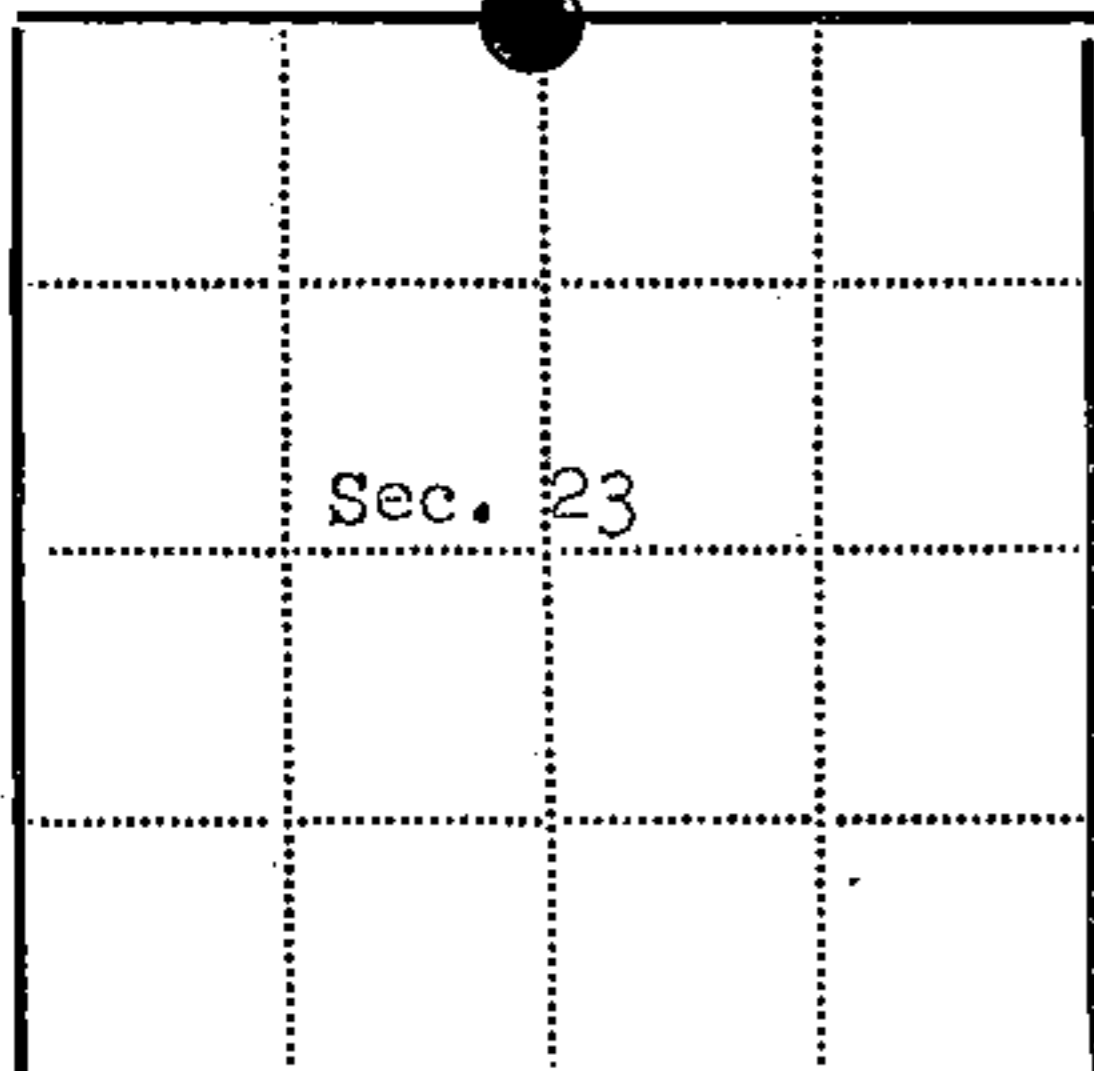
Original survey in 1865 by Wm. E. Daugherty. Dependent resurvey in 1945 by Hugh B. Crawford. At proportional distance set a concrete monument 12 inches long, 6 inches in diameter, 24 inches in the ground. Point falls 8 lks. north of center line of road. At a point 50 lks. south of corner set a concrete monument, 3 feet long, 5 inches in diameter, 24 inches in the ground with brass cap marked



Description of corner evidence found:  
W.C. Monument found a described.  
Elm 12, bears N50E, 73 ft.  
Maple 5, bears S70°45'E, 26 ft.  
Dug in road and found corner in place.

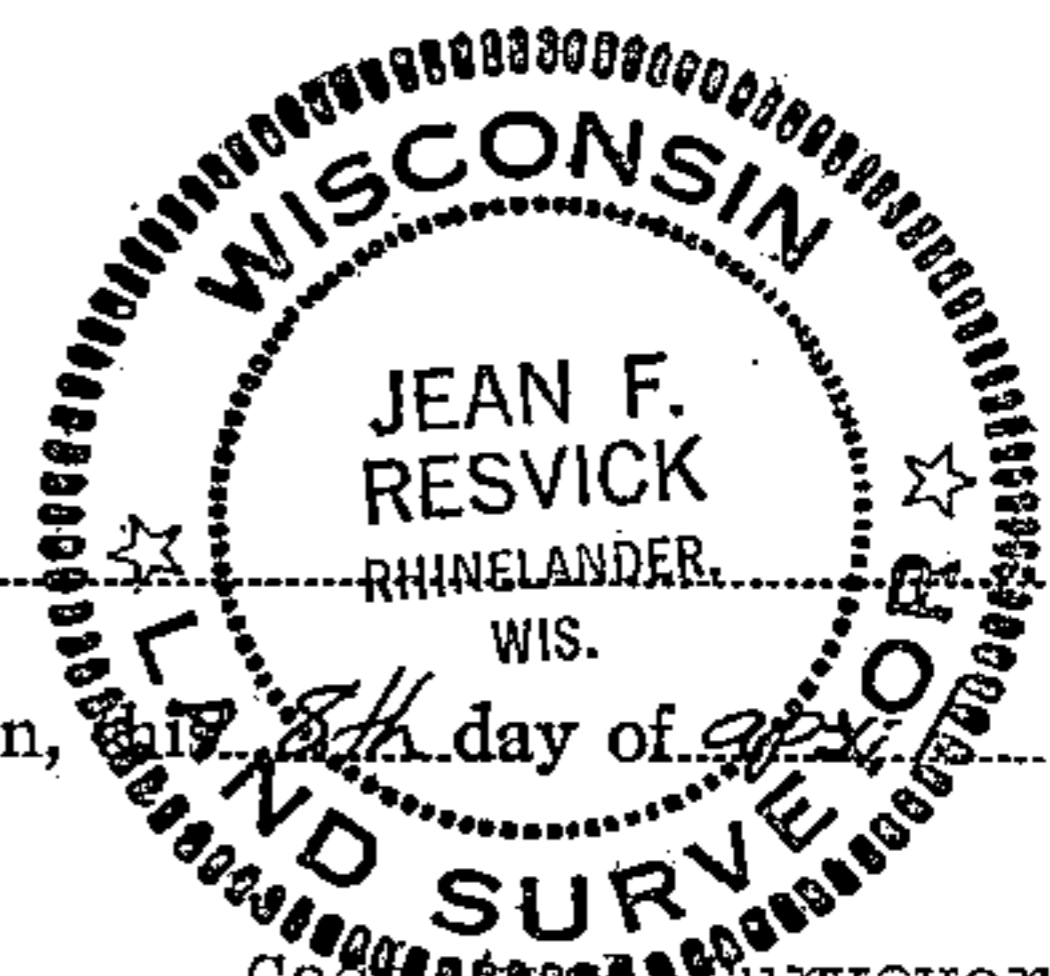
Description of monument and accessories I established to perpetuate the original location of this corner:  
Set 4 x 4 cedar post 33 ft. north of corner.

44014140020



● = Corner monument restored  
□ =

Resident witnesses.....  
Dated at Rhinelander, Wisconsin, 22th day of Oct, 19 70  
Signature Jean F. Resvick Title Cadastral Surveyor  
(County Surveyor, Registered Land Surveyor, or other duly authorized official)



Surveyors Registration No. S-802 DOCUMENT No. 98067

Office of Register of Deeds County of Forest  
I hereby certify that the within instrument was filed in this office for record on the 22nd day of May 19 70, and was filed in Book No. Page No. N-19 of County Records.

Signature Eugene Stegany Title Register of Deeds

Township 40 North, Range 14 East, Section 23, Index No. N-19, Page No.

N19

CERTIFIED LAND CORNER RESTORATION AND ESTABLISHMENT ALONG THE NORTH HALF SECTION LINE BETWEEN SECTIONS FOURTEEN AND FIFTEEN, AND SOUTH HALF SECTION LINE BETWEEN SECTIONS TEN AND ELEVEN. ALL IN TOWNSHIP FORTY NORTH, RANGE FOURTEEN EAST OF FOURTH PRINCIPAL MERIDIAN, FOREST COUNTY, WISCONSIN.

GENERAL NOTES

This survey was made by the U. S. Department of Agriculture, Forest Service, for the purpose of establishing and perpetuating the corners and marking the boundaries between U. S. Government Land and Private Land.

In 1944 the General Land Office made a dependent resurvey of a portion of the boundaries and subdivisional lines of Sections 10, 11, 14 and 15, T40N, R14E.

The Dependent Resurvey records the measured distances and bearings of the line North between Sections 14 and 15 and Sections 10 and 11 and describes the location of these Section Corners. The locations for these land corners were not monumented in the survey of 1944.

I began at the quarter corner between Sections 14 and 15 and measured the recorded bearing and distances North to the section corner between Sections 10, 11, 14 and 15 as described in the 1944 Dependent Resurvey Notes, thence North  $3^{\circ}28'$  East on record bearing and distance to the quarter corner position as described in the 1944 Dependent Resurvey Notes. Point for quarter corner between Section 10 and 11 was found marked by a squared Hemlock Post 1.5 feet below surface of the road. The distances were then rechaind and adjusted between the quarter corner, between Section 10 and 11 and the quarter corner between Sections 14 and 15.

The four corners established were monumented as shown on the plat map, new corner accessories were established as described below:

Section Corner common to Sections 10, 11, 14 and 15.

W. Spruce, bears N. $31^{\circ}$ E., 118.84 feet, scribed BT.  
Elm, 5" diam., bears S. $42^{\circ}30'$ W., 65.09 feet, scribed BT.  
W. Spruce, 6" diam., bears S. $64^{\circ}30'$ W., 55.49 feet, scribed BT.  
W. Spruce, 5" diam., bears N. $39^{\circ}30''$ W., 48.35 feet, scribed BT.  
4 x 4 Cedar Post set 30.0 feet East of the monument.  
Corner is 3.0 feet East of Center line of road and 8 inches below the surface of the road.

Quarter Section Corner between Sections 10 and 11.

Corner is on the Center Line of the road and 1.0 feet below the surface of the road in line with fences East and West.

North Sixteenth Corner between Sections 14 and 15.

Spruce, 5" diam., bears S. $53^{\circ}$ E., 32.23 feet, scribed BT.  
W. Birch, 10" diam., bears S. $89^{\circ}$ W., 31.74 feet, scribed BT.  
4 x 4 Cedar Post set 25.5 feet East of the monument.

CERTIFIED LAND CORNER RESTORATION AND ESTABLISHMENT ALONG THE NORTH HALF SECTION LINE BETWEEN SECTIONS FOURTEEN AND FIFTEEN, AND SOUTH HALF SECTION LINE BETWEEN SECTIONS TEN AND ELEVEN. ALL IN TOWNSHIP FORTY NORTH, RANGE FOURTEEN EAST OF FOURTH PRINCIPAL MERIDIAN, FOREST COUNTY WISCONSIN.

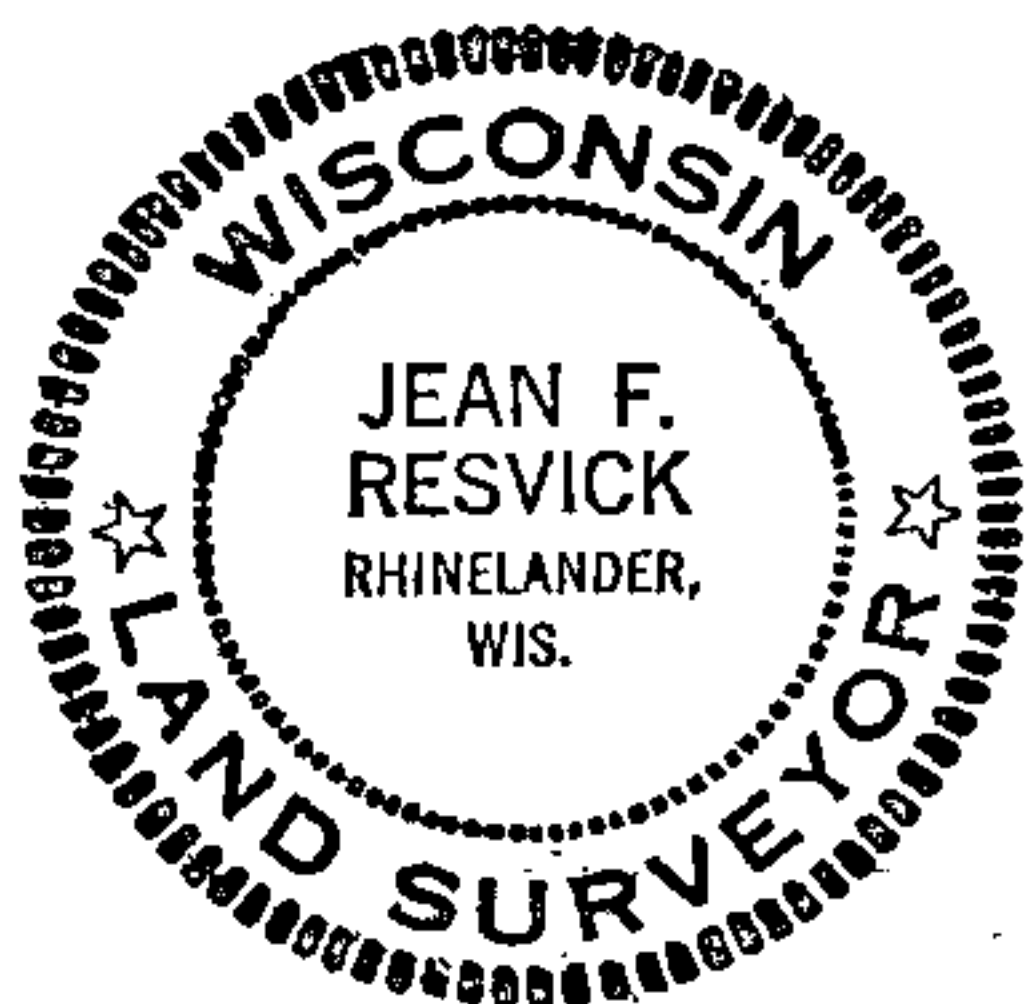
South Sixteenth Corner between Sections 10 and 11.

Tamarack, 5" diam., bears S.32°E., 32.58 feet, scribed BT.  
Tamarack, 6" diam., bears S.62°W., 60.15 feet, scribed BT.  
4 x 4 Cedar Post set 28 feet West of the Monument.  
Corner is on the East edge of the road.

SURVEYOR'S AFFIDAVIT

STATE OF WISCONSIN )  
) SS  
COUNTY OF FOREST )

I, Jean F. Resvick, do hereby certify that on the 24th day of April, 1969, I established the section corner common to Sections 10, 11, 14 and 15, the North one-sixteenth between Sections 14 and 15, the South one-sixteenth between Sections 10 and 11 and the quarter section corner between Sections 10 and 11, Township 40 North, Range 14 East, Fourth Principal Meridian, in accordance with the rules for subdivision of the public lands. The plat map hereon is a correct representation of the method used and of the monuments and accessories as established and described to perpetuate the location of these corners.



*Jean F. Resvick*

Cadastral Surveyor - U.S. Forest Service  
Wisconsin Registered Land Surveyor  
Certificate No. S-802