

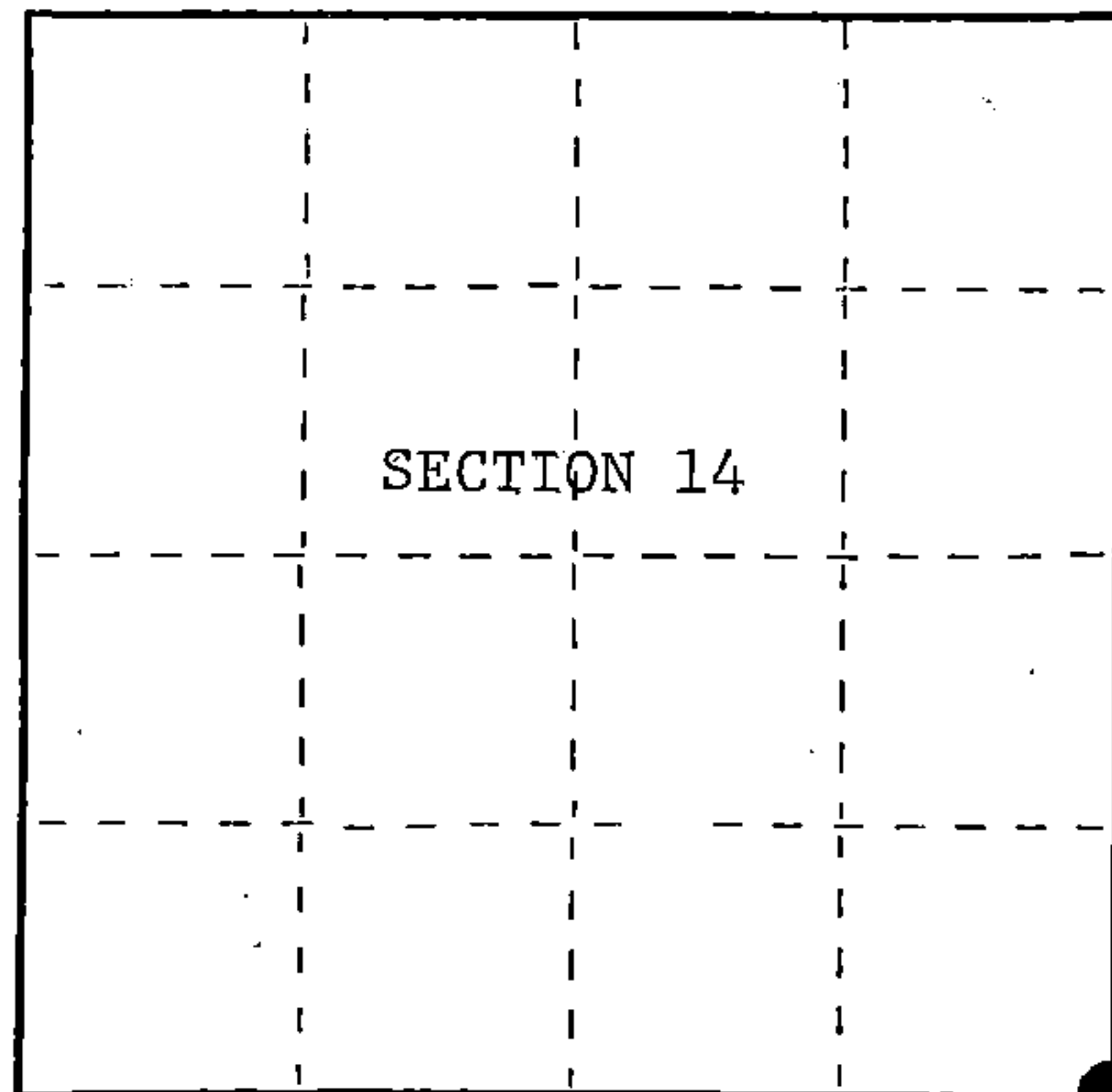
U.S. PUBLIC LAND SURVEY MONUMENT RECORD

Index No. N - 21

State of Wisconsin }
County of Forest } ss.

I, William B. Cochrane, do hereby certify that on the 23rd day of June, 1981, I found evidence of the Southeast Section corner of Section 14 Township 40, North, Range 14 East, Fourth Principal Meridian, as described hereon; and that from this evidence I established a new monument and accessories as described hereon to perpetuate the original location of this corner.

Resident witnesses:



○ = Corner monument restored.

History of original corner establishment:
Original Government Survey in 1865 by William E. Daugherty.

Dependent Resurvey in 1945 by Hugh B. Crawford. From the remains of original bearing trees, set a concrete monument, 24 inches long, 6 inches in diameter, 18 inches in the ground, with an iron post in center, and a brass cap marked; T40N, R14E, S13, S14, S23, S24, 1945. From which the following bear;

W. Birch	4"	S47°30'E	49.5 lks.	In September of 1967, Jean Resvick,
W. Birch	4"	N49°30'E	36.0 lks.	a Land Surveyor with the Forest
Spruce	4"	S74°15'W	19.0 lks.	Service, blazed and scribed a
Poplar	5"	N39°45'W	63.0 lks.	4" Spruce, N28°W, 45.61 feet.

Description of corner evidence found:

Found monument as described and in place, from which the following bear;

W. Birch	10"	N49°30'E	23.76 feet
W. Birch	11"	S47°30'E	32.34 feet
Spruce	9"	S74°15'W	12.54 feet
Spruce	6"	N28°W	45.61 feet
Steel Sign Post		NW	2.00 feet

Description of monument and accessories I established to perpetuate the original location of this corner.

None

Dated at Hiles, Wis., this 4th day of January, 1988

Signature William B. Cochrane Title Land Surveyor Registration No. S-1107
(County Surveyor, Registered Land Surveyor, or other duly authorized official)

Office of Register of Deeds, County of Forest, I hereby certify that the within instrument was filed in this office for record on the 18th day of March, 1988 at 12:50 o'clock P. M.

Paul Aschendanner
(Register of Deeds)

By _____ Deputy

FORM NO. 985-A

H.C. Miller Company
MINNEAPOLIS, MINN.

Stock No. 26273

DOCUMENT NUMBER 134842

440141400000

(e) Describe any material discrepancy between the location of the corner as restored or reestablished and the location of that corner as previously restored or reestablished by distance and direction. Show the discrepancy on the plan view drawing under (d), above. Show the distances between the corner as previously restored or reestablished and (1) the corner as restored or reestablished, and (2) to at least 2 of the witness monuments shown on the drawing in (d), above.

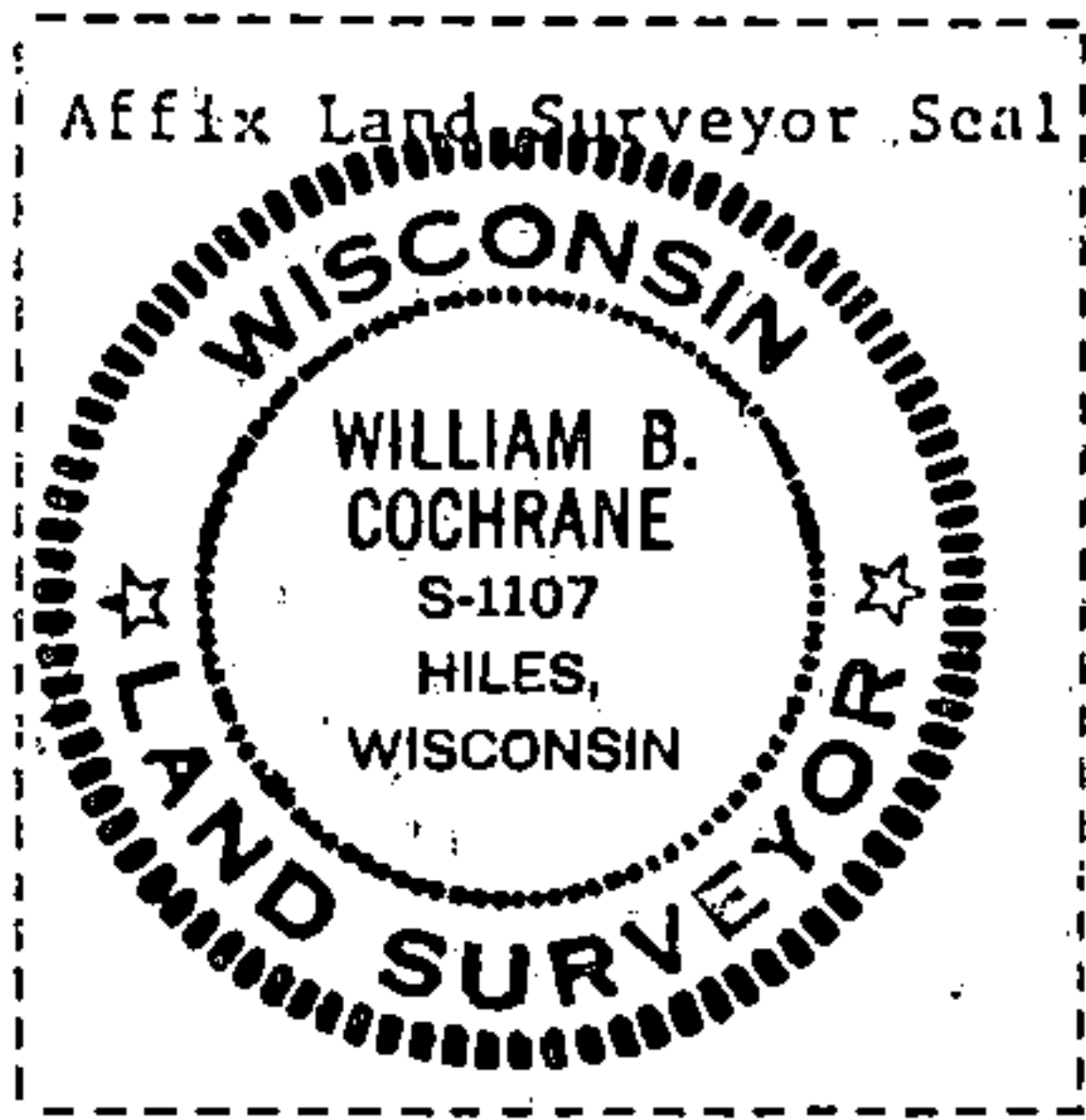
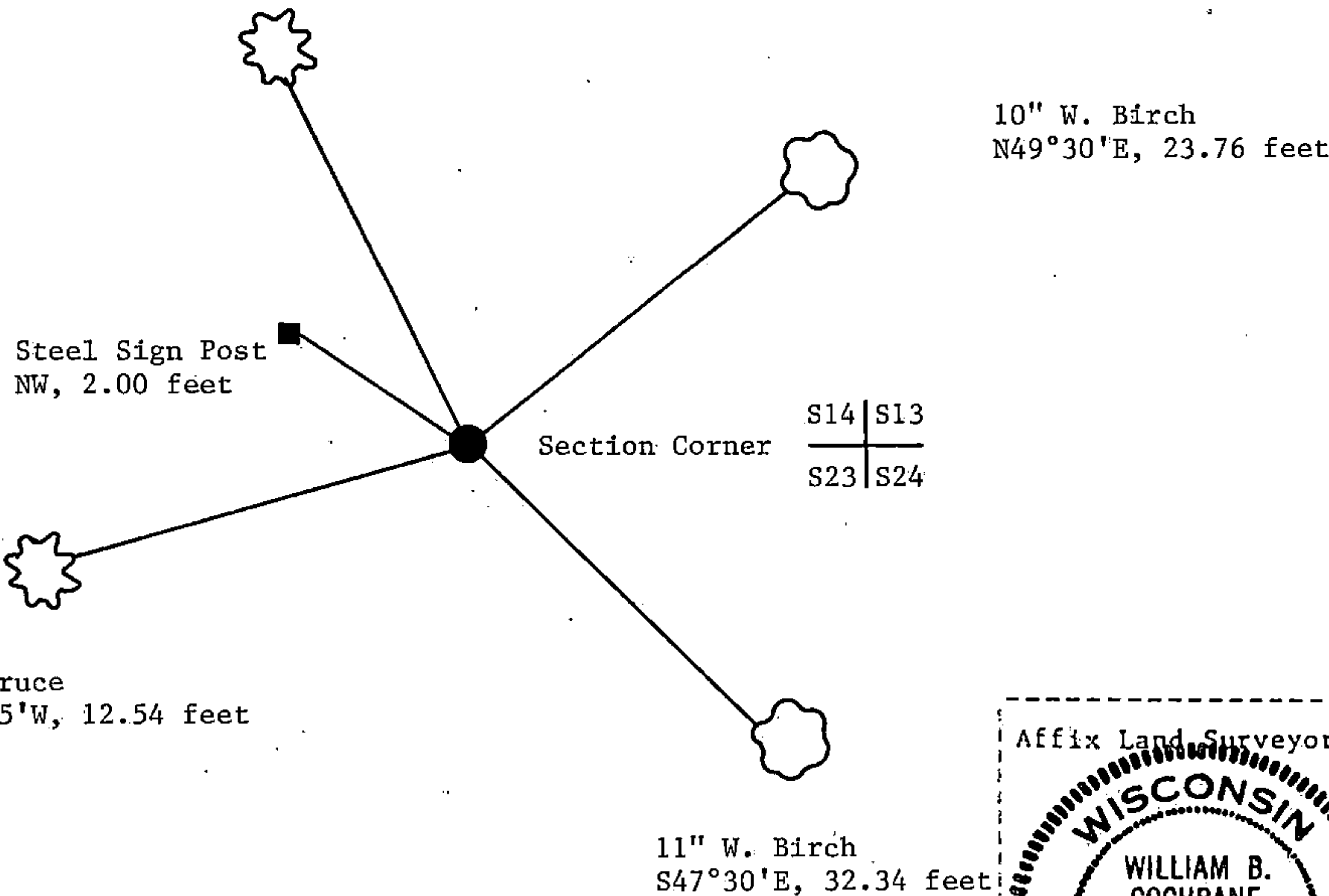
See drawing below.

(f) Was the corner restored through acceptance of (1) an obliterated evidence location, or, (2) a found perpetuated location?

Restored through acceptance of a found perpetuated location.

(g&h) Was the corner reestablished through lost corner proportionate methods? If so, show the method, including the directions and distances to other public land survey corners used as evidence or used for proportioning in determining the corner location?

6" Spruce
N28°W, 45.61 feet



(i) William B. Cochrane
(type or print name) certify that the corner location shown on this record was determined by me or under my direction and control and that this U.S. Public Land Survey Monument Record is correct and complete to the best of my knowledge and belief.

William B. Cochrane Jan. 12, 1988
Signature Date

Survey requested by: Edward A. [Signature] 3-8-88
District Ranger Date