

U.S. PUBLIC LAND SURVEY MONUMENT RECORD

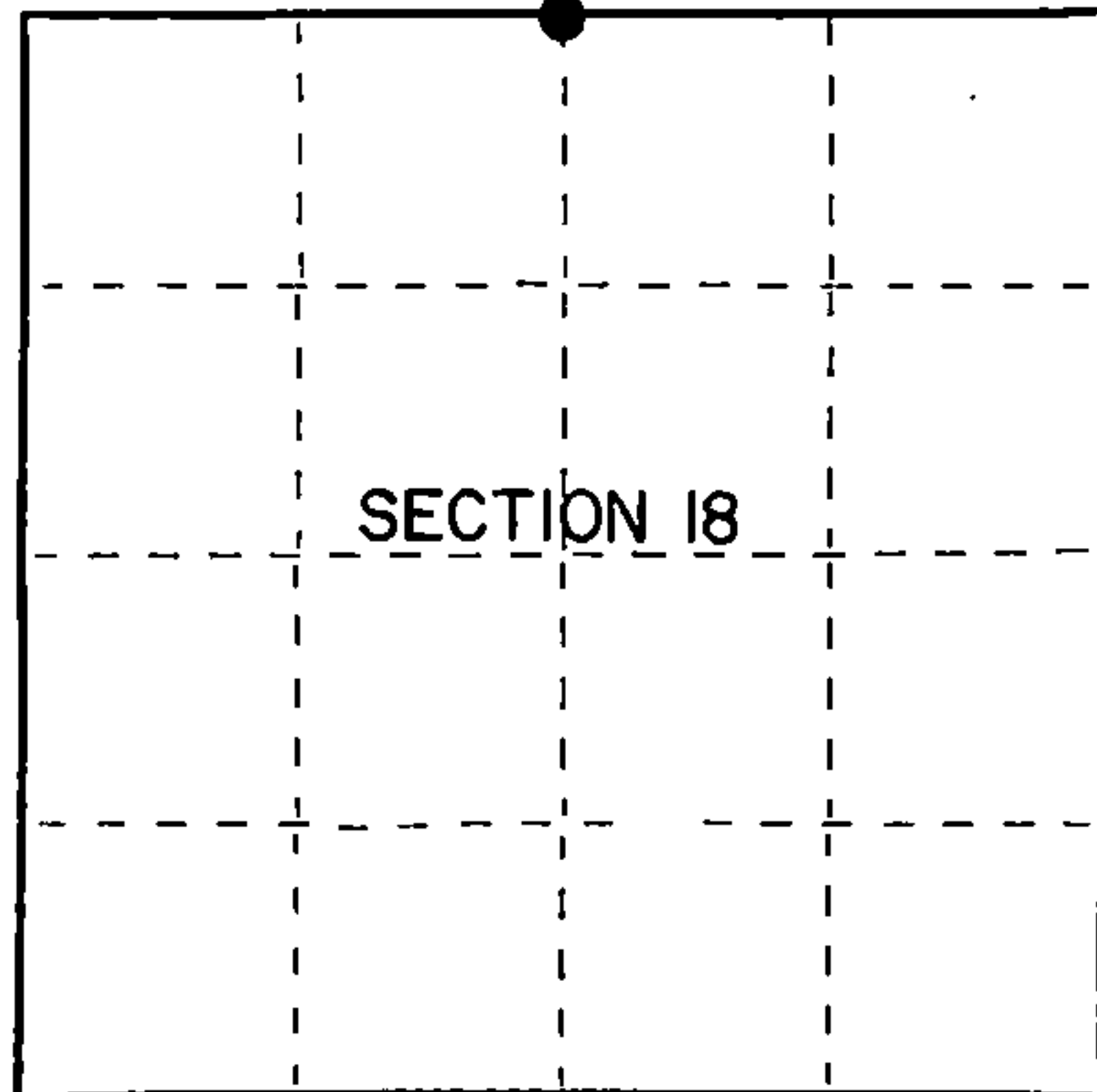
Index No. J-3

State of Wisconsin }
County of Forest } ss.

I, Gary L. Pisoni, do hereby certify that on the 28th day of June, 1989, I found evidence of the North Quarter corner of Section 18 Township 40 North, Range 14 East, Fourth Principal Meridian, as described hereon; and that from this evidence I established a new monument and accessories as described hereon to perpetuate the original location of this corner.

Resident witnesses:

.....
.....
.....



● = Corner monument restored.

History of original corner establishment:

Original Government Survey in 1865 by William E. Daugherty. East corrected between Sections 7 and 18, 47.11 chains, set Quarter Section post to Sections 7 and 18, from which the following bear;

Tamarack	15"	N.39°E.	22 links
Tamarack	20"	S.25°W.	25 links

Description of corner evidence found:

No corner evidence was recovered.

The corner position is restored at proportionate distance and on line between the Northwest and Northeast Section corners of Section 18.

Description of monument and accessories I established to perpetuate the original location of this corner.

At the corner position, set a 2½ inch diameter aluminum pipe monument, 3 feet long, 30 inches in the ground, with an aluminum cap stamped; T40N, R14E, 1/4, S7, S18, 1989, S-1634. From which the following new blazed and scribed bearing trees bear (all measurements taken to a nail in side of tree):

Sugar Maple	13"	N.67°E.	27.27 feet
Sugar Maple	5"	S.46°W.	11.48 feet
Sugar Maple	6"	N.16°W.	23.40 feet
Steel sign post		S.67°E.	0.90 feet

Dated at Iron River, MI, Wis., this 2nd day of November, 1989

Signature: Gary L. Pisoni Title: Land Surveyor Registration No. S-1634
(County Surveyor, Registered Land Surveyor, or other duly authorized official)

Office of Register of Deeds, County of Forest, I hereby certify that the within instrument was filed in this office for record on the 20th day of September, 1990 at 10:45 o'clock A. M.

(Register of Deeds)
By: Carol Chitko Deputy

44014070020

FORM NO. 985-A

H.C. Miller Company

Stock No. 26273

DOCUMENT NUMBER

140467

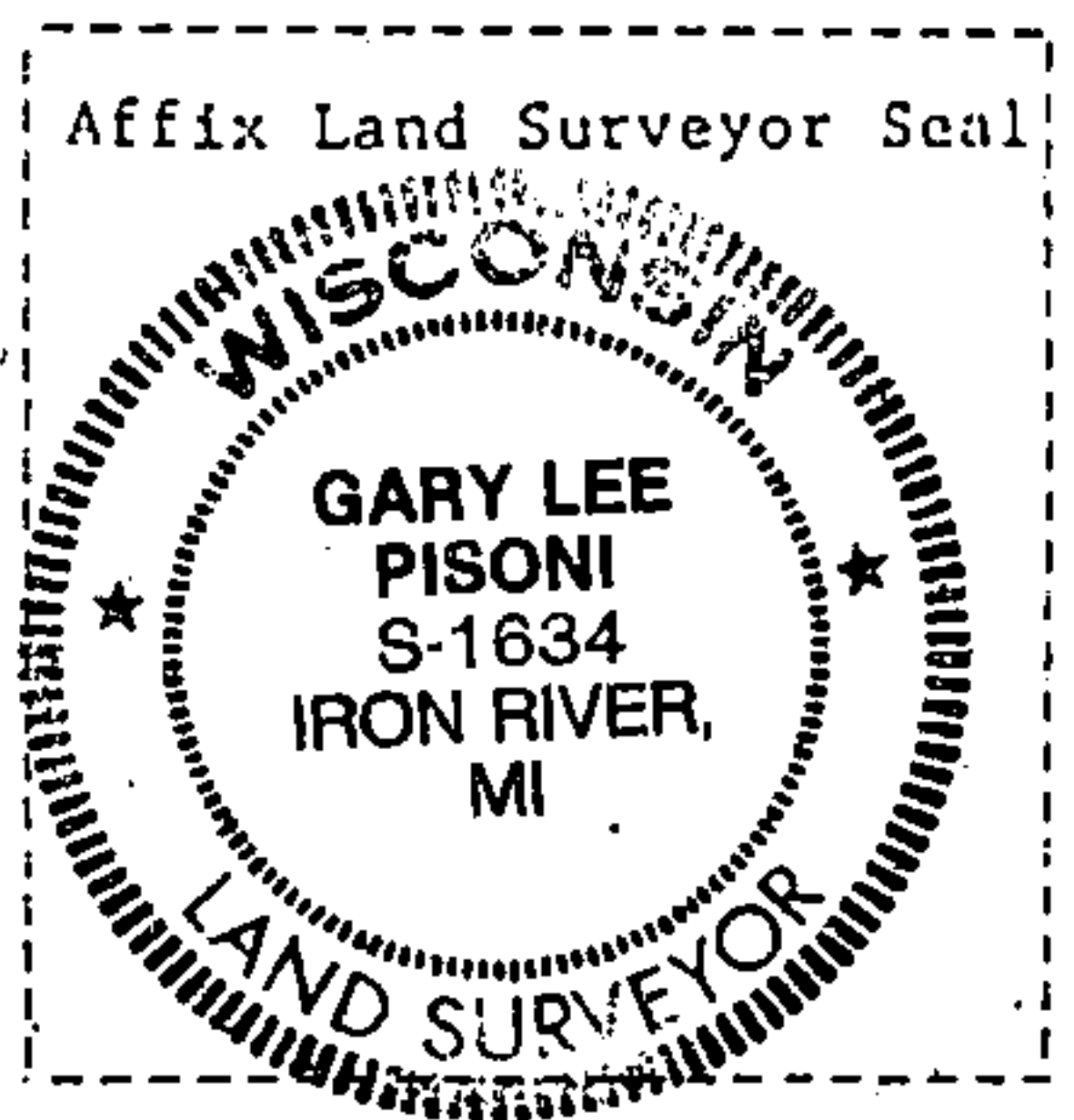
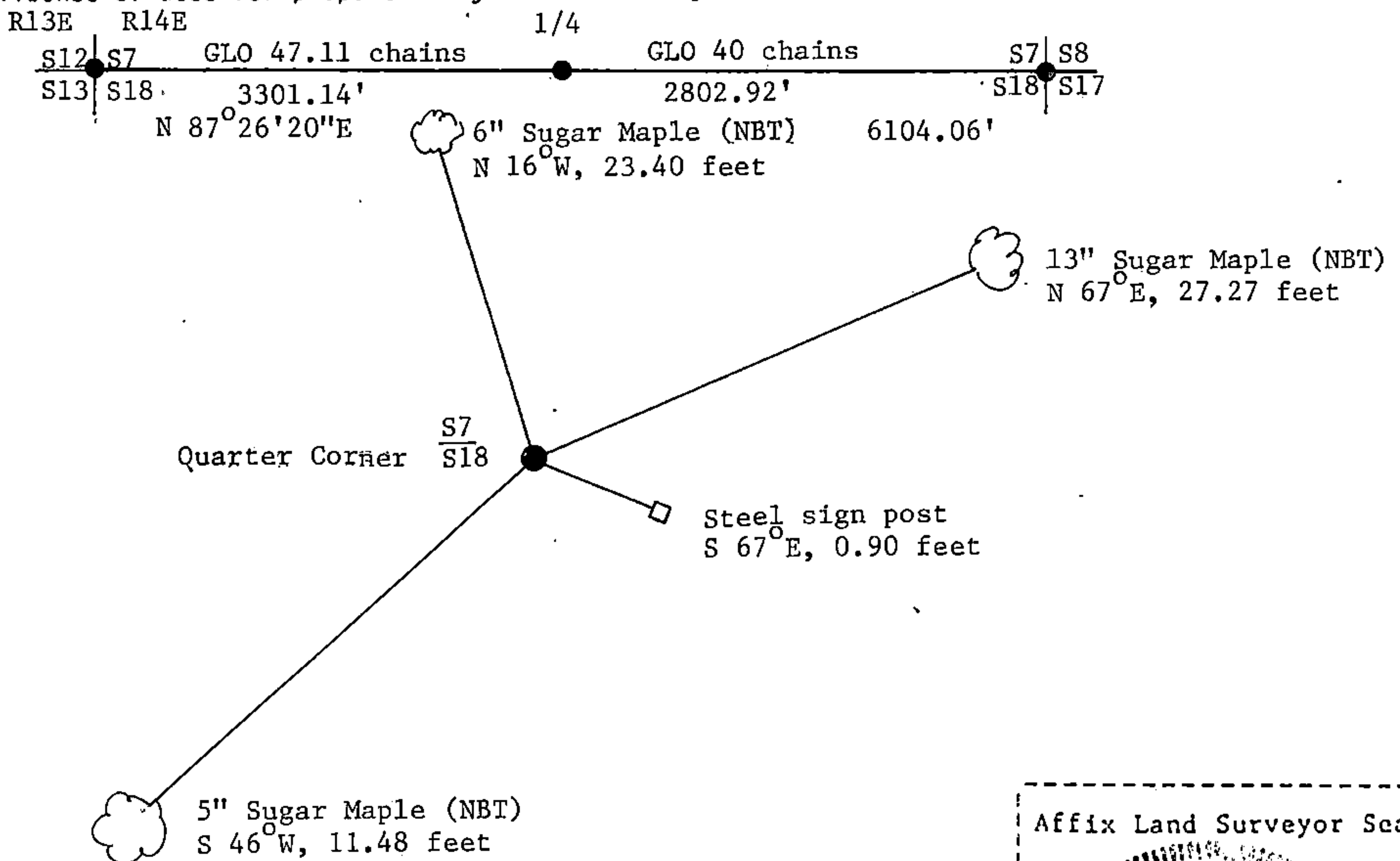
(e) Describe any material discrepancy between the location of the corner as restored or reestablished and the location of that corner as previously restored or reestablished by distance and direction. Show the discrepancy on the plan view drawing under (d), above. Show the distances between the corner as previously restored or reestablished and (1) the corner as restored or reestablished, and (2) to at least 2 of the witness monuments shown on the drawing in (d), above.

See drawing below.

(f) Was the corner restored through acceptance of (1) an obliterated evidence location, or, (2) a found perpetuated location?

Restored through lost corner proportionate methods.

(g&h) Was the corner reestablished through lost corner proportionate methods? If so, show the method, including the directions and distances to other public land survey corners used as evidence or used for proportioning in determining the corner location?



(i) I, Gary L. Pisoni
(type or print name) certify that the corner location shown on this record was determined by me or under my direction and control and that this U.S. Public Land Survey Monument Record is correct and complete to the best of my knowledge and belief.

Signature: Gary L. Pisoni Date: Jan 12 1990

Survey requested by: Edward [Signature] Date: 9-18-90
District Ranger